

阅读申明

- 1.本站收集的数据手册和产品资料都来自互联网，版权归原作者所有。如读者和版权方有任何异议请及时告之，我们将妥善解决。
- 2.本站提供的中文数据手册是英文数据手册的中文翻译，其目的是协助用户阅读，该译文无法自动跟随原稿更新，同时也可能存在翻译上的不当。建议读者以英文原稿为参考以便获得更精准的信息。
- 3.本站提供的产品资料，来自厂商的技术支持或者使用者的心得体会等，其内容可能存在描述上的差异，建议读者做出适当判断。
- 4.如需与我们联系，请发邮件到marketing@iczoom.com，主题请标有“数据手册”字样。

Read Statement

1. The datasheets and other product information on the site are all from network reference or other public materials, and the copyright belongs to the original author and original published source. If readers and copyright owners have any objections, please contact us and we will deal with it in a timely manner.
2. The Chinese datasheets provided on the website is a Chinese translation of the English datasheets. Its purpose is for reader's learning exchange only and do not involve commercial purposes. The translation cannot be automatically updated with the original manuscript, and there may also be improper translations. Readers are advised to use the English manuscript as a reference for more accurate information.
3. All product information provided on the website refer to solutions from manufacturers' technical support or users the contents may have differences in description, and readers are advised to take the original article as the standard.
4. If you have any questions, please contact us at marketing@iczoom.com and mark the subject with "Datasheets" .

Class AB Stereo Headphone Driver

Features

- Operating Voltage
 - Single Supply 3V to 6V
 - Dual Supply $\pm 1.5V$ to $\pm 3.0V$
- High Signal-to-Noise Ratio 100dB
- Low Distortion -65dB
- Large Output Voltage Swing
- Excellent Power Supply Ripple Rejection
- Low Power Consumption
- Short-circuit Elimination
- Wide Temperature Range
- No Switch ON/OFF Clicks
- Available in 8 pin SOP ,DIP or TSSOP Package

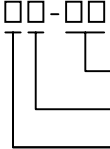

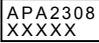
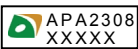
Applications

- Portable Digital Audio

General Description

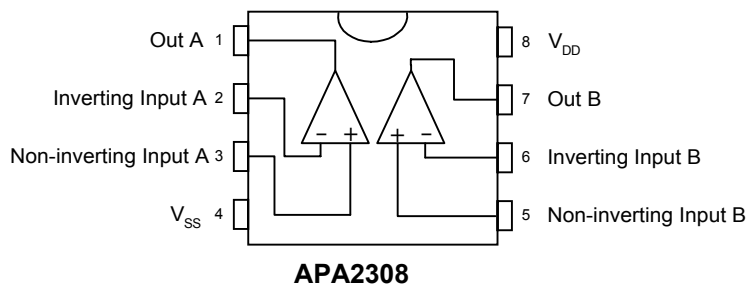
The APA2308 is an integrated class AB stereo headphone driver contained in an SO-8, a DIP-8 or a TSSOP-8 plastic package. The APA2308 is capable of delivering 280mW of max. Output power to an 8 Ω load or 110mW to a 32 Ω load with less than 10% (THD+N) from a 5V power supply. The device is fabricated in a CMOS process and has been primarily developed for portable digital audio applications .

Ordering and Marking Information

APA2308  <ul style="list-style-type: none"> Handling Code Temp. Range Package Code 	Package Code J : PDIP - 8 K : SOP - 8 O : TSSOP - 8 Temp. Range I : - 40 to 85° C Handling Code TU : Tube TR : Tape & Reel
APA2308 J : 	XXXXX - Date Code
APA2308 K : 	XXXXX - Date Code
APA2308 O : 	XXXXX - Date Code

ANPEC reserves the right to make changes to improve reliability or manufacturability without notice, and advise customers to obtain the latest version of relevant information to verify before placing orders.

Block Diagram



Absolute Maximum Ratings

Symbol	Parameter	Rating	Unit
V_{DD}	Supply Voltage	7	V
$T_{SC(O)}$	Output Short-circuit Duration, at $T_A=25^{\circ}C$, $P_{TOT}=1W$	20	S
T_A	Operating Ambient Temperature range	-40 to 85	$^{\circ}C$
T_J	Maximum Junction Temperature	150	$^{\circ}C$
T_{STG}	Storage Temperature Range	-65 to +150	$^{\circ}C$
T_S	Soldering Temperature , 10 seconds	260	$^{\circ}C$
V_{ESD}	Electrostatic Discharge	-3000 to 3000*1	V

Note : *1. Human body model : $C=100pF$, $R=1500\Omega$, 3 positive pulses plus 3 negative pulses

Thermal Characteristics

Symbol	Parameter	Value	Unit	
R_{THJA}	Thermal Resistance from Junction to Ambient in Free Air			
		DIP-8	109	K/W
		SO-8	210	K/W

Electrical Characteristics

$V_{DD}=5V$, $V_{SS}=0V$, $T_A=25^{\circ}C$, $f_i=1kHz$, $R_L=32\Omega$ (unless otherwise noted)

Symbol	Parameter	Test Condition	APA2308			Unit
			Min.	Typ.	Max	
Supply						
V_{DD}	Supply Voltage					V
	Single		3.0	5.0	6.0	
	Dual		± 1.5	± 2.5	± 3.0	
V_{SS}	Negative Supply Voltage		-1.5	-2.5	-3.0	V
I_{DD}	Supply Current	No Load		2.5	5	MA
P_{TOT}	Total Power Dissipation	No Load		12.5	25	mW

Electrical Characteristics Cont.

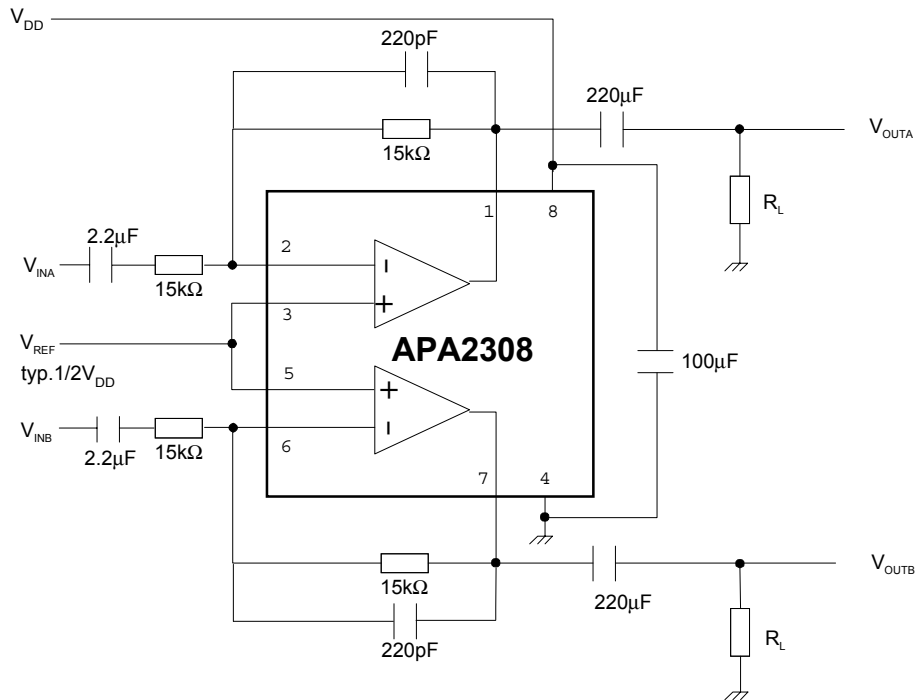
$V_{DD}=5V$, $V_{SS}=0V$, $T_A=25^{\circ}C$, $f_i=1kHz$, $R_L=32\Omega$ (unless otherwise noted)

Symbol	Parameter	Test Condition	APA2308			Unit
			Min.	Typ.	Max	
DC Characteristics						
$V_{I(OS)}$	Input Offset Voltage			5		MV
I_{BIAS}	Input Bias Current			10		PA
V_{CM}	Common Mode Voltage		0		3.5	V
G_V	Open-loop Voltage Gain	$R_L=5k\Omega$		75		dB
I_O	Max. Output Current	$(THD+N)/S < 0.1\%$		140		MA
R_O	Output Resistance			0.25		Ω
AC Characteristics						
V_O	Output Voltage Swing	$R_L=32\Omega^{*1}$	0.25		4.75	V
		$R_L=16\Omega^{*1}$	0.5		4.5	
PSRR	Power Supply Rejection Ratio	$F_i=100Hz$ $V_{RIPPLE(P-P)}=100mV$		65		dB
α_{CS}	Channel Separation	$R_L=32\Omega$		95		dB
C_L	Load Capacitance				200	pF
(THD+N)/S	Total Harmonic Distortion Plus Noise to Signal Ratio	$R_L=32\Omega^{*2}$		-65	-60	dB
				0.05	0.1	%
S/N	Signal to Noise Ratio		90	100		dB
F_G	Unity Gain Frequency	$R_L=5k\Omega$		5		MHz
P_O	Max. Output Power	$(THD+N)/S < 0.1\%$		84		mW
C_I	Input Capacitance			3		pF
B	Power Bandwidth	Unity Gain Inverting		20		kHz

Notes *1 : Values are proportional to V_{DD} ; $(THD+N)/S < 0.1\%$

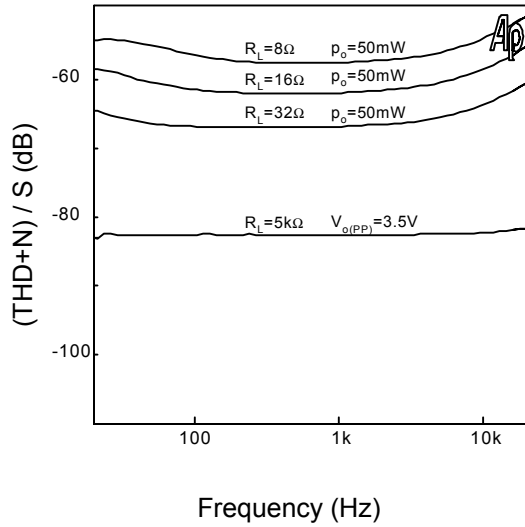
*2 : $V_{DD}=5.0V$; $V_{O(P-P)}=3.5V$ (at 0 dB)

Test And Application Circuits

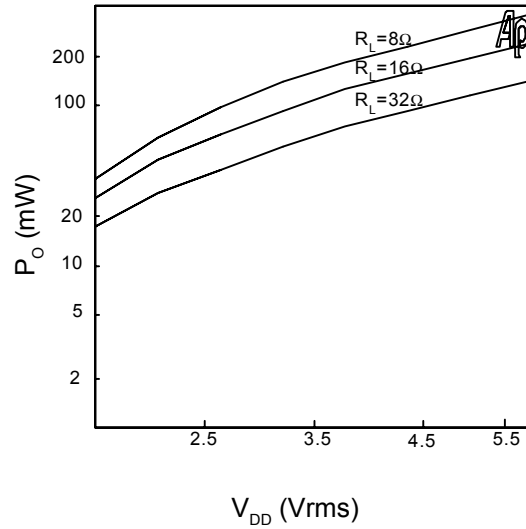


Typical Characteristics

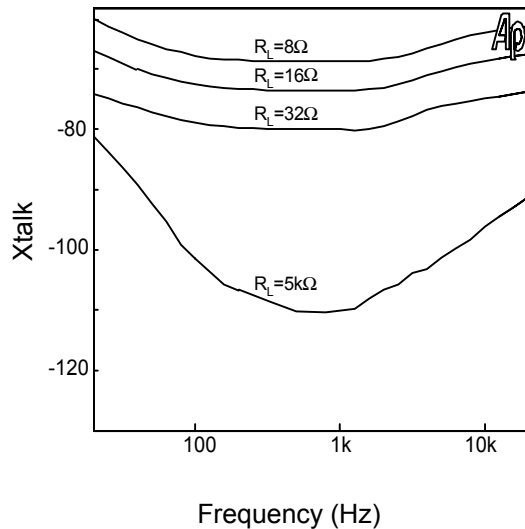
Total Harmonic Distortion Plus Noise-to-Signal Ratio as a Function of Input Frequency



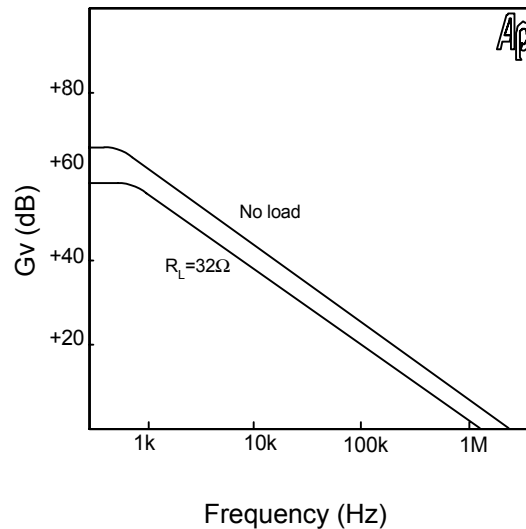
Output Power as a Function of Supply Voltage



Crosstalk as a Function of Input Frequency

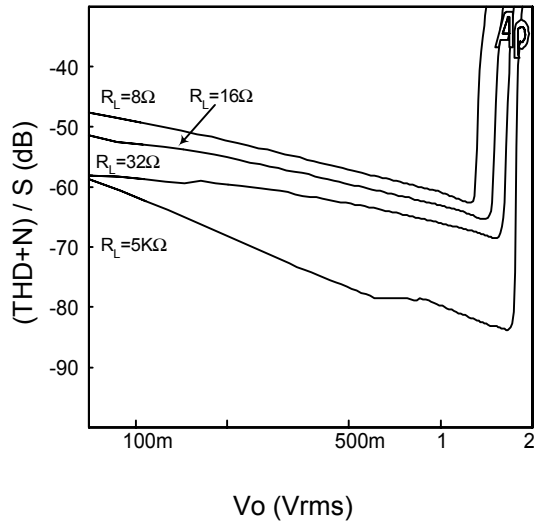


Open Loop Gain as a Function of Input Frequency



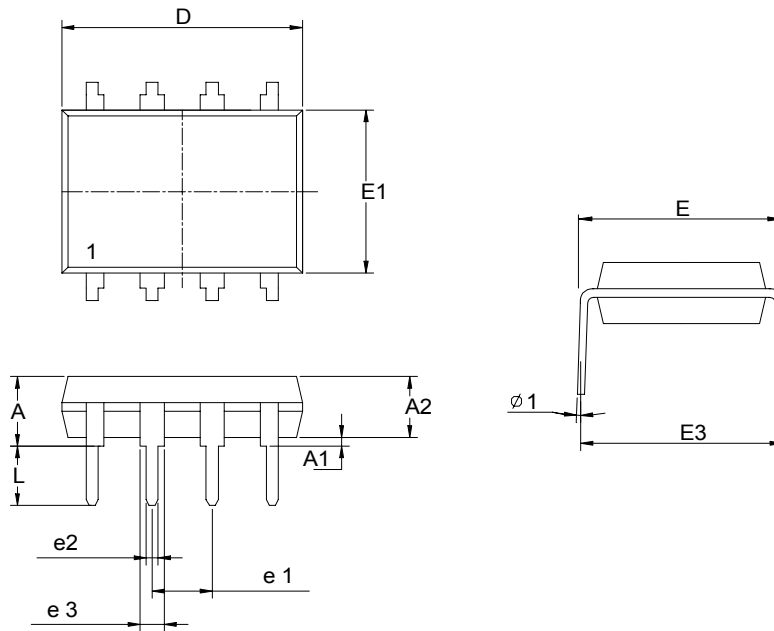
Typical Characteristics Cont.

Total Harmonic Distortion Plus Noise-to-Signal Ratio as a Function of output Voltage



Packaging Information

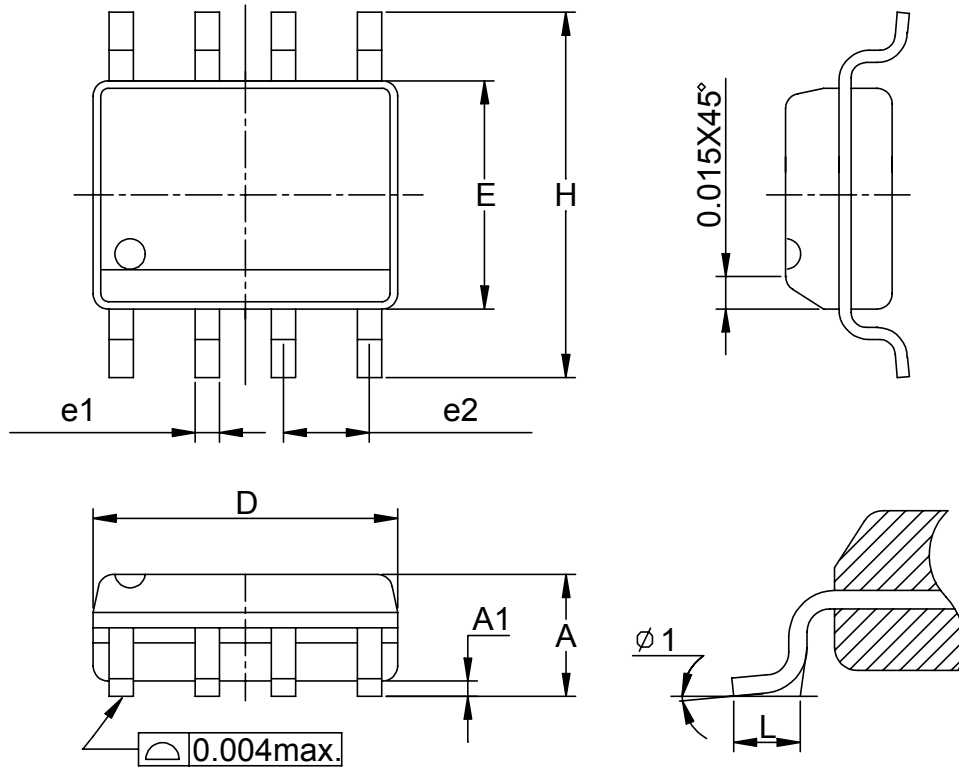
PDIP-8 pin (Reference JEDEC Registration MS-001)



Dim	Millimeters		Inches	
	Min.	Max.	Min.	Max.
A		5.33		0.210
A1	0.38		0.015	
A2	2.92	3.68	0.115	0.145
D	9.02	10.16	0.355	0.400
e1	2.54BSC		0.100BSC	
e2	0.36	0.56	0.014	0.022
e3	1.14	1.78	0.045	0.070
E	7.62 BSC		0.300 BSC	
E1	6.10	7.11	0.240	0.280
E3		10.92		0.430
L	2.92	3.81	0.115	0.150
φ 1	15°		15°	

Packaging Information

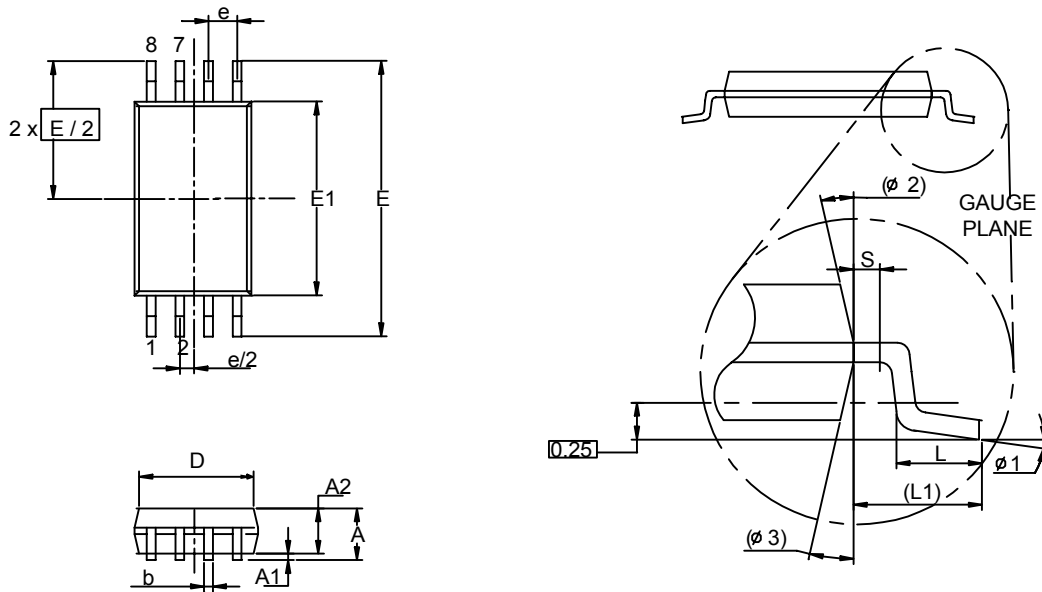
SOP-8 pin (Reference JEDEC Registration MS-012)



Dim	Millimeters		Inches	
	Min.	Max.	Min.	Max.
A	1.35	1.75	0.053	0.069
A1	0.10	0.25	0.004	0.010
D	4.80	5.00	0.189	0.197
E	3.80	4.00	0.150	0.157
H	5.80	6.20	0.228	0.244
L	0.40	1.27	0.016	0.050
e1	0.33	0.51	0.013	0.020
e2	1.27BSC		0.50BSC	
φ 1	8°		8°	

Packaging Information

TSSOP-8



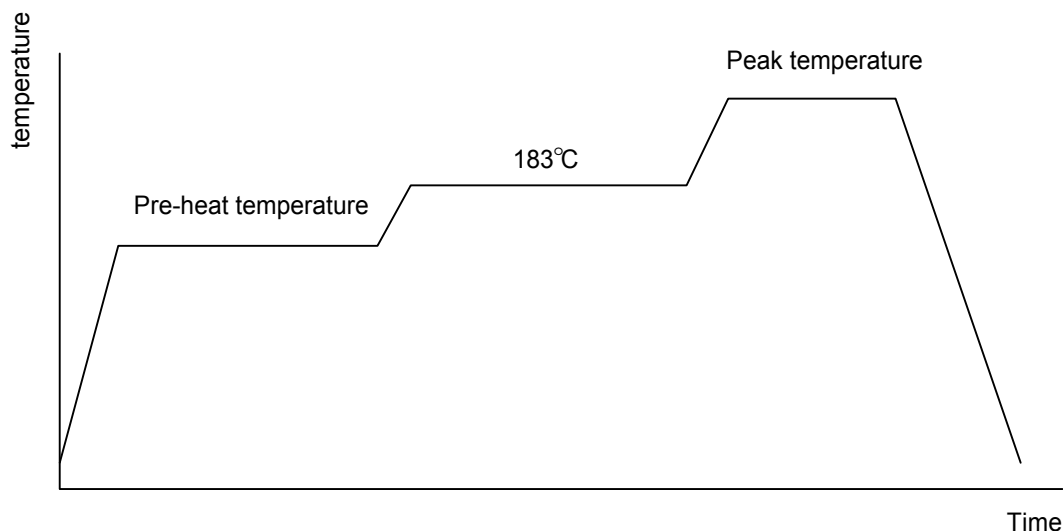
Dim	Millimeters		Inches	
	Min.	Max.	Min.	Max.
A		1.2		0.047
A1	0.00	0.15	0.000	0.006
A2	0.80	1.05	0.031	0.041
b	0.19	0.30	0.007	0.012
D	2.9	3.1	0.114	0.122
e	0.65 BSC		0.026 BSC	
E	6.40 BSC		0.252 BSC	
E1	4.30	4.50	0.169	0.177
L	0.45	0.75	0.018	0.030
L1	1.0 REF		0.039 REF	
R	0.09		0.004	
R1	0.09		0.004	
S	0.2		0.008	
φ1	0°	8°	0°	8°
φ2	12° REF		12° REF	
φ3	12° REF		12° REF	

Physical Specifications

Terminal Material	Solder-Plated Copper (Solder Material : 90/10 or 63/37 SnPb)
Lead Solderability	Meets EIA Specification RSI86-91, ANSI/J-STD-002 Category 3.

Reflow Condition (IR/Convection or VPR Reflow)

Reference JEDEC Standard J-STD-020A APRIL 1999



Classification Reflow Profiles

	Convection or IR/ Convection	VPR
Average ramp-up rate(183°C to Peak)	3°C/second max.	10 °C /second max.
Preheat temperature 125 ± 25°C)	120 seconds max	
Temperature maintained above 183°C	60 – 150 seconds	
Time within 5°C of actual peak temperature	10 –20 seconds	60 seconds
Peak temperature range	220 +5/-0°C or 235 +5/-0°C	215-219°C or 235 +5/-0°C
Ramp-down rate	6 °C /second max.	10 °C /second max.
Time 25°C to peak temperature	6 minutes max.	

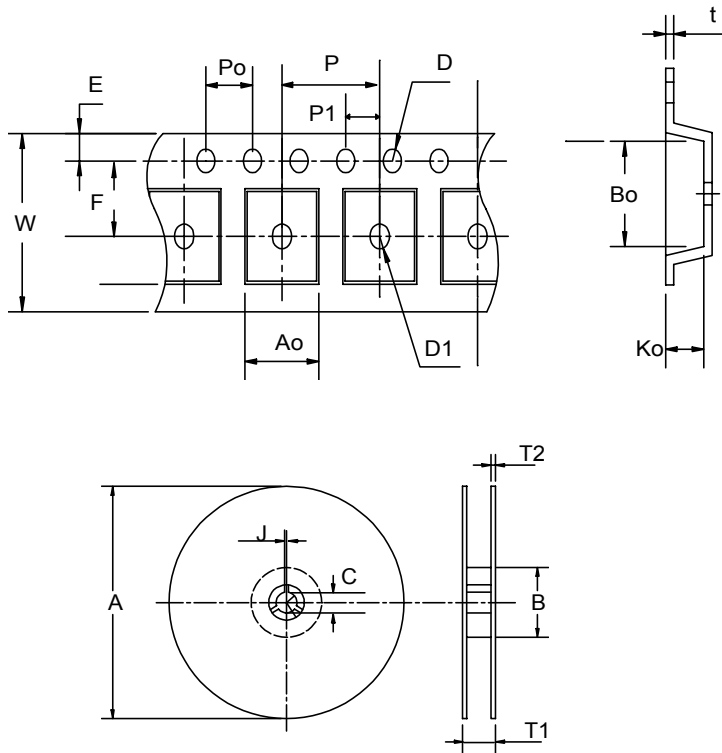
Package Reflow Conditions

pkg. thickness ≥ 2.5mm and all bgas	pkg. thickness < 2.5mm and pkg. volume ≥ 350 mm ³	pkg. thickness < 2.5mm and pkg. volume < 350mm ³
Convection 220 +5/-0 °C		Convection 235 +5/-0 °C
VPR 215-219 °C		VPR 235 +5/-0 °C
IR/Convection 220 +5/-0 °C		IR/Convection 235 +5/-0 °C

Reliability test Program

Test item	Method	Description
SOLDERABILITY	MIL-STD-883D-2003	245° C , 5 SEC
HOLT	MIL-STD-883D-1005.7	1000 Hrs Bias @ 125 °C
PCT	JESD-22-B, A102	168 Hrs, 100 % RH , 121 °C
TST	MIL-STD-883D-1011.9	-65° C ~ 150° C , 200 Cycles
ESD	MIL-STD-883D-3015.7	VHBM > 2KV, VMM > 200V
Latch-Up	JESD 78	10ms , I _{tr} > 100mA

Carrier Tape & Reel Dimensions



Application	A	B	C	J	T1	T2	W	P	E
SOP-8	330 ± 1	62 +1.5	12.75+ 0.15	2 ± 0.5	12.4 ± 0.2	2 ± 0.2	12± 0.3	8± 0.1	1.75±0.1
	F	D	D1	Po	P1	Ao	Bo	Ko	t
	5.5± 1	1.55 +0.1	1.55+ 0.25	4.0 ± 0.1	2.0 ± 0.1	6.4 ± 0.1	5.2± 0.1	2.1± 0.1	0.3±0.013
Application	A	B	C	J	T1	T2	W	P	E
TSSOP-8	330 ± 1	62 +1.5	12.75+ 0.15	2 + 0.5	12.4 ± 0.2	2 ± 0.2	12± 0.3	8± 0.1	1.75±0.1
	F	D	D1	Po	P1	Ao	Bo	Ko	t
	5.5 ± 0.1	1.5 + 0.1	1.5 + 0.1	4.0 ± 0.1	2.0 ± 0.1	7.0 ± 0.1	3.6 ± 0.3	1.6 ± 0.1	0.3±0.013

(mm)

Cover Tape Dimensions

Application	Carrier Width	Cover Tape Width	Devices Per Reel
SOP- 8	12	9.3	2500
TSSOP- 8	12	9.3	2500

Customer Service

Anpec Electronics Corp.

Head Office :

5F, No. 2 Li-Hsin Road, SBIP,

Hsin-Chu, Taiwan, R.O.C.

Tel : 886-3-5642000

Fax : 886-3-5642050

Taipei Branch :

7F, No. 137, Lane 235, Pac Chiao Rd.,

Hsin Tien City, Taipei Hsien, Taiwan, R. O. C.

Tel : 886-2-89191368

Fax : 886-2-89191369