

阅读申明

- 1.本站收集的数据手册和产品资料都来自互联网，版权归原作者所有。如读者和版权方有任何异议请及时告之，我们将妥善解决。
- 2.本站提供的中文数据手册是英文数据手册的中文翻译，其目的是协助用户阅读，该译文无法自动跟随原稿更新，同时也可能存在翻译上的不当。建议读者以英文原稿为参考以便获得更精准的信息。
- 3.本站提供的产品资料，来自厂商的技术支持或者使用者的心得体会等，其内容可能存在描述上的差异，建议读者做出适当判断。
- 4.如需与我们联系，请发邮件到marketing@iczoom.com，主题请标有“数据手册”字样。

Read Statement

1. The datasheets and other product information on the site are all from network reference or other public materials, and the copyright belongs to the original author and original published source. If readers and copyright owners have any objections, please contact us and we will deal with it in a timely manner.
2. The Chinese datasheets provided on the website is a Chinese translation of the English datasheets. Its purpose is for reader's learning exchange only and do not involve commercial purposes. The translation cannot be automatically updated with the original manuscript, and there may also be improper translations. Readers are advised to use the English manuscript as a reference for more accurate information.
3. All product information provided on the website refer to solutions from manufacturers' technical support or users the contents may have differences in description, and readers are advised to take the original article as the standard.
4. If you have any questions, please contact us at marketing@iczoom.com and mark the subject with "Datasheets" .

"High Frequency Ceramic Solutions"

2.4 GHz WLAN, Home RF, Bluetooth, 802.11 b/g, Antenna P/N 2450AT43B100 With Ground Clearance Requirements Minimized

Detail Specification: 7/20/2016

Page 1 of 5

Tip: This antenna "loves" to be mounted on PCB corners for optimum performance

General Specifications

Part Number	2450AT43B100	Input Power	2W max. (CW)
Frequency Range	2400 - 2500 Mhz	Reel Quantity	1,000
Peak Gain	1.3 dBi typ. (XZ-V)	Operating Temperature	-40 to +85°C ¹
Average Gain	-0.5 dBi typ. (XZ-V)	Recommended Storage Conditions (for unused product on T&R)	+5 to +35°C, Humidity: 45-75%RH, 18 mos. Max
Return Loss	9.5 dB min.		
Radiation Pattern	Omnidirectional		

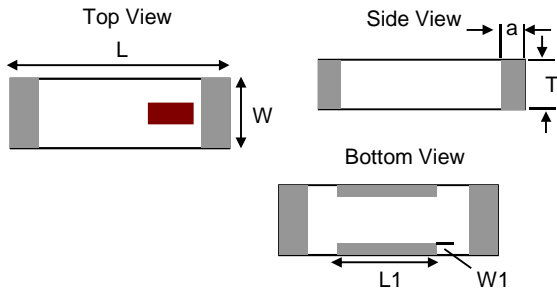
¹Do you need an antenna that can operate at a higher temp or be AEC-Q200? Contact us at: <http://www.johansontechnology.com/ask-a-question>

Part Number Explanation

P/N Suffix	Packaging Style	Bulk	Suffix = S	Eg. 2450AT43B100S
		T & R	Suffix = E	Eg. 2450AT43B100E
	Termination Style	100% Tin	Suffix = None	Eg. 2450AT43B100(E or S)
	Evaluation Board	2450AT43B100-EB1SMA (comes pre-tuned with SMA connector)		

Mechanical Dimensions

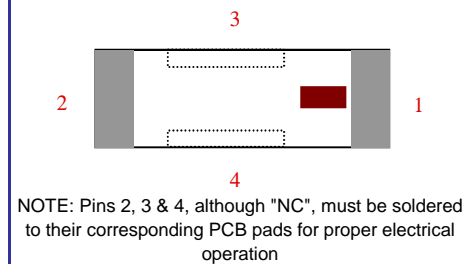
	In	mm
L	0.276 ± 0.008	7.00 ± 0.20
W	0.079 ± 0.008	2.00 ± 0.20
L1	0.102 ± 0.008	2.60 ± 0.20
W1	0.020 ± 0.008	0.50 ± 0.20
T	0.079 +.004/-0.008	2.00 +0.1/-0.2
a	0.020 ± 0.012	0.50 ± 0.30



Want the layout file? Request it at:
www.johansontechnology.com/ask-a-question

Terminal Configuration

No.	Function
1	Feed Point
2	NC
3	NC
4	NC



Johanson Technology, Inc. reserves the right to make design changes without notice.
All sales are subject to Johanson Technology, Inc. terms and conditions.



www.johansontechnology.com
4001 Calle Tecate • Camarillo, CA 93012 • TEL 805.389.1166 FAX 805.389.1821
Ver 2.0 2016 Johanson Technology, Inc. All Rights Reserved

"High Frequency Ceramic Solutions"

2.4 GHz WLAN, Home RF, Bluetooth, 802.11 b/g, Antenna

P/N 2450AT43B100

With Ground Clearance Requirements Minimized

Page 2 of 5

Detail Specification: 7/20/2016

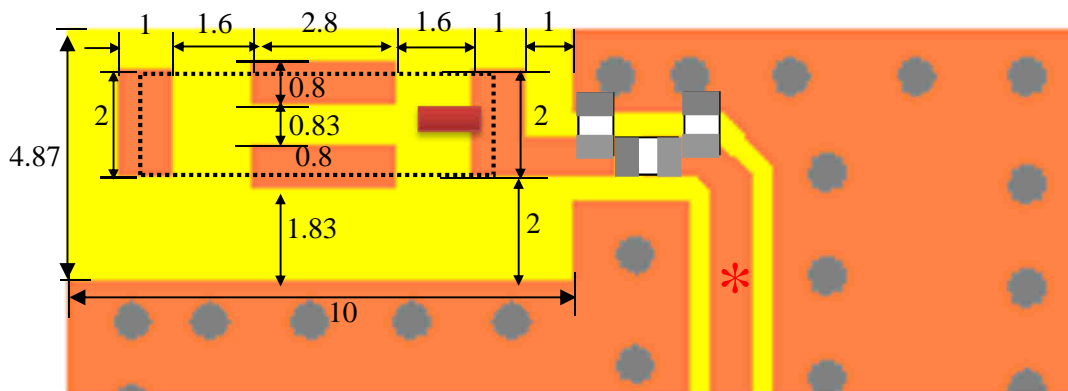
Mounting and Layout Guidelines:

Mount these devices with red mark facing up. Units: mm

Need help designing the antenna in? Use our antenna design services!

www.johansontechnology.com/ipc-antenna-services

We provide 2 Free layout reviews and if you need us to tune and characterize the antenna on your design (anechoic chamber) we can do that too (lab fee may apply for the latter).



IMPORTANT! Matching circuit and component values will be different on your PCB, this will depend on PCB layout and shape, encasement, etc

*Antenna feed line width should be designed to provide 50 Ω impedance otherwise improper operation

Note 1: Pins 2, 3 & 4, although "NC", must be soldered to their corresponding PCB pads for proper operation

Note 2: It is recommended that the designer leave available slots for a "pi" (or shunt-series-shunt) network. The antenna matching network values above are used when antenna is mounted on Johanson's evaluation board. The matching values on client's PCB will be different. Go to: www.johansontechnology.com/tuning and see how to obtain the new values. If you need need us to tune it for you or would like the layout files, please contact our RF Applications Eng Team at: www.johansontechnology.com/ask-a-question

Johanson Technology, Inc. reserves the right to make design changes without notice.
All sales are subject to Johanson Technology, Inc. terms and conditions.



2016 Johanson Technology, Inc. All Rights Reserved

2.0 | 01 Calle Tecate • Camarillo, CA 93012 • TEL 805.389.1166 FAX 805.389.1821

Ver 2.0

2016 Johanson Technology, Inc. All Rights Reserved

"High Frequency Ceramic Solutions"

2.4 GHz WLAN, Home RF, Bluetooth, 802.11 b/g, Antenna

P/N 2450AT43B100

With Ground Clearance Requirements Minimized

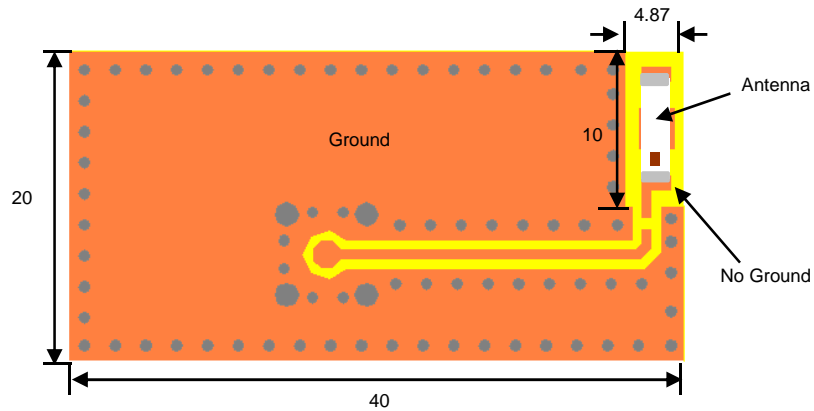
Page 3 of 5

Detail Specification: 7/20/2016

EVB used to characterize the antenna

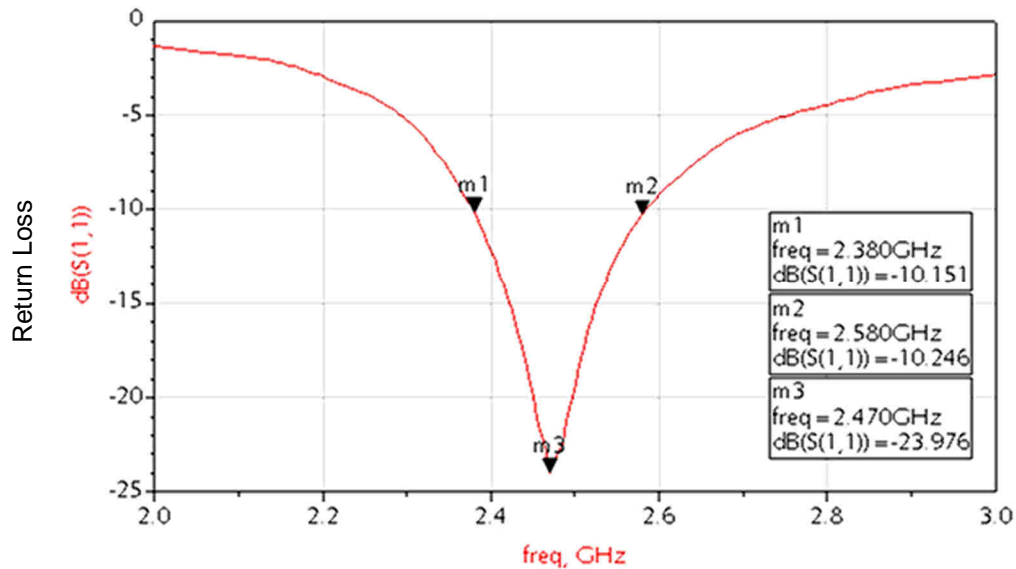
Would you like to order this pre-tuned EVB? Click on:

www.johansontechnology.com/request-a-sample and please reference p/n: 2450AT43B100-EB1SMA
(comes with SMA connector)



Typical Electrical Characteristics (T=25°C)

With Proper Matching Circuit



Johanson Technology, Inc. reserves the right to make design changes without notice.
All sales are subject to Johanson Technology, Inc. terms and conditions.



2016 Johanson Technology, Inc. All Rights Reserved

4001 Calle Tecate • Camarillo, CA 93012 • TEL 805.389.1166 FAX 805.389.1821

Ver 2.0

2016 Johanson Technology, Inc. All Rights Reserved

"High Frequency Ceramic Solutions"

2.4 GHz WLAN, Home RF, Bluetooth, 802.11 b/g, Antenna

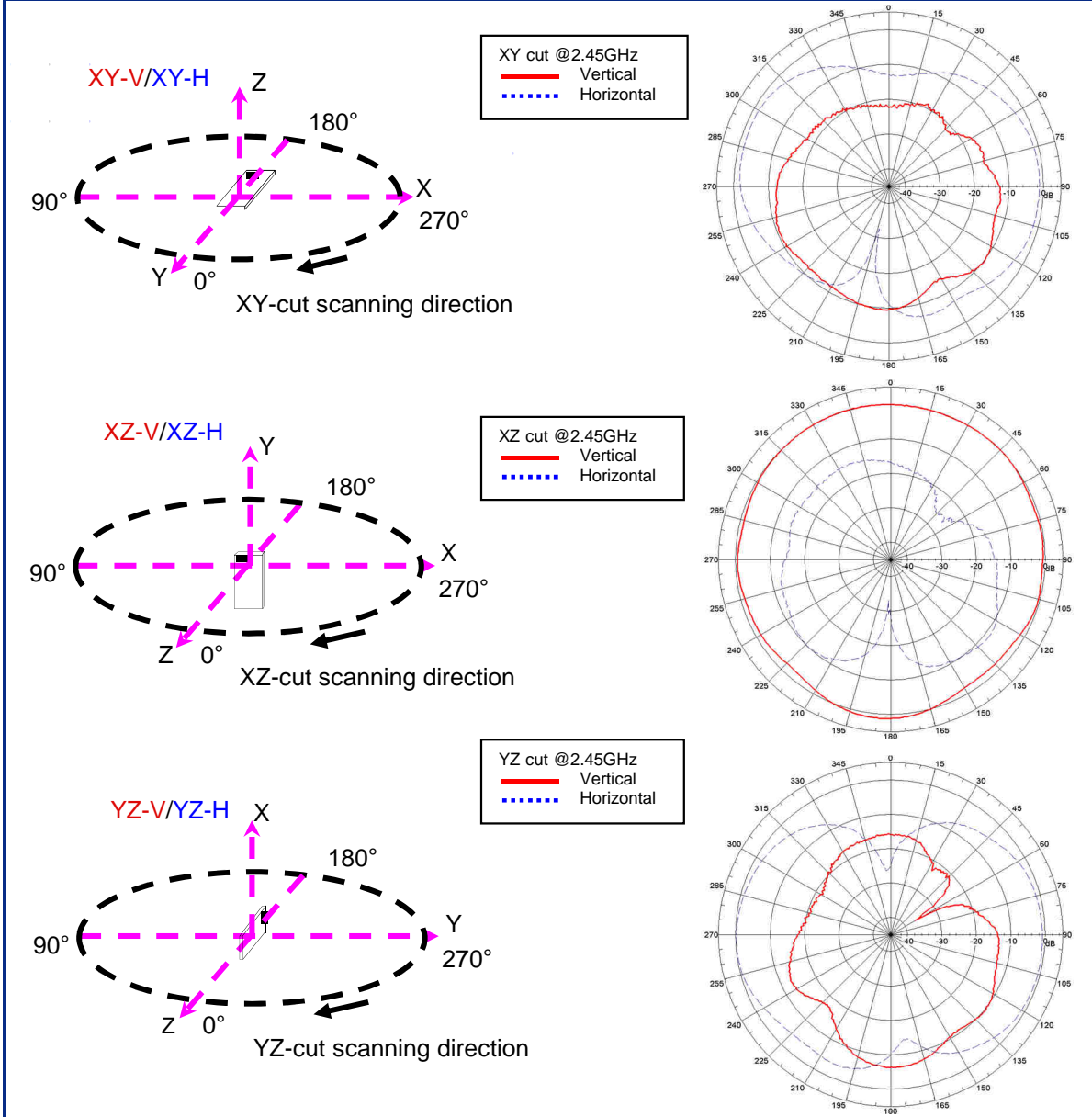
P/N 2450AT43B100

With Ground Clearance Requirements Minimized

Page 4 of 5

Detail Specification: 7/20/2016

Typical Electrical Characteristics/Radiation Patterns (T=25°C)



Johanson Technology, Inc. reserves the right to make design changes without notice.
All sales are subject to Johanson Technology, Inc. terms and conditions.



2016 Johanson Technology, Inc. All Rights Reserved

4001 Calle Tecate • Camarillo, CA 93012 • TEL 805.389.1166 FAX 805.389.1821

Ver 2.0

2016 Johanson Technology, Inc. All Rights Reserved

"High Frequency Ceramic Solutions"

2.4 GHz WLAN, Home RF, Bluetooth, 802.11 b/g, Antenna
With Ground Clearance Requirements Minimized

P/N 2450AT43B100

Detail Specification: 9/8/2016

Page 5 of 5

Antenna layout review, tuning, and characterization services

www.johansontechnology.com/ipc-antenna-services

More SMD Chip Antennas at:

www.johansontechnology.com/antennas

Soldering Information

www.johansontechnology.com/ipcsoldering-profile

Antenna layout and tuning techniques (How to obtain the new antenna matching values)

www.johansontechnology.com/tuning

Packaging information

<http://www.johansontechnology.com/tape-reel-packaging>

RoHS2 (6/6) full compliance

www.johansontechnology.com/rohs-compliance

MSL Info

www.johansontechnology.com/msl-rating

P/N Explanation and Breakdown

www.johansontechnology.com/ipc-pn-explained

Recommended Storage Conditions of
uninstalled product still on T&R

-40 ~ +85 °C, Humidity 45~75%RH, 18 mos. Max

Johanson Technology, Inc. reserves the right to make design changes without notice. Please confirm the specifications and delivery conditions when placing your order. All sales are subject to Johanson Technology, Inc. terms and conditions.

Technical Author: Manuel Carmona



www.johansontechnology.com

4001 Calle Tecate • Camarillo, CA 93012 • TEL 805.389.1166 FAX 805.389.1821

Ver 2.0

2016 Johanson Technology, Inc. All Rights Reserved

Mouser Electronics

Authorized Distributor

Click to View Pricing, Inventory, Delivery & Lifecycle Information:

[Johanson:](#)

[2450AT43B100E](#)