

阅读申明

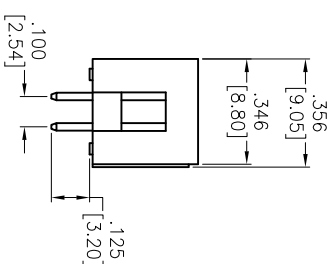
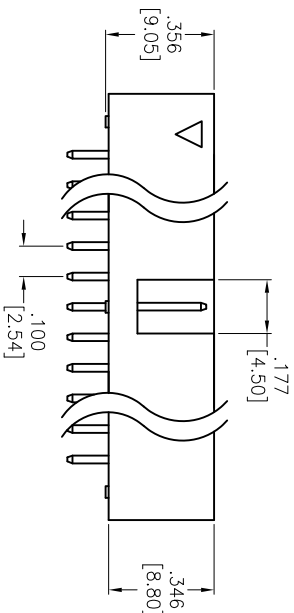
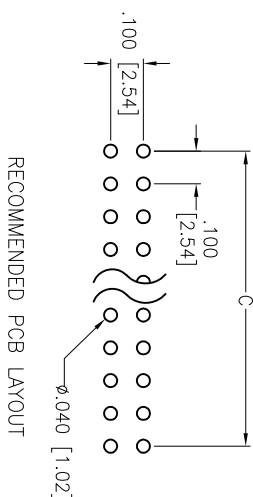
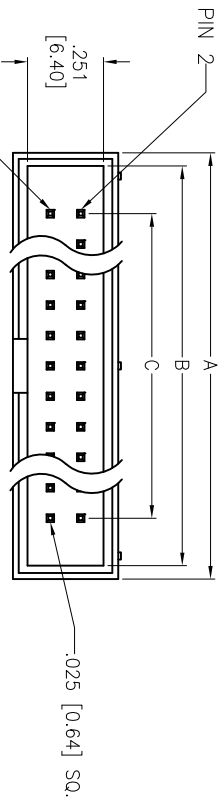
- 1.本站收集的数据手册和产品资料都来自互联网，版权归原作者所有。如读者和版权方有任何异议请及时告之，我们将妥善解决。
- 2.本站提供的中文数据手册是英文数据手册的中文翻译，其目的是协助用户阅读，该译文无法自动跟随原稿更新，同时也可能存在翻译上的不当。建议读者以英文原稿为参考以便获得更精准的信息。
- 3.本站提供的产品资料，来自厂商的技术支持或者使用者的心得体会等，其内容可能存在描述上的差异，建议读者做出适当判断。
- 4.如需与我们联系，请发邮件到marketing@iczoom.com，主题请标有“数据手册”字样。

Read Statement

1. The datasheets and other product information on the site are all from network reference or other public materials, and the copyright belongs to the original author and original published source. If readers and copyright owners have any objections, please contact us and we will deal with it in a timely manner.
2. The Chinese datasheets provided on the website is a Chinese translation of the English datasheets. Its purpose is for reader's learning exchange only and do not involve commercial purposes. The translation cannot be automatically updated with the original manuscript, and there may also be improper translations. Readers are advised to use the English manuscript as a reference for more accurate information.
3. All product information provided on the website refer to solutions from manufacturers' technical support or users the contents may have differences in description, and readers are advised to take the original article as the standard.
4. If you have any questions, please contact us at marketing@iczoom.com and mark the subject with "Datasheets" .

APPROVED: _____
 DATE: _____ TITLE: _____

Rev	AWO #	Description	Date	Appr
-		RELEASED	11/16/04	
A		REDRAW AND REVISED	4/07/06	



SPECIFICATION:
Material:
 Insulator: PBT, glass reinforced, rated UL-94V-0
 Insulator Color: Black
 Contacts: Brass
Contact Plating:
 Gold Flash over Nickel underplate on contact area,
 Tin over Copper underplate on solder tails
Electrical:
 Operating Voltage: 250V AC max.
 Current rating: 3 Amps max.
 Contact resistance: 20 mohms max
 Insulation resistance: 5000 Mohms min
 Dielectric withstanding voltage: 1000 VAC / minute
Mechanical:
 Mating durability: 500 cycles min.
Temperature Rating:
 Operating temperature: -40°C TO +105°C
 Environmental:
 Lead free, RoHS compliant.

A = .100 [2.54] X No. of Positions / 2 + .300 [7.60]
 B = .100 [2.54] X No. of Positions / 2 + .213 [5.40]
 C = .100 [2.54] X No. of Spaces

ADAM TECH

909 Rahway Avenue, Union, NJ 07083
 Phone: 908-687-5000 Fax: 908-687-5710

BOX HEADER, VERTICAL PCB MOUNT,
 2 ROW, .100 PITCH, SELECTIVE GOLD

UNLESS OTHERWISE SPECIFIED
 ALL DIMENSIONS ARE INCHES [MM]
 TOLERANCES: EXCEPT AS NOTED
 INCHES HOLEES

.X	± .10	ØXX	± .10
.XX	± .020	ØXXX	± .015
.XXX	± .015	ØXXXX	± .010

APPROVALS	DATE
DRAWN	SS
CHECKED	
APPROVED	

TITLE		SIZE	PART NO.	REV.
BOX HEADER, VERTICAL PCB MOUNT, 2 ROW, .100 PITCH, SELECTIVE GOLD		X	BHR-XX-V-SGA	A
REF:	S00039T	SCALE:	NTS	SHEET 1 OF 1

