

## 阅读申明

- 1.本站收集的数据手册和产品资料都来自互联网，版权归原作者所有。如读者和版权方有任何异议请及时告之，我们将妥善解决。
- 2.本站提供的中文数据手册是英文数据手册的中文翻译，其目的是协助用户阅读，该译文无法自动跟随原稿更新，同时也可能存在翻译上的不当。建议读者以英文原稿为参考以便获得更精准的信息。
- 3.本站提供的产品资料，来自厂商的技术支持或者使用者的心得体会等，其内容可能存在描述上的差异，建议读者做出适当判断。
- 4.如需与我们联系，请发邮件到marketing@iczoom.com，主题请标有“数据手册”字样。

## Read Statement

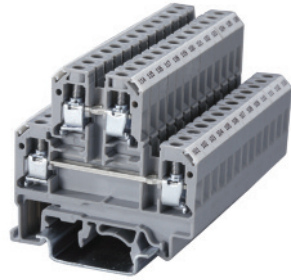
1. The datasheets and other product information on the site are all from network reference or other public materials, and the copyright belongs to the original author and original published source. If readers and copyright owners have any objections, please contact us and we will deal with it in a timely manner.
2. The Chinese datasheets provided on the website is a Chinese translation of the English datasheets. Its purpose is for reader's learning exchange only and do not involve commercial purposes. The translation cannot be automatically updated with the original manuscript, and there may also be improper translations. Readers are advised to use the English manuscript as a reference for more accurate information.
3. All product information provided on the website refer to solutions from manufacturers' technical support or users the contents may have differences in description, and readers are advised to take the original article as the standard.
4. If you have any questions, please contact us at marketing@iczoom.com and mark the subject with "Datasheets" .

Altech double level terminals are the answer to high wiring density problems posed by certain unavoidable wiring arrangements. Double level terminals have the following advantages:

- Double wiring density available without extension of mounting rails.
- Interconnection/shorting can be done at both levels.
- Marking/identification by marking tags possible at both levels.

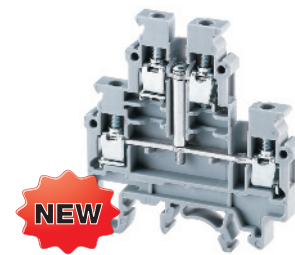
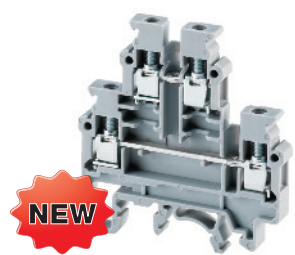
CDL4UN(I.S) internally shorted double level terminals are useful for distribution applications by using shorting links at lower levels.

**Now uses larger MT6 tag for easier visibility.**



## CDL4UN

## CDL4UN(I.S)



Terminal Width	6 mm			6 mm		
Height x Length	54 x 55.5 mm			54 x 55.5 mm		
Stripping Length	9 mm			9 mm		
Insulation Material	Polyamide 6.6			Polyamide 6.6		
Type of Connection	4 screw clamps & 2 tapped holes for cross connection			4 screw clamps & 1 tapped hole for cross connection		
Approvals						
Wire Range	22-10 AWG	0.2-4 sq.mm	22-10 AWG	22-10 AWG	0.2-4 sq.mm	22-10 AWG
Voltage Rating	600V	800 V	600 V	600 V	800 V	600 V
Current Rating	35 A	32 A	35 A	35 A	32 A	35 A
Torque	7 lb-in	0.5 Nm	7 lb-in	7 lb-in	0.5 Nm	7 lb-in

Other Approvals							
-----------------	--	--	--	--	--	--	--

	Cat. No.	Std. Pk.	Cat. No.	Std. Pk.
--	----------	----------	----------	----------

<b>Terminal Block</b>	<b>CDL4UN</b>	100	<b>CDL4UN(I.S)</b>	100
-----------------------	---------------	-----	--------------------	-----

End Plate	EPCDL4UN	50	EPCDL4UN	50
-----------	----------	----	----------	----

Separator Plate	SPCDL4U	100	SPCDL4U	100
-----------------	---------	-----	---------	-----

DIN Rail for ordering information refer to pages 90-91				
-----------------------------------------------------------	--	--	--	--

End Stop for ordering information refer to page 92	CA702	50	CA702	50
	CA802	50	CA802	50

Internal Jumper	2 pole	CA722/2	100	CA722/2	100
	3 pole	CA722/3	50	CA722/3	50
	4 pole	CA722/4	50	CA722/4	50
	10 pole	CA722/10	10	CA722/10	10

Insulated Internal Jumper	2 pole	CA742/2	100	CA742/2	100
	3 pole	CA742/3	50	CA742/3	50
	4 pole	CA742/4	50	CA742/4	50
	10 pole	CA742/10	10	CA742/10	10

Current Bars	2 pole	CA703/1	100	CA703/1	100
	3 pole	CA704/1	100	CA704/1	100
	4 pole	CA705/1	100	CA705/1	100
	10 pole	CA732/10	100	CA732/10	100
	10 pole (breakable)	CA732/10-A	100	CA732/10-A	100
	10 pole	CA732/100	10	CA732/100	10

Shorting Sleeve & Screw	CA707/S/Q/01	100	CA607/S/Q	100
-------------------------	--------------	-----	-----------	-----

External Jumper	2 pole	CA714/2	100	CA714/2	100
	3 pole	CA714/3	100	CA714/3	100
	4 pole	CA714/4	50	CA714/4	50
	10 pole	CA714/10	25	CA714/10	25

Marking Tags	MT6	100	MT6	100
--------------	-----	-----	-----	-----

**COLOR BLOCKS**  
(other than standard grey)

**When ordering please add color suffix to Cat. No.**  
Example for color Red: **Cat.No./R**

<b>Color</b>	<b>Ordering Suffix</b>	
Red	R	
Yellow	Y	
Blue	BU	
Green	G	
Orange	O	
Beige	BG	
Dark Brown	DB	
Black	BL	
White	W	

*Consult Altech for availability:*

# Mouser Electronics

Authorized Distributor

Click to View Pricing, Inventory, Delivery & Lifecycle Information:

[Altech:](#)

[CDL4UN\(I.S\)](#) [EPCDL4UN](#) [CDL4UN](#)