

阅读申明

- 1.本站收集的数据手册和产品资料都来自互联网，版权归原作者所有。如读者和版权方有任何异议请及时告之，我们将妥善解决。
- 2.本站提供的中文数据手册是英文数据手册的中文翻译，其目的是协助用户阅读，该译文无法自动跟随原稿更新，同时也可能存在翻译上的不当。建议读者以英文原稿为参考以便获得更精准的信息。
- 3.本站提供的产品资料，来自厂商的技术支持或者使用者的心得体会等，其内容可能存在描述上的差异，建议读者做出适当判断。
- 4.如需与我们联系，请发邮件到marketing@iczoom.com，主题请标有“数据手册”字样。

Read Statement

1. The datasheets and other product information on the site are all from network reference or other public materials, and the copyright belongs to the original author and original published source. If readers and copyright owners have any objections, please contact us and we will deal with it in a timely manner.
2. The Chinese datasheets provided on the website is a Chinese translation of the English datasheets. Its purpose is for reader's learning exchange only and do not involve commercial purposes. The translation cannot be automatically updated with the original manuscript, and there may also be improper translations. Readers are advised to use the English manuscript as a reference for more accurate information.
3. All product information provided on the website refer to solutions from manufacturers' technical support or users the contents may have differences in description, and readers are advised to take the original article as the standard.
4. If you have any questions, please contact us at marketing@iczoom.com and mark the subject with "Datasheets" .

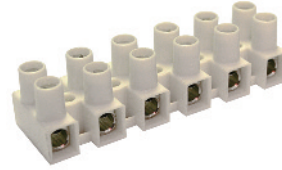
FEED-THROUGH FLAT BASE Panel Mount

For wire-to-wire connections in HVAC, appliance, equipment, power distribution and other industrial applications with strict budget and space requirements. Easy to use double row terminal strips are a cost-effective alternative to barrier strips or other types of terminal blocks. Simply strip the wire, insert and tighten the screw. Eurostrips feature tubular screw terminals with wire protectors, and recessed metal parts for finger protection. The stainless steel wire protectors exhibit excellent memory and the most effective connection.

Eurostrips described on this and the following page are available with a flat base for minimum clearance applications. They can be panel mounted or left to free float. Offered in easy-to-cut standard 12-pole strips, they can also be ordered pre-cut with the required number of poles.

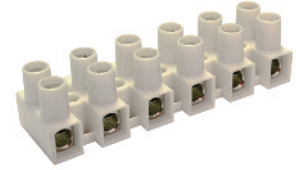
- Tubular screw clamp
- Panel mount or free float
- Housing material:
 - Polyamide 66/6
 - V-O flammability
- Color: opaque white
- Marking plates or factory imprinted application

HE1



Flat base with wire protector

HE4



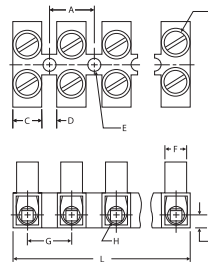
Flat base with wire protector

Pole Spacing	8 mm
Mounting Hole Diameter	3 mm
Stripping Length	5 mm
Approvals	
Wire Range	24-12 AWG
Voltage Rating	300 V
Current Rating	20 A
Torque	4.4 lb-in
Other Approvals	

Pole Spacing	10 mm
Mounting Hole Diameter	3.6 mm
Stripping Length	6 mm
Approvals	
Wire Range	24-10 AWG
Voltage Rating	300 V
Current Rating	30 A
Torque	7.0 lb-in
Other Approvals	

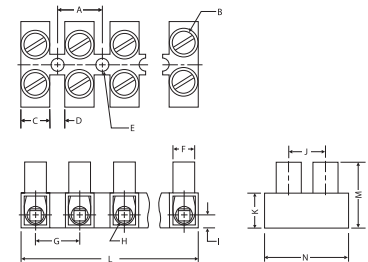
No. of Poles	Cat. No.	Std. Pk.
2	HE1WPR/02	100
3	HE1WPR/03	100
4	HE1WPR/04	100
5	HE1WPR/05	100
6	HE1WPR/06	50
7	HE1WPR/07	50
8	HE1WPR/08	50
9	HE1WPR/09	50
10	HE1WPR/10	50
11	HE1WPR/11	50
12	HE1WPR/12	50

Cat. No.	Std. Pk.
HE4WPR/02	100
HE4WPR/03	100
HE4WPR/04	100
HE4WPR/05	100
HE4WPR/06	50
HE4WPR/07	50
HE4WPR/08	50
HE4WPR/09	50
HE4WPR/10	50
HE4WPR/11	50
HE4WPR/12	50



Dimensions mm

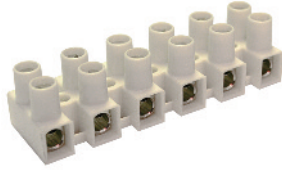
A = 8.0	H = Ø2.8
B = M2.6	I = 2.8
C = 5.2	J = 6.5
D = 2.8	K = 6.5
E = Ø3	L = 94 (12 pole)
F = Ø5	M = 12.2
G = 8.0	N = 16.2



Dimensions mm

A = 10.0	H = Ø3.6
B = M3	I = 3.2
C = 6.4	J = 8.5
D = 3.5	K = 7.9
E = Ø3.6	L = 117 (12 pole)
F = Ø5.7	M = 14.9
G = 10.0	N = 20.0

HE6



Flat base with wire protector

12 mm

4.2 mm

7 mm



20-10 AWG

300 V

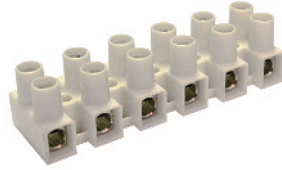
40 A

70 lb-in



Cat. No.	Std. Pk.
HE6WPR/02	100
HE6WPR/03	100
HE6WPR/04	100
HE6WPR/05	100
HE6WPR/06	50
HE6WPR/07	50
HE6WPR/08	50
HE6WPR/09	50
HE6WPR/10	25
HE6WPR/11	25
HE6WPR/12	25

HE10



Flat base with wire protector

15 mm

4.3 / 5.7 mm

8.5 mm



18-8 AWG

300 V

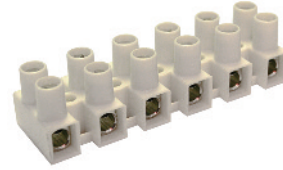
50 A

10.6 lb-in



Cat. No.	Std. Pk.
HE10WPR/02	50
HE10WPR/03	50
HE10WPR/04	50
HE10WPR/05	50
HE10WPR/06	25
HE10WPR/07	25
HE10WPR/08	25
HE10WPR/09	25
HE10WPR/10	10
HE10WPR/11	10
HE10WPR/12	10

HE16



Flat base with wire protector

15 mm

4.3 / 5.7 mm

8.5 mm



18-6 AWG

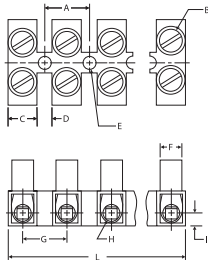
300 V

63 A

177 lb-in

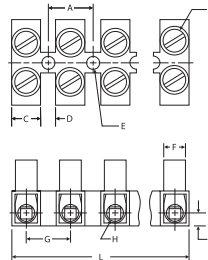


Cat. No.	Std. Pk.
HE16WPR/02	50
HE16WPR/03	50
HE16WPR/04	50
HE16WPR/05	50
HE16WPR/06	25
HE16WPR/07	25
HE16WPR/08	25
HE16WPR/09	25
HE16WPR/10	10
HE16WPR/11	10
HE16WPR/12	10



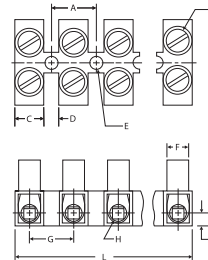
Dimensions mm

A = 12.0	H = Ø4.1
B = M3.5	I = 4.0
C = 7.7	J = 9.5
D = 4.3	K = 8.9
E = Ø4.2	L = 140 (12 pole)
F = Ø6.3	M = 16.8
G = 12.0	N = 22.6



Dimensions mm

A = 15.0	H = Ø5.0
B = M4	I = 4.8
C = 9.3	J = 11.3
D = 5.7	K = 11.6
E = Ø4.3/5.7	L = 175 (12 pole)
F = Ø8.2	M = 21.9
G = 15.0	N = 25.1



Dimensions mm

A = 15.0	H = Ø5.6
B = M5	I = 4.8
C = 9.3	J = 11.3
D = 5.7	K = 11.6
E = Ø4.3/5.7	L = 175 (12 pole)
F = Ø8.2	M = 21.9
G = 15.0	N = 25.1

FEED-THROUGH STANDOFF FEET Panel Mount

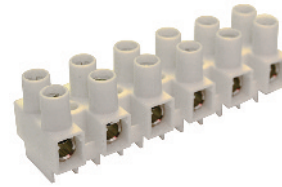
For wire-to-wire connections in HVAC, appliance, equipment, power distribution and other industrial applications with restricted budget and space requirements.

Easy to use feed-through terminal strips are a cost-effective alternative to barrier strips or other types of terminal blocks. Simply strip the wire, insert, and tighten the screw. Eurostrips feature tubular screw clamps, with wire protectors, and recessed metal parts for finger protection. The stainless steel wire protectors exhibit excellent memory and the most effective connection.

Eurostrips described on this and the preceding page are available with standoff feet for increased wiring efficiency. They can be panel mounted or left to free float. Offered in easy-to-cut 12-pole strips, they can also be ordered pre-cut with the required number of poles.

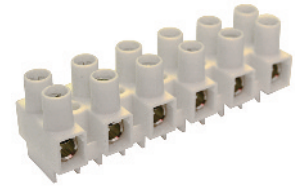
- Tubular screw clamp
- Panel mount or free float
- Housing material:
 - Polyamide 66/6
 - V-O flammability
- Color: opaque white
- Marking plates or factory imprinted

HE1H



Standoff feet with wire protector

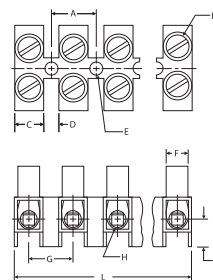
HE4HN



Standoff feet with wire protector

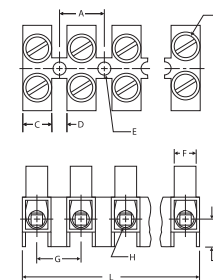
Pole Spacing	8 mm	10 mm
Mounting Hole Diameter	3 mm	3.6 mm
Stripping Length	5 mm	6 mm
Approvals		
Wire Range	24-12 AWG	24-10 AWG
Voltage Rating	600 V	600 V
Current Rating	20 A	30 A
Torque	4.4 lb-in	7.0 lb-in
Other Approvals		

No. of Poles	Cat. No.	Std. Pk.	Cat. No.	Std. Pk.
2	HE1HWPR/02	100	HE4HNWPR/02	100
3	HE1HWPR/03	100	HE4HNWPR/03	100
4	HE1HWPR/04	100	HE4HNWPR/04	100
5	HE1HWPR/05	100	HE4HNWPR/05	100
6	HE1HWPR/06	50	HE4HNWPR/06	50
7	HE1HWPR/07	50	HE4HNWPR/07	50
8	HE1HWPR/08	50	HE4HNWPR/08	50
9	HE1HWPR/09	50	HE4HNWPR/09	50
10	HE1HWPR/10	50	HE4HNWPR/10	50
11	HE1HWPR/11	50	HE4HNWPR/11	50
12	HE1HWPR/12	50	HE4HNWPR/12	50



Dimensions mm

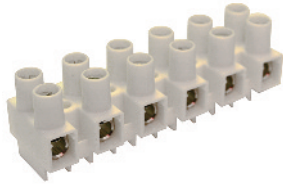
A = 8.0	I = 6.6
B = M2.6	J = 6.5
C = 5.2	K = 10.3
D = 2.8	L = 94 (12 pole)
E = Ø3	M = 16
F = Ø5	N = 16.2
G = 8.0	O = 10.1
H = Ø2.8	



Dimensions mm

A = 10.0	I = 6.7
B = M3	J = 8.5
C = 6.4	K = 12.1
D = 3.5	L = 117 (12 pole)
E = Ø3.6	M = 19.1
F = Ø5.7	N = 20
G = 10.0	O = 14.0
H = Ø3.6	

HE6H

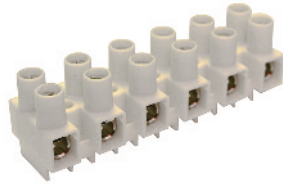


Standoff feet with wire protector

12 mm
4.2 mm
7 mm
20-10 AWG
600 V
40 A
7.0 lb-in

Cat. No.	Std. Pk.
HE6HWPR/02	100
HE6HWPR/03	100
HE6HWPR/04	100
HE6HWPR/05	100
HE6HWPR/06	50
HE6HWPR/07	50
HE6HWPR/08	50
HE6HWPR/09	50
HE6HWPR/10	25
HE6HWPR/11	25
HE6HWPR/12	25

HE10H

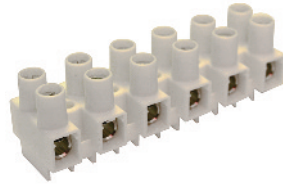


Standoff feet with wire protector

15 mm
4.3/5.7 mm
8.5 mm
18-8 AWG
600 V
50 A
10.6 lb-in

Cat. No.	Std. Pk.
HE10HWPR/02	40
HE10HWPR/03	40
HE10HWPR/04	40
HE10HWPR/05	40
HE10HWPR/06	20
HE10HWPR/07	20
HE10HWPR/08	20
HE10HWPR/09	10
HE10HWPR/10	10
HE10HWPR/11	10
HE10HWPR/12	10

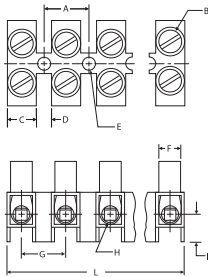
HE16H



Standoff feet with wire protector

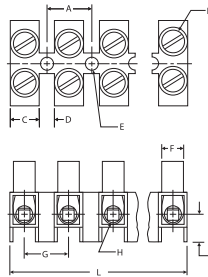
15 mm
4.3/5.7 mm
8.5 mm
18-6 AWG
600 V
63 A
17.7 lb-in

Cat. No.	Std. Pk.
HE16HWPR/02	40
HE16HWPR/03	40
HE16HWPR/04	40
HE16HWPR/05	40
HE16HWPR/06	20
HE16HWPR/07	20
HE16HWPR/08	20
HE16HWPR/09	10
HE16HWPR/10	10
HE16HWPR/11	10
HE16HWPR/12	10



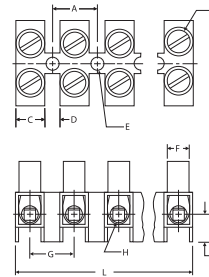
Dimensions mm

A = 12.0	I = 9
B = M3.5	J = 9.6
C = 7.7	K = 13.9
D = 4.3	L = 140 (12 pole)
E = Ø4.2	M = 21.8
F = Ø6.3	N = 22.6
G = 12.0	O = 15
H = Ø4.1	



Dimensions mm

A = 15.0	I = 10.7
B = M4	J = 11.3
C = 9.3	K = 17.5
D = 5.7	L = 175 (12 pole)
E = Ø4.3/5.7	M = 27.8
F = Ø8.2	N = 25.1
G = 15.0	O = 16
H = Ø5.0	



Dimensions mm

A = 15.0	I = 10.7
B = M5	J = 11.3
C = 9.3	K = 17.5
D = 5.7	L = 175 (12 pole)
E = Ø4.3/5.7	M = 27.8
F = Ø8.2	N = 25.1
G = 15.0	O = 16
H = Ø5.6	

PLUGGABLE Panel Mount

For wire-to-wire connections in HVAC, appliance, equipment, power and other distribution applications. Pluggable Eurostrips® speed and simplify replacement of subassemblies, etc. They reduce downtime and misconnections.

Two-piece pluggable terminal strips feature tubular screw clamps, with recessed metal parts for finger protection. A spring loaded contact prevents inadvertent unplugging.

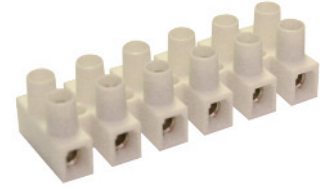
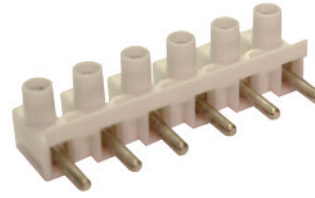
The headers and plugs are available with flat base or standoff feet and can be panel mounted or free float. Offered in easy-to cut 12-pole strips, they can also be ordered precut with the required number of poles.

- Tubular Screw Clamp
- Panel Mount or Free Float
- Housing material:
 - Polyamide 66/6
 - V-O flammability
- Color: Opaque White

FLAT BASE

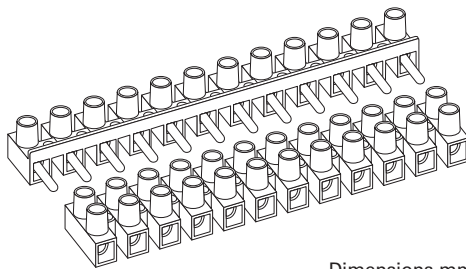
HE42ST

HE42BU



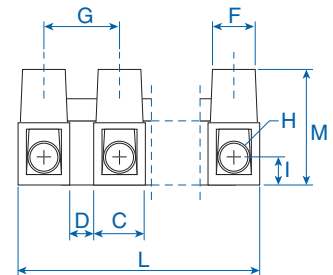
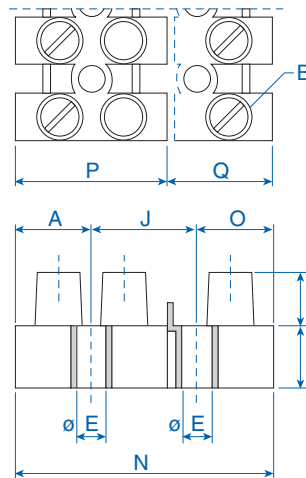
Pole Spacing	10 mm	10 mm
Mounting Hole Diameter	3.5 mm	3.5 mm
Stripping Length	3.6 mm	3.6 mm
Approvals	US E211022	US E211022
Wire Range	24-10AWG	24-10AWG
Voltage Rating	300V	300V
Current Rating	20A	20A
Torque	7.2 lb-in	7.2 lb-in
Other Approvals		

No. of Poles	Cat. No.	Std. Pk.	Cat. No.	Std. Pk.
2	HE42ST/02	100	HE42BU/02	100
3	HE42ST/03	100	HE42BU/03	100
4	HE42ST/04	100	HE42BU/04	100
5	HE42ST/05	100	HE42BU/05	100
6	HE42ST/06	50	HE42BU/06	50
7	HE42ST/07	50	HE42BU/07	50
8	HE42ST/08	50	HE42BU/08	50
9	HE42ST/09	50	HE42BU/09	50
10	HE42ST/10	50	HE42BU/10	50
11	HE42ST/11	50	HE42BU/11	50
12	HE42ST/12	50	HE42BU/12	50



Dimensions mm

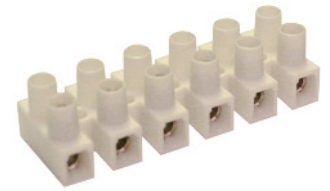
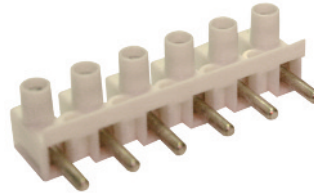
A = 10.0	J = 15.2
B = M3	K = 7.9
C = 6.4	L = 117
D = 3.6	M = 14.9
E = Ø3.5	N = 34.4
F = Ø5.7	O = 9.2
G = 10.0	P = 20
H = Ø3.5	Q = 14.4
I = 3.2	R = 7



HE42SST

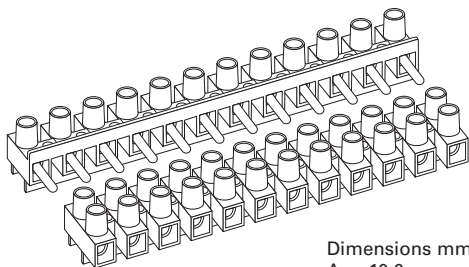
HE42SBU

STANDOFF FEET



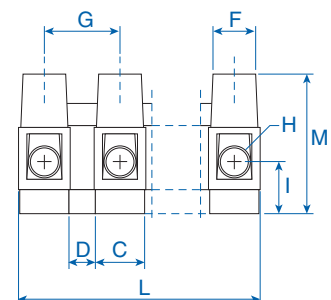
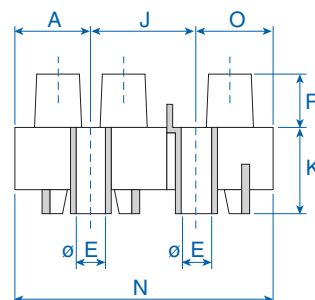
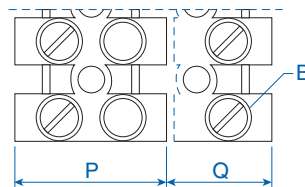
Pole Spacing	10 mm	10 mm
Mounting Hole Diameter	3.5 mm	3.5 mm
Stripping Length	3.6 mm	3.6 mm
Approvals		
Wire Range	24-10AWG	24-10AWG
Voltage Rating	600V	600V
Current Rating	20A	20A
Torque	7.2 lb-in	7.2 lb-in
Other Approvals		

No. of Poles	Cat. No.	Std. Pk.	Cat. No.	Std. Pk.
2	HE42SST/02	100	HE42SBU/02	100
3	HE42SST/03	100	HE42SBU/03	100
4	HE42SST/04	100	HE42SBU/04	100
5	HE42SST/05	100	HE42SBU/05	100
6	HE42SST/06	50	HE42SBU/06	50
7	HE42SST/07	50	HE42SBU/07	50
8	HE42SST/08	50	HE42SBU/08	50
9	HE42SST/09	50	HE42SBU/09	50
10	HE42SST/10	50	HE42SBU/10	50
11	HE42SST/11	50	HE42SBU/11	50
12	HE42SST/12	50	HE42SBU/12	50



Dimensions mm

A = 10.0	J = 15.2
B = M3	K = 11.5
C = 6.4	L = 117
D = 3.6	M = 18.5
E = Ø3.5	N = 34.4
F = Ø5.7	O = 9.2
G = 10.0	P = 20
H = Ø3.5	Q = 14.4
I = 6.8	R = 7



Mouser Electronics

Authorized Distributor

Click to View Pricing, Inventory, Delivery & Lifecycle Information:

Altech:

[HCL8-9](#) [HCL8-6](#) [HE1WPR/05](#) [HCL10-6](#) [HE16WPR/05](#) [HE1HWPR/12](#) [HE1WPR/03](#) [HE1WPR/04](#) [HE1WPR/10](#)
[HE1WPR/12](#) [HE42BU/10](#) [HE4WPR/03](#) [HE4WPR/04](#) [HE4WPR/12](#) [HE4WPR/02](#) [HE4WPR/05](#) [HE4HNWPR/03](#)
[HE4WPR/06](#) [HE1WPR/12/MS](#) [HE1HWPR/02](#) [HE4HNWPR/12](#) [HE10HWPR/12](#) [HE6HWPR/12](#) [HE4WPR/07](#)
[HE4WPR/11](#) [HE4WPR/09](#) [HE4WPR/10](#) [HE4WPR/08](#)