

阅读申明

- 1.本站收集的数据手册和产品资料都来自互联网，版权归原作者所有。如读者和版权方有任何异议请及时告之，我们将妥善解决。
- 2.本站提供的中文数据手册是英文数据手册的中文翻译，其目的是协助用户阅读，该译文无法自动跟随原稿更新，同时也可能存在翻译上的不当。建议读者以英文原稿为参考以便获得更精准的信息。
- 3.本站提供的产品资料，来自厂商的技术支持或者使用者的心得体会等，其内容可能存在描述上的差异，建议读者做出适当判断。
- 4.如需与我们联系，请发邮件到marketing@iczoom.com，主题请标有“数据手册”字样。

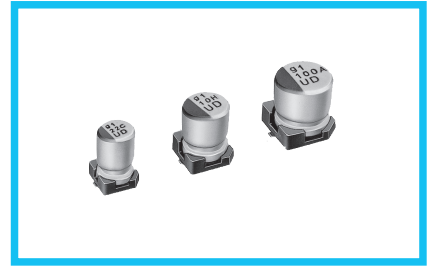
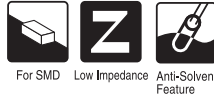
Read Statement

1. The datasheets and other product information on the site are all from network reference or other public materials, and the copyright belongs to the original author and original published source. If readers and copyright owners have any objections, please contact us and we will deal with it in a timely manner.
2. The Chinese datasheets provided on the website is a Chinese translation of the English datasheets. Its purpose is for reader's learning exchange only and do not involve commercial purposes. The translation cannot be automatically updated with the original manuscript, and there may also be improper translations. Readers are advised to use the English manuscript as a reference for more accurate information.
3. All product information provided on the website refer to solutions from manufacturers' technical support or users the contents may have differences in description, and readers are advised to take the original article as the standard.
4. If you have any questions, please contact us at marketing@iczoom.com and mark the subject with "Datasheets" .

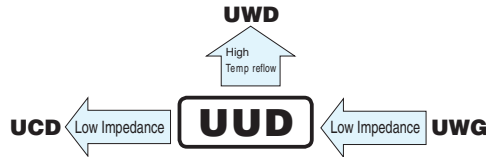
ALUMINUM ELECTROLYTIC CAPACITORS

UUD

Chip Type, Low Impedance



- Chip type, low impedance temperature range up to +105°C.
- Designed for surface mounting on high density PC board.
- Applicable to automatic mounting machine fed with carrier tape.
- Compliant to the RoHS directive (2011/65/EU).

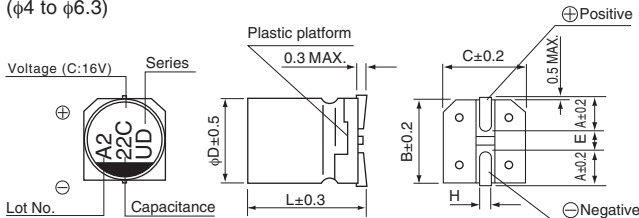


Specifications

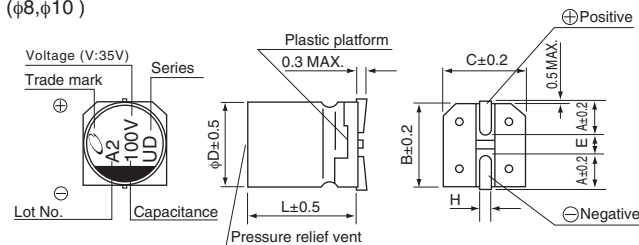
| Item | Performance Characteristics | | | | | | | | | | | | | |
|-------------------------------|---|--|----|----|----|----|----|--|--------------------|--|-------|---|-----------------|---|
| Category Temperature Range | -55 to +105°C | | | | | | | | | | | | | |
| Rated Voltage Range | 6.3 to 50V | | | | | | | | | | | | | |
| Rated Capacitance Range | 1 to 1500μF | | | | | | | | | | | | | |
| Capacitance Tolerance | ±20% at 120Hz, 20°C | | | | | | | | | | | | | |
| Leakage Current | After 2 minutes' application of rated voltage, leakage current is not more than 0.01 CV or 3 (μA), whichever is greater. | | | | | | | | | | | | | |
| Tangent of loss angle (tan δ) | Measurement frequency : 120Hz at 20°C | | | | | | | () is φ8 over | | | | | | |
| | Rated voltage (V) | 6.3 | 10 | 16 | 25 | 35 | 50 | | | | | | | |
| Stability at Low Temperature | Measurement frequency : 120Hz | | | | | | | | | | | | | |
| | Impedance ratio | Z-25°C / Z+20°C | 3 | 2 | 2 | 2 | 2 | | 2 | | | | | |
| Endurance | The specifications listed at right shall be met when the capacitors are restored to 20°C after the rated voltage is applied for 5000 hours (2000 hours for φD = 4, 5 and 6.3) at 105°C. | | | | | | | <table border="1"> <tr> <td>Capacitance change</td> <td>Within ±30% of the initial capacitance value</td> </tr> <tr> <td>tan δ</td> <td>200% or less than the initial specified value</td> </tr> <tr> <td>Leakage current</td> <td>Less than or equal to the initial specified value</td> </tr> </table> | Capacitance change | Within ±30% of the initial capacitance value | tan δ | 200% or less than the initial specified value | Leakage current | Less than or equal to the initial specified value |
| | Capacitance change | Within ±30% of the initial capacitance value | | | | | | | | | | | | |
| tan δ | 200% or less than the initial specified value | | | | | | | | | | | | | |
| Leakage current | Less than or equal to the initial specified value | | | | | | | | | | | | | |
| Shelf Life | After storing the capacitors under no load at 105°C for 1000 hours and then performing voltage treatment based on JIS C 5101-4 clause 4.1 at 20°C, they shall meet the specified values for the endurance characteristics listed above. | | | | | | | <table border="1"> <tr> <td>Capacitance change</td> <td>Within ±10% of the initial capacitance value</td> </tr> <tr> <td>tan δ</td> <td>Less than or equal to the initial specified value</td> </tr> <tr> <td>Leakage current</td> <td>Less than or equal to the initial specified value</td> </tr> </table> | Capacitance change | Within ±10% of the initial capacitance value | tan δ | Less than or equal to the initial specified value | Leakage current | Less than or equal to the initial specified value |
| | Capacitance change | Within ±10% of the initial capacitance value | | | | | | | | | | | | |
| tan δ | Less than or equal to the initial specified value | | | | | | | | | | | | | |
| Leakage current | Less than or equal to the initial specified value | | | | | | | | | | | | | |
| Resistance to soldering heat | The capacitors are kept on a hot plate for 30 seconds, which is maintained at 250°C. The capacitors shall meet the characteristic requirements listed at right when they are removed from the plate and restored to 20°C. | | | | | | | <table border="1"> <tr> <td>Capacitance change</td> <td>Within ±10% of the initial capacitance value</td> </tr> <tr> <td>tan δ</td> <td>Less than or equal to the initial specified value</td> </tr> <tr> <td>Leakage current</td> <td>Less than or equal to the initial specified value</td> </tr> </table> | Capacitance change | Within ±10% of the initial capacitance value | tan δ | Less than or equal to the initial specified value | Leakage current | Less than or equal to the initial specified value |
| | Capacitance change | Within ±10% of the initial capacitance value | | | | | | | | | | | | |
| tan δ | Less than or equal to the initial specified value | | | | | | | | | | | | | |
| Leakage current | Less than or equal to the initial specified value | | | | | | | | | | | | | |
| Marking | Black print on the case top. | | | | | | | | | | | | | |

Chip Type

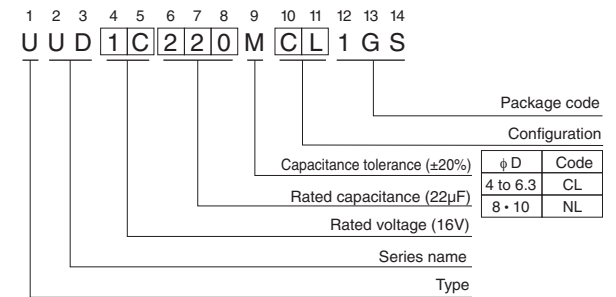
(φ4 to φ6.3)



(φ8, φ10)



Type numbering system (Example : 16V 22μF)



| φ D × L | 4 × 5.8 | 5 × 5.8 | 6.3 × 5.8 | 6.3 × 7.7 | 8 × 10 | 10 × 10 |
|---------|------------|------------|------------|------------|------------|------------|
| A | 1.8 | 2.1 | 2.4 | 2.4 | 2.9 | 3.2 |
| B | 4.3 | 5.3 | 6.6 | 6.6 | 8.3 | 10.3 |
| C | 4.3 | 5.3 | 6.6 | 6.6 | 8.3 | 10.3 |
| E | 1.0 | 1.3 | 2.2 | 2.2 | 3.1 | 4.5 |
| L | 5.8 | 5.8 | 5.8 | 7.7 | 10 | 10 |
| H | 0.5 to 0.8 | 0.5 to 0.8 | 0.5 to 0.8 | 0.5 to 0.8 | 0.8 to 1.1 | 0.8 to 1.1 |

Voltage

| V | 6.3 | 10 | 16 | 25 | 35 | 50 |
|------|-----|----|----|----|----|----|
| Code | j | A | C | E | V | H |

● Dimension table in next page.



■ Dimensions

| Cap. (μ F) | V Code | 6.3 | | | 10 | | | 16 | | | 25 | | | 35 | | | 50 | | | | | |
|--------------------|-----------|-----------|------|-----|-----------|------|-----|-----------|------|---------|-----------|------|---------|-----------|------|---------|-----------|------|-----------|-----------|------|-----|
| | | 0J | | | 1A | | | 1C | | | 1E | | | 1V | | | 1H | | | | | |
| 1 | 010 | | | | | | | | | | | | | | | | 4 × 5.8 | 5.00 | 30 | | | |
| 2.2 | 2R2 | | | | | | | | | | | | | | | | 4 × 5.8 | 5.00 | 30 | | | |
| 3.3 | 3R3 | | | | | | | | | | | | | | | | 4 × 5.8 | 5.00 | 30 | | | |
| 4.7 | 4R7 | | | | | | | | | | | | | 4 × 5.8 | 1.80 | 80 | 5 × 5.8 | 1.52 | 85 | | | |
| 10 | 100 | | | | | | | | | 4 × 5.8 | 1.80 | 80 | 5 × 5.8 | 0.76 | 150 | 5 × 5.8 | 0.76 | 150 | 6.3 × 5.8 | 0.88 | 165 | |
| 15 | 150 | | | | | | | 4 × 5.8 | 1.80 | 80 | 5 × 5.8 | 0.76 | 150 | 5 × 5.8 | 0.76 | 150 | 5 × 5.8 | 0.76 | 150 | 6.3 × 5.8 | 0.88 | 165 |
| 22 | 220 | | | | 4 × 5.8 | 1.80 | 80 | 5 × 5.8 | 0.76 | 150 | 5 × 5.8 | 0.76 | 150 | 5 × 5.8 | 0.76 | 150 | 5 × 5.8 | 0.76 | 150 | 6.3 × 5.8 | 0.88 | 165 |
| 27 | 270 | 4 × 5.8 | 1.80 | 80 | 5 × 5.8 | 0.76 | 150 | 5 × 5.8 | 0.76 | 150 | 6.3 × 5.8 | 0.44 | 230 | 6.3 × 5.8 | 0.44 | 230 | 6.3 × 5.8 | 0.44 | 230 | 6.3 × 7.7 | 0.68 | 185 |
| 33 | 330 | 5 × 5.8 | 0.76 | 150 | 5 × 5.8 | 0.76 | 150 | 6.3 × 5.8 | 0.44 | 230 | 6.3 × 5.8 | 0.44 | 230 | 6.3 × 5.8 | 0.44 | 230 | 6.3 × 5.8 | 0.44 | 230 | 6.3 × 7.7 | 0.68 | 185 |
| 47 | 470 | 5 × 5.8 | 0.76 | 150 | 6.3 × 5.8 | 0.44 | 230 | 6.3 × 5.8 | 0.44 | 230 | 6.3 × 5.8 | 0.44 | 230 | 6.3 × 5.8 | 0.44 | 230 | 6.3 × 5.8 | 0.44 | 230 | 6.3 × 7.7 | 0.68 | 185 |
| 56 | 560 | 5 × 5.8 | 0.76 | 150 | 6.3 × 5.8 | 0.44 | 230 | 6.3 × 5.8 | 0.44 | 230 | 6.3 × 5.8 | 0.44 | 230 | 6.3 × 5.8 | 0.44 | 230 | 6.3 × 7.7 | 0.34 | 280 | 8 × 10 | 0.34 | 300 |
| 68 | 680 | 6.3 × 5.8 | 0.44 | 230 | 6.3 × 5.8 | 0.44 | 230 | 6.3 × 5.8 | 0.44 | 230 | 6.3 × 5.8 | 0.44 | 230 | 6.3 × 5.8 | 0.44 | 230 | 6.3 × 7.7 | 0.34 | 280 | 8 × 10 | 0.34 | 300 |
| 100 | 101 | 6.3 × 5.8 | 0.44 | 230 | 6.3 × 5.8 | 0.44 | 230 | 6.3 × 5.8 | 0.44 | 230 | 6.3 × 7.7 | 0.34 | 280 | 8 × 10 | 0.17 | 450 | 8 × 10 | 0.17 | 450 | 10 × 10 | 0.18 | 670 |
| 150 | 151 | 6.3 × 5.8 | 0.44 | 230 | 6.3 × 5.8 | 0.44 | 230 | 6.3 × 7.7 | 0.34 | 280 | 8 × 10 | 0.17 | 450 | 8 × 10 | 0.17 | 450 | 8 × 10 | 0.17 | 450 | 10 × 10 | 0.18 | 670 |
| 220 | 221 | 6.3 × 5.8 | 0.44 | 230 | 6.3 × 7.7 | 0.34 | 280 | 6.3 × 7.7 | 0.34 | 280 | 8 × 10 | 0.17 | 450 | 8 × 10 | 0.17 | 450 | 8 × 10 | 0.17 | 450 | 10 × 10 | 0.18 | 670 |
| 330 | 331 | 6.3 × 7.7 | 0.34 | 280 | 8 × 10 | 0.17 | 450 | 8 × 10 | 0.17 | 450 | 8 × 10 | 0.17 | 450 | 8 × 10 | 0.17 | 450 | 10 × 10 | 0.09 | 670 | | | |
| 470 | 471 | 8 × 10 | 0.17 | 450 | 8 × 10 | 0.17 | 450 | 8 × 10 | 0.17 | 450 | 10 × 10 | 0.09 | 670 | | | | | | | | | |
| 680 | 681 | 8 × 10 | 0.17 | 450 | 10 × 10 | 0.09 | 670 | 10 × 10 | 0.09 | 670 | | | | | | | | | | | | |
| 1000 | 102 | 8 × 10 | 0.17 | 450 | 10 × 10 | 0.09 | 670 | | | | | | | | | | | | | | | |
| 1500 | 152 | 10 × 10 | 0.09 | 670 | | | | | | | | | | | | | | | | | | |

Max. Impedance (Ω) at 20°C 100kHz,
Rated ripple current (mA_{rms}) at 105°C 100kHz

● Frequency coefficient of rated ripple current

| Frequency | 50 Hz | 120 Hz | 300 Hz | 1 kHz | 10 kHz or more |
|-------------|-------|--------|--------|-------|----------------|
| Coefficient | 0.35 | 0.50 | 0.64 | 0.83 | 1.00 |

- Taping specifications are given in page 23.
- Recommended land size, soldering by reflow are given in page 18, 19.
- Please refer to page 3 for the minimum order quantity.