

阅读申明

- 1.本站收集的数据手册和产品资料都来自互联网，版权归原作者所有。如读者和版权方有任何异议请及时告之，我们将妥善解决。
- 2.本站提供的中文数据手册是英文数据手册的中文翻译，其目的是协助用户阅读，该译文无法自动跟随原稿更新，同时也可能存在翻译上的不当。建议读者以英文原稿为参考以便获得更精准的信息。
- 3.本站提供的产品资料，来自厂商的技术支持或者使用者的心得体会等，其内容可能存在描述上的差异，建议读者做出适当判断。
- 4.如需与我们联系，请发邮件到marketing@iczoom.com，主题请标有“数据手册”字样。

Read Statement

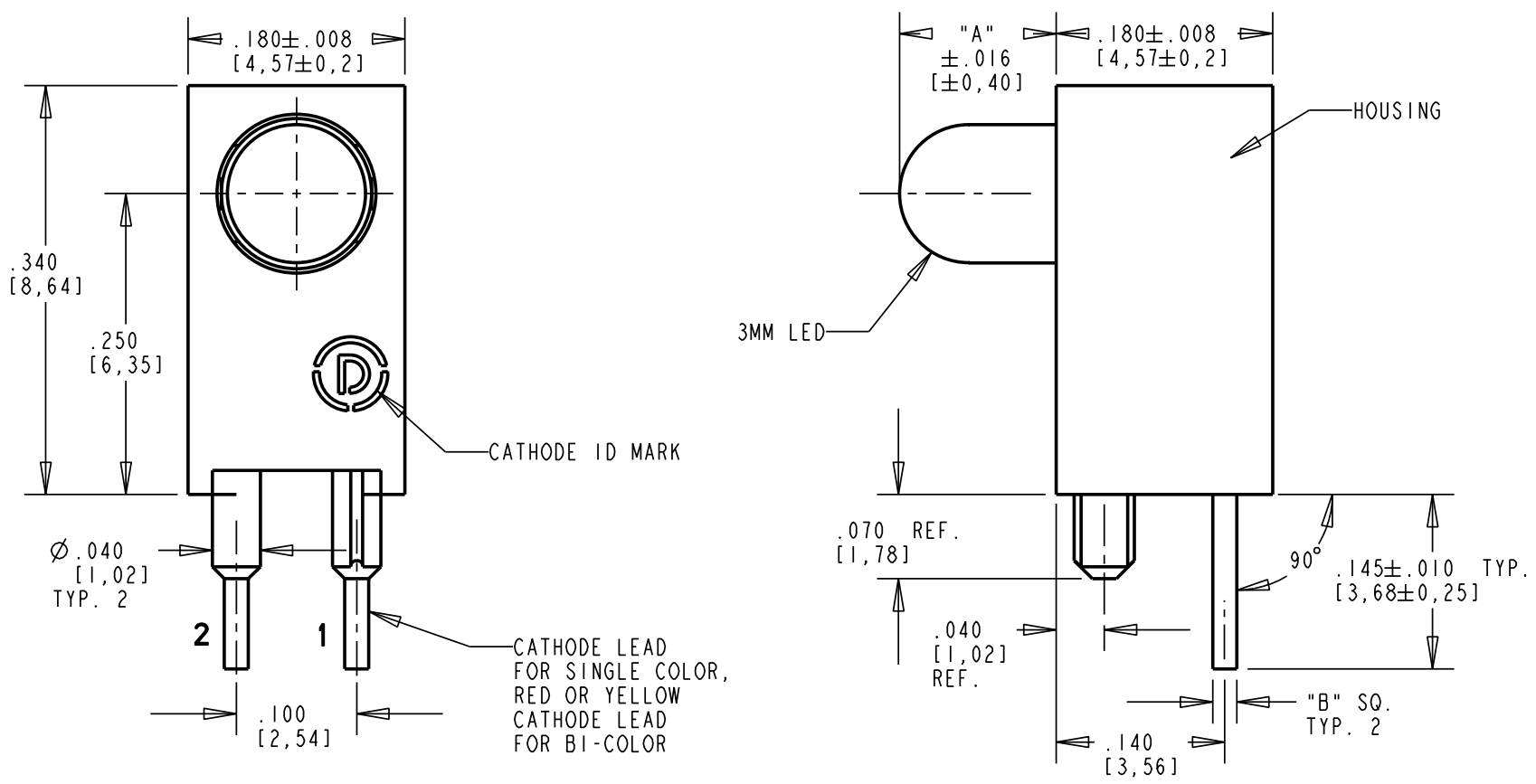
1. The datasheets and other product information on the site are all from network reference or other public materials, and the copyright belongs to the original author and original published source. If readers and copyright owners have any objections, please contact us and we will deal with it in a timely manner.
2. The Chinese datasheets provided on the website is a Chinese translation of the English datasheets. Its purpose is for reader's learning exchange only and do not involve commercial purposes. The translation cannot be automatically updated with the original manuscript, and there may also be improper translations. Readers are advised to use the English manuscript as a reference for more accurate information.
3. All product information provided on the website refer to solutions from manufacturers' technical support or users the contents may have differences in description, and readers are advised to take the original article as the standard.
4. If you have any questions, please contact us at marketing@iczoom.com and mark the subject with "Datasheets" .

OPERATING CHARACTERISTICS AT 25°C AMBIENT

PART NUMBER	FORWARD VOLTAGE/CURRENT			REVERSE VOLTAGE (V)	PEAK WAVELENGTH (nm)	DOMINANT WAVELENGTH (nm)			LUMINOUS INTENSITY (mcd)		TEST CONDITIONS
	MIN.	TYP.	MAX.		TYP.	MIN.	TYP.	MAX.	MIN.	TYP.	
551-0203F		2.1 V	3.0 V	$V_R = 3 \text{ V MIN. @ } 10 \mu\text{A}$	563	—	—	—	5.6	16.0	$I_F = 10 \text{ mA}$
551-0303F		2.1 V	3.0 V	$V_R = 3 \text{ V MIN. @ } 10 \mu\text{A}$	585	—	—	—	2.2	6.3	$I_F = 10 \text{ mA}$
551-0403F		2.0 V	3.0 V	$V_R = 3 \text{ V MIN. @ } 10 \mu\text{A}$	650	—	—	—	3.6	10	$I_F = 10 \text{ mA}$
551-0503F		10 mA	20 mA	$V_R = 5 \text{ V MIN. @ } 100 \mu\text{A}$	635	—	—	—	8.7	29	$V_F = 5 \text{ V}$
551-0603F		10 mA	20 mA	$V_R = 5 \text{ V MIN. @ } 100 \mu\text{A}$	565	—	—	—	5.6	19	$V_F = 5 \text{ V}$
551-0703F		10 mA	20 mA	$V_R = 5 \text{ V MIN. @ } 100 \mu\text{A}$	585	—	—	—	3.7	12.6	$V_F = 5 \text{ V}$
551-0803F		3.5 V	4.1 V	$V_R = 5 \text{ V MIN. @ } 10 \mu\text{A}$	428	462	465	468	7.1	12.5	$I = 10 \text{ mA}$
551-1103F		1.7 V	2.2 V	$V_R = 5 \text{ V MIN. @ } 50 \mu\text{A}$	635	—	—	—	1.0	1.6	$I_F = 2 \text{ mA}$
551-1203F		1.8 V	2.7 V	$V_R = 5 \text{ V MIN. @ } 50 \mu\text{A}$	585	—	587	—	1.0	1.6	$I_F = 2 \text{ mA}$
551-1303F		1.9 V	2.2 V	$V_R = 5 \text{ V MIN. @ } 50 \mu\text{A}$	565	—	—	—	1.0	1.6	$I_F = 2 \text{ mA}$
551-2503F	1.5 V	2.2 V	3.0 V	$V_R = 5 \text{ V MIN. @ } 100 \mu\text{A}$	600	—	—	—	3.4	7.0	$I_F = 10 \text{ mA}$
551-3003F				N/A	635/565	—	—	—	2.5/3.7	4.7/10	$I_F = 10 \text{ mA}$
		2.0/2.1	2.8/2.8				—	—	—		
551-3103F				N/A	585/565	—	—	—	2.5/2.5	4.3/6.3	$I_F = 10 \text{ mA}$
		2.1/2.1	2.8/2.8			585/583	—	589/587			

REV.	ECN NO.	REVISIONS	DRN.	CKD.	APP.	DATE
A	—	NEW RELEASE	TWC	TC	NO	8-30-05
B	—	ADDED P/N 551-0803F	CE			

PART NUMBER	LED COLOR	"A" DIMENSION	"B" DIMENSION	"C" DIMENSION
551-0203F	GREEN DIFFUSED	.140 [3,56]	.020 [0,51]	.043 [1,09]
551-0303F	YELLOW DIFFUSED	.140 [3,56]	.020 [0,51]	.043 [1,09]
551-0403F	RED DIFFUSED	.140 [3,56]	.020 [0,51]	.043 [1,09]
551-0503F	RED W/RESISTOR 5V	.130 [3,30]	.018 [0,46]	.040 [1,02]
551-0603F	GREEN W/RESISTOR 5V	.130 [3,30]	.018 [0,46]	.040 [1,02]
551-0703F	YELLOW W/RESISTOR 5V	.130 [3,30]	.018 [0,46]	.040 [1,02]
551-0803F	BLUE DIFFUSED	.136 [3,45]	.020 [0,51]	.043 [1,09]
551-1103F	2 mA RED DIFFUSED	.130 [3,30]	.018 [0,46]	.040 [1,02]
551-1203F	2 mA YELLOW DIFFUSED	.130 [3,30]	.018 [0,46]	.040 [1,02]
551-1303F	2 mA GREEN DIFFUSED	.130 [3,30]	.018 [0,46]	.040 [1,02]
551-2503F	ORANGE DIFFUSED	.130 [3,30]	.018 [0,46]	.040 [1,02]
551-3003F	RED/GREEN BI-COLOR	.136 [3,45]	.020 [0,51]	.043 [1,09]
551-3103F	YELLOW/GREEN BI-COLOR	.130 [3,30]	.020 [0,51]	.043 [1,09]

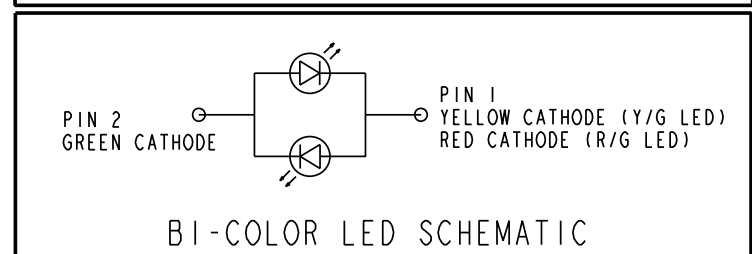
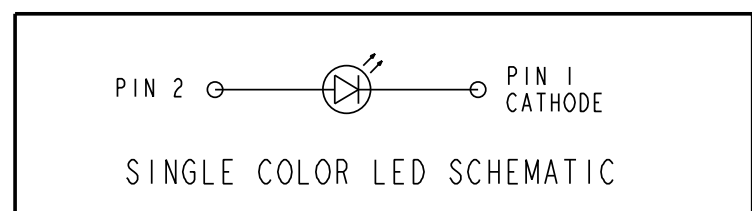
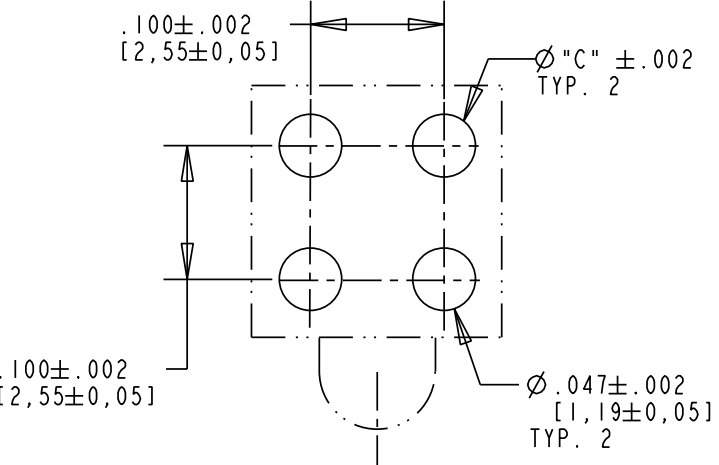


NOTES:

- LEADS TO FIT INTO HOLES SPACED AS PER HOLE PATTERN.
- LED LEAD DIMENSIONS SHOWN ARE MEASURED AT HOUSING EXIT.
- DIALIGHT PART NUMBER: 551-XX03F
- THIS ASSEMBLY CONTAINS ELECTROSTATIC DISCHARGE SENSITIVE DEVICES (ESDS). MAINTAIN ALL PRECAUTIONARY MEASURES DURING ASSEMBLY, HANDLING AND STORAGE IN ACCORDANCE WITH IPC-A-610.

RoHS Compliant 551-XX03F Thru hole CBI

Part Numbers with the "F" suffix ending are RoHS Compliant. Example: 551-3103F
 The bag packaging is marked with "RoHS Compliant" label or equivalent markings.
 Parts can be wave soldered, dip soldered or hand soldered using typical lead-free soldering process with max 260°C temp. for 5 sec.



THIS DRAWING AND THE CONTENTS HEREIN ARE CONFIDENTIAL AND THE SOLE PROPERTY OF DIALIGHT. REPRODUCTION OF THIS DRAWING OR CONSTRUCTION OF ANY PARTS WITHIN THIS DRAWING ARE FORBIDDEN WITHOUT THE WRITTEN CONSENT OF DIALIGHT.

SCALE: 7.000	DRAWING NUMBER	REV
ALL DIM'S IN: INCHES (MM)	C-17295	B
TOLERANCES: UNLESS OTHERWISE SPECIFIED	TITLE 3mm LED CBI, .250" HIGH LED RoHS COMPLIANT	
FRACTIONS: ±1/64	MATERIAL	
DECIMALS (.XX): ±.020	FINISH:	
DECIMALS (.XXX): ±.015	FSCM 83330	
DECIMALS (.XXXX): ±.0005	SHEET 1 OF 1 FAMILY TABLE:	
ANGLES: ±3°	Dialight 1501 ROUTE 34 SOUTH FARMINGDALE, NJ 07727	

RECOMMENDED P.C. BOARD HOLE PATTERN