

阅读申明

- 1.本站收集的数据手册和产品资料都来自互联网，版权归原作者所有。如读者和版权方有任何异议请及时告之，我们将妥善解决。
- 2.本站提供的中文数据手册是英文数据手册的中文翻译，其目的是协助用户阅读，该译文无法自动跟随原稿更新，同时也可能存在翻译上的不当。建议读者以英文原稿为参考以便获得更精准的信息。
- 3.本站提供的产品资料，来自厂商的技术支持或者使用者的心得体会等，其内容可能存在描述上的差异，建议读者做出适当判断。
- 4.如需与我们联系，请发邮件到marketing@iczoom.com，主题请标有“数据手册”字样。

Read Statement

1. The datasheets and other product information on the site are all from network reference or other public materials, and the copyright belongs to the original author and original published source. If readers and copyright owners have any objections, please contact us and we will deal with it in a timely manner.
2. The Chinese datasheets provided on the website is a Chinese translation of the English datasheets. Its purpose is for reader's learning exchange only and do not involve commercial purposes. The translation cannot be automatically updated with the original manuscript, and there may also be improper translations. Readers are advised to use the English manuscript as a reference for more accurate information.
3. All product information provided on the website refer to solutions from manufacturers' technical support or users the contents may have differences in description, and readers are advised to take the original article as the standard.
4. If you have any questions, please contact us at marketing@iczoom.com and mark the subject with "Datasheets".

AZ2800

40 AMP MINIATURE POWER RELAY

FEATURES

- DPST-NO and DPDT configuration
- Meets 8mm creepage, 4kV dielectric
- Epoxy sealed versions available
- UL Class F (155°C) standard
- UL, CUR file E44211
- VDE certificate 40023442

CONTACTS

Arrangement	DPST (2 Form A) DPDT (2 Form C)
Ratings	Resistive load: Max. switched power: 560W or 8310VA Max. switched current: 40A (N.O.), 3A (N.C.) Max. switched voltage: 30VDC or 600VAC *Note: If switching voltage is greater than 30VDC, special precautions must be taken. Please contact the factory.
Rated Load UL	Normally open contacts (N.O.) 40A at 277VAC, Resistive, 6k cycles [1][2] 30A at 277VAC, General Use, 100k cycles [1][2] 10A at 600VAC, General Use, 6k cycles [1] 1HP at 120VAC, 100k cycles [1][2] 2.5HP at 240VAC, 100k cycles [1][2] 8FLA / 26LRA at 277/480/600VAC, 30k cycles [1] Normally open contacts (N.O.), DC Coils only 25.3FLA / 110LRA at 240VAC, 30k cycles [1][2] Normally closed contacts (N.C.) 3A at 277VAC, General Use, 100k cycles [1][2] 2A at 480VAC, General Use, 6k cycles [1] 1A at 600VAC, General Use, 6k cycles [1] 3FLA / 3LRA at 240VAC, 30k cycles [1] 2FLA / 2LRA at 277/480VAC, 30k cycles [1] 1FLA / 1LRA at 600VAC, 30k cycles [1]
VDE	Normally open contacts (N.O.) 20A at 250VAC, Resistive, 50k cycles [2] Normally closed contacts (N.C.) 3A at 250VAC, Resistive, 50k cycles [2]
Material	Silver cadmium [1], silver tin oxide [2]
Resistance	<50 milliohms initially (24V, 1A voltage drop method)

COIL

Power	
At Pickup Voltage (typical)	925mW, DC coil 2.6VA, AC coil
Max. Continuous Dissipation	5.0W at 20°C (68°F) ambient, DC coil 7.0VA at 20°C (68°F) ambient, AC coil
Temperature Rise	48°C (86°F) at nominal coil voltage, DC coil 68°C (122°F) at nominal coil voltage, AC coil
Temperature	Max. 155°C (311°F)



GENERAL DATA

Life Expectancy Mechanical Electrical	Minimum operations 5 x 10 ⁶ 1 x 10 ⁵ at 30A, 277VAC Res. (N.O.)
Operate Time	15ms typical 25ms maximum with bounce
Release Time	10ms typical 25ms maximum with bounce (with no coil suppression)
Dielectric Strength (at sea level for 1 min.)	1500Vrms contact to contact 4000Vrms contact to coil 2000Vrms between contact sets
Insulation Resistance	10 ⁹ ohms minimum at 500VDC
Dropout	DC: Greater than 10% of nominal coil voltage AC: Greater than 20% of nominal coil voltage
Ambient Temperature Operating Storage	At nominal coil voltage DC: -40°C (-40°F) to 85°C (185°F) AC: -40°C (-40°F) to 65°C (149°F) -40°C (-40°F) to 105°C (221°F)
Vibration	0.062" (1.65mm) DA at 10–55Hz
Shock	Operational, 10g for 11ms 1/2 sine pulse (no contact opening > 100usec) Non-destructive, 100g for 11ms 1/2 sine pulse
Enclosure	P.B.T. polyester
Terminals	Quick connect tabs Note: Allow suitable slack on leads when wiring, and do not subject the terminals to excessive force.
Max. Solvent Temp.	80°C (176°F)
Max. Immersion Time	30 seconds
Weight	86 grams
Packing unit in pcs	20 per plastic tray / 100 per carton box

NOTES

1. All values at 20°C (68°F).
2. Relay may pull in with less than "Must Operate" value.
3. Specifications subject to change without notice.

AMERICAN ZETTLER, INC.

www.azettler.com

75 Columbia • Aliso Viejo, CA 92656 • Phone: (949) 831-5000 • Fax: (949) 831-8642 • E-Mail: sales@azettler.com

06/06/17

AZ2800

RELAY ORDERING DATA

COIL SPECIFICATIONS – DC Coil					ORDER NUMBER*
Nominal Coil VDC	Must Operate VDC	Max. Continuous VDC	Nominal Current mA $\pm 10\%$	Coil Resistance Ohm $\pm 10\%$	
5	3.8	8.0	326.7	15.3	AZ2800-2C-5D
6	4.5	10.5	272.0	22	AZ2800-2C-6D
12	9.0	20.7	140.0	86	AZ2800-2C-12D
24	18.0	41.8	68.5	350	AZ2800-2C-24D
48	36.0	83.4	34.5	1390	AZ2800-2C-48D
110	82.5	190.5	15.2	7255	AZ2800-2C-110D

COIL SPECIFICATIONS – AC Coil						ORDER NUMBER*
Nominal Coil VAC	Must Operate VAC	Max. Continuous VAC	Nominal Current mA $\pm 10\%$	50Hz Coil Resistance Ohm $\pm 10\%$	60Hz Coil Resistance Ohm $\pm 10\%$	
12	9.6	15.6	340.0	9.5	8	AZ2800-2C-12A
24	19.2	31.2	166.0	45	35.7	AZ2800-2C-24A
120	96.0	156.0	33.3	1125	830	AZ2800-2C-120A
220	176.0	286.0	18.2	3800	2870	AZ2800-2C-220A
240	192.0	312.0	16.7	4500	3800	AZ2800-2C-240A
277	221.6	360.1	14.4	5960	4700	AZ2800-2C-277A

* Substitute "2A" in place of "2C" to indicate 2 Form A contacts.

"2A" or "2C" denotes silver cadmium contacts.

Add suffix "E" to "2A" or "2C" for silver tin oxide contacts.

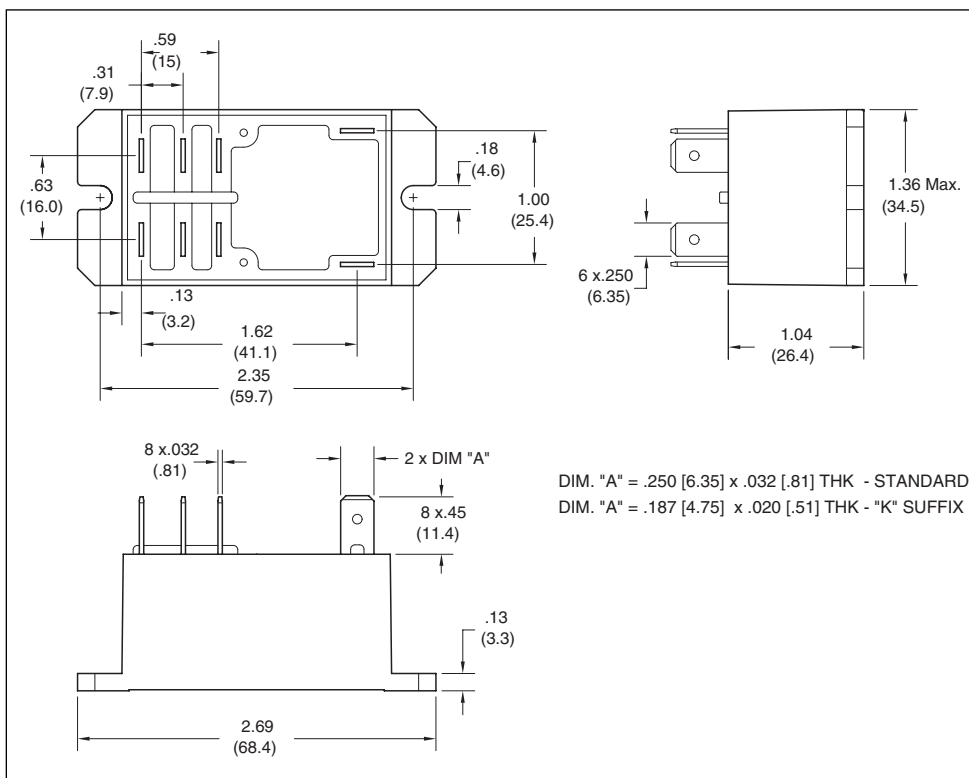
Add suffix "5" for 50Hz coil, AC coils only. (Example: AZ2800-2C-24A5).

Add suffix "6" for 50/60Hz coil, AC coils only. (Example: AZ2800-2C-24A6).

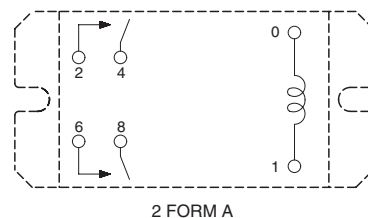
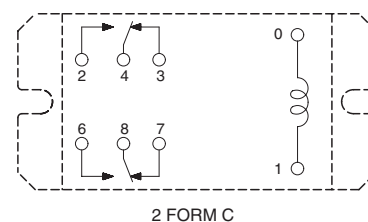
Add suffix "E" at the end of order number for sealed version.

Add suffix "K" for 0.187" x 0.020" (4.8mm x 0.5mm) coil terminals.

MECHANICAL DATA



WIRING DIAGRAM



VIEWED TOWARD TERMINALS

Dimensions in inches with metric equivalents in parentheses. Tolerance: $\pm .010$ "

AMERICAN ZETTLER, INC.

www.azettler.com

75 Columbia • Aliso Viejo, CA 92656 • Phone: (949) 831-5000 • Fax: (949) 831-8642 • E-Mail: sales@azettler.com

06/06/17