

阅读申明

- 1.本站收集的数据手册和产品资料都来自互联网，版权归原作者所有。如读者和版权方有任何异议请及时告之，我们将妥善解决。
- 2.本站提供的中文数据手册是英文数据手册的中文翻译，其目的是协助用户阅读，该译文无法自动跟随原稿更新，同时也可能存在翻译上的不当。建议读者以英文原稿为参考以便获得更精准的信息。
- 3.本站提供的产品资料，来自厂商的技术支持或者使用者的心得体会等，其内容可能存在描述上的差异，建议读者做出适当判断。
- 4.如需与我们联系，请发邮件到marketing@iczoom.com，主题请标有“数据手册”字样。

Read Statement

1. The datasheets and other product information on the site are all from network reference or other public materials, and the copyright belongs to the original author and original published source. If readers and copyright owners have any objections, please contact us and we will deal with it in a timely manner.
2. The Chinese datasheets provided on the website is a Chinese translation of the English datasheets. Its purpose is for reader's learning exchange only and do not involve commercial purposes. The translation cannot be automatically updated with the original manuscript, and there may also be improper translations. Readers are advised to use the English manuscript as a reference for more accurate information.
3. All product information provided on the website refer to solutions from manufacturers' technical support or users the contents may have differences in description, and readers are advised to take the original article as the standard.
4. If you have any questions, please contact us at marketing@iczoom.com and mark the subject with "Datasheets" .

AZ832P

POLARIZED DIP RELAY BISTABLE (LATCHING)

FEATURES

- High sensitivity, 42 mW pickup
- Low profile DIP package
- Meets FCC Part 68.302 1500 V lightning surge
- Meets FCC Part 68.304 1000 V dielectric
- Single and dual coil versions
- DC coils to 24 VDC
- High switching capacity, 60 W, 250 VA
- Fits standard 16 pin IC socket
- Epoxy sealed for automatic wave soldering and cleaning
- UL, CUR file E43203



CONTACTS

Arrangement	DPDT (2 Form C) Bifurcated crossbar contacts
Ratings	Resistive load: Max. switched power: 90 W or 125 VA Max. switched current: 3 A Max. switched voltage: 220 VDC or 250 VAC
Rated Load UL	3 A at 30 VDC resistive 2 A at 125 VAC resistive
Material	Gold plated silver against palladium silver. Gold plated palladium silver against palladium silver Gold plated silver against gold plated silver
Resistance	< 50 milliohms initially

COIL

Power At Pickup Voltage (typical)	Standard coil: 56 mW Sensitive coil: 42 mW
Max. Continuous Dissipation	0.9 W at 20°C (68°F)
Temperature	Max. 115°C (239°F)

NOTES

1. All values at 20°C (68°F).
2. Relay may pull in with less than "Must Operate" value.
3. Relay has fixed coil polarity.
4. For complete isolation between the relay's magnetic fields, it is recommended that a .197" (5.0 mm) space be provided between adjacent relays.
5. Relay adjustment may be affected if undue pressure is exerted on relay case.
6. Specifications subject to change without notice.

GENERAL DATA

Life Expectancy Mechanical Electrical	Minimum operations 2 x 10 ⁷ 1 x 10 ⁵ at 2 A, 30 VDC or 1 A, 125 VAC 2 x 10 ⁶ at 1 A, 30 VDC or .5 A, 125 VAC
Set Time (typical)	3 ms at nominal coil voltage
Reset Time (typical)	3 ms at nominal coil voltage
Bounce (typical)	3 ms
Dielectric Strength (at sea level)	1500 Vrms contact to coil 1000 Vrms between contact sets 1000 Vrms across contacts Meets FCC Part 68.302 lightning surge Meets FCC Part 68.304 V dielectric
Insulation Resistance	1000 megohms min. at 20°C, 500 VDC, 50% RH
Ambient Temperature Operating Storage	At nominal coil voltage -40°C (-40°F) to 85°C (185°F) -40°C (-40°F) to 115°C (239°F)
Vibration	50 g at 10–500 Hz
Shock	50 g
Enclosure	P.B.T. polyester
Terminals	Tinned copper alloy, P.C.
Max. Solder Temp.	270°C (518°F)
Max. Solder Time	5 seconds
Max. Solvent Temp.	80°C (176°F)
Max. Immersion Time	30 seconds
Weight	5 grams

AMERICAN ZETTLER, INC. www.azettler.com

75 COLUMBIA • ALISO VIEJO, CA 92656 • PHONE: (949) 831-5000 • FAX: (949) 831-8642 • E-MAIL: SALES@AZETTLER.COM

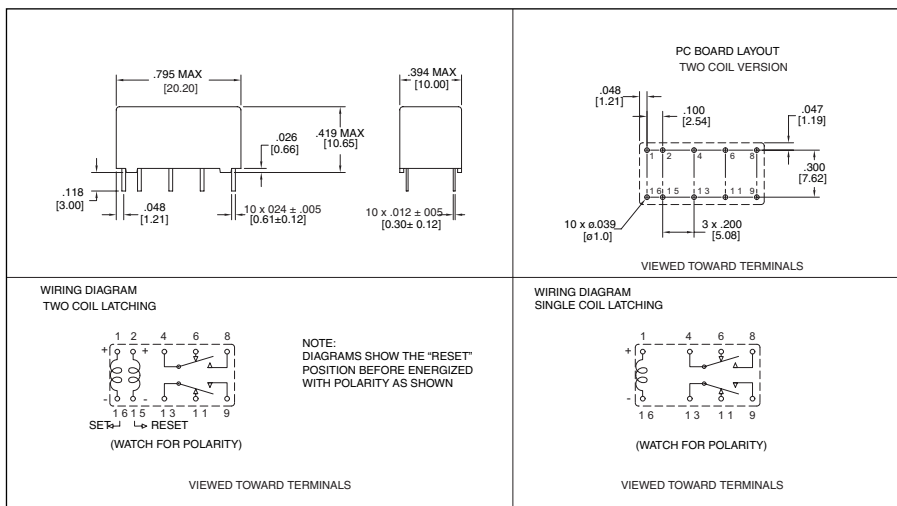
AZ832P

RELAY ORDERING DATA

STANDARD SINGLE COIL				
COIL SPECIFICATIONS				ORDER NUMBER*
Nominal Coil VDC	Max. Continuous VDC	Coil Resistance $\pm 10\%$	Set Reset VDC	
3	9.0	90	2.25	AZ832P1-2C-3DE
5	15.0	250	3.75	AZ832P1-2C-5DE
12	36.0	1,440	9.0	AZ832P1-2C-12DE
24	60.0	4,000	18.0	AZ832P1-2C-24DE
SENSITIVE SINGLE COIL				
2.25	7.8	67.5	1.69	AZ832P1-2C-2.25DSE
3	10.4	120	2.25	AZ832P1-2C-3DSE
5	17.2	330	3.75	AZ832P1-2C-5DSE
12	41.6	1,920	9.0	AZ832P1-2C-12DSE
24	83.1	7,680	18.0	AZ832P1-2C-24DSE
STANDARD DUAL COIL				
COIL SPECIFICATIONS				ORDER NUMBER*
Nominal Coil VDC	Max. Continuous VDC	Coil Resistance $\pm 10\%$	Set Reset VDC	
3	6.4	45	2.25	AZ832P2-2C-3DE
5	10.6	125	3.75	AZ832P2-2C-5DE
6	12.7	180	4.5	AZ832P2-2C-6DE
12	25.5	720	9.0	AZ832P2-2C-12DE
24	42.8	2,040	18.0	AZ832P2-2C-24DE
SENSITIVE DUAL COIL				
3	7.3	60	2.25	AZ832P2-2C-3DSE
5	12.3	167	3.75	AZ832P2-2C-5DSE
6	14.7	240	4.5	AZ832P2-2C-6DSE
12	29.4	960	9.0	AZ832P2-2C-12DSE
24	58.8	3,840	18.0	AZ832P2-2C-24DSE

*Add suffix "A" for gold plated palladium silver against palladium silver contact material. Add suffix "L" for gold plated silver against gold plated silver contact material.

MECHANICAL DATA



Dimensions in inches with metric equivalents in parentheses. Tolerance: $\pm .010$ "

AMERICAN ZETTLER, INC. www.azettler.com

75 COLUMBIA • ALISO VIEJO, CA 92656 • PHONE: (949) 831-5000 • FAX: (949) 831-8642 • E-MAIL: SALES@AZETTLER.COM