

## 阅读申明

- 1.本站收集的数据手册和产品资料都来自互联网，版权归原作者所有。如读者和版权方有任何异议请及时告之，我们将妥善解决。
- 2.本站提供的中文数据手册是英文数据手册的中文翻译，其目的是协助用户阅读，该译文无法自动跟随原稿更新，同时也可能存在翻译上的不当。建议读者以英文原稿为参考以便获得更精准的信息。
- 3.本站提供的产品资料，来自厂商的技术支持或者使用者的心得体会等，其内容可能存在描述上的差异，建议读者做出适当判断。
- 4.如需与我们联系，请发邮件到marketing@iczoom.com，主题请标有“数据手册”字样。

## Read Statement

1. The datasheets and other product information on the site are all from network reference or other public materials, and the copyright belongs to the original author and original published source. If readers and copyright owners have any objections, please contact us and we will deal with it in a timely manner.
2. The Chinese datasheets provided on the website is a Chinese translation of the English datasheets. Its purpose is for reader's learning exchange only and do not involve commercial purposes. The translation cannot be automatically updated with the original manuscript, and there may also be improper translations. Readers are advised to use the English manuscript as a reference for more accurate information.
3. All product information provided on the website refer to solutions from manufacturers' technical support or users the contents may have differences in description, and readers are advised to take the original article as the standard.
4. If you have any questions, please contact us at marketing@iczoom.com and mark the subject with "Datasheets" .

# AZ762

## 16 A SPDT MINIATURE POWER RELAY

### FEATURES

- Dielectric strength 5000 Vrms
- Low cost
- Epoxy sealed versions available
- AC and DC coils
- 16 Amp switching
- High inrush version available (80 A)
- Class B (130°C) standard
- Class F (155°C) versions available
- Isolation spacing greater than 10 mm
- UL, CUR file E44211, VDE 40006031



### CONTACTS

<b>Arrangement</b>	SPDT (1 Form C) SPST (1 Form A, 1 Form B)
<b>Ratings</b>	Resistive load: Max. switched power: 480 W or 4432 VA Max. switched current: 16 A Max. switched voltage: 150* VDC or 440 VAC  *Note: If switching voltage is greater than 30VDC, special precautions must be taken. Please contact the factory.
<b>Rated Load UL, CUR</b>	16 A at 277 VAC resistive, 50k cycles [1] 16 A at 277 VAC resistive, 100k cycles [3] 1 HP at 250 VAC [1] 1 HP at 277 VAC, 40°C (1 Form A) [1] 1/2 HP at 125 VAC [1] TV-5 at 125 VAC [1] 16 A at 277 VAC resistive, 75k cycles [2] B300 Pilot Duty [2] R300 Pilot Duty [2]
<b>VDE</b>	16 A at 250 VAC resistive [1] and [2] Contact factory for additional VDE ratings [1] Silver cadmium oxide, [2] Silver tin oxide [3] Silver nickel
<b>Material</b>	Silver cadmium oxide or silver tin oxide or silver nickel. Gold plating available
<b>Resistance</b>	< 50 milliohms initially (using 6 V 1 A method)

### COIL

<b>Power</b>	
<b>At Pickup Voltage (typical)</b>	196 mW (DC) 0.43 VA (AC)
<b>Max. Continuous Dissipation</b>	1.7 W at 20°C (68°F) ambient
<b>Temperature Rise</b>	26°C (47°F) at nominal coil voltage
<b>Max. Temperature</b>	130°C (266°F)

### GENERAL DATA

<b>Life Expectancy</b>	Minimum operations
<b>Mechanical</b>	1 x 10 <sup>7</sup>
<b>Electrical</b>	1 x 10 <sup>5</sup> at 16 A 240 VAC Res.
<b>Operate Time (typical)</b>	7 ms at nominal coil voltage
<b>Release Time (typical)</b>	3 ms at nominal coil voltage (with no coil suppression)
<b>Dielectric Strength (at sea level for 1 min.)</b>	5000 Vrms coil to contact 1000 Vrms between open contacts
<b>Insulation Resistance</b>	1000 megohms min. at 20°C 500 VDC 50% RH
<b>Dropout</b>	Greater than 10% of nominal coil voltage (DC) Greater than 15% of nominal coil voltage (AC)
<b>Ambient Temperature Operating Storage</b>	At nominal coil voltage -40°C (-40°F) to 100°C (212°F) -40°C (-40°F) to 130°C (266°F)
<b>Vibration</b>	0.062" DA at 10–55 Hz
<b>Shock</b>	10 g
<b>Enclosure</b>	P.B.T. polyester
<b>Terminals</b>	Tinned copper alloy, P.C.
<b>Max. Solder Temp.</b>	270°C (518°F)
<b>Max. Solder Time</b>	5 seconds
<b>Max. Solvent Temp.</b>	80°C (176°F)
<b>Max. Immersion Time</b>	30 seconds
<b>Weight</b>	14 grams

### NOTES

1. All values at 20°C (68°F).
2. Relay may pull in with less than "Must Operate" value.
3. Specifications subject to change without notice.

**AMERICAN ZETTLER, INC.**

[www.azettler.com](http://www.azettler.com)

75 COLUMBIA • ALISO VIEJO, CA 92656 • PHONE: (949) 831-5000 • FAX: (949) 831-8642 • E-MAIL: SALES@AZETTLER.COM

9/25/13

# AZ762

## RELAY ORDERING DATA

COIL SPECIFICATIONS - DC COIL				ORDER NUMBER*	
Nominal Coil VDC	Must Operate VDC	Max. Continuous VDC	Coil Resistance $\pm 10\%$	Unsealed	Sealed
5	3.5	10.2	62	AZ762-1C-5D	AZ762-1C-5DE
6	4.2	12.3	90	AZ762-1C-6D	AZ762-1C-6DE
12	8.4	24.7	360	AZ762-1C-12D	AZ762-1C-12DE
18	12.6	37.0	810	AZ762-1C-18D	AZ762-1C-18DE
24	16.8	49.4	1,440	AZ762-1C-24D	AZ762-1C-24DE
48	33.6	98.0	5760	AZ762-1C-48D	AZ762-1C-48DE
60	42.0	112.9	7,500	AZ762-1C-60D	AZ762-1C-60DE
110	77.0	206.9	25,200	AZ762-1C-110D	AZ762-1C-110DE

COIL SPECIFICATIONS - AC COIL					ORDER NUMBER*	
Nominal Coil VAC	Must Operate VAC	Max. Continuous VAC	Coil Current (mA)	Coil Resistance	Unsealed	Sealed
24	18.0	31.2	31.6	350 $\pm 10\%$	AZ762-1C-24AF	AZ762-1C-24AEF
115	86.3	149.5	6.6	8,100 $\pm 15\%$	AZ762-1C-115AF	AZ762-1C-115AEF
230	172.5	299.0	3.2	32,500 $\pm 15\%$	AZ762-1C-230AF	AZ762-1C-230AEF

Substitute "1A" or "1B" in place of "1C" for Form A or B respectively. Add suffix "E" to "1A" or "1B" or "1C" for silver tin oxide contacts. Add suffix "B" to "1A" or "1B" or "1C" for silver nickel contacts. Add suffix "A" for gold plated contacts. Add suffix "F" for Class F version (DC coils only). Add suffix "I" at the end of part number for high inrush version 80A (contact form 1AE only, DC coils only, no gold plating).

**AMERICAN ZETTLER, INC.**

[www.azettler.com](http://www.azettler.com)

75 COLUMBIA • ALISO VIEJO, CA 92656 • PHONE: (949) 831-5000 • FAX: (949) 831-8642 • E-MAIL: SALES@AZETTLER.COM

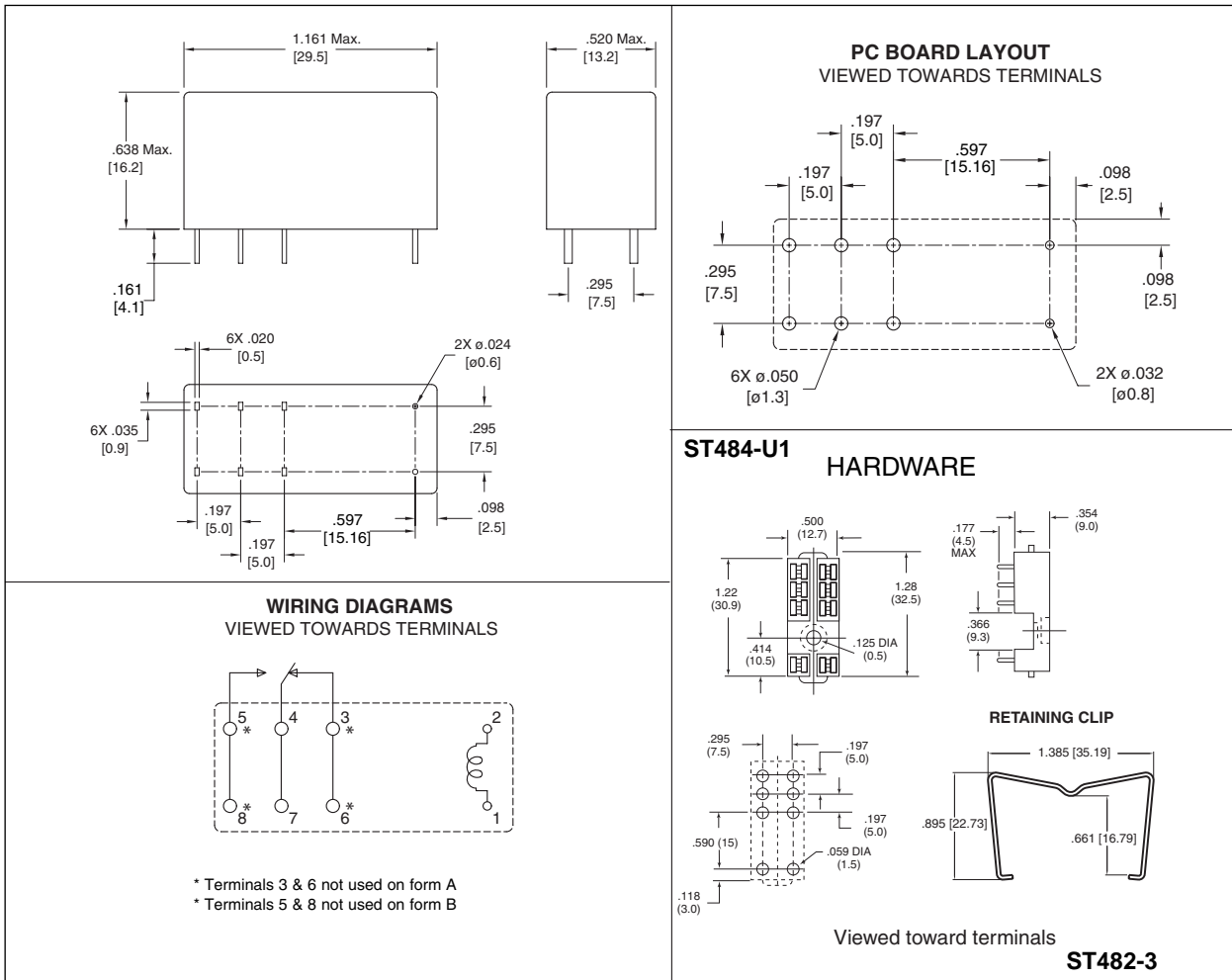
9/25/13

# AZ762

## HARDWARE ORDERING DATA

DESCRIPTION	ORDER NUMBER	DESCRIPTION	ORDER NUMBER
Socket	ST484-U1	Retainer	ST482-3

## MECHANICAL DATA



Dimensions in inches with metric equivalents in parentheses. Tolerance:  $\pm .010$ "