

## 阅读申明

- 1.本站收集的数据手册和产品资料都来自互联网，版权归原作者所有。如读者和版权方有任何异议请及时告之，我们将妥善解决。
- 2.本站提供的中文数据手册是英文数据手册的中文翻译，其目的是协助用户阅读，该译文无法自动跟随原稿更新，同时也可能存在翻译上的不当。建议读者以英文原稿为参考以便获得更精准的信息。
- 3.本站提供的产品资料，来自厂商的技术支持或者使用者的心得体会等，其内容可能存在描述上的差异，建议读者做出适当判断。
- 4.如需与我们联系，请发邮件到marketing@iczoom.com，主题请标有“数据手册”字样。

## Read Statement

1. The datasheets and other product information on the site are all from network reference or other public materials, and the copyright belongs to the original author and original published source. If readers and copyright owners have any objections, please contact us and we will deal with it in a timely manner.
2. The Chinese datasheets provided on the website is a Chinese translation of the English datasheets. Its purpose is for reader's learning exchange only and do not involve commercial purposes. The translation cannot be automatically updated with the original manuscript, and there may also be improper translations. Readers are advised to use the English manuscript as a reference for more accurate information.
3. All product information provided on the website refer to solutions from manufacturers' technical support or users the contents may have differences in description, and readers are advised to take the original article as the standard.
4. If you have any questions, please contact us at marketing@iczoom.com and mark the subject with "Datasheets" .

# PERFORMANCE PLASTIC PACKAGE ULTRA MINIATURE PURE SILICON™ CLOCK OSCILLATOR

ASFLMP



Life Size   
5.0 x 3.2 x 0.85 mm

ASFLMP



RoHS/RoHS II compliant

Moisture Sensitivity Level- MSL 1

## FEATURES:

- Ultra Miniature Pure Silicon™ Clock Oscillator
- High Performance MEMS Technology by Discera
- Low Power Consumption for high speed communication
- Exceptional Stability Over Temp. at -40 to +85°C, ±15ppm
- Extended Automotive Grade Temp. stability at -55 to +125°C, ±25ppm
- MIL-STD-883 shock and vibration compliant
- Durable QFN Plastic Compact Packaging
- Standby or Disable Tri-state function
- Low jitter (Period jitter RMS and Phase jitter RMS)
- High power supply noise reduction, -50dBc

## APPLICATIONS:

- Storage Area Networks (SATA, SAS, Fiber Channel)
- Passive Optical Networks (EPON, 10G-EPON, GPON, 10G-PON)
- Ethernet (1G, 10GBASE-T, KR/LR/SR, FCoE)
- PCI Express
- Display port

Low Jitter  
High Performance  
3G MEMS Technology!

## STANDARD SPECIFICATIONS:

### Common Key Electrical Specifications – CMOS, LVPECL, LVDS, and HCSL

Parameters	Minimum	Typical	Maximum	Units	Notes	
Frequency Range	CMOS	2.3000*		170.0000	MHz	-20 ~ +70°C -40 ~ +85°C
	CMOS	3.3000*		170.0000		-40 ~ +105°C -55 ~ +125°C
	LVPECL	2.3000*		460.0000		Commercial, Industrial temp. range
	LVDS	2.3000*		460.0000		Commercial, Industrial temp. range
	HCSL	2.3000*		460.0000		Commercial, Industrial temp. range
Operating Temperature	-20		+70	°C	See options	
Storage Temperature	-55		+150	°C		
Overall Frequency Stability	-50		+50	ppm	See options	
Supply Voltage (Vdd)	+2.25		+3.6	V		
Startup Time			5	ms		
Enable Time			20	ns	STD (Tri-state)	
			5	ms	PD option (Power Down)	
Disable Time			5	ns		
Disable Current		20	22	mA	STD (Tri-state)	
			0.095		PD option (Power Down)	
Tri-state Function (Standby/Disable)	"1" (VIH ≥ 0.75*Vdd) or Open: Oscillation "0" (VIL < 0.25*Vdd) : Hi Z			V	40kΩ pull-up resistor embedded	
Aging	-5.0		+5.0	ppm	First year	

\* For 2.3000MHz < F0 < 9.9999MHz, 6-8 weeks lead-time applies

## Key Electrical Specifications – CMOS

Parameters	Minimum	Typical	Maximum	Units	Notes
Supply Current (I <sub>dd</sub> )		31	35	mA	CL=15pF, 125MHz
Output Logic Level	V <sub>OH</sub>	0.9*V <sub>dd</sub>		V	I=±6mA
	V <sub>OL</sub>		0.1*V <sub>dd</sub>	V	
Rise Time	Tr	1.1	2.0	ns	CL=15pF
Fall Time	Tf	1.3	2.0	ns	20% to 80%
Duty Cycle		45	55	%	
Integrated Phase Jitter (J <sub>PH</sub> )		0.30	2	ps	200kHz ~ 20MHz@125MHz
		0.38	2		100kHz ~ 20MHz@125MHz
		1.70	2		12kHz ~ 20MHz@125MHz
Period Jitter RMS (J <sub>PER</sub> )		3.0		ps	

ABRACON IS  
ISO9001:2008  
CERTIFIED



2 Faraday, Suite# B | Irvine | CA 92618 Revised: 08.19.15  
Ph. 949.546.8000 | Fax. 949.546.8001  
Visit [www.abracon.com](http://www.abracon.com) for Terms and Conditions of Sale

# PERFORMANCE PLASTIC PACKAGE ULTRA MINIATURE PURE SILICON™ CLOCK OSCILLATOR

ASFLMP



Life Size   
5.0 x 3.2 x 0.85 mm

ASFLMP



RoHS/RoHS II compliant

## Key Electrical Specifications – LVPECL

Parameters		Minimum	Typical	Maximum	Units	Notes
Supply Current ( $I_{dd}$ )			56.5	58	mA	RL=50Ω
Output Logic Level	$V_{OH}$	$V_{dd}-1.08$			V	RL=50Ω
	$V_{OL}$			$V_{dd}-1.55$	V	
Peak to Peak Output Swing ( $V_{pp}$ )			800		mV	Single ended
Rise Time	$T_r$		250		ps	RL=50Ω , CL=0pF 20% to 80%
Fall Time	$T_f$		250			
Duty Cycle		48		52	%	Differential
Integrated Phase Jitter ( $J_{PH}$ )			0.25	2	ps	200kHz ~ 20MHz @156.25MHz
			0.38	2		100kHz ~ 20MHz @156.25MHz
			1.70	2		12kHz ~ 20MHz @156.25MHz
Period Jitter RMS ( $J_{PER}$ )			2.5		ps	

## Key Electrical Specifications – LVDS

Parameters		Minimum	Typical	Maximum	Units	Notes
Supply Current ( $I_{dd}$ )			29	32	mA	RL=100Ω
Output Offset Voltage ( $V_{OS}$ )		1.125		1.4	V	RL=100Ω differential
Delta Offset Voltage ( $\Delta V_{OS}$ )				50	mV	
Peak to Peak Output Swing ( $V_{pp}$ )			350		mV	Single ended
Rise Time	$T_r$		200		ps	RL=50Ω , CL=2pF 20% to 80%
Fall Time	$T_f$		200			
Duty Cycle		48		52	%	Differential
Integrated Phase Jitter ( $J_{PH}$ )			0.28	2	ps	200kHz ~ 20MHz @156.25MHz
			0.40	2		100kHz ~ 20MHz @156.25MHz
			1.70	2		12kHz ~ 20MHz @156.25MHz
Period Jitter RMS ( $J_{PER}$ )			2.5		ps	

## Key Electrical Specifications – HCSL

Parameters		Minimum	Typical	Maximum	Units	Notes
Supply Current ( $I_{dd}$ )			40	42	mA	RL=50Ω
Output Logic Level	$V_{OH}$	0.725			V	RL=50Ω
	$V_{OL}$			0.1	V	
Peak to Peak Output Swing ( $V_{pp}$ )			750		mV	Single ended
Rise Time	$T_r$	200		400	ps	RL=50Ω , CL=2pF 20% to 80%
Fall Time	$T_f$	200		400		
Duty Cycle		48		52	%	Differential
Integrated Phase Jitter ( $J_{PH}$ )			0.25	2	ps	200kHz ~ 20MHz @156.25MHz
			0.37	2		100kHz ~ 20MHz @156.25MHz
			1.70	2		12kHz ~ 20MHz @156.25MHz
Period Jitter RMS ( $J_{PER}$ )			2.5		ps	

ABRACON IS  
ISO9001:2008  
CERTIFIED



2 Faraday, Suite# B | Irvine | CA 92618 Revised: 08.19.15  
Ph. 949.546.8000 | Fax. 949.546.8001  
Visit [www.abracon.com](http://www.abracon.com) for Terms and Conditions of Sale

# PERFORMANCE PLASTIC PACKAGE ULTRA MINIATURE PURE SILICON™ CLOCK OSCILLATOR

ASFLMP



Life Size



5.0 x 3.2 x 0.85 mm

ASFLMP



RoHS/RoHS II compliant

## Absolute Maximum Ratings

Item	Minimum	Maximum	Unit	Condition
Supply Voltage	-0.3	+4.0	V	
Input Voltage	-0.3	V <sub>dd</sub> +0.3	V	
Junction Temp.		+150	°C	
Storage Temp.	-55	+150	°C	
Soldering Temp.		+260	°C	40sec max
ESD			V	
HBM		4,000		
MM		400		
CDM		1,500		

## OPTIONS AND PART IDENTIFICATION: (Left Blank if Standard)

### Programmed Orders (Quantity > 1,000pcs)

ASFLMP [ ] - [ ] MHz - [ ] [ ] - [ ] - [ ]

Output Type	Frequency in MHz	Operating Temp.	Overall Freq. Stability	Tri-state (Pin 1)	Packaging
C: CMOS	e.g. 156.2500 MHz (Maximum 4 digits after decimal)	Blank: -20°C ~ +70°C	Blank: ±50ppm	Blank: Tri-state	Blank***: Tube (72pcs / Tube)
LP: LVPECL		L: -40°C ~ +85°C	Y: ±10ppm*	PD: Power Down	T: Tape & Reel (1kpcs / reel)
LV: LVDS		X: -40°C ~ +105°C	R: ±25 ppm		T3: Tape & Reel (3kpcs / reel)
HC: HCSL		Z** : -55°C ~ +125°C			

\* Temp option L, X or -20°C ~ +70°C, only

\*\* CMOS output only

\*\*\* For Quick turn-around programmable orders < 1000pcs: Due to the immediate availability of stock and the qty of the order, the parts may be delivered as BULK: Cut Tape, Loose parts in Antistatic Bag or in Tube(s). The MOQ per the series will still apply for Tube packaging.

### Un-Programmed Orders

Blank un-programmed oscillators and our low cost portable programmer are available for quick turn engineering requirements. Please call ABRACON or visit MEMSpeed Pro II site <http://www.abracon.com/memspeedpro/MEMSpeedProFlyerII.pdf> for more information.

ASFLMP [ ] - BLANK - [ ] [ ] - [ ] - [ ]

Output Type	Operating Temp.	Overall Freq. Stability	Tri-state (Pin 1)	Packaging
C: CMOS	Blank: -20°C ~ +70°C	Blank: ±50ppm	Blank: Tri-state	Blank: Tube (72pcs / Tube)
LP: LVPECL	L: -40°C ~ +85°C	Y: ±10ppm*	PD: Power Down	T: Tape & Reel (1kpcs / reel)
LV: LVDS	X: -40°C ~ +105°C	R: ±25 ppm		T3: Tape & Reel (3kpcs / reel)
HC: HCSL	Z** : -55°C ~ +125°C			

\* Temp option L, X or -20°C ~ +70°C, only

\*\* CMOS output only

ABRACON IS  
ISO9001:2008  
CERTIFIED



2 Faraday, Suite# B | Irvine | CA 92618 Revised: 08.19.15  
Ph. 949.546.8000 | Fax. 949.546.8001  
Visit [www.abracon.com](http://www.abracon.com) for Terms and Conditions of Sale

# PERFORMANCE PLASTIC PACKAGE ULTRA MINIATURE PURE SILICON™ CLOCK OSCILLATOR

ASFLMP



Life Size



5.0 x 3.2 x 0.85 mm

ASFLMP

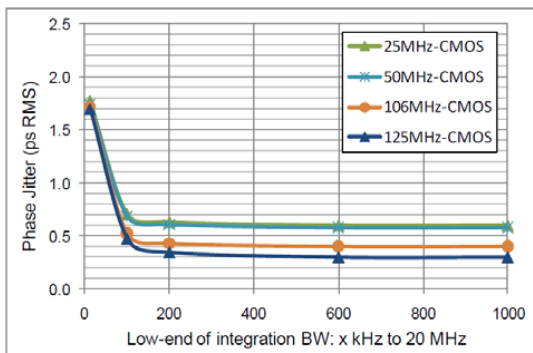


RoHS/RoHS II compliant

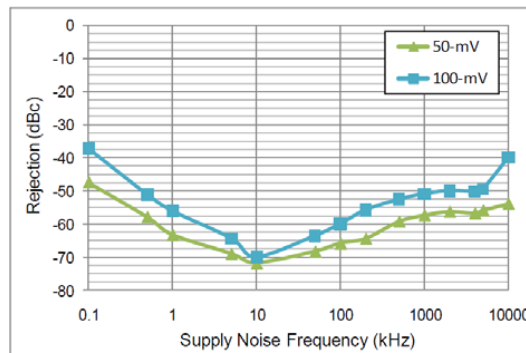
## NOMINAL PERFORMANCE PARAMETERS

(Unless specified otherwise: T=25° C, VDD=3.3 V)

### CMOS OUTPUT

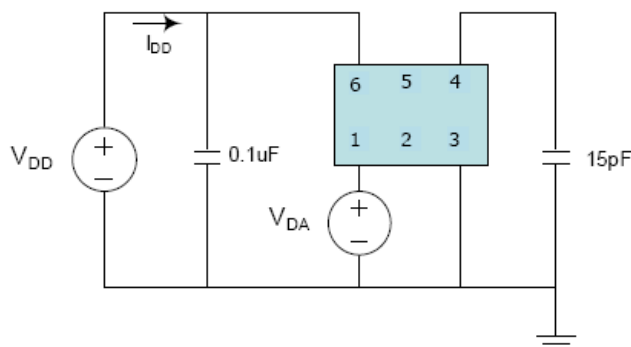


Phase jitter (integrated phase noise)

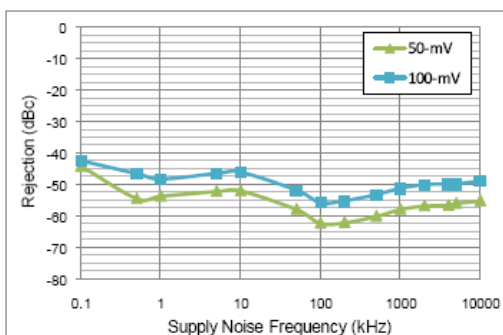


Power supply rejection ratio

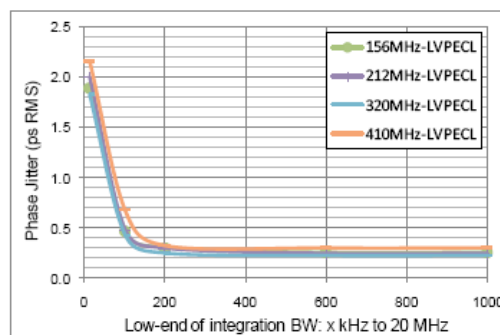
### Test Circuit



### LVPECL output

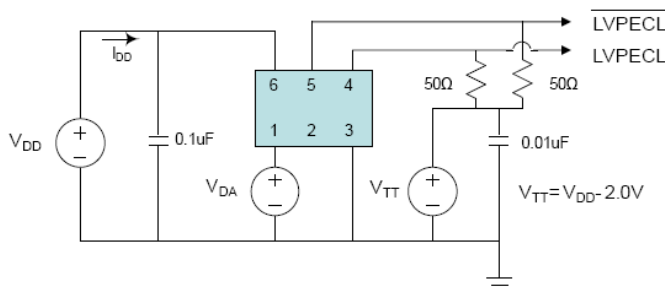


Power supply rejection ratio



Phase jitter (integrated phase noise)

### Test Circuit



ABRACON IS  
ISO9001:2008  
CERTIFIED



2 Faraday, Suite# B | Irvine | CA 92618 Revised: 08.19.15

Ph. 949.546.8000 | Fax. 949.546.8001

Visit [www.abracon.com](http://www.abracon.com) for Terms and Conditions of Sale

# PERFORMANCE PLASTIC PACKAGE ULTRA MINIATURE PURE SILICON™ CLOCK OSCILLATOR

ASFLMP



Life Size

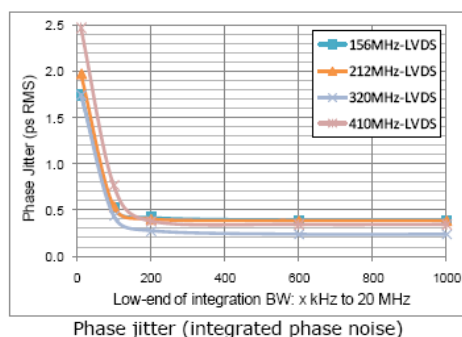
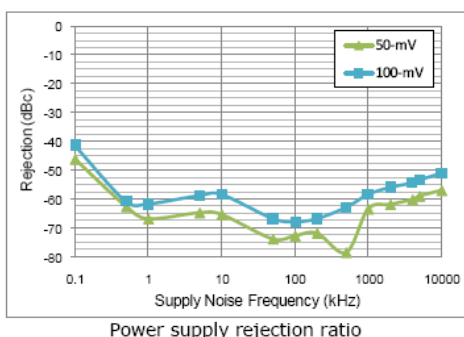
5.0 x 3.2 x 0.85 mm

ASFLMP

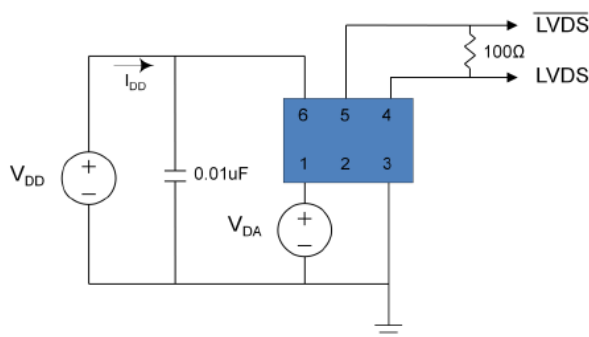


RoHS/RoHS II compliant

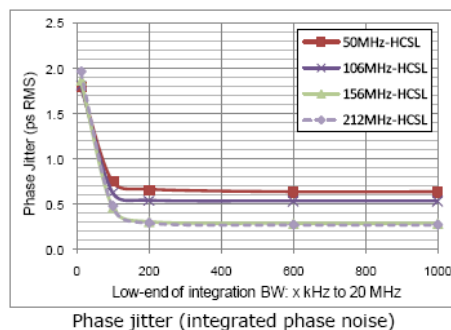
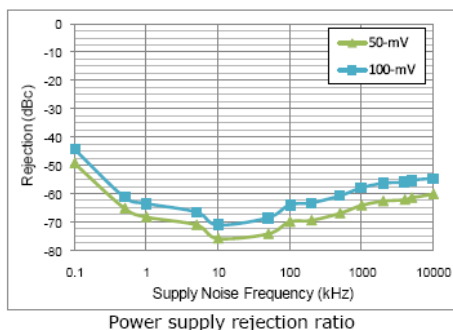
## LVDS output



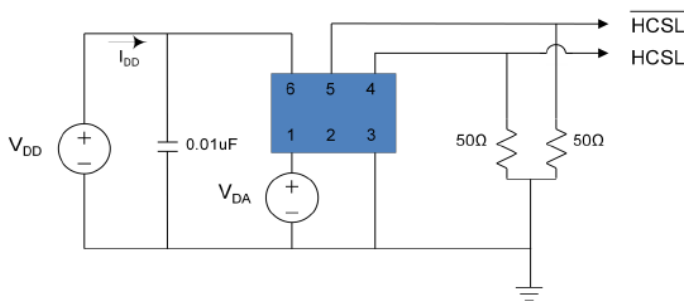
## Test Circuit



## HCSL output



## Test Circuit





# PERFORMANCE PLASTIC PACKAGE ULTRA MINIATURE PURE SILICON™ CLOCK OSCILLATOR

ASFLMP



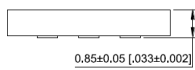
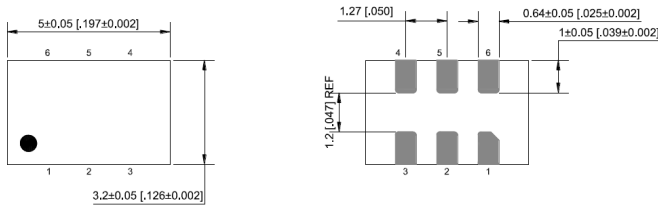
Life Size  
5.0 x 3.2 x 0.85 mm

ASFLMP



RoHS/RoHS II compliant

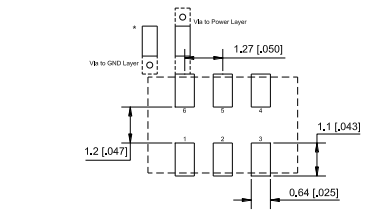
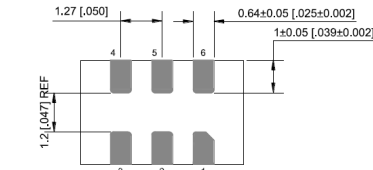
## OUTLINE DIMENSIONS:



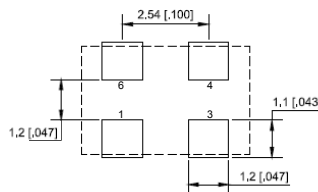
Pin #	Function
1	Tri-state
2	NC
3	GND
4	Output
5	NC (CMOS) Output (LVPECL, LVDS, HCSL)
6	Vdd

Note: Recommend using an approximately 0.01µF bypass capacitor between PIN 6 and 3.

Dimensions: mm (inches)

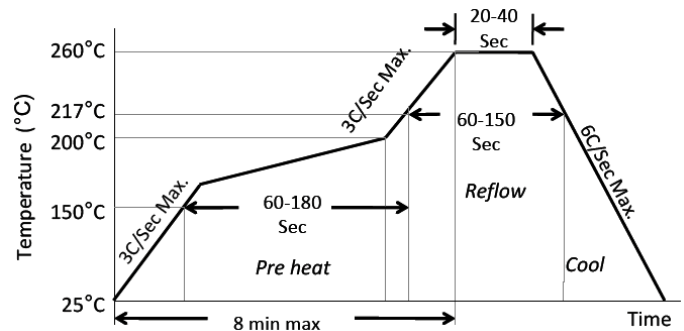


Recommended Land Pattern for LVPECL, LVDS, HCSL



Recommended Land Pattern for CMOS

## REFLOW PROFILE:

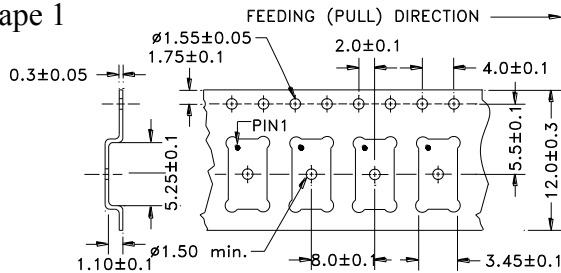


Ramp-Up Rate (200°C to Peak Temp)	3°C/Sec Max.
Preheat Time 150°C to 200°C	60-180 Sec
Time maintained above 217°C	60-150 Sec
Peak Temperature	255-260°C
Time within 5°C of actual Peak	20-40 Sec
Ramp-Down Rate	6°C/Sec Max.
Time 25°C to Peak Temperature	8 min Max.

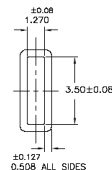
## TAPE AND REEL:

T= 1,000pcs/reel (D=180mm), T3= 3,000pcs/reel (D=330mm)

### Tape 1



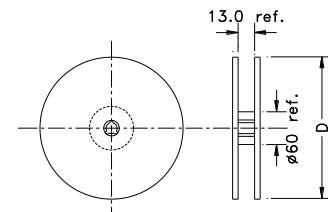
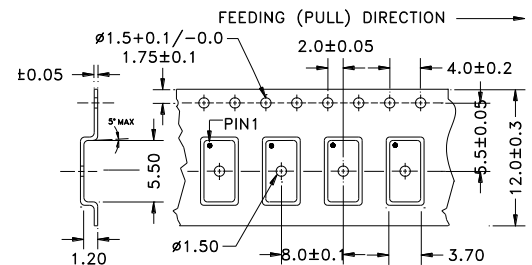
Tube: 72 pcs/tube



Unit orientation in tube:



### Tape 2



Dimensions: mm

**ATTENTION:** Abracon Corporation's products are COTS – Commercial-Off-The-Shelf products; suitable for Commercial, Industrial and, where designated, Automotive Applications. Abracon's products are not specifically designed for Military, Aviation, Aerospace, Life-dependant Medical applications or any application requiring high reliability where component failure could result in loss of life and/or property. For applications requiring high reliability and/or presenting an extreme operating environment, written consent and authorization from Abracon Corporation is required. Please contact Abracon Corporation for more information.

ABRACON IS  
ISO9001:2008  
CERTIFIED



2 Faraday, Suite# B | Irvine | CA 92618 Revised: 08.19.15

Ph. 949.546.8000 | Fax. 949.546.8001

Visit [www.abracon.com](http://www.abracon.com) for Terms and Conditions of Sale

# Mouser Electronics

Authorized Distributor

Click to View Pricing, Inventory, Delivery & Lifecycle Information:

## ABRACON:

[ASFLMPC-10.000MHZ-LR-T](#) [ASFLMPC-10.000MHZ-LY-T3](#) [ASFLMPC-10.000MHZ-T3](#) [ASFLMPC-10.000MHZ-Z-T](#)  
[ASFLMPC-100.000MHZ-LR-T](#) [ASFLMPC-100.000MHZ-LY-T3](#) [ASFLMPC-100.000MHZ-T3](#) [ASFLMPC-100.000MHZ-Z-T](#)  
[ASFLMPC-106.250MHZ-LR-T](#) [ASFLMPC-106.250MHZ-LY-T3](#) [ASFLMPC-106.250MHZ-T3](#) [ASFLMPC-](#)  
[106.250MHZ-Z-T](#) [ASFLMPC-11.0592MHZ-LR-T](#) [ASFLMPC-11.0592MHZ-LY-T3](#) [ASFLMPC-11.0592MHZ-T3](#)  
[ASFLMPC-11.0592MHZ-Z-T](#) [ASFLMPC-12.000MHZ-LR-T](#) [ASFLMPC-12.000MHZ-LY-T3](#) [ASFLMPC-12.000MHZ-T3](#)  
[ASFLMPC-12.000MHZ-Z-T](#) [ASFLMPC-12.288MHZ-LR-T](#) [ASFLMPC-12.288MHZ-LY-T3](#) [ASFLMPC-12.288MHZ-T3](#)  
[ASFLMPC-12.288MHZ-Z-T](#) [ASFLMPC-12.352MHZ-LR-T](#) [ASFLMPC-12.352MHZ-LY-T3](#) [ASFLMPC-12.352MHZ-T3](#)  
[ASFLMPC-12.352MHZ-Z-T](#) [ASFLMPC-12.500MHZ-LR-T](#) [ASFLMPC-12.500MHZ-T3](#) [ASFLMPC-12.500MHZ-Z-T](#)  
[ASFLMPC-120.000MHZ-LR-T](#) [ASFLMPC-120.000MHZ-T3](#) [ASFLMPC-120.000MHZ-Z-T](#) [ASFLMPC-125.000MHZ-LR-T](#)  
[ASFLMPC-125.000MHZ-LY-T3](#) [ASFLMPC-125.000MHZ-T3](#) [ASFLMPC-125.000MHZ-Z-T](#) [ASFLMPC-13.000MHZ-LR-](#)  
[T](#) [ASFLMPC-13.000MHZ-T3](#) [ASFLMPC-13.000MHZ-Z-T](#) [ASFLMPC-133.333MHZ-LR-T](#) [ASFLMPC-133.333MHZ-LY-](#)  
[T3](#) [ASFLMPC-133.333MHZ-T3](#) [ASFLMPC-133.333MHZ-Z-T](#) [ASFLMPC-14.31818MHZ-LR-T](#) [ASFLMPC-](#)  
[14.31818MHZ-LY-T3](#) [ASFLMPC-14.31818MHZ-T3](#) [ASFLMPC-14.31818MHZ-Z-T](#) [ASFLMPC-14.7456MHZ-LR-T](#)  
[ASFLMPC-14.7456MHZ-LY-T3](#) [ASFLMPC-14.7456MHZ-T3](#) [ASFLMPC-14.7456MHZ-Z-T](#) [ASFLMPC-15.000MHZ-LR-T](#)  
[ASFLMPC-15.000MHZ-T3](#) [ASFLMPC-15.000MHZ-Z-T](#) [ASFLMPC-150.000MHZ-LR-T](#) [ASFLMPC-150.000MHZ-LY-T3](#)  
[ASFLMPC-150.000MHZ-T3](#) [ASFLMPC-150.000MHZ-Z-T](#) [ASFLMPC-16.000MHZ-LR-T](#) [ASFLMPC-16.000MHZ-LY-T3](#)  
[ASFLMPC-16.000MHZ-T3](#) [ASFLMPC-16.000MHZ-Z-T](#) [ASFLMPC-16.384MHZ-LR-T](#) [ASFLMPC-16.384MHZ-LY-T3](#)  
[ASFLMPC-16.384MHZ-T3](#) [ASFLMPC-16.384MHZ-Z-T](#) [ASFLMPC-18.432MHZ-LR-T](#) [ASFLMPC-18.432MHZ-LY-T3](#)  
[ASFLMPC-18.432MHZ-T3](#) [ASFLMPC-18.432MHZ-Z-T](#) [ASFLMPC-19.440MHZ-LR-T](#) [ASFLMPC-19.440MHZ-T3](#)  
[ASFLMPC-19.440MHZ-Z-T](#) [ASFLMPC-20.000MHZ-LR-T](#) [ASFLMPC-20.000MHZ-LY-T3](#) [ASFLMPC-20.000MHZ-T3](#)  
[ASFLMPC-20.000MHZ-Z-T](#) [ASFLMPC-24.000MHZ-LR-T](#) [ASFLMPC-24.000MHZ-LY-T3](#) [ASFLMPC-24.000MHZ-T3](#)  
[ASFLMPC-24.000MHZ-Z-T](#) [ASFLMPC-24.576MHZ-LR-T](#) [ASFLMPC-24.576MHZ-LY-T3](#) [ASFLMPC-24.576MHZ-T3](#)  
[ASFLMPC-24.576MHZ-Z-T](#) [ASFLMPC-25.000MHZ-LR-T](#) [ASFLMPC-25.000MHZ-LY-T3](#) [ASFLMPC-25.000MHZ-T3](#)  
[ASFLMPC-25.000MHZ-Z-T](#) [ASFLMPC-26.000MHZ-LR-T](#) [ASFLMPC-26.000MHZ-T3](#) [ASFLMPC-26.000MHZ-Z-T](#)  
[ASFLMPC-27.000MHZ-LR-T](#) [ASFLMPC-27.000MHZ-LY-T3](#) [ASFLMPC-27.000MHZ-T3](#) [ASFLMPC-27.000MHZ-Z-T](#)  
[ASFLMPC-29.4912MHZ-LR-T](#) [ASFLMPC-29.4912MHZ-LY-T3](#)