

阅读申明

- 1.本站收集的数据手册和产品资料都来自互联网，版权归原作者所有。如读者和版权方有任何异议请及时告之，我们将妥善解决。
- 2.本站提供的中文数据手册是英文数据手册的中文翻译，其目的是协助用户阅读，该译文无法自动跟随原稿更新，同时也可能存在翻译上的不当。建议读者以英文原稿为参考以便获得更精准的信息。
- 3.本站提供的产品资料，来自厂商的技术支持或者使用者的心得体会等，其内容可能存在描述上的差异，建议读者做出适当判断。
- 4.如需与我们联系，请发邮件到marketing@iczoom.com，主题请标有“数据手册”字样。

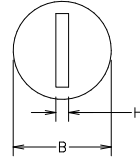
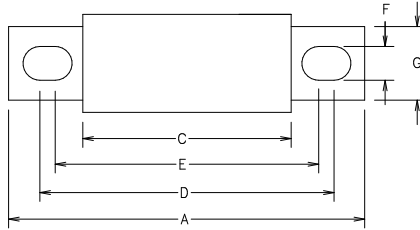
Read Statement

1. The datasheets and other product information on the site are all from network reference or other public materials, and the copyright belongs to the original author and original published source. If readers and copyright owners have any objections, please contact us and we will deal with it in a timely manner.
2. The Chinese datasheets provided on the website is a Chinese translation of the English datasheets. Its purpose is for reader's learning exchange only and do not involve commercial purposes. The translation cannot be automatically updated with the original manuscript, and there may also be improper translations. Readers are advised to use the English manuscript as a reference for more accurate information.
3. All product information provided on the website refer to solutions from manufacturers' technical support or users the contents may have differences in description, and readers are advised to take the original article as the standard.
4. If you have any questions, please contact us at marketing@iczoom.com and mark the subject with "Datasheets" .

OUTLINE REF.	MOUNTING** TYPE	DIMENSIONS IN INCHES (mm in parentheses)							
		A	B	C	D	E	F	G	H
LA70Q35 TO 60	4	4.37 (111.1)	1.22 (31.0)	1.96 (49.8)	3.69 (93.7)	2.91 (73.9)	0.34 (8.6)	1.00 (25.4)	0.19 (4.8)
LA70Q70 TO 100	4	4.37 (111.1)	1.22 (31.0)	1.96 (49.8)	3.69 (93.7)	2.91 (73.9)	0.41 (10.4)	1.00 (25.4)	0.19 (4.8)
LA70Q125 TO 200	4	5.09 (129)	1.50 (38.1)	1.96 (49.8)	4.16 (106)	2.91 (73.9)	0.41 (10.4)	1.00 (25.4)	0.25 (6.4)
LA70Q250 TO 400	4	5.09 (129)	2.00 (50.8)	1.96 (49.8)	4.00 (102)	2.94 (74.7)	0.56 (14.2)	1.50 (38.1)	0.25 (6.4)
LA70Q450 TO 600	4	7.09 (180)	2.50 (63.5)	1.96 (49.8)	5.72 (145)	3.25 (82.6)	0.56 (14.2)	2.00 (50.8)	0.38 (9.7)

** MOUNTING TYPE: 4 - BOLT-IN BLADES

PART NUMBER	AMPERE RATING	UPC CODE
LA70Q354	35	079458 15307
LA70Q404	40	079458 15308
LA70Q504	50	079458 15309
LA70Q604	60	079458 15310
LA70Q704	70	079458 15311
LA70Q804	80	079458 15312
LA70Q904	90	079458 15313
LA70Q1004	100	079458 15314
LA70Q1254	125	079458 15315
LA70Q1504	150	079458 15316
LA70Q1754	175	079458 15317
LA70Q2004	200	079458 15318
LA70Q2504	250	079458 15319
LA70Q3004	300	079458 15320
LA70Q3504	350	079458 15321
LA70Q4004	400	079458 15322
LA70Q4504	450	079458 15323
LA70Q5004	500	079458 15324
LA70Q6004	600	079458 15325



RATINGS

AC: 35-600A 700VAC, 100KA I.R.

DC: 35-600A 650VDC, 100KA I.R.

MIN. FUSE LABEL INFORMATION:
FUSES WILL BE LABELED WITH THE FOLLOWING INFORMATION:

- LITTELFUSE, INC.
- FUSE SERIES & AMP
- VOLTAGE RANGE
- INTERRUPT RATING
- UL RECOGNIZED SYMBOL
- MOUNTING TYPE

EACH BOX WILL BE LABELED WITH THE FOLLOWING INFORMATION:

- LITTELFUSE LOGO
- FUSE SERIES & AMP
- BAR CODE TO COMPLY WITH LITTELFUSE SPECIFICATION LS-000030.

NO	COMPONENT NO	DESCRIPTION	QTY/M	U/M	BILL OF MATERIAL			
					FINISH	DATE	SCALE	LBS/M
1	9	18 DRW	MRD	02/21/03	SCALE	1:2		
2	10	19	CHK	02/26/03	SUPER DRW			
3	12	20	TN	02/26/03	RAW STK WT			
4	13	21	APPD	02/27/03				
5	14	23	NO					
6	15	33						
7	16	43						
8	17	53						

UNLESS OTHERWISE SPECIFIED, DIMENSIONS DO NOT INCLUDE PLATING.

CPK DENOTES CRITICAL CHARACTERISTICS.

MINIMUM CPK VALUE DENOTES A CHARACTERISTIC THAT PROVIDES AN INDICATION OF THE PROCESS TO BE USED FOR MEASUREMENT.

CPK VALUE TO BE USED IN THE INSPECTION INSTRUCTIONS.

CPK DENOTES CP DIMENSIONS - MINIMUM CP VALUE TO BE WITHIN THE DIMENSIONAL LIMITATIONS FOR MAXIMUM TOOL LIFE.

LTR		REVISION		CHK	APD
A	60996-RELEASED	02/21/03	MRD	TN	ND

FINAL
LA70000

REVISED
A

Littelfuse
DES PLAINES, ILL. IND 60016

LA70Q 35 THRU 600A

UNCONTROLLED DOCUMENT