

## 阅读申明

- 1.本站收集的数据手册和产品资料都来自互联网，版权归原作者所有。如读者和版权方有任何异议请及时告之，我们将妥善解决。
- 2.本站提供的中文数据手册是英文数据手册的中文翻译，其目的是协助用户阅读，该译文无法自动跟随原稿更新，同时也可能存在翻译上的不当。建议读者以英文原稿为参考以便获得更精准的信息。
- 3.本站提供的产品资料，来自厂商的技术支持或者使用者的心得体会等，其内容可能存在描述上的差异，建议读者做出适当判断。
- 4.如需与我们联系，请发邮件到marketing@iczoom.com，主题请标有“数据手册”字样。

## Read Statement

1. The datasheets and other product information on the site are all from network reference or other public materials, and the copyright belongs to the original author and original published source. If readers and copyright owners have any objections, please contact us and we will deal with it in a timely manner.
2. The Chinese datasheets provided on the website is a Chinese translation of the English datasheets. Its purpose is for reader's learning exchange only and do not involve commercial purposes. The translation cannot be automatically updated with the original manuscript, and there may also be improper translations. Readers are advised to use the English manuscript as a reference for more accurate information.
3. All product information provided on the website refer to solutions from manufacturers' technical support or users the contents may have differences in description, and readers are advised to take the original article as the standard.
4. If you have any questions, please contact us at marketing@iczoom.com and mark the subject with "Datasheets" .

# ASM5P2308A

## 3.3 V Zero-Delay Buffer

### Description

ASM5P2308A is a versatile, 3.3 V zero-delay buffer designed to distribute high-speed clocks. It is available in a 16-pin package. The part has an on-chip PLL which locks to an input clock presented on the REF pin. The PLL feedback is required to be driven to FBK pin, and can be obtained from one of the outputs. The input-to-output propagation delay is guaranteed to be less than  $\pm 250$  pS, and the output-to-output skew is guaranteed to be less than 200 pS.

The ASM5P2308A has two banks of four outputs each, which can be controlled by the select inputs as shown in the *Select Input Decoding Table*. If all the output clocks are not required, Bank B can be three-stated. The select input also allows the input clock to be directly applied to the outputs for chip and system testing purposes.

Multiple ASM5P2308A devices can accept the same input clock and distribute it. In this case the skew between the outputs of the two devices is guaranteed to be less than 700 pS.

ASM5P2308A is available in five different configurations. Refer to *ASM5P2308A Configurations Table*. The ASM5P2308A-1 is the base part, where the output frequencies equal the reference clock input. The ASM5P2308A-1H is the high-drive version of the -1 and the rise and fall times on this device are faster.

ASM5P2308A-2 allows the user to obtain 2x and 1x frequencies on each output bank. The exact configuration and output frequencies depends on which output drives the feedback pin. ASM5P2308A-3 allows the user to obtain 4x and 2x frequencies on the outputs.

ASM5P2308A-4 enables the user to obtain 2x clocks on all outputs.

The ASM5P2308A-5H is a high-drive version with REF/2 output on both banks.

ASM5P2308A is an extremely versatile part, and can be used in a variety of applications.

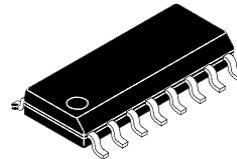
### Features

- Zero Input-output Propagation Delay, Adjustable by Capacitive Load on FBK Input
- Multiple Configurations –  
Refer to *ASM5P2308A Configurations Table*
- Input Frequency Range: 10 MHz to 133 MHz
- Multiple Low-skew Outputs
  - ◆ Output-output Skew less than 200 pS
  - ◆ Device-device Skew less than 700 pS
  - ◆ Two Banks of Four Outputs Each, Three-state by Two Select Inputs
- Less than 200 pS Cycle-to-Cycle Jitter (-1, -1H, -2, -3, -4, -5H)
- 16-pin SOIC and TSSOP Packages
- 3.3 V Operation
- Commercial and Industrial Temperature Range
- These Devices are Pb-Free, Halogen Free/BFR Free and are RoHS Compliant

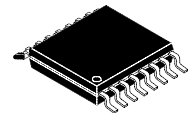


ON Semiconductor®

<http://onsemi.com>

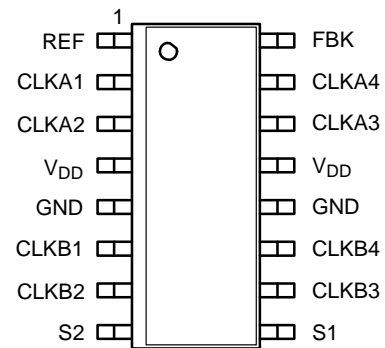


SOIC-16  
S SUFFIX  
CASE 751BG



TSSOP-16  
T SUFFIX  
CASE 948AN

### PIN CONFIGURATION



(Top View)

### ORDERING INFORMATION

See detailed ordering and shipping information in the package dimensions section on page 10 of this data sheet.



# ASM5P2308A

## Zero Delay and Skew Control

All outputs should be uniformly loaded to achieve Zero Delay between input and output.

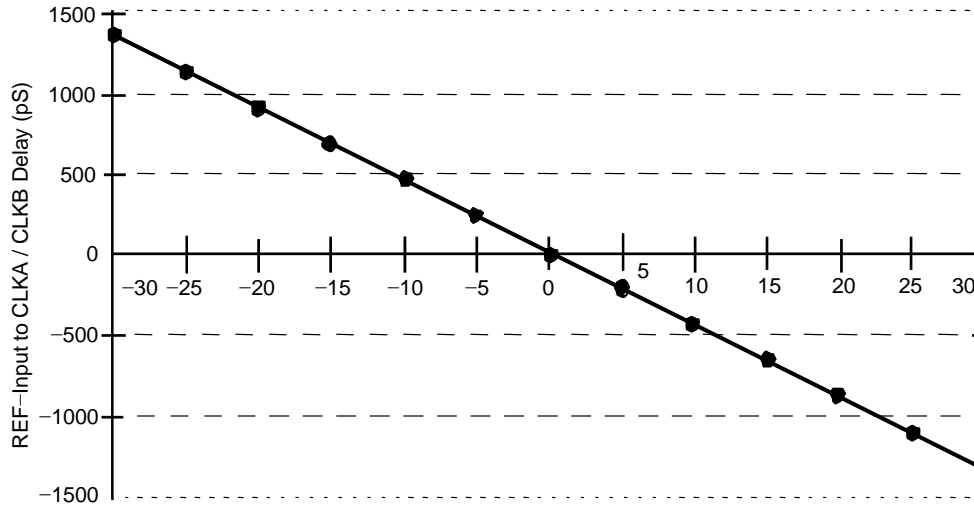


Figure 2. Output Load Difference: FBK Load – CLKA/CLKB Load (pF)

To close the feedback loop of the ASM5P2308A, the FBK can be driven from any of the eight available clock outputs. The output driving the FBK pin will be driving a total load of 7 pF plus any additional load that it drives. The relative loading of this output (with respect to the remaining outputs) can adjust the input–output delay. This is shown in the above graph.

For applications requiring zero input–output delay, all outputs including the one providing feedback should be equally loaded. If input–output delay adjustments are required, use the above graph to calculate loading differences between the feedback output and remaining outputs. For zero output–output skew, be sure to load outputs equally.

Table 3. PIN DESCRIPTION FOR ASM5P2308A

Pin #	Pin Name	Description
1	REF (Note 3)	Input reference clock frequency, 5 V tolerant input
2	CLKA1 (Note 4)	Buffered clock output, bank A
3	CLKA2 (Note 4)	Buffered clock output, bank A
4	V <sub>DD</sub>	3.3 V supply
5	GND	Ground
6	CLKB1 (Note 4)	Buffered clock output, bank B
7	CLKB2 (Note 4)	Buffered clock output, bank B
8	S2 (Note 5)	Select input, bit 2
9	S1 (Note 5)	Select input, bit 1
10	CLKB3 (Note 4)	Buffered clock output, bank B
11	CLKB4 (Note 4)	Buffered clock output, bank B
12	GND	Ground
13	V <sub>DD</sub>	3.3 V supply
14	CLKA3 (Note 4)	Buffered clock output, bank A
15	CLKA4 (Note 4)	Buffered clock output, bank A
16	FBK	PLL feedback input

- 3. Weak pull–down.
- 4. Weak pull–down on all outputs.
- 5. Weak pull–up on these inputs.

# ASM5P2308A

**Table 4. ABSOLUTE MAXIMUM RATINGS**

Parameter	Min	Max	Unit
Supply Voltage to Ground Potential	-0.5	+4.6	V
DC Input Voltage (Except REF)	-0.5	$V_{DD} + 0.5$	V
DC Input Voltage (REF)	-0.5	7	V
Storage Temperature	-65	+150	°C
Max. Soldering Temperature (10 sec)		260	°C
Junction Temperature		150	°C
Static Discharge Voltage (As per JEDEC STD22- A114-B)		2000	V

Stresses exceeding Maximum Ratings may damage the device. Maximum Ratings are stress ratings only. Functional operation above the Recommended Operating Conditions is not implied. Extended exposure to stresses above the Recommended Operating Conditions may affect device reliability.

**Table 5. OPERATING CONDITIONS**

Parameter	Description	Min	Max	Unit	
$V_{DD}$	Supply Voltage	3.0	3.6	V	
$T_A$	Operating Temperature (Ambient Temperature)	Commercial temperature	0	70	°C
		Industrial temperature	-40	85	
$C_L$	Load Capacitance, below 100 MHz		30	pF	
$C_L$	Load Capacitance, from 100 MHz to 133 MHz		15	pF	
$C_{IN}$	Input Capacitance (Note 6)		7	pF	

6. Applies to both Ref Clock and FBK.

**Table 6. ELECTRICAL CHARACTERISTICS**

Parameter	Description	Test Conditions	Min	Max	Unit	
$V_{IL}$	Input LOW Voltage			0.8	V	
$V_{IH}$	Input HIGH Voltage		2.2		V	
$I_{IL}$	Input LOW Current	$V_{IN} = 0\text{ V}$		50	$\mu\text{A}$	
$I_{IH}$	Input HIGH Current	$V_{IN} = V_{DD}$		100	$\mu\text{A}$	
$V_{OL}$	Output LOW Voltage (Note 7)	$I_{OL} = 8\text{ mA}$ (-1, -2, -3, -4) $I_{OL} = 12\text{ mA}$ (-1H, -5H)		0.4	V	
$V_{OH}$	Output HIGH Voltage (Note 7)	$I_{OH} = -8\text{ mA}$ (-1, -2, -3, -4) $I_{OH} = -12\text{ mA}$ (-1H, -5H)	2.4		V	
$I_{DD}$	Supply Current (Note 8)	Unloaded outputs at 100 MHz, Select inputs at $V_{DD}$ or GND (-1, -1H, -2, -3, -4)	Commercial temp.		40	mA
			Industrial temp.		45	
		Unloaded outputs; 100 MHz REF, Select inputs at $V_{DD}$ or GND (-5H)	Commercial temp.		30	
			Industrial temp.		35	
		Unloaded outputs at 66 MHz	Commercial temp.		32	
			Industrial temp.		34	
Unloaded outputs at 33 MHz	Commercial temp.		18			
	Industrial temp.		20			

7. Parameter is guaranteed by design and characterization. Not 100% tested in production.

8. Supply Currents are measured for PLL-Driven Mode ( $S_2 = 1, S_1 = 1$ ).

# ASM5P2308A

**Table 7. SWITCHING CHARACTERISTICS** (For all measurements use Test Circuit #1.) (Note 9)

Parameter	Test Conditions		Min	Typ	Max	Unit
Output Frequency (Refer to ASM5P2308A Configurations Table)	30 pF load	(-1, -1H)	10		100	MHz
		(-2)	12		100	
		(-3)	15		100	
		(-4)	20		100	
		(-5H)	5		66.67	
	15 pF load	(-1, -1H)	10		133	MHz
		(-2)	12		133	
		(-3)	15		133	
		(-4)	20		133	
Duty Cycle (Note 10) (-1, -2, -3, -4, -1H, -5H)	Measured at 1.4 V, F <sub>OUT</sub> ≤ 66.66 MHz, 30 pF load		40	50	60	%
Duty Cycle (Note 10) (-1, -2, -3, -4, -1H, -5H)	Measured at 1.4 V, F <sub>OUT</sub> ≤ 50 MHz, 15 pF load		45	50	55	%
Output Rise Time (Note 10) (-1, -2, -3, -4)	Measured between 0.8 V and 2.0 V, 30 pF load	Commercial temp.			2.2	nS
		Industrial temp.			2.5	
Output Rise Time (Note 10) (-1, -2, -3, -4)	Measured between 0.8 V and 2.0 V, 15 pF load	Commercial temp., Industrial temp.			1.5	nS
Output Rise Time (Note 10) (-1H, -5H)	Measured between 0.8 V and 2.0 V, 30 pF load			1.5	2	nS
Output Fall Time (Note 10) (-1, -2, -3, -4)	Measured between 2.0 V and 0.8 V, 30 pF load	Commercial temp.			2.2	nS
		Industrial temp.			2.5	
Output Fall Time (Note 10) (-1, -2, -3, -4)	Measured between 2.0 V and 0.8 V, 15 pF load	Commercial temp., Industrial temp.			1.5	nS
Output Fall Time (Note 10) (-1H, -5H)	Measured between 2.0 V and 0.8 V, 30 pF load			1.25	1.5	nS
Output-to-output skew on same bank (Note 10) (-1, -2, -3, -4)	All outputs equally loaded				200	pS
Output-to-output skew (Note 10) (-1H, -5H)	All outputs equally loaded				200	pS
Output bank A -to- output Bank B skew (Note 10) (-1, -4, -5H)	All outputs equally loaded				200	pS
Output bank A -to- output Bank B skew (Note 10) (-2, -3)	All outputs equally loaded				400	pS
Delay, REF Rising Edge to FBK Rising Edge (Notes 10, 11)	Measured at V <sub>DD</sub> /2			0	±250	pS
Device-to-Device Skew (Note 10)	Measured at V <sub>DD</sub> /2 on the FBK pins of the device			0	700	
Cycle-to-Cycle Jitter (Note 10) (-1, -1H, -4, -5H)	Measured at 66.67 MHz, loaded outputs, 15 pF load				200	
	Measured at 66.67 MHz, loaded outputs, 30 pF load				200	
	Measured at 133.3 MHz, loaded outputs, 15 pF load (Note 12)				125	
Cycle-to-Cycle Jitter (Note 10) (-2, -3)	Measured at 66.67 MHz, loaded outputs, 15 pF load				400	
	Measured at 66.67 MHz, loaded outputs, 30 pF load					
PLL Lock Time (Note 10)	Stable power supply, valid clock presented on REF and FBK pins				1.0	mS

9. All parameters are specified at Commercial and Industrial temperature unless stated otherwise.

10. Parameter is guaranteed by design and characterization. Not 100% tested in production.

11. Refer to Test Circuit #2 \*Not applicable for (-1, -2, -1H, -2H).

12. Not applicable for -5H.

# ASM5P2308A

## Switching Waveforms

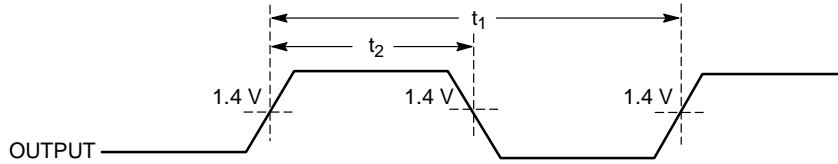


Figure 3. Duty Cycle Timing

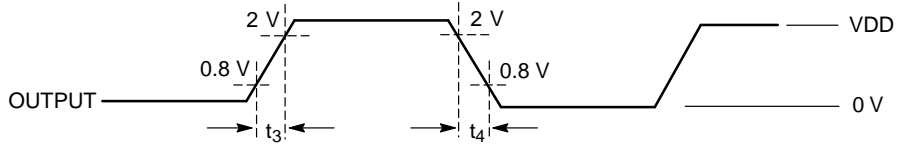


Figure 4. All Outputs Rise/Fall Time

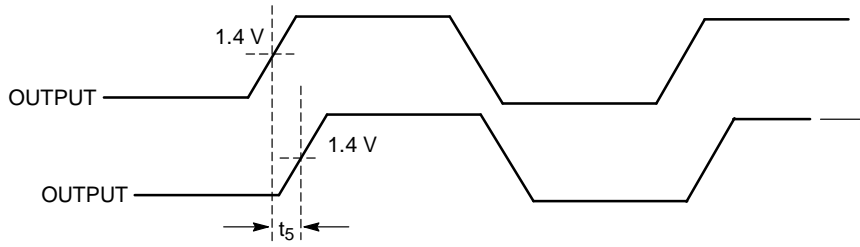


Figure 5. Output-Output Skew

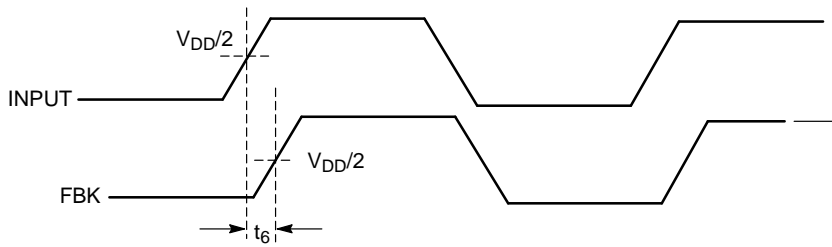


Figure 6. Input-Output Propagation Delay

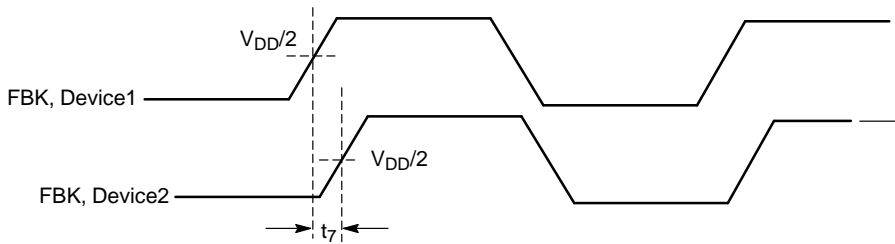
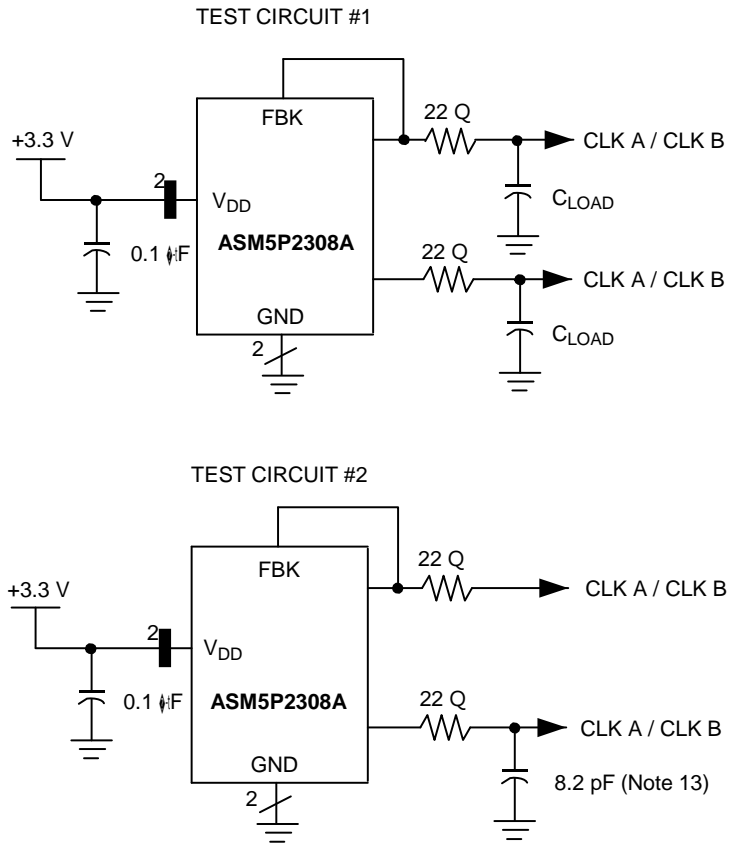


Figure 7. Device-Device Skew

# ASM5P2308A



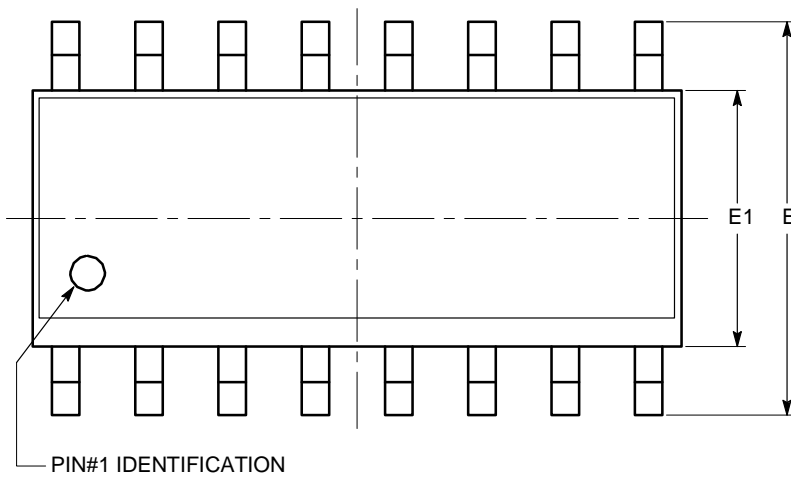
13. Refer to Test Circuit #2 \*Not applicable for (-1, -2, -1H, -2H).



# ASM5P2308A

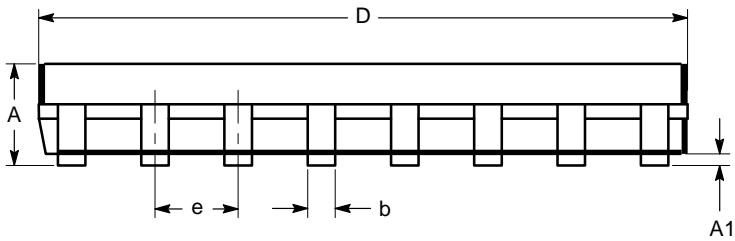
## PACKAGE DIMENSIONS

SOIC-16, 150 mils  
CASE 751BG-01  
ISSUE O

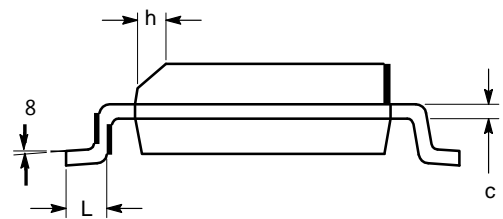


SYMBOL	MIN	NOM	MAX
A	1.35		1.75
A1	0.10		0.25
b	0.33		0.51
c	0.19		0.25
D	9.80	9.90	10.00
E	5.80	6.00	6.20
E1	3.80	3.90	4.00
e	1.27 BSC		
h	0.25		0.50
L	0.40		1.27
$\theta$	0°		8°

TOP VIEW



SIDE VIEW



END VIEW

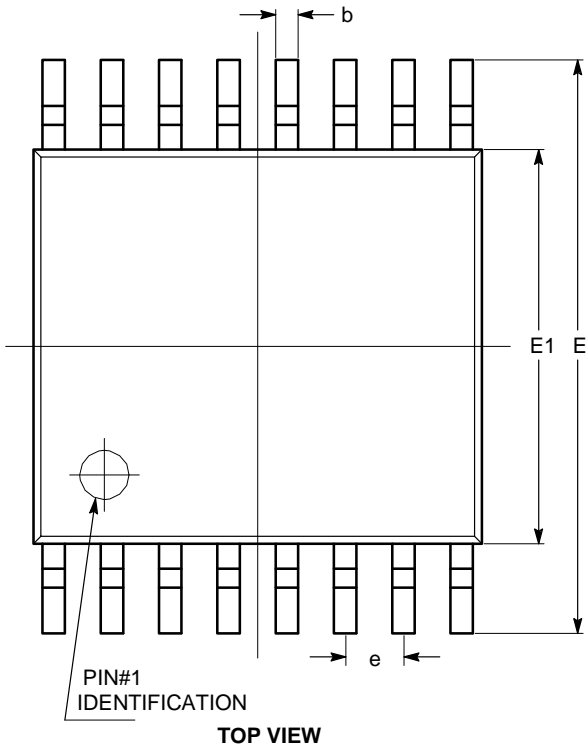
**Notes:**

- (1) All dimensions are in millimeters. Angles in degrees.
- (2) Complies with JEDEC MS-012.

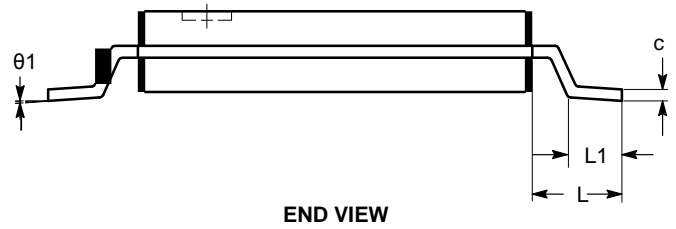
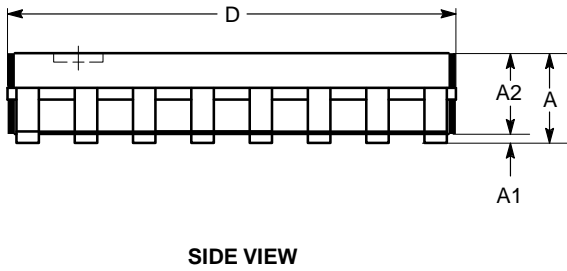
# ASM5P2308A

## PACKAGE DIMENSIONS

TSSOP16, 4.4x5  
CASE 948AN-01  
ISSUE O



SYMBOL	MIN	NOM	MAX
A			1.10
A1	0.05		0.15
A2	0.85		0.95
b	0.19		0.30
c	0.13		0.20
D	4.90		5.10
E	6.30		6.50
E1	4.30		4.50
e	0.65 BSC		
L	1.00 REF		
L1	0.45		0.75
$\theta$	0°		8°



### Notes:


- (1) All dimensions are in millimeters. Angles in degrees.
- (2) Complies with JEDEC MO-153.

## ASM5P2308A

**Table 8. ORDERING INFORMATION**

Part Number	Marking	Package Type	Temperature
ASM5P2308AF-1-16-ST	5P2308AF-1	16-pin 150-mil SOIC-TUBE, Pb free	Commercial
ASM5I2308AF-1-16-ST	5I2308AF-1	16-pin 150-mil SOIC-TUBE, Pb free	Industrial
ASM5P2308AF-1-16-SR	5P2308AF-1	16-pin 150-mil SOIC-TAPE & REEL, Pb free	Commercial
ASM5I2308AF-1-16-SR	5I2308AF-1	16-pin 150-mil SOIC-TAPE & REEL, Pb free	Industrial
ASM5P2308AF-1-16-TT	5P2308AF-1	16-PIN 150-mil TSSOP - TUBE, Pb free	Commercial
ASM5I2308AF-1-16-TT	5I2308AF-1	16-PIN 150-mil TSSOP - TUBE, Pb free	Industrial
ASM5P2308AF-1-16-TR	5P2308AF-1	16-PIN 150-mil TSSOP - TAPE & REEL, Pb free	Commercial
ASM5I2308AF-1-16-TR	5I2308AF-1	16-PIN 150-mil TSSOP - TAPE & REEL, Pb free	Industrial
P5P2308AF-1H16ST	5P2308AF-1H	16-pin 150-mil SOIC-TUBE, Pb free	Commercial
ASM5I2308AF-1H-16-ST	5I2308AF-1H	16-pin 150-mil SOIC-TUBE, Pb free	Industrial
P5P2308AF-1H16SR	5P2308AF-1H	16-pin 150-mil SOIC-TAPE & REEL, Pb free	Commercial
ASM5I2308AF-1H-16-SR	5I2308AF-1H	16-pin 150-mil SOIC-TAPE & REEL, Pb free	Industrial
ASM5P2308AF-1H-16-TT	5P2308AF-1H	16-PIN 150-mil TSSOP - TUBE, Pb free	Commercial
ASM5I2308AF-1H-16-TT	5I2308AF-1H	16-PIN 150-mil TSSOP - TUBE, Pb free	Industrial
P5P2308AF-1H16TR	5P2308AF-1H	16-PIN 150-mil TSSOP - TAPE & REEL, Pb free	Commercial
ASM5I2308AF-1H-16-TR	5I2308AF-1H	16-PIN 150-mil TSSOP - TAPE & REEL, Pb free	Industrial
P5P2308AF-2-16ST	5P2308AF-2	16-pin 150-mil SOIC-TUBE, Pb free	Commercial
ASM5I2308AF-2-16-ST	5I2308AF-2	16-pin 150-mil SOIC-TUBE, Pb free	Industrial
P5P2308AF-216SR	5P2308AF-2	16-pin 150-mil SOIC-TAPE & REEL, Pb free	Commercial
ASM5I2308AF-2-16-SR	5I2308AF-2	16-pin 150-mil SOIC-TAPE & REEL, Pb free	Industrial
ASM5P2308AF-2-16-TT	5P2308AF-2	16-PIN 150-mil TSSOP - TUBE, Pb free	Commercial
P5I2308AF-216TT	5I2308AF-2	16-PIN 150-mil TSSOP - TUBE, Pb free	Industrial
P5P2308AF-216TR	5P2308AF-2	16-PIN 150-mil TSSOP - TAPE & REEL, Pb free	Commercial
ASM5I2308AF-2-16-TR	5I2308AF-2	16-PIN 150-mil TSSOP - TAPE & REEL, Pb free	Industrial
ASM5P2308AF-3-16-ST	5P2308AF-3	16-pin 150-mil SOIC-TUBE, Pb free	Commercial
ASM5I2308AF-3-16-ST	5I2308AF-3	16-pin 150-mil SOIC-TUBE, Pb free	Industrial
ASM5P2308AF-3-16-SR	5P2308AF-3	16-pin 150-mil SOIC-TAPE & REEL, Pb free	Commercial
ASM5I2308AF-3-16-SR	5I2308AF-3	16-pin 150-mil SOIC-TAPE & REEL, Pb free	Industrial
ASM5P2308AF-3-16-TT	5P2308AF-3	16-PIN 150-mil TSSOP - TUBE, Pb free	Commercial
ASM5I2308AF-3-16-TT	5I2308AF-3	16-PIN 150-mil TSSOP - TUBE, Pb free	Industrial
P5P2308AF-3-16TR	5P2308AF-3	16-PIN 150-mil TSSOP - TAPE & REEL, Pb free	Commercial
ASM5I2308AF-3-16-TR	5I2308AF-3	16-PIN 150-mil TSSOP - TAPE & REEL, Pb free	Industrial
ASM5P2308AF-4-16-ST	5P2308AF-4	16-pin 150-mil SOIC-TUBE, Pb free	Commercial
ASM5I2308AF-4-16-ST	5I2308AF-4	16-pin 150-mil SOIC-TUBE, Pb free	Industrial
ASM5P2308AF-4-16-SR	5P2308AF-4	16-pin 150-mil SOIC-TAPE & REEL, Pb free	Commercial
ASM5I2308AF-4-16-SR	5I2308AF-4	16-pin 150-mil SOIC-TAPE & REEL, Pb free	Industrial
ASM5P2308AF-4-16-TT	5P2308AF-4	16-PIN 150-mil TSSOP - TUBE, Pb free	Commercial
ASM5I2308AF-4-16-TT	5I2308AF-4	16-PIN 150-mil TSSOP - TUBE, Pb free	Industrial
ASM5P2308AF-4-16-TR	5P2308AF-4	16-PIN 150-mil TSSOP - TAPE & REEL, Pb free	Commercial
ASM5I2308AF-4-16-TR	5I2308AF-4	16-PIN 150-mil TSSOP - TAPE & REEL, Pb free	Industrial
ASM5P2308AF-5H-16-ST	5P2308AF-5H	16-pin 150-mil SOIC-TUBE, Pb free	Commercial
ASM5I2308AF-5H-16-ST	5I2308AF-5H	16-pin 150-mil SOIC-TUBE, Pb free	Industrial
ASM5P2308AF-5H-16-SR	5P2308AF-5H	16-pin 150-mil SOIC-TAPE & REEL, Pb free	Commercial
ASM5I2308AF-5H-16-SR	5I2308AF-5H	16-pin 150-mil SOIC-TAPE & REEL, Pb free	Industrial
ASM5P2308AF-5H-16-TT	5P2308AF-5H	16-PIN 150-mil TSSOP - TUBE, Pb free	Commercial
ASM5I2308AF-5H-16-TT	5I2308AF-5H	16-PIN 150-mil TSSOP - TUBE, Pb free	Industrial
ASM5P2308AF-5H-16-TR	5P2308AF-5H	16-PIN 150-mil TSSOP - TAPE & REEL, Pb free	Commercial
ASM5I2308AF-5H-16-TR	5I2308AF-5H	16-PIN 150-mil TSSOP - TAPE & REEL, Pb free	Industrial

# ASM5P2308A

**ON Semiconductor** and  are registered trademarks of Semiconductor Components Industries, LLC (SCILLC). SCILLC reserves the right to make changes without further notice to any products herein. SCILLC makes no warranty, representation or guarantee regarding the suitability of its products for any particular purpose, nor does SCILLC assume any liability arising out of the application or use of any product or circuit, and specifically disclaims any and all liability, including without limitation special, consequential or incidental damages. "Typical" parameters which may be provided in SCILLC data sheets and/or specifications can and do vary in different applications and actual performance may vary over time. All operating parameters, including "Typicals" must be validated for each customer application by customer's technical experts. SCILLC does not convey any license under its patent rights nor the rights of others. SCILLC products are not designed, intended, or authorized for use as components in systems intended for surgical implant into the body, or other applications intended to support or sustain life, or for any other application in which the failure of the SCILLC product could create a situation where personal injury or death may occur. Should Buyer purchase or use SCILLC products for any such unintended or unauthorized application, Buyer shall indemnify and hold SCILLC and its officers, employees, subsidiaries, affiliates, and distributors harmless against all claims, costs, damages, and expenses, and reasonable attorney fees arising out of, directly or indirectly, any claim of personal injury or death associated with such unintended or unauthorized use, even if such claim alleges that SCILLC was negligent regarding the design or manufacture of the part. SCILLC is an Equal Opportunity/Affirmative Action Employer. This literature is subject to all applicable copyright laws and is not for resale in any manner.

## PUBLICATION ORDERING INFORMATION

### LITERATURE FULFILLMENT:

Literature Distribution Center for ON Semiconductor  
P.O. Box 5163, Denver, Colorado 80217 USA  
**Phone:** 303-675-2175 or 800-344-3860 Toll Free USA/Canada  
**Fax:** 303-675-2176 or 800-344-3867 Toll Free USA/Canada  
**Email:** [orderlit@onsemi.com](mailto:orderlit@onsemi.com)

**N. American Technical Support:** 800-282-9855 Toll Free  
USA/Canada  
**Europe, Middle East and Africa Technical Support:**  
Phone: 421 33 790 2910  
**Japan Customer Focus Center**  
Phone: 81-3-5773-3850

**ON Semiconductor Website:** [www.onsemi.com](http://www.onsemi.com)

**Order Literature:** <http://www.onsemi.com/orderlit>

For additional information, please contact your local Sales Representative

**ASM5P2308A/D**