

## 阅读申明

- 1.本站收集的数据手册和产品资料都来自互联网，版权归原作者所有。如读者和版权方有任何异议请及时告之，我们将妥善解决。
- 2.本站提供的中文数据手册是英文数据手册的中文翻译，其目的是协助用户阅读，该译文无法自动跟随原稿更新，同时也可能存在翻译上的不当。建议读者以英文原稿为参考以便获得更精准的信息。
- 3.本站提供的产品资料，来自厂商的技术支持或者使用者的心得体会等，其内容可能存在描述上的差异，建议读者做出适当判断。
- 4.如需与我们联系，请发邮件到marketing@iczoom.com，主题请标有“数据手册”字样。

## Read Statement

1. The datasheets and other product information on the site are all from network reference or other public materials, and the copyright belongs to the original author and original published source. If readers and copyright owners have any objections, please contact us and we will deal with it in a timely manner.
2. The Chinese datasheets provided on the website is a Chinese translation of the English datasheets. Its purpose is for reader's learning exchange only and do not involve commercial purposes. The translation cannot be automatically updated with the original manuscript, and there may also be improper translations. Readers are advised to use the English manuscript as a reference for more accurate information.
3. All product information provided on the website refer to solutions from manufacturers' technical support or users the contents may have differences in description, and readers are advised to take the original article as the standard.
4. If you have any questions, please contact us at marketing@iczoom.com and mark the subject with "Datasheets" .



# LH7A404 CARD ENGINE

A B C

(PRELIMINARY)

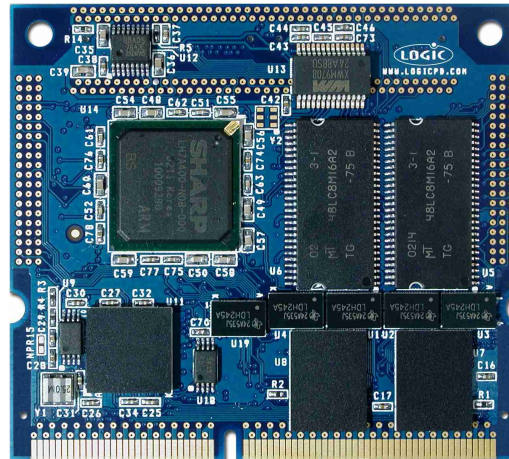
The LH7A404 Card Engine is a compact, product-ready hardware and software solution for developing embedded products with **less time, less cost, less risk ... more innovation.**

The LH7A404 Card Engine is a complete embedded computing module offering essential features for handheld and embedded networking applications in the industrial, consumer and medical markets. The use of custom peripheral boards makes the Card Engine the ideal foundation for OEMs developing handheld and compact products. The Card Engine provides a common reference pin-out on its expansion connectors, which enables customers to easily scale to next generation micro controller Card Engines when new functionality or performance is required.

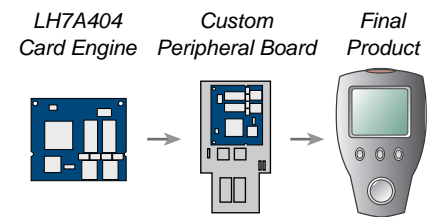
*Developing products  
is as simple as*

A B C

- A Application Development Kits
- B Board Support Packages
- C Card Engines



Actual Size (2.37" x 2.67")



## SOFTWARE HIGHLIGHTS

- Ready to run Windows™ CE or Linux BSPs
- Bootloader/Monitor
- Board Support Packages
- Custom Linux or Windows™ CE device driver development

## CUSTOMER SUPPORT

Logic provides technical support for Card Engines. Various support packages are available; contact us for more information.

- **Processor** Sharp LH7A404 32 bit ARM922TDMI RISC microprocessor
  - Running up to 200 MHz (0 to 70 Degrees C) with 100 MHz bus speed
  - Running up to 166 MHz (-40 to 85 Degrees C) with 83 MHz bus speed
- **SDRAM Memory** 32 or 64 Mbytes on board
- **Flash Memory** Up to 32 Mbytes on board
- **Display** Programmable color LCD controller
  - Built in driver supports up to 1024 x 768 x 16 bit color
  - Supports STN, Color STN, HR-TFT, AD-TFT, TFT
- **Touch Screen** Four or Five wire integrated touch interface
- **Network Support** 10/100 BASE-T Ethernet controller (application/debug)
  - SMSC LAN 91C111 (MAC & PHY)
- **Audio** Audio Codec AC97 (Wolfson WM9708)
- **PC Card Expansion**
  - Compact Flash Type 1 card (memory storage only)
  - Dual PCMCIA interface + 1 memory mode CF
  - Smart Card Interface (ISO7816)
  - MMC
- **USB** USB host and 1 device interface (USB 1.1)
- **Serial Ports** 3 X 16C550 like, standard UARTS
- **IrDA** SIR supports up to 115.2 Kbps
- **PS2** PS2 Keyboard & Mouse
- **GPIO** Programmable depending on peripheral requirements
- **SSP** Supports either Motorola SPI™, National Semiconductor MICROWIRE™, TI SSI
- **Software**
  - Windows™ CE and Linux BSPs available
  - LogicLoader™ (bootloader/monitor)
- **Mechanical**
  - Compact Size: 2.37" (60.2 mm) long x 2.67" (67.8 mm) wide x 0.17" (4.4 mm) high
  - 144 pin SODIMM Connector for connection to custom peripheral board
  - Two high density 80-pin expansion connectors for peripheral access
- **Application Development Kits**
  - Zoom™ Starter Development Kit
  - Zoom™ Integrated Development Kit (Avail. Soon)

**SHARP**

**BLUE BREAK**  
Powering Tomorrow's Vision

