

阅读申明

- 1.本站收集的数据手册和产品资料都来自互联网，版权归原作者所有。如读者和版权方有任何异议请及时告之，我们将妥善解决。
- 2.本站提供的中文数据手册是英文数据手册的中文翻译，其目的是协助用户阅读，该译文无法自动跟随原稿更新，同时也可能存在翻译上的不当。建议读者以英文原稿为参考以便获得更精准的信息。
- 3.本站提供的产品资料，来自厂商的技术支持或者使用者的心得体会等，其内容可能存在描述上的差异，建议读者做出适当判断。
- 4.如需与我们联系，请发邮件到marketing@iczoom.com，主题请标有“数据手册”字样。

Read Statement

1. The datasheets and other product information on the site are all from network reference or other public materials, and the copyright belongs to the original author and original published source. If readers and copyright owners have any objections, please contact us and we will deal with it in a timely manner.
2. The Chinese datasheets provided on the website is a Chinese translation of the English datasheets. Its purpose is for reader's learning exchange only and do not involve commercial purposes. The translation cannot be automatically updated with the original manuscript, and there may also be improper translations. Readers are advised to use the English manuscript as a reference for more accurate information.
3. All product information provided on the website refer to solutions from manufacturers' technical support or users the contents may have differences in description, and readers are advised to take the original article as the standard.
4. If you have any questions, please contact us at marketing@iczoom.com and mark the subject with "Datasheets" .



Die Datasheet, Logic Gate Device

74HC4051

8 – CHANNEL ANALOG MULTIPLEXER / DEMULTIPLEXER

Die Source:



70 mils x 79 mils x 14 mils

Backside : Silicon
Topside Metal: Aluminum

General Description:

The 74HC4051 is a member of the Industries 74xxx series of Logic devices. The 74HC4051 is a device description which contains an 8-Channel Analog multiplexer/demultiplexer.

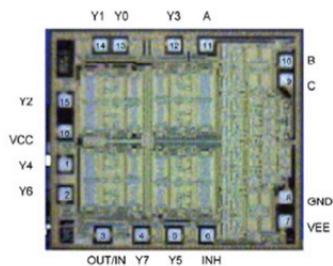
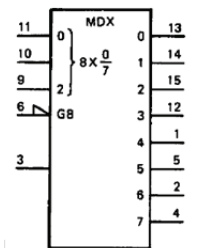
ABSOLUTE MAXIMUM RATINGS

PARAMETER	SYMBOL	CONDITIONS	LIMIT	UNITS
Supply Voltage	V_{CC}		-0.5 to +7.0	V
DC Input Diode Current	I_{IK}	$V_I = -0.5V$	-20.0	mA
		$V_I = V_{CC} + 0.5V$	20.0	mA
DC Input Voltage	V_I		-0.5 to $V_{CC} + 0.5$	V
DC Output Diode Current	I_{OK}	$V_O = -0.5V$	-20.0	mA
		$V_O = V_{CC} + 0.5V$	20.0	mA
DC Output Voltage	V_O		-0.5 to $V_{CC} + 0.5$	V
DC Output Source or Sink Current	I_O		±25.0	mA
DC VCC Current	I_{CC}		+50	mA
DC GND Current	I_{DD}		-50.0	mA
Storage Temp	T_{STG}		-65.0 to +150	°C
Max Junction Temp	T_J		150.0	°C

RECOMMENDED OPERATING CONDITIONS

PARAMETER	TECH	SYMBOL	LIMIT	UNITS
Supply Voltage		V_{CC}	2.0 to 6.0	V
	HC			
Input Voltage		V_I	0 to V_{CC}	V
Output Voltage		V_O	0 to V_{CC}	V
Operating Temperature		T_A	-40 to +85	°C
Minimum Input Rise & Fall times (@5.0V ± 0.5V)		$\Delta T/\Delta V$	500	ns/V
	HC			

IEEE / IEC LOGIC SYMBOL



DC ELECTRICAL CHARACTERISTICS

PARAMETER	TECH	SYMBOL	VCC (V)	CONDITIONS	Guarenteed Limits		UNITS	NOTE
					Min@25C	Min@85C		
Minimum HIGH level Input Voltage	HC	V_{IH}	2.0		1.50	1.50	V	
			4.5		3.15	3.15		
			6.0		4.20	4.20		
Maximum LOW level Input Voltage	HC	V_{IL}	2.0		0.50	0.50	V	
			4.0		1.35	1.35		
			4.5		1.80	1.80		
Minimum HIGH level Output Voltage	HC	V_{OH}	2.0	$I_{OUT} = -20\mu A$	1.90	1.90	V	
			4.5		4.40	4.40		
			6.0		5.90	5.90		
	HC	V_{OH}	4.5	$V_{IN} = V_{IL} \text{ or } V_{IH}, I_{OL} = -4mA$	3.98	3.84	V	
			6.0	$V_{IN} = V_{IL} \text{ or } V_{IH}, I_{OL} = -5.2mA$	5.48	5.34		



8 – CHANNEL ANALOG MULTIPLEXER / DEMULTIPLEXER

DC ELECTRICAL CHARACTERISTICS - CONT'D

PARAMETER	TECH	SYMBOL	VCC (V)	CONDITIONS	Guarenteed Limits		UNITS	NOTE
					Min@25C	Min@85C		
Maximum LOW level Output Voltage	HC	V _{OL}	2.0	I _{OUT} = 20uA	0.1	0.1	V	
			4.5		0.1	0.1		
			6.0		0.1	0.1		
	HC	V _{OL}	4.5	V _{IN} = V _{IL} or V _{IH} , I _O = 4mA	0.36	0.44	V	
			6.0	V _{IN} = V _{IL} or V _{IH} , I _O = 5.2mA	0.36	0.44		
	Maximum Input Leakage Current	HC	I _{IN}	6.0	V _I = V _{CC} or GND	±0.1	±1.0	uA
3-State Output OFF Current	HC	I _{OZ}	6.0	V _I = V _{IH} or V _{IL} , V _O = V _{CC} or GND	--	±5.0	uA	
Maximum Quiescent Supply Current	HC	I _{CC}	6.0	V _{IN} = V _{CC} or GND	--	20	uA	

AC ELECTRICAL CHARACTERISTICS

PARAMETER	TECH	SYMBOL	VCC (V)	CONDITIONS	Guarenteed Limits		Guarenteed Limits		UNITS
					Min@25C	Max@25C	Min@85C	Max@85C	
Propagation Delay, Vis to Vos	HC	t _{PLH}	2.0	GND = 0V, tr = tf = 6ns, CL = 50pF	--	60.0	--	75.0	ns
			4.5		--	12.0	--	15.0	
			6.0		--	10.0	--	13.0	
	HC	t _{PHL}	2.0	GND = 0V, tr = tf = 6ns, CL = 50pF	--	60.0	--	75.0	ns
			4.5		--	12.0	--	15.0	
			6.0		--	10.0	--	13.0	
Turn ON Time, E\ to Vos	HC	t _{PLH}	2.0	GND = 0V, tr = tf = 6ns, CL = 50pF	--	345.0	--	430.0	ns
			4.5		--	69.0	--	86.0	
			6.0		--	59.0	--	73.0	
	HC	t _{PHL}	2.0	GND = 0V, tr = tf = 6ns, CL = 50pF	--	345.0	--	430.0	ns
			4.5		--	69.0	--	86.0	
			6.0		--	59.0	--	73.0	
Turn ON Time, Sn to Vos	HC	t _{PZH}	2.0	GND = 0V, tr = tf = 6ns, CL = 50pF	--	345.0	--	430.0	ns
			4.5		--	69.0	--	86.0	
			6.0		--	59.0	--	73.0	
	HC	t _{PZL}	2.0	GND = 0V, tr = tf = 6ns, CL = 50pF	--	345.0	--	430.0	ns
			4.5		--	69.0	--	86.0	
			6.0		--	59.0	--	73.0	
HC	t _{PZL}	4.5	Above Plus VEE = -4.5V	--	51.0	--	64.0	ns	



8 – CHANNEL ANALOG MULTIPLEXER / DEMULTIPLEXER

AC ELECTRICAL CHARACTERISTICS - CONT'D

PARAMETER	TECH	SYMBOL	VCC (V)	CONDITIONS	Guarenteed Limits		Guarenteed Limits		UNITS
					Min@25C	Max@25C	Min@85C	Max@85C	
Turn OFF Time, E\ to Vos	HC	tPHZ	2.0	GND = 0V, tr = tf = 6ns, CL = 50pF	--	290.0	--	365.0	ns
			4.5		--	58.0	--	73.0	
			6.0		--	49.0	--	62.0	
			4.5		Above Plus VEE = -4.5V	--	42.0	--	
	HC	tPLZ	2.0	GND = 0V, tr = tf = 6ns, CL = 50pF	--	290.0	--	365.0	ns
			4.5		--	58.0	--	73.0	
			6.0		--	49.0	--	62.0	
			4.5		Above Plus VEE = -4.5V	--	42.0	--	
Turn OFF Time, Sn to Vos	HC	tTLH	2.0	GND = 0V, tr = tf = 6ns, CL = 50pF	--	290.0	--	365.0	ns
			4.5		--	58.0	--	73.0	
			6.0		--	49.0	--	62.0	
			4.5		Above Plus VEE = -4.5V	--	42.0	--	
	HC	tTHL	2.0	GND = 0V, tr = tf = 6ns, CL = 50pF	--	290.0	--	365.0	ns
			4.5		--	58.0	--	73.0	
			6.0		--	49.0	--	62.0	
			4.5		Above Plus VEE = -4.5V	--	42.0	--	