

阅读申明

- 1.本站收集的数据手册和产品资料都来自互联网，版权归原作者所有。如读者和版权方有任何异议请及时告之，我们将妥善解决。
- 2.本站提供的中文数据手册是英文数据手册的中文翻译，其目的是协助用户阅读，该译文无法自动跟随原稿更新，同时也可能存在翻译上的不当。建议读者以英文原稿为参考以便获得更精准的信息。
- 3.本站提供的产品资料，来自厂商的技术支持或者使用者的心得体会等，其内容可能存在描述上的差异，建议读者做出适当判断。
- 4.如需与我们联系，请发邮件到marketing@iczoom.com，主题请标有“数据手册”字样。

Read Statement

1. The datasheets and other product information on the site are all from network reference or other public materials, and the copyright belongs to the original author and original published source. If readers and copyright owners have any objections, please contact us and we will deal with it in a timely manner.
2. The Chinese datasheets provided on the website is a Chinese translation of the English datasheets. Its purpose is for reader's learning exchange only and do not involve commercial purposes. The translation cannot be automatically updated with the original manuscript, and there may also be improper translations. Readers are advised to use the English manuscript as a reference for more accurate information.
3. All product information provided on the website refer to solutions from manufacturers' technical support or users the contents may have differences in description, and readers are advised to take the original article as the standard.
4. If you have any questions, please contact us at marketing@iczoom.com and mark the subject with "Datasheets" .

100LVELT22

3.3V Dual LVTTTL/LVCMOS to Differential LVPECL Translator

General Description

The 100LVELT22 is a LVTTTL/LVCMOS to differential LVPECL translator operating from a single +3.3V supply.

Both outputs of a differential pair should be terminated in 50Ω to $V_{CC} - 2.0V$ even if only one output is being used. If an output pair is unused both outputs can be left open (un-terminated).

The 100 series is temperature compensated.

Features

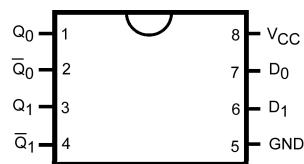
- Typical propagation delay of 350 ps
- <100 ps skew between outputs
- Max I_{CC} of 28 mA at 25°C
- When TTL input is left Open Q output defaults HIGH
- Fairchild MSOP-8 package is a drop-in replacement to ON TSSOP-8
- Flow through pinout
- Meets or exceeds JEDEC specification EIA/JESD78 IC latch-up test
- Moisture Sensitivity Level 1
- ESD Performance:
Human Body Model > 2000V
Machine Model > 200V

Ordering Code:

Order Number	Package Number	Product Code Top Mark	Package Description
100LVELT22M	M08A	KVT22	8-Lead Small Outline Integrated Circuit (SOIC), JEDEC MS-012, 0.150" Narrow
100LVELT22M8 (Preliminary)	MA08D	KR22	8-Lead Molded Small Outline Package (MSOP), JEDEC MO-187, 3.0mm Wide

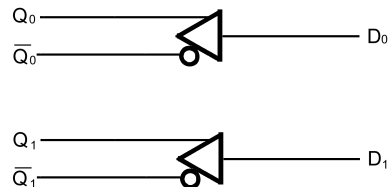
Devices also available in Tape and Reel. Specify by appending suffix letter "X" to the ordering code.

Connection Diagram



Top View

Logic Diagram



Pin Descriptions

Pin Name	Description
Q_n, \bar{Q}_n	LVPECL Differential Outputs
D_0, D_1	LVTTTL/LVCMOS Inputs
V_{CC}	Positive Supply
GND	Ground

Absolute Maximum Ratings (Note 1)

Supply Voltage (V_{CC})	0.0V to +7.0V
Input Voltage (V_I) $V_I \leq V_{CC}$	0.0V to +7.0V
DC Output Current (I_{OUT})	
Continuous	50 mA
Surge	100 mA
Storage Temperature (T_{STG})	-65°C to +150°C

Recommended Operating Conditions

Power Supply Operating	$V_{CC} = 3.0V$ to 3.8V
LVTTTL/LVCMOS Input Voltage	0.0V to V_{CC}
Free Air Operating Temperature (T_A)	-40°C to +85°C

Note 1: The "Absolute Maximum Ratings" are those values beyond which the safety of the device cannot be guaranteed. The device should not be operated at these limits. The parametric values defined in the Electrical Characteristics tables are not guaranteed at the absolute maximum rating. The "Recommended Operating Conditions" table will define the conditions for actual device operation.

LVPECL DC Electrical Characteristics $V_{CC} = 3.3V$; GND = 0.0V (Note 2)

Symbol	Parameter	-40°C			25°C			85°C			Units
		Min	Typ	Max	Min	Typ	Max	Min	Typ	Max	
I_{CC}	Power Supply Current			28			28			29	mA
V_{OH}	Output HIGH Voltage (Note 3)	2215		2420	2275		2420	2275		2420	mV
V_{OL}	Output LOW Voltage (Note 3)	1470		1745	1490		1680	1490		1680	mV

Note 2: Output parameters vary 1 to 1 with V_{CC} . V_{CC} can vary $\pm 0.15V$.

Note 3: Outputs are terminated through a 50 Ω resistor to $V_{CC} - 2.0V$.

Note: Devices are designed to meet the DC specifications after thermal equilibrium has been established. Circuit is tested with air flow greater than 500LFPM maintained.

LVTTTL/LVCMOS DC Electrical Characteristics $V_{CC} = 3.3V$; GND = 0.0V (Note 4)

Symbol	Parameter	$T_A = -40^\circ C$ to $85^\circ C$			Units	Condition
		Min	Typ	Max		
I_{IH}	Input HIGH Current			20 100	μA	$V_{IN} = 2.7V$ $V_{IN} = V_{CC}$
I_{IL}	Input LOW Current			-200	μA	$V_{IN} = 0.5V$
V_{IK}	Clamp Diode Voltage			-1.2	V	$I_{IN} = -18 mA$
V_{IH}	Input HIGH Voltage	2.0			V	
V_{IL}	Input LOW Voltage			0.8	V	

Note 4: V_{CC} can vary $\pm 0.15V$.

Note: Devices are designed to meet the DC specifications after thermal equilibrium has been established. Circuit is tested with air flow greater than 500LFPM maintained.

AC Electrical Characteristics $V_{CC} = 3.3V$; GND = 0.0V (Note 5)

Symbol	Parameter	-40°C			25°C			85°C			Units	Figure Number
		Min	Typ	Max	Min	Typ	Max	Min	Typ	Max		
f_{MAX}	Maximum Toggle Frequency			TBD			TBD			TBD	MHz	
t_{JITTER}	Cycle-to-Cycle Jitter			TBD			TBD			TBD	ps	
t_{PLH} / t_{PHL}	Propagation Delay (Note 6)	200	350	600	200	350	600	200	350	600	ps	Figure 1
t_{SKEW}	Skew Output-to-Output Part-to-Part		30	100 400		30	100 400		30	100 400	ps	
t_r, t_f	Output Rise Time Q (20% to 80%)	200		550	200		500	200		500	ns	Figure 2

Note 5: V_{CC} can vary $\pm 0.15V$.

Note 6: Specifications for standard LVTTTL input signal (see Figure 1).

Switching Waveforms

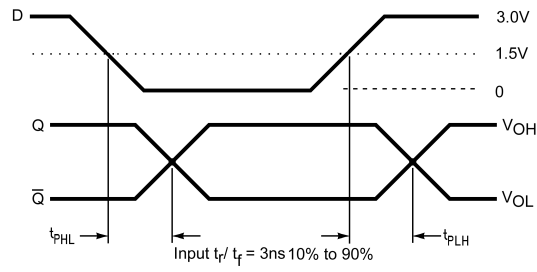


FIGURE 1. LVTTTL to Differential LVPECL Propagation Delay

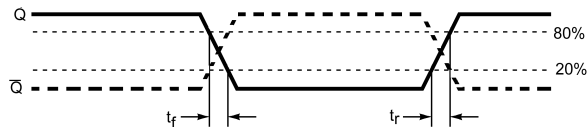
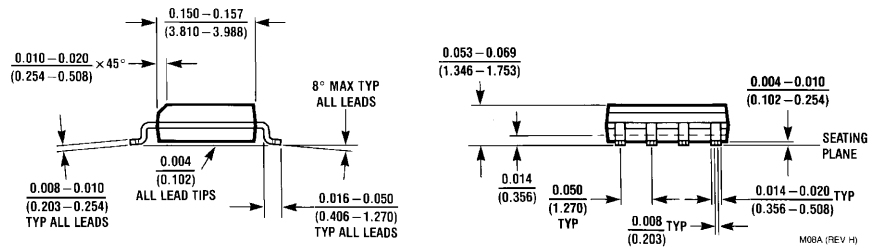
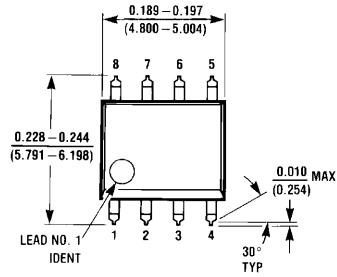


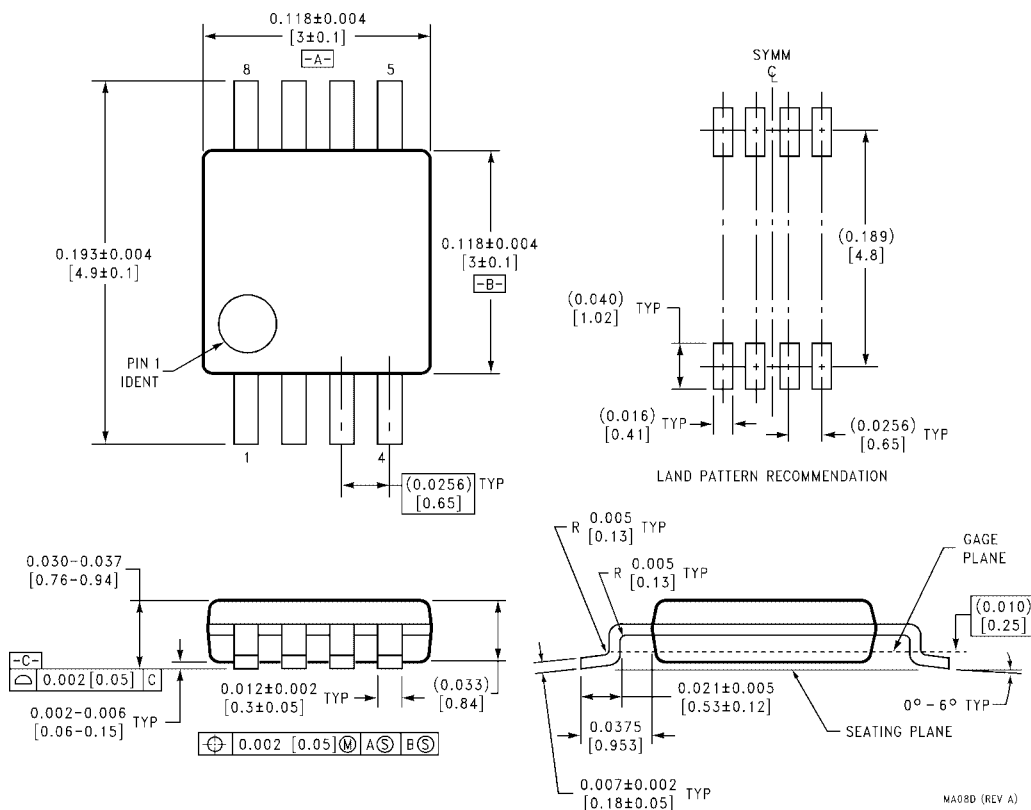
FIGURE 2. Differential Output Edge Rates

Physical Dimensions inches (millimeters) unless otherwise noted



**8-Lead Small Outline Integrated Circuit (SOIC), JEDEC MS-012, 0.150" Narrow
Package Number M08A**

Physical Dimensions inches (millimeters) unless otherwise noted (Continued)



**8-Lead Molded Small Outline Package (MSOP), JEDEC MO-187, 3.0mm Wide
Package Number MA08D**

Fairchild does not assume any responsibility for use of any circuitry described, no circuit patent licenses are implied and Fairchild reserves the right at any time without notice to change said circuitry and specifications.

LIFE SUPPORT POLICY

FAIRCHILD'S PRODUCTS ARE NOT AUTHORIZED FOR USE AS CRITICAL COMPONENTS IN LIFE SUPPORT DEVICES OR SYSTEMS WITHOUT THE EXPRESS WRITTEN APPROVAL OF THE PRESIDENT OF FAIRCHILD SEMICONDUCTOR CORPORATION. As used herein:

1. Life support devices or systems are devices or systems which, (a) are intended for surgical implant into the body, or (b) support or sustain life, and (c) whose failure to perform when properly used in accordance with instructions for use provided in the labeling, can be reasonably expected to result in a significant injury to the user.
2. A critical component in any component of a life support device or system whose failure to perform can be reasonably expected to cause the failure of the life support device or system, or to affect its safety or effectiveness.

www.fairchildsemi.com