

阅读申明

- 1.本站收集的数据手册和产品资料都来自互联网，版权归原作者所有。如读者和版权方有任何异议请及时告之，我们将妥善解决。
- 2.本站提供的中文数据手册是英文数据手册的中文翻译，其目的是协助用户阅读，该译文无法自动跟随原稿更新，同时也可能存在翻译上的不当。建议读者以英文原稿为参考以便获得更精准的信息。
- 3.本站提供的产品资料，来自厂商的技术支持或者使用者的心得体会等，其内容可能存在描述上的差异，建议读者做出适当判断。
- 4.如需与我们联系，请发邮件到marketing@iczoom.com，主题请标有“数据手册”字样。

Read Statement

1. The datasheets and other product information on the site are all from network reference or other public materials, and the copyright belongs to the original author and original published source. If readers and copyright owners have any objections, please contact us and we will deal with it in a timely manner.
2. The Chinese datasheets provided on the website is a Chinese translation of the English datasheets. Its purpose is for reader's learning exchange only and do not involve commercial purposes. The translation cannot be automatically updated with the original manuscript, and there may also be improper translations. Readers are advised to use the English manuscript as a reference for more accurate information.
3. All product information provided on the website refer to solutions from manufacturers' technical support or users the contents may have differences in description, and readers are advised to take the original article as the standard.
4. If you have any questions, please contact us at marketing@iczoom.com and mark the subject with "Datasheets" .



Characteristics

Parameter	Rating	Units
Output Voltage	20	V
Output Rise Time	5	ns
Output Fall Time	5	ns

Features

- CMOS Technology
- TTL/CMOS Compatible Inputs
- Low Switching Noise
- 5nS Typical True / Complement Output Skew
- 5nS Typical Output Rise and Fall Times
- Up to 20V Output Voltage
- Output High Voltage Programmable Via V_{OPT}
- Output Low Voltage Programmable Via V_{EE}

Applications

- Digital Control of Analog Circuits
- Level Shifting and Amplification
- Circuit Applications Requiring Complementary Signal Generation with Low Skew
- Bias Control for PIN Diode Drivers in a Microwave Switch

Description

The MX856 and MX857 are high speed, single-channel level shifters with complementary output drivers. The MX856 features a 5.0V V_{CC} positive supply, and the MX857 features a 3.3V V_{CC} positive supply.

The input buffers accept digital TTL or CMOS level signals, amplifies them to the V_{CC} and GND supply rails, and generates complementary outputs. The translator level shifts these output signals by amplifying them to the V_{CC} and V_{EE} supply rails.

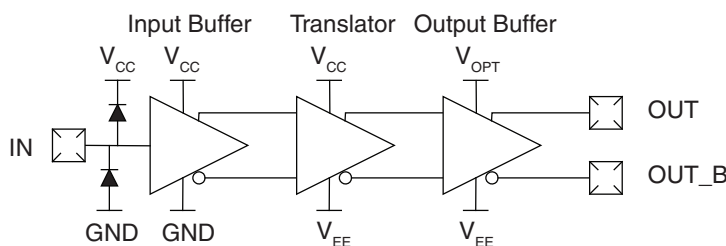
The output drivers then buffer the signals to V_{OPT} and V_{EE} . V_{OPT} may be set within the range of V_{CC} and GND. The output drivers also adjust the complementary signals for minimized skew error.

The MX856 and MX857 are designed to operate over a temperature range of -40°C to $+85^{\circ}\text{C}$, and are available in an 8-lead SOIC package.

Ordering Information

Part	Description
MX856B	8-Lead SOIC (100/Tube)
MX856BTR	8-Lead SOIC, Tape&Reel (1000/Reel)
MX857B	8-Lead SOIC (100/Tube)
MX857BTR	8-Lead SOIC, Tape&Reel (1000/Reel)

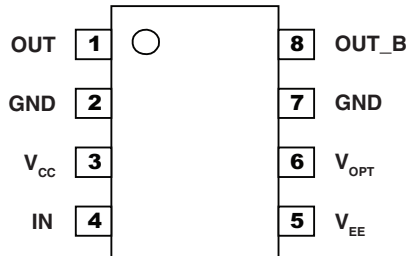
Functional Block Diagram



1. Specifications	3
1.1 Package Pinout	3
1.2 Pin Description	3
1.3 Absolute Maximum Ratings	3
1.4 MX856: Guaranteed Operating Range	4
1.5 MX857: Guaranteed Operating Range	4
1.6 DC Electrical Characteristics	4
1.7 ESD Warning	5
1.8 AC Electrical Characteristics	5
2. Manufacturing Information	6
2.1 Moisture Sensitivity	6
2.2 ESD Sensitivity	6
2.3 Reflow Profile	6
2.4 Mechanical Dimensions	7

1 Specifications

1.1 Package Pinout



1.2 Pin Description

Pin#	Name	Description
1	OUT	Output Driver
2	GND	Ground
3	V _{CC}	Positive Supply for Input Buffer
4	IN	Input Buffer
5	V _{EE}	Negative Supply for Output Driver
6	V _{OPT}	Positive Supply for Output Driver
7	GND	Ground
8	OUT_B	Complementary Output Driver

1.3 Absolute Maximum Ratings

Parameter	Symbol	Min	Max	Units
Positive DC Supply Voltage	V _{CC}	-0.4	6	V
Negative DC Supply Voltage	V _{EE}	-17	0.4	V
Output Positive DC Supply Voltage	V _{OPT}	-	6	V
Output Positive to Negative Supply Voltage	V _{OPT} -V _{EE}	-0.4	20	V
Positive to Negative Supply Voltage	V _{CC} -V _{EE}	-0.4	14	V
Positive to Output Supply Voltage	V _{CC} -V _{OPT}	-0.4	V _{CC} +0.4	V
DC Input Voltage	V _{IN}	-0.4	V _{CC} +0.4	V
DC Input Current	I _{IN}	-10	10	μA
Operating Temperature	T _A	-40	85	°C
Storage Temperature	T _{STG}	-65	150	°C
ESD Sensitivity (Human Body Model)	ESD	1.0	-	kV

Absolute maximum electrical ratings are at 25°C

Absolute maximum ratings are stress ratings. Stresses in excess of these ratings can cause permanent damage to the device. Functional operation of the device at conditions beyond those indicated in the operational sections of this data sheet is not implied.

1.4 MX856: Guaranteed Operating Range

Parameter	Symbol	Min	Max	Units
Positive DC Supply Voltage	V_{CC}	3	5.5	V
Negative DC Supply Voltage	V_{EE}	-15	-4.5	V
Output Positive DC Supply Voltage	V_{OPT}	0	5.5	V
Output Positive to Negative Supply Voltage	$V_{OPT}-V_{EE}$	7.5	20	V
Positive to Negative Supply Voltage	$V_{CC}-V_{EE}$	7.5	20	V
Positive to Output Supply Voltage	$V_{CC}-V_{OPT}$	0	V_{CC}	V
Operating Temperature	T_A	-40	85	°C
Input Rise and Fall Time	T_R, T_F	0	500	ns

1.5 MX857: Guaranteed Operating Range

Parameter	Symbol	Min	Max	Units
Positive DC Supply Voltage	V_{CC}	3	3.6	V
Negative DC Supply Voltage	V_{EE}	-17	-4.5	V
Output Positive DC Supply Voltage	V_{OPT}	0	3.6	V
Output Positive to Negative Supply Voltage	$V_{OPT}-V_{EE}$	7.5	20	V
Positive to Negative Supply Voltage	$V_{CC}-V_{EE}$	7.5	20	V
Positive to Output Supply Voltage	$V_{CC}-V_{OPT}$	0	V_{CC}	V
Operating Temperature	T_A	-40	85	°C
Input Rise and Fall Time	T_R, T_F	0	500	ns

1.6 DC Electrical Characteristics

Over guaranteed operating range.

Parameter	Conditions	Symbol	Min	Typ	Max	Units
Input High Voltage	-	V_{IH}	2	-	-	V
Input Low Voltage	-	V_{IL}	-	-	0.8	V
Output High Voltage ($I_{OH}=1mA$)	-	V_{OH}	$V_{OPT}-0.1$	-	-	V
Output Low Voltage ($I_{OL}=1mA$)	-	V_{OL}	-	-	$V_{EE}+0.1$	V
Input Current ($V_{IN}=0.0$ to V_{CC})	-	I_{IN}	-10	-	10	μA
Supply Current ($V_{IN}=0$ or V_{CC})	$V_{CC}=3.3V$	I_{CC}	-	<1	-	μA
	$V_{CC}=5V$		-	<1	-	
Supply Current ($V_{IN}=0$ or V_{CC})	$V_{CC}=3.3V$	I_{EE}	-	<1	-	
	$V_{CC}=5V$		-	<1	-	
Supply Current ($V_{IN}=0$ or V_{CC})	$V_{CC}=3.3V$	I_{OPT}	-	<1	-	
	$V_{CC}=5V$		-	<1	-	

1.7 ESD Warning

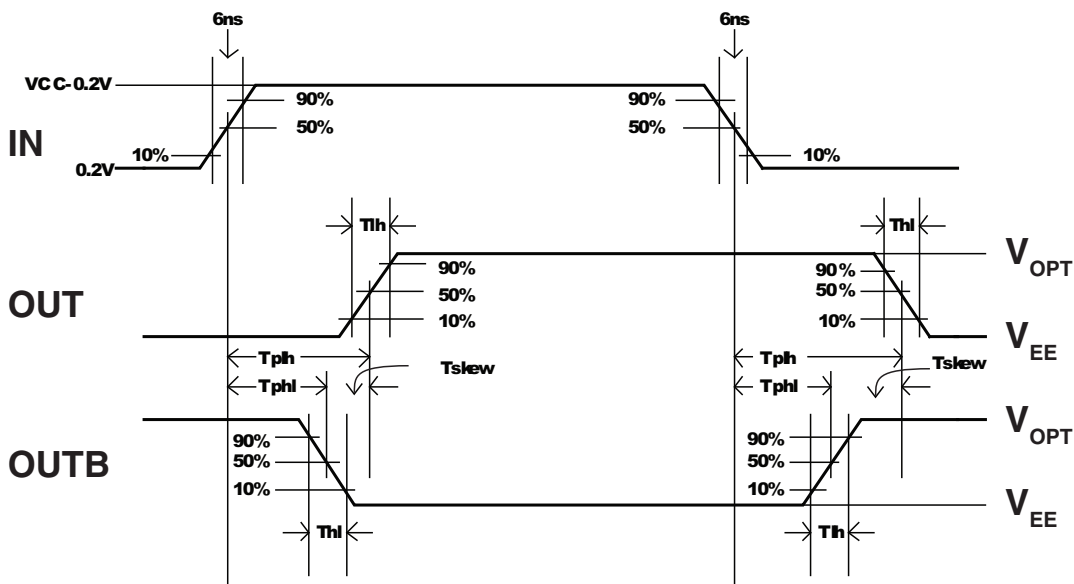
ESD (electrostatic discharge) sensitive device. Electrostatic charges can readily accumulate on test equipment and the human body in excess of 4000 Volts. This energy can discharge without detection. Although the MX856 / MX857 feature proprietary ESD

protection circuitry, permanent damage may be sustained if subjected to high energy electrostatic discharges. Proper ESD precautions are recommended to avoid performance degradation or loss of functionality.

1.8 AC Electrical Characteristics

$V_{CC}=V_{OPT}=3.3V$, $V_{EE}=-16.75V$ or $-4.5V$, input rise and fall times 6ns, $V_{IN}=3.1V$, $V_{IL}=0.2V$, $T_A=-40^{\circ}C$ to $+85^{\circ}C$
 $V_{CC}=V_{OPT}=5V$, $V_{EE}=-15V$ or $-4.5V$, input rise and fall times 6ns, $V_{IN}=4.8V$, $V_{IL}=0.2V$, $T_A=-40^{\circ}C$ to $+85^{\circ}C$

Parameter	Conditions	Symbol	Min	Typ	Max	Units
Propogation Delay (Low to High Input)	$V_{CC}=3.5V$	T_{PLH}	-	22	29	ns
	$V_{CC}=5.0V$		-	24	29	
Propogation Delay (High to Low Input)	$V_{CC}=3.5V$	T_{PHL}	-	20	29	
	$V_{CC}=5.0V$		-	20	29	
Output Rise Time ($C_{LD}=10pF$)	$V_{CC}=3.5V$	T_{TLH}	-	5	9	
	$V_{CC}=5.0V$		-	4	9	
Output Fall Time ($C_{LD}=10pF$)	$V_{CC}=3.5V$	T_{THL}	-	5	8	
	$V_{CC}=5.0V$		-	4	8	
Delay Skew (Output A to Output B)	$V_{CC}=3.5V$	T_{SKEW}	-	5	10	
	$V_{CC}=5.0V$		-	5	10	
Input Capacitance	-	C_{IN}	-	-	15	pF



2 Manufacturing Information

2.1 Moisture Sensitivity



All plastic encapsulated semiconductor packages are susceptible to moisture ingress. Clare classified all of its plastic encapsulated devices for moisture sensitivity according to the latest version of the joint industry standard, **IPC/JEDEC J-STD-020**, in force at the time of product evaluation. We test all of our products to the maximum conditions set forth in the standard, and guarantee proper operation of our devices when handled according to the limitations and information in that standard as well as to any limitations set forth in the information or standards referenced below.

Failure to adhere to the warnings or limitations as established by the listed specifications could result in reduced product performance, reduction of operable life, and/or reduction of overall reliability.

This product carries a **Moisture Sensitivity Level (MSL) rating** as shown below, and should be handled according to the requirements of the latest version of the joint industry standard **IPC/JEDEC J-STD-033**.

Device	Moisture Sensitivity Level (MSL) Rating
MX856B / MX857B	MSL 1

2.2 ESD Sensitivity



This product is **ESD Sensitive**, and should be handled according to the industry standard **JESD-625**.

2.3 Reflow Profile

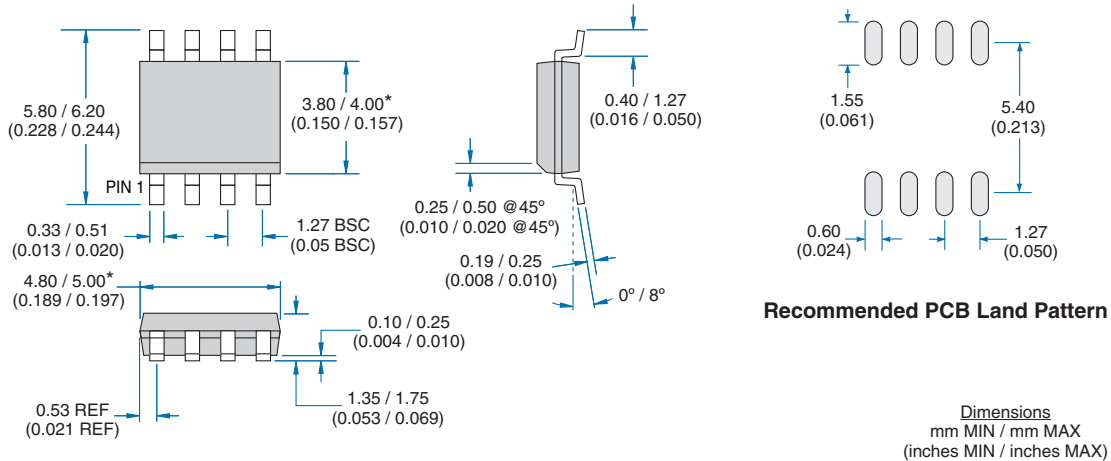
This product has a maximum body temperature and time rating as shown below. All other guidelines of **J-STD-020** must be observed.

Device	Maximum Temperature x Time
MX856B / MX857B	260°C for 30 seconds



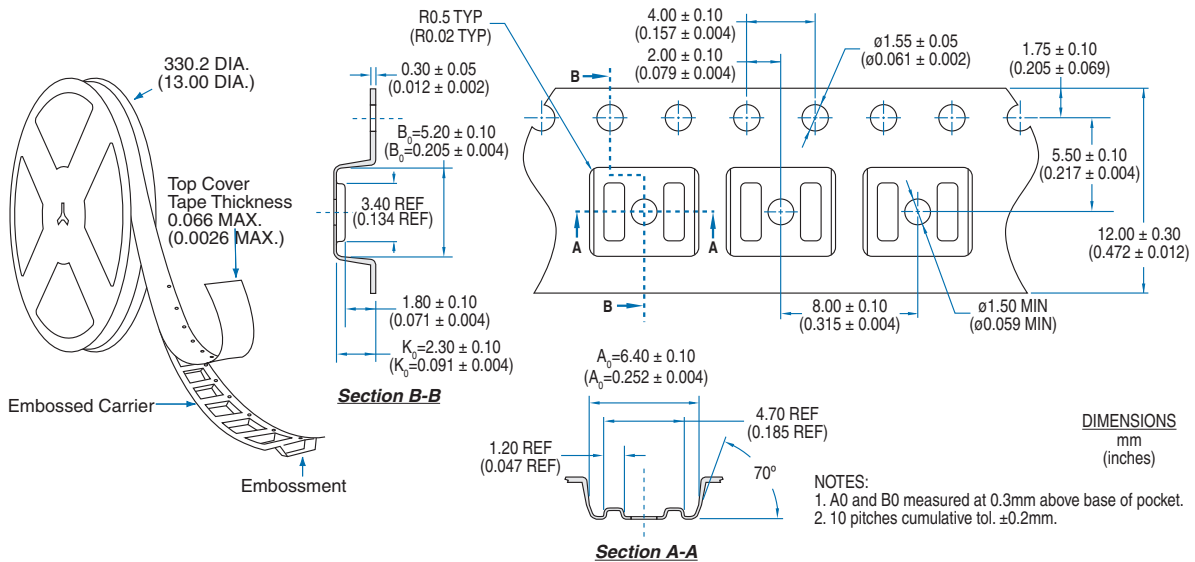
2.4 Mechanical Dimensions

2.4.1 8-Lead SOIC Package



- NOTES: (Unless otherwise specified)
1. Controlling dimensions: millimeters.
 2. Dimensions (*) do not include mold protrusions.
 3. Molded package shall conform to JEDEC standard configuration MS-012 variation AA.

2.4.2 Tape & Reel Dimensions



For additional information please visit our website at: www.clare.com

Clare, Inc. makes no representations or warranties with respect to the accuracy or completeness of the contents of this publication and reserves the right to make changes to specifications and product descriptions at any time without notice. Neither circuit patent licenses nor indemnity are expressed or implied. Except as set forth in Clare's Standard Terms and Conditions of Sale, Clare, Inc. assumes no liability whatsoever, and disclaims any express or implied warranty, relating to its products including, but not limited to, the implied warranty of merchantability, fitness for a particular purpose, or infringement of any intellectual property right.

The products described in this document are not designed, intended, authorized or warranted for use as components in systems intended for surgical implant into the body, or in other applications intended to support or sustain life, or where malfunction of Clare's product may result in direct physical harm, injury, or death to a person or severe property or environmental damage. Clare, Inc. reserves the right to discontinue or make changes to its products at any time without notice.

Specification: DS-MX856/MX857-20110729
©Copyright 2011, Clare, Inc.
All rights reserved. Printed in USA.
7/29/2011