

## 阅读申明

- 1.本站收集的数据手册和产品资料都来自互联网，版权归原作者所有。如读者和版权方有任何异议请及时告之，我们将妥善解决。
- 2.本站提供的中文数据手册是英文数据手册的中文翻译，其目的是协助用户阅读，该译文无法自动跟随原稿更新，同时也可能存在翻译上的不当。建议读者以英文原稿为参考以便获得更精准的信息。
- 3.本站提供的产品资料，来自厂商的技术支持或者使用者的心得体会等，其内容可能存在描述上的差异，建议读者做出适当判断。
- 4.如需与我们联系，请发邮件到marketing@iczoom.com，主题请标有“数据手册”字样。

## Read Statement

1. The datasheets and other product information on the site are all from network reference or other public materials, and the copyright belongs to the original author and original published source. If readers and copyright owners have any objections, please contact us and we will deal with it in a timely manner.
2. The Chinese datasheets provided on the website is a Chinese translation of the English datasheets. Its purpose is for reader's learning exchange only and do not involve commercial purposes. The translation cannot be automatically updated with the original manuscript, and there may also be improper translations. Readers are advised to use the English manuscript as a reference for more accurate information.
3. All product information provided on the website refer to solutions from manufacturers' technical support or users the contents may have differences in description, and readers are advised to take the original article as the standard.
4. If you have any questions, please contact us at marketing@iczoom.com and mark the subject with "Datasheets" .



**Discontinued**  
Last time buy: August 31, 2012



(Breakdown voltage 2,500V)

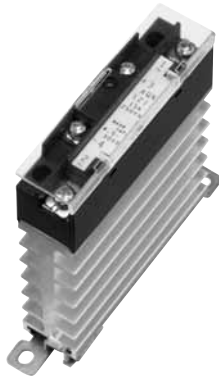


(Breakdown voltage 4,000V)

**Panasonic**  
ideas for life

**Slim profile SSR  
with heat sink mountable  
on DIN rail**

**AQ-K RELAYS**



RoHS compliant

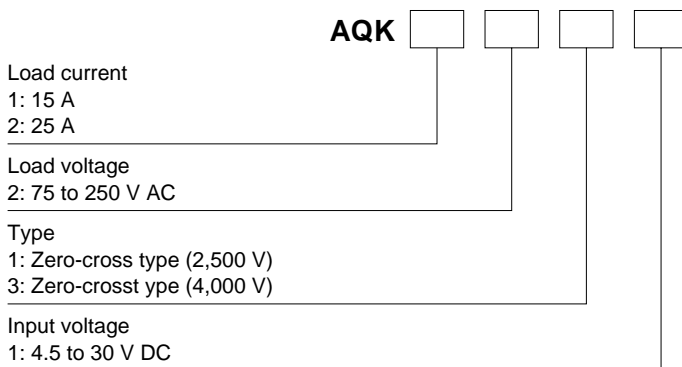
## FEATURES

- 1. Combined with heat sink for vertical profile**  
Helps to save space on control panel
- 2. Dielectric voltage of 2,500V or 4,000V**
- 3. Both screw-on installation or one-touch DIN-rail installation available**
- 4. Includes operation LED (red)**
- 5. Built-in varistor**

## APPLICATIONS

1. Molding machine (heater control)
2. Temperature controlled bath (heater control)
3. Printing machine (heater control)
4. Machine tool (motor control)

## ORDERING INFORMATION



## TYPES

Type	Load current	Load voltage	Input voltage	Breakdown voltage	Part No.
Zero-cross	15 A	75 to 250 V AC	4.5 to 30 V DC	2,500 V AC	AQK1211
			4.5 to 30 V DC	4,000 V AC	AQK1231
	25 A	75 to 250 V AC	4.5 to 30 V DC	2,500 V AC	AQK2211
			4.5 to 30 V DC	4,000 V AC	AQK2231

Standard packing: Carton 10 pcs., Case: 60 pcs.



## RATING

### 1. Ratings (Ambient temperature: 20°C 68°F, Input ripple: 1% or less)

#### 1) 10 A type

Item	Type	AQK1211	AQK1231	AQK2211	AQK2231	Remarks
Input side	Input voltage	4.5 to 30 V DC				*1
	Input current, max.	10 mA				
	Drop-out voltage, min.	1 V				
Load side	Max. load current	15 A*2		25 A*2		Ta = Max. 40°C 104°F
	Load voltage	75 to 250 V AC				
	Frequency	45 to 65 Hz				
	Non-repetitive surge current	150 A*3		250 A*3		In one cycle at 60 Hz
	Max. "OFF-state" leakage current	9 mA				at 60 Hz, 200 V AC
	Max. "ON-state" voltage drop	1.6 V				at max. carrying current
	Min. load current	100 mA*4				

Notes: \*1. Refer to REFERENCE DATA "3. Input current vs. input voltage".

\*2. Refer to REFERENCE DATA "1. Load current vs. ambient temperature".

\*3. Refer to REFERENCE DATA "2. Non-repetitive surge current vs. carrying time".

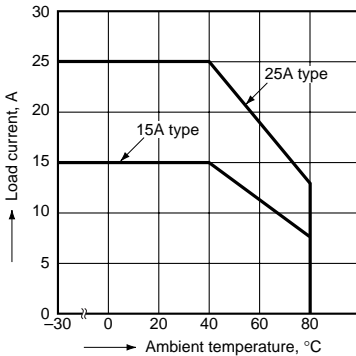
\*4. When the load current is less than the rated minimum load current, please refer to "Cautions for Use of SSR".

### 2. Characteristics (Ambient temperature: 20°C 68°F, Input ripple: 1% or less)

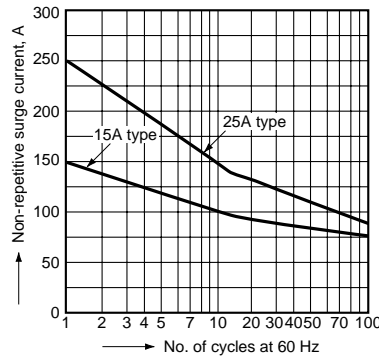
Item	Part No.	AQK1211	AQK1231	AQK2211	AQK2231	Remarks
Operate time, max.		1/2 cycle of voltage sine wave + 1 ms				
Release time, max.		1/2 cycle of voltage sine wave + 1 ms				
Breakdown voltage		2,500 V AC	4,000 V AC	2,500 V AC	4,000 V AC	
Insulation resistance, min., Initial		100 MΩ between input, output and case				at 500V DC
Vibration resistance		10 to 55 Hz at double amplitude of 0.75 mm				1 hour for X, Y, Z axes
Shock resistance		Min. 294 m/s <sup>2</sup>				10 minutes for X, Y, Z axes
Ambient temperature		-30°C to +80°C -22°F to +176°F				Non-condensing at low temperatures
Storage temperature		-35°C to +100°C -31°F to +212°F				
Operational method		Zero-cross (Turn-ON and Turn-OFF)				

## REFERENCE DATA

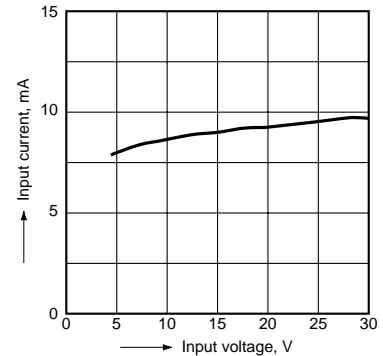
#### 1. Load current vs. ambient temperature characteristics



#### 2. Non-repetitive surge current vs. carrying time characteristics (15 A, 25 A type)

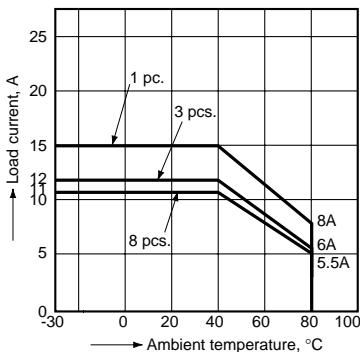


#### 3. Input current vs. input voltage characteristics



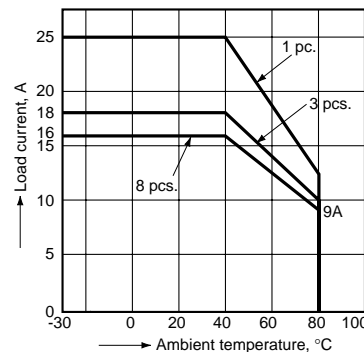
#### 4-(1) Load current when contact mounted vs. ambient temperature characteristics

Tested sample: AQK1211, AQK1231



#### 4-(2) Load current when contact mounted vs. ambient temperature characteristics

Tested sample: AQK2211, AQK2231





**Discontinued**  
Last time buy: August 31, 2012

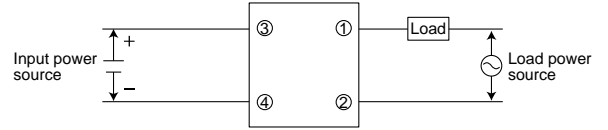
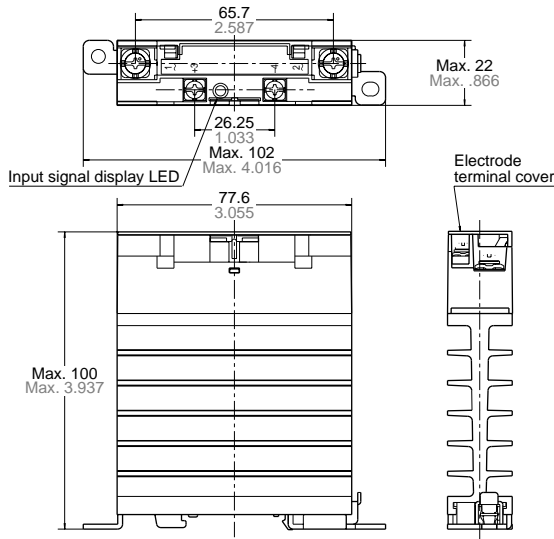
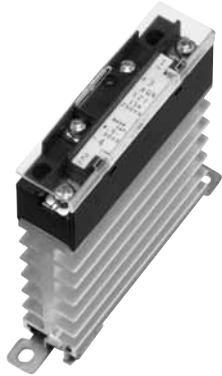
**DIMENSIONS** (mm inch)

The CAD data of the products with a **CAD Data** mark can be downloaded from: <http://industrial.panasonic.com/ac/e>

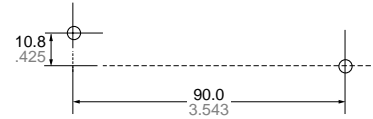
**CAD Data**

External dimensions

Schematic



Mounting dimensions (Bottom view)  
35-mm DIN rail installation, or 2-4.6/M4 dia. Screws



**Recommended Temperature Controllers**

**<KT4H Temperature Controller>**

Our temperature controller is recommended for use with our Solid State Relays.

**Features**

- Space saving requiring only a depth of 65 mm
- Data collection possible through a PLC using RS485 communication
- Tool port is standard for easy data setting
- Inverted LCD + backlight for good legibility with large characters
- Excellent operability and rich optional control functions

**Substitute part numbers**

Power supply	Control output	Part No.
100 to 240 V AC	Relay contact output	AKT4H111100

\* For detailed product information about temperature controllers, please refer to our website:  
<http://panasonic-electric-works.net/ac>

