

## 阅读申明

- 1.本站收集的数据手册和产品资料都来自互联网，版权归原作者所有。如读者和版权方有任何异议请及时告之，我们将妥善解决。
- 2.本站提供的中文数据手册是英文数据手册的中文翻译，其目的是协助用户阅读，该译文无法自动跟随原稿更新，同时也可能存在翻译上的不当。建议读者以英文原稿为参考以便获得更精准的信息。
- 3.本站提供的产品资料，来自厂商的技术支持或者使用者的心得体会等，其内容可能存在描述上的差异，建议读者做出适当判断。
- 4.如需与我们联系，请发邮件到marketing@iczoom.com，主题请标有“数据手册”字样。

## Read Statement

1. The datasheets and other product information on the site are all from network reference or other public materials, and the copyright belongs to the original author and original published source. If readers and copyright owners have any objections, please contact us and we will deal with it in a timely manner.
2. The Chinese datasheets provided on the website is a Chinese translation of the English datasheets. Its purpose is for reader's learning exchange only and do not involve commercial purposes. The translation cannot be automatically updated with the original manuscript, and there may also be improper translations. Readers are advised to use the English manuscript as a reference for more accurate information.
3. All product information provided on the website refer to solutions from manufacturers' technical support or users the contents may have differences in description, and readers are advised to take the original article as the standard.
4. If you have any questions, please contact us at marketing@iczoom.com and mark the subject with "Datasheets" .

## Chip Type Specialty Polymer Aluminum Electrolytic Capacitors (SP Cap)

Japan

Series: **CB**

### ■ Features

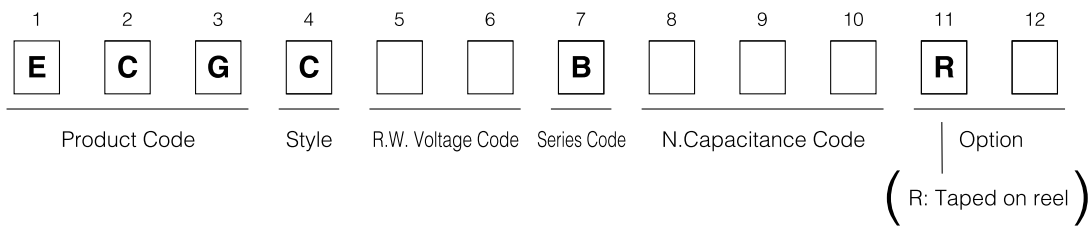
- Low impedance at high frequency (10 kHz to 10 MHz) as low as ceramic capacitors (Reduced ESR due to an applying speciality polymer with high conductivity.)
- Excellent Noise-absorbent Characteristics
- Surface Mount (Reflow soldering method available)
- Very stable capacitance, impedance and ESR against temperature
- Excellent endurance characteristics due to adoption of solid electrolyte
- 4-terminal-construction helps further low impedance.

### ■ Specifications

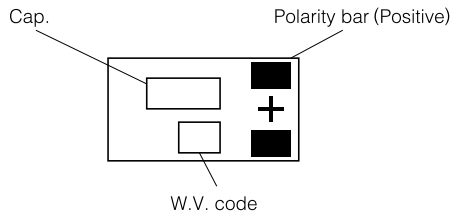
Operating Temp. Range	-40 to +105 °C							
Rated W.V. Range	4 to 16 V.DC							
Nominal Cap. Range	2.2 to 82 μF							
Capacitance Tolerance	±20 % (120 Hz/+20 °C)							
DC Leakage Current	I ≤ 0.04 CV or 3 (μA) after 2 minutes (Whichever is the greater) (4W.V.:0.06CV)							
Dissipation Factor	≤ 0.06 (120 Hz/+20°C)							
Surge Voltage	Rated Working Voltage × 1.25 (15 to 35 °C)							
Endurance	<p>After applying rated working voltage for 1000 hours at +105 °C, and then being stabilized at +20 °C, capacitor shall meet the following limits.</p> <table border="1"> <tbody> <tr> <td>Capacitance change</td> <td>±10 % of initial measured value</td> </tr> <tr> <td>D.F.</td> <td>≤ Initial specified value</td> </tr> <tr> <td>DC leakage current</td> <td>≤ Initial specified value</td> </tr> </tbody> </table>		Capacitance change	±10 % of initial measured value	D.F.	≤ Initial specified value	DC leakage current	≤ Initial specified value
Capacitance change	±10 % of initial measured value							
D.F.	≤ Initial specified value							
DC leakage current	≤ Initial specified value							
Moisture Resistance	<p>After storing for 500 hours at +60 °C, 90 % R.H.</p> <table border="1"> <tbody> <tr> <td>Capacitance change</td> <td>+40 %, -20 % of initial measured value (4W.V.:+60 %, -20 % 6.3W.V.:+50 %, -20 %)</td> </tr> <tr> <td>D.F.</td> <td>≤ Initial specified value (4W.V., ECGC□□B□□□RA: ≤ 200 % of Initial specified value)</td> </tr> <tr> <td>DC leakage current</td> <td>≤ Initial specified value</td> </tr> </tbody> </table>		Capacitance change	+40 %, -20 % of initial measured value (4W.V.:+60 %, -20 % 6.3W.V.:+50 %, -20 %)	D.F.	≤ Initial specified value (4W.V., ECGC□□B□□□RA: ≤ 200 % of Initial specified value)	DC leakage current	≤ Initial specified value
Capacitance change	+40 %, -20 % of initial measured value (4W.V.:+60 %, -20 % 6.3W.V.:+50 %, -20 %)							
D.F.	≤ Initial specified value (4W.V., ECGC□□B□□□RA: ≤ 200 % of Initial specified value)							
DC leakage current	≤ Initial specified value							
Permissible Current Between Terminals with Same Polarity	2 A DC max. (This shall be applicable only when each terminal is landed or the circuit individually).							

Design, Specifications are subject to change without notice. Ask factory for technical specifications before purchase and/or use. Whenever a doubt about safety arises from this product, please inform us immediately for technical consultation without fail.

### ■ Explanation of Part Numbers

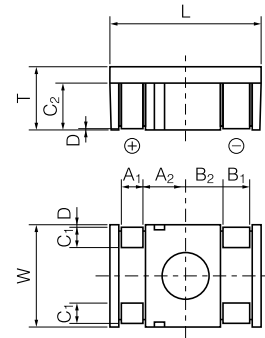


### ■ Marking



(V)	4	6.3	8	12.5	16
(W.V. code)	g	j	k	B	C

### ■ Dimensions in mm (not to scale)



Size code	L ±0.2	W ±0.1	T ±0.1	A <sub>1</sub> ±0.1	A <sub>2</sub> ±0.1
	7.9	5.3	3.3	1.2	2.2
Size code	B <sub>1</sub> ±0.1	B <sub>2</sub> ±0.1	C <sub>1</sub> ±0.2	C <sub>2</sub> ±0.1	D ±0.1
	1.5	1.9	1.2	2.4	0

### ■ Standard product

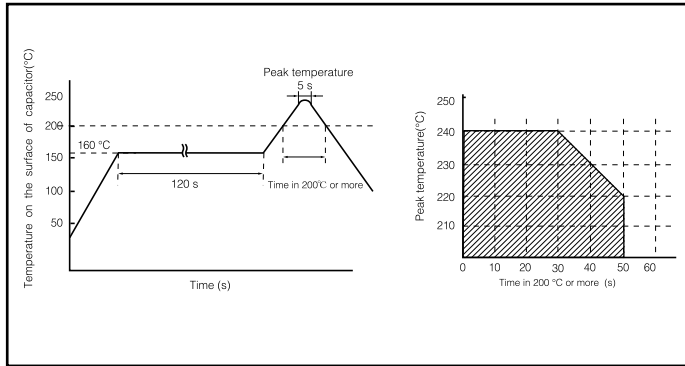
Rated W.V. (V.DC)	Capacitance (μF)	Part number	Impedance (Ω) (400 kHz/+20 °C)	Ripple current (A r.m.s.) (100 kHz/ +20 ~ +105 °C)
4(0G)	15 (150)	ECGC0GB150R	0.11	1.3
	33 (330)	ECGC0GB330R	0.06	1.6
	47 (470)	ECGC0GB470R	0.05	1.6
	68 (680)	ECGC0GB680R	0.04	1.6
	82 (820)	ECGC0GB820RA	0.04	1.6
6.3 (0J)	10 (100)	ECGC0JB100R	0.13	1
	22 (220)	ECGC0JB220R	0.09	1.3
	33 (330)	ECGC0JB330R	0.06	1.6
	47 (470)	ECGC0JB470R	0.05	1.6
	68 (680)	ECGC0JB680RA	0.04	1.6
8 (0K)	8.2 (8R2)	ECGC0KB8R2R	0.14	1
	15 (150)	ECGC0KB150R	0.11	1.3
	22 (220)	EEFCD0K220R	0.09	1.6
	33 (330)	ECGC0KB330R	0.06	1.6
	47 (470)	ECGC0KB470RA	0.05	1.6
12.5 (1B)	4.7 (4R7)	ECGC1BB4R7R	0.18	1
	10 (100)	ECGC1BB100R	0.13	1
	15 (150)	ECGC1BB150R	0.11	1.3
	22 (220)	ECGC1BB220R	0.09	1.6
	33 (330)	EEFCD1B330RA	0.06	1.6
16 (1C)	2.2 (2R2)	ECGC1CB2R2R	0.38	1
	4.7 (4R7)	ECGC1CB4R7R	0.18	1
	6.8 (6R8)	ECGC1CB6R8R	0.15	1
	10 (100)	ECGC1CB100R	0.13	1

( ) shows W.V. and capacitance code.

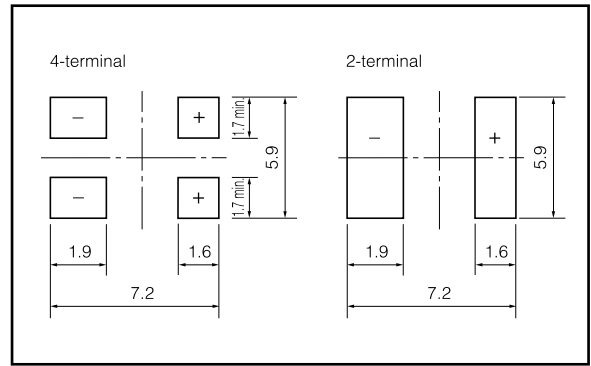
Design, Specifications are subject to change without notice. Ask factory for technical specifications before purchase and/or use. Whenever a doubt about safety arises from this product, please inform us immediately for technical consultation without fail.

### ■ Mounting Specifications.

- Recommendable reflow soldering temperature

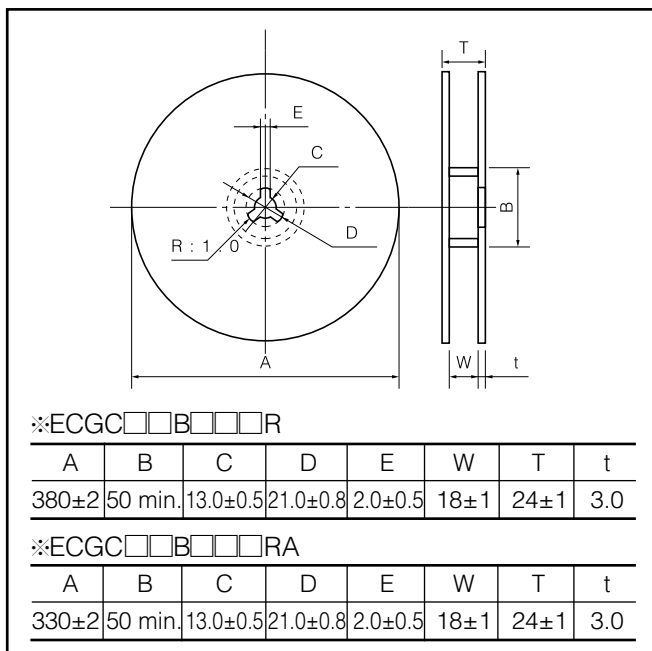


- Typical land pattern (mm)

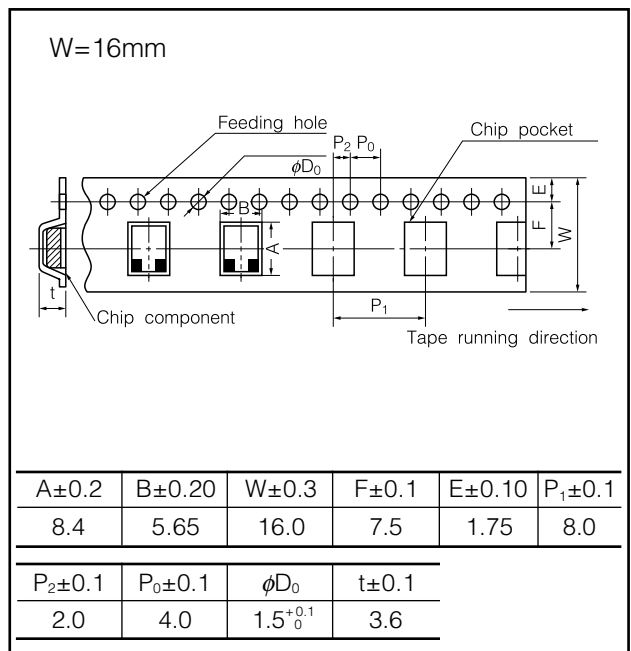


### ■ Packaging Specifications

- Reel Dimensions (mm)



- Embossed Taping (mm)



### ■ Packaging Quantity

※ECGC□□B□□□R

Embossed taping

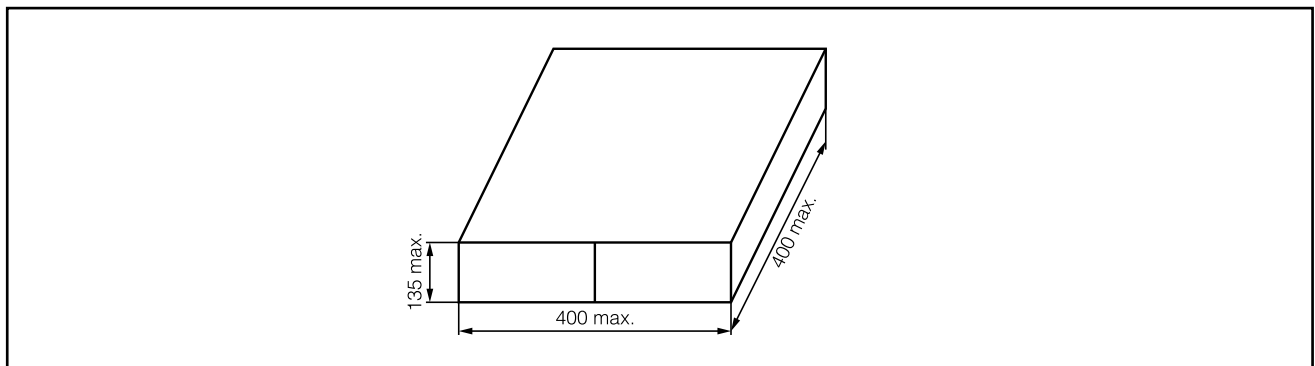
3000 pcs./reel, 15000 pcs./box

※ECGC□□B□□□RA

Embossed taping

2200 pcs./reel, 11000 pcs./box

### ■ Packaging Box Dimensions (mm)



Design, Specifications are subject to change without notice. Ask factory for technical specifications before purchase and/or use. Whenever a doubt about safety arises from this product, please inform us immediately for technical consultation without fail.

## MEMO