

## 阅读申明

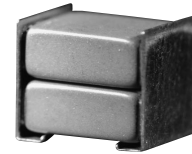
- 1.本站收集的数据手册和产品资料都来自互联网，版权归原作者所有。如读者和版权方有任何异议请及时告之，我们将妥善解决。
- 2.本站提供的中文数据手册是英文数据手册的中文翻译，其目的是协助用户阅读，该译文无法自动跟随原稿更新，同时也可能存在翻译上的不当。建议读者以英文原稿为参考以便获得更精准的信息。
- 3.本站提供的产品资料，来自厂商的技术支持或者使用者的心得体会等，其内容可能存在描述上的差异，建议读者做出适当判断。
- 4.如需与我们联系，请发邮件到marketing@iczoom.com，主题请标有“数据手册”字样。

## Read Statement

1. The datasheets and other product information on the site are all from network reference or other public materials, and the copyright belongs to the original author and original published source. If readers and copyright owners have any objections, please contact us and we will deal with it in a timely manner.
2. The Chinese datasheets provided on the website is a Chinese translation of the English datasheets. Its purpose is for reader's learning exchange only and do not involve commercial purposes. The translation cannot be automatically updated with the original manuscript, and there may also be improper translations. Readers are advised to use the English manuscript as a reference for more accurate information.
3. All product information provided on the website refer to solutions from manufacturers' technical support or users the contents may have differences in description, and readers are advised to take the original article as the standard.
4. If you have any questions, please contact us at marketing@iczoom.com and mark the subject with "Datasheets" .

New!

**NTJ Series**



## ◆FEATURES

1. Small size and large capacitance, high ripple current.
2. Temperature cycle: 1,000 cycles.
3. X7R temperature characteristics.
4. Excellent noise absorption.
5. For reflow soldering use.
6. Suitable for aluminum substrate.

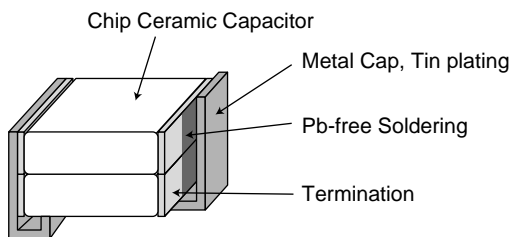
## ◆APPLICATIONS

1. Smoothing circuit of switching mode AC-DC or DC-DC converter.
2. On-board power supply.
3. Noise suppressor for various kinds of equipments.

## ◆CUSTOM MADE PRODUCTS

We can offer custom made one element metal cap type capacitors for request of customers. Please contact us if you have questions for details.

## ◆CONSTRUCTION



## ◆RATINGS

1. Category Temperature Range	-55~+125°C
2. Rated Voltage Range	25, 50, 100, 250V <sub>dc</sub>
3. Rated Capacitance Range	1.5 to 47μF
4. Rated Capacitance Tolerance	M(±20%)
5. Temperature Characteristics	X7R
6. Rated Ripple Current	See No.5 on the following table

## ◆SPECIFICATIONS

No.	Items	Specification	Test Condition												
1	Withstand Voltage	No abnormality.	250% of rated voltage shall be applied for 5 seconds. (Only 250V <sub>dc</sub> products : 475V)												
2	Insulation Resistance	100/C <sub>R</sub> (MΩ) or 4000(MΩ) whichever is less.	Rated voltage shall be applied for 60±5 seconds at temperature 25±2°C.												
3	Rated Capacitance	Within specified tolerance.	<table border="1"> <tr> <td></td> <td>C<sub>R</sub>≤10μF</td> <td>C<sub>R</sub>&gt;10μF</td> </tr> <tr> <td>Temperature</td> <td colspan="2">25±2°C</td> </tr> <tr> <td>Frequency</td> <td>1±0.1kHz</td> <td>120±12Hz</td> </tr> <tr> <td>Voltage</td> <td>1±0.2V<sub>rms</sub></td> <td>0.5±0.2V<sub>rms</sub></td> </tr> </table>		C <sub>R</sub> ≤10μF	C <sub>R</sub> >10μF	Temperature	25±2°C		Frequency	1±0.1kHz	120±12Hz	Voltage	1±0.2V <sub>rms</sub>	0.5±0.2V <sub>rms</sub>
	C <sub>R</sub> ≤10μF	C <sub>R</sub> >10μF													
Temperature	25±2°C														
Frequency	1±0.1kHz	120±12Hz													
Voltage	1±0.2V <sub>rms</sub>	0.5±0.2V <sub>rms</sub>													
4	Dissipation Factor	5.0% maximum													
5	Rated Ripple Current	<table border="1"> <tr> <td>Size</td> <td>55</td> </tr> <tr> <td>Arms</td> <td>3.0</td> </tr> </table>	Size	55	Arms	3.0	10kHz~1MHz (sine curve) Ripple voltage V <sub>p</sub> shall be less than the rated voltage.								
Size	55														
Arms	3.0														

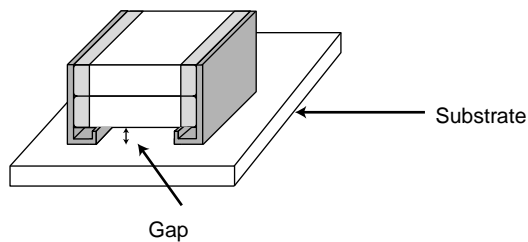
## ◆SPECIFICATIONS

No.	Items	Specification	Test Condition															
6	Temperature Cycle	Appearance : No visible damage. $\Delta C/C : \pm 15\%$ D.F. : To meet the initial specification. I.R. : To meet the initial specification.	<table border="1"> <thead> <tr> <th>Step</th> <th>Temperature (°C)</th> <th>(min.)</th> </tr> </thead> <tbody> <tr> <td>1</td> <td>Min. Category temperature <math>\pm 3</math></td> <td>30<math>\pm</math>3</td> </tr> <tr> <td>2</td> <td>Room temperature</td> <td>3 max.</td> </tr> <tr> <td>3</td> <td>Max. Category temperature <math>\pm 3</math></td> <td>30<math>\pm</math>3</td> </tr> <tr> <td>4</td> <td>Room temperature</td> <td>3 max.</td> </tr> </tbody> </table> <p>&lt;Cycle&gt; 1000 cycles</p>	Step	Temperature (°C)	(min.)	1	Min. Category temperature $\pm 3$	30 $\pm$ 3	2	Room temperature	3 max.	3	Max. Category temperature $\pm 3$	30 $\pm$ 3	4	Room temperature	3 max.
Step	Temperature (°C)	(min.)																
1	Min. Category temperature $\pm 3$	30 $\pm$ 3																
2	Room temperature	3 max.																
3	Max. Category temperature $\pm 3$	30 $\pm$ 3																
4	Room temperature	3 max.																
7	Humidity Load Life	Appearance : No abnormality. $\Delta C/C : \pm 20\%$ D.F. : 10% max. I.R. : 25/C <sub>R</sub> (M $\Omega$ ) or 1000(M $\Omega$ ) whichever is less.	Temperature : 40 $\pm$ 2°C Humidity : 90 to 95%RH Voltage : Rated voltage Time : 500 $\pm$ <sub>0</sub> <sup>24</sup> hours															
8	Endurance	Appearance : No abnormality. $\Delta C/C : \pm 20\%$ D.F. : 10% max. I.R. : 50/C <sub>R</sub> (M $\Omega$ ) or 1000(M $\Omega$ ) whichever is less.	Temperature : 125 $\pm$ 3°C Voltage : Rated voltage Time : 1000 $\pm$ <sub>0</sub> <sup>48</sup> hours															

\*C<sub>R</sub> : Rated Capacitance( $\mu$ F)

## ◆Note of mountig for NTJ series.

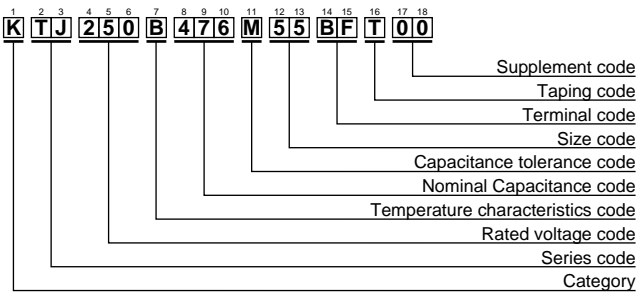
1. The gap of capacitor and a substrate shall be the mounting face.
2. To prevent degradation of temperature cycling capability, if need to be careful about amount of solder that would not go into the inner side of terminations.



## ◆STANDARD RATINGS

Rated voltage (Vdc)	Rated Capacitance ( $\mu$ F)	Dimensions(mm)				Maximum ripple current (Arms)	Part Number
		L	W	Tmax.	a		
25	33	6.0 $\pm$ 0.4	5.3 $\pm$ 0.4	5.5	1.3 $\pm$ 0.3	3.0	KTJ250B336M55BFT00
	47						KTJ250B476M55BFT00
50	15	6.0 $\pm$ 0.4	5.3 $\pm$ 0.4	5.5	1.3 $\pm$ 0.3	3.0	KTJ500B156M55BFT00
	22						KTJ500B226M55BFT00
100	6.8	6.0 $\pm$ 0.4	5.3 $\pm$ 0.4	5.5	1.3 $\pm$ 0.3	3.0	KTJ101B685M55BFT00
	10						KTJ101B106M55BFT00
250	1.5	6.0 $\pm$ 0.4	5.3 $\pm$ 0.4	5.5	1.3 $\pm$ 0.3	3.0	KTJ251B155M55BFT00
	2.2						KTJ251B225M55BFT00

## ◆PART NUMBERING SYSTEM



## ◆DIMENSIONS

