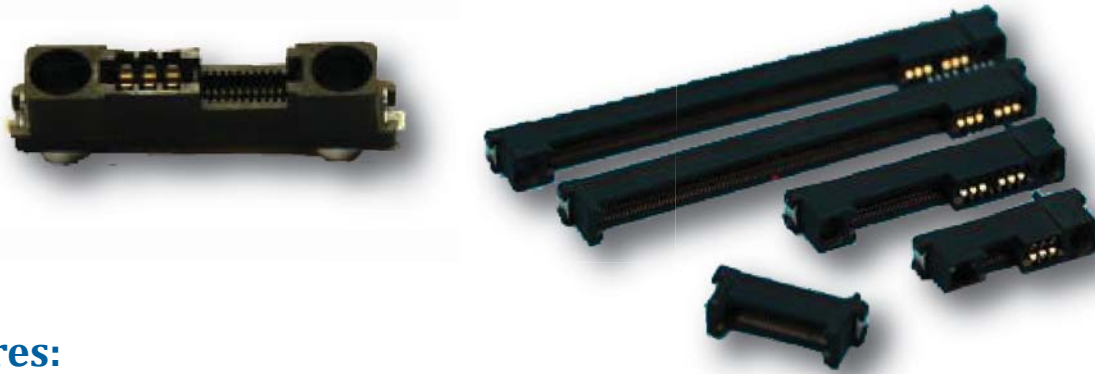


## 阅读申明

- 1.本站收集的数据手册和产品资料都来自互联网，版权归原作者所有。如读者和版权方有任何异议请及时告之，我们将妥善解决。
- 2.本站提供的中文数据手册是英文数据手册的中文翻译，其目的是协助用户阅读，该译文无法自动跟随原稿更新，同时也可能存在翻译上的不当。建议读者以英文原稿为参考以便获得更精准的信息。
- 3.本站提供的产品资料，来自厂商的技术支持或者使用者的心得体会等，其内容可能存在描述上的差异，建议读者做出适当判断。
- 4.如需与我们联系，请发邮件到marketing@iczoom.com，主题请标有“数据手册”字样。

## Read Statement

1. The datasheets and other product information on the site are all from network reference or other public materials, and the copyright belongs to the original author and original published source. If readers and copyright owners have any objections, please contact us and we will deal with it in a timely manner.
2. The Chinese datasheets provided on the website is a Chinese translation of the English datasheets. Its purpose is for reader's learning exchange only and do not involve commercial purposes. The translation cannot be automatically updated with the original manuscript, and there may also be improper translations. Readers are advised to use the English manuscript as a reference for more accurate information.
3. All product information provided on the website refer to solutions from manufacturers' technical support or users the contents may have differences in description, and readers are advised to take the original article as the standard.
4. If you have any questions, please contact us at marketing@iczoom.com and mark the subject with "Datasheets" .



### Features:

- Supports data speed from 6Gbps to 25Gbps per differential pair
- Provides 20 - 200 signal pin options for 66 differential pairs.
- Supports 85 ohm/92 ohm/100 ohm platforms.
- Vertical and Co-planar Card-Edge options.
- Provides 1.6mm and 2.36mm card gauge.
- TH power and SMT signal termination.
- Supports SAS, SATA PCIe(Gen3/4), XAUI and more.
- Cost benefit interconnect solution replacing pairs of male and female connectors.



### Overview:

A 0.8 Pitch High-speed Signal and Power Hybrid Card-Edge Connector. The Cool Edge can provide tailor made solutions (carries 25Gbps Ethernet and 16Gbps PCIe, and single and signal altogether). With modular base tooling, the connector can be all power, all signal, or hybrid. The Cool Edge has balanced Signal Integrity Characteristics, such as a very low loss and cross-talk for LVDS at data rate 25-28Gbps or upto 56Gbps (PAM4).

### Applications:

#### Datacom:

- Server
- Storage
- High-end computing

#### Networking:

- Switch
- Router

#### Telecom:

- 3G
- LTE network

#### Datacenter.

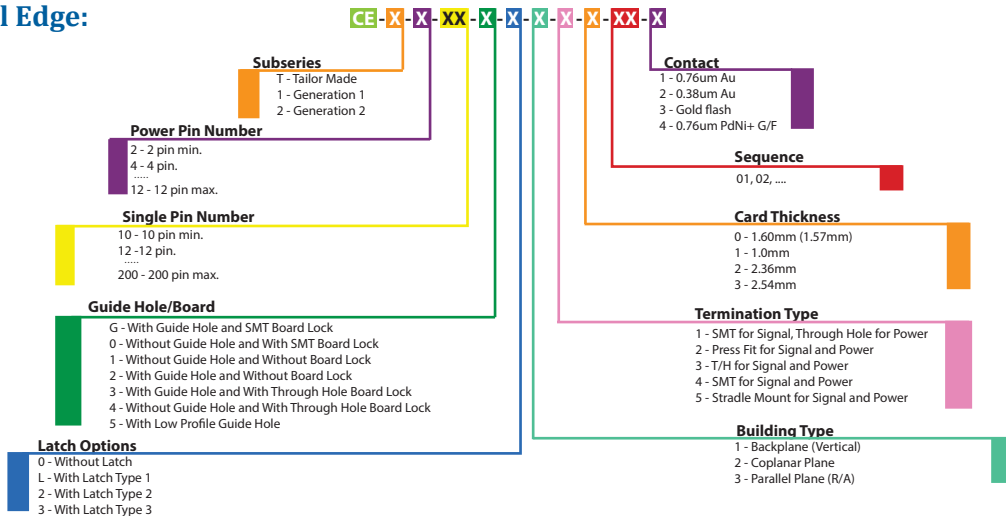


## Technical Characteristics:

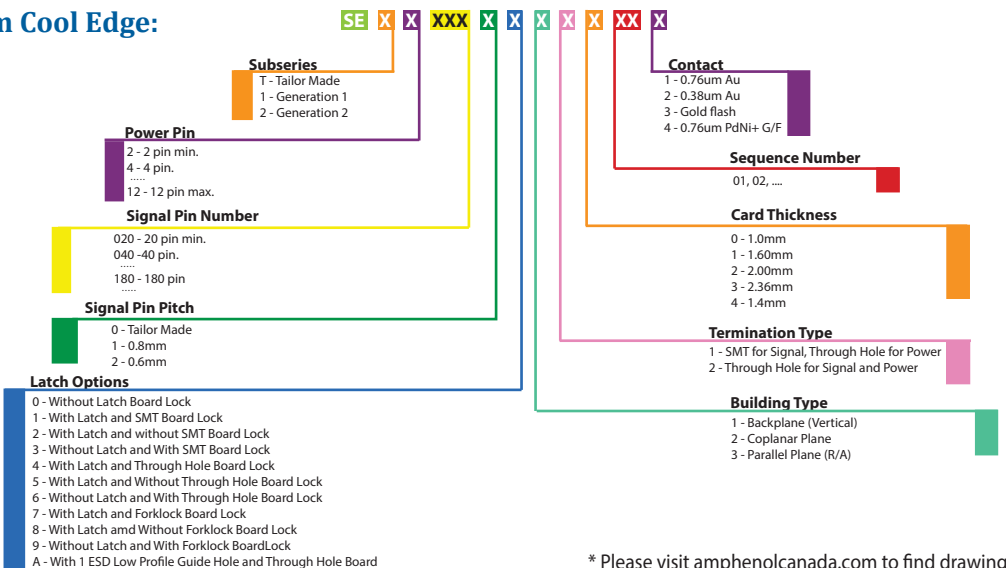
Material	
Housing	High temperature Thermoplastic black UL94 - V0
Contact	Copper Alloy
Latch	High Temperature Thermoplastic Black UL 94 - V0
Board Locks	<ul style="list-style-type: none"> <li>Copper Alloy</li> <li>SPCC</li> </ul>
Pickup Cap	Stainless steel
Mechanical	
Mating Force	25N max.
Unmating Force	5N min.
Electrical	
Current Rating for Power Pin	20A - 25A/Pin
Current Rating for Signal Pin	0.5A - 1.2A/Pin
Plating	
Contact	Copper Alloy, Nickel Underplated, Selective Gold on Mating Area
Board Lock	1.27 min. matte tin over 127 - 2.54 Um Nickel Underplated

## Ordering Information:

### Cool Edge:



### Slim Cool Edge:



\* Please visit [amphenolcanada.com](http://amphenolcanada.com) to find drawings for other products in this series.