

阅读申明

- 1.本站收集的数据手册和产品资料都来自互联网，版权归原作者所有。如读者和版权方有任何异议请及时告之，我们将妥善解决。
- 2.本站提供的中文数据手册是英文数据手册的中文翻译，其目的是协助用户阅读，该译文无法自动跟随原稿更新，同时也可能存在翻译上的不当。建议读者以英文原稿为参考以便获得更精准的信息。
- 3.本站提供的产品资料，来自厂商的技术支持或者使用者的心得体会等，其内容可能存在描述上的差异，建议读者做出适当判断。
- 4.如需与我们联系，请发邮件到marketing@iczoom.com，主题请标有“数据手册”字样。

Read Statement

1. The datasheets and other product information on the site are all from network reference or other public materials, and the copyright belongs to the original author and original published source. If readers and copyright owners have any objections, please contact us and we will deal with it in a timely manner.
2. The Chinese datasheets provided on the website is a Chinese translation of the English datasheets. Its purpose is for reader's learning exchange only and do not involve commercial purposes. The translation cannot be automatically updated with the original manuscript, and there may also be improper translations. Readers are advised to use the English manuscript as a reference for more accurate information.
3. All product information provided on the website refer to solutions from manufacturers' technical support or users the contents may have differences in description, and readers are advised to take the original article as the standard.
4. If you have any questions, please contact us at marketing@iczoom.com and mark the subject with "Datasheets" .

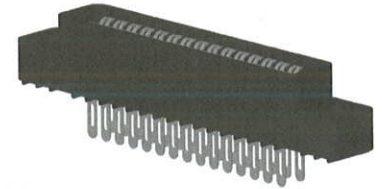
Female Card Edge

.100" [2.54 mm] Contact Centers, .431" [10.95 mm] Insulator Height
Dip Solder/Eyelet/Right Angle for .062" [1.57] or .031" [0.79] Mating PCB

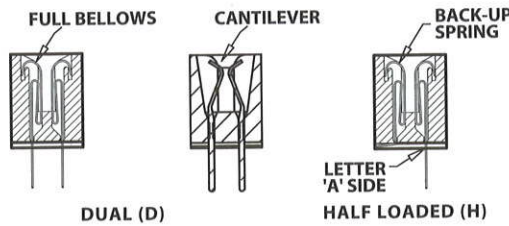
Sullins Female Card Edge

SPECIFICATIONS

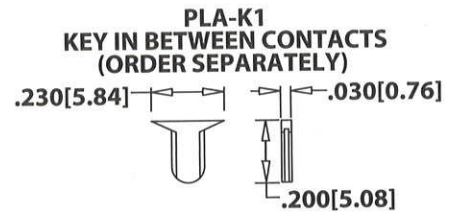
- Accommodates .062" ± .008" [1.57 ± .20] PC board
- PBT, PPS, PA9T or PEEK insulator
- Molded-in key available
- 3 amp current rating
- 30 milli ohm maximum at rated current
- UL Flammability Rating: 94V-0



READOUT



POLARIZING KEYS (For .062" Mating PCB Only)

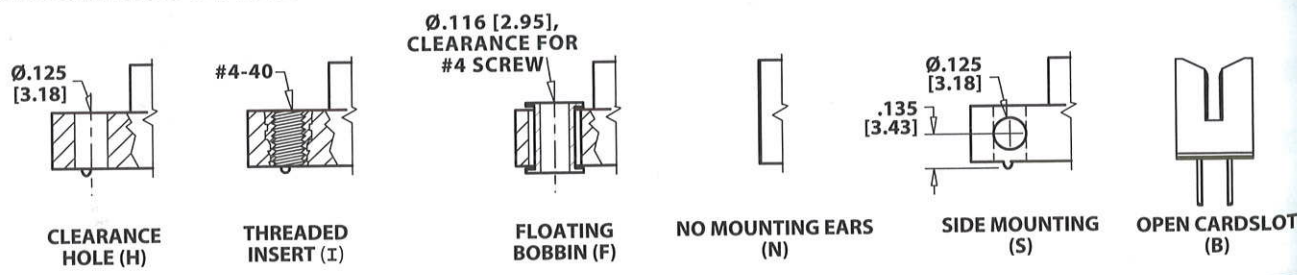


CONSULT FACTORY FOR MOLDED-IN KEY

TERMINATION TYPE

FULL BELLOW	TAIL LENGTH	ROW SPACING	MIN HOLE SIZE	CANTILEVER											
	RIGHT ANGLE														
	.125 [3.18] (RA)	.156 [3.96]	Ø.043 [1.09]		<table border="1"> <thead> <tr> <th>TAIL LENGTH</th> <th>ROW SPACING</th> <th>MIN HOLE SIZE</th> </tr> </thead> <tbody> <tr> <td>.200 [5.08] (ET)</td> <td>.140 [3.56]</td> <td>Ø.040 [1.02]</td> </tr> <tr> <td>.440 [11.15] (EY)</td> <td>.140 [3.56]</td> <td>Ø.040 [1.02]</td> </tr> </tbody> </table>	TAIL LENGTH	ROW SPACING	MIN HOLE SIZE	.200 [5.08] (ET)	.140 [3.56]	Ø.040 [1.02]	.440 [11.15] (EY)	.140 [3.56]	Ø.040 [1.02]	
TAIL LENGTH	ROW SPACING	MIN HOLE SIZE													
.200 [5.08] (ET)	.140 [3.56]	Ø.040 [1.02]													
.440 [11.15] (EY)	.140 [3.56]	Ø.040 [1.02]													
	STRAIGHT														
	.200 [5.08] (RT)	.140 [3.56]	Ø.043 [1.09]		<table border="1"> <thead> <tr> <th>CARD EXTENDER</th> <th>ACCEPTS .062 [1.57] PCB</th> </tr> <tr> <th>TAIL LENGTH</th> <th>MODIFICATION CODE</th> </tr> </thead> <tbody> <tr> <td>.210 [5.33] EYELET (RE)</td> <td>-S13</td> </tr> <tr> <td>.185 [4.70] DIP SOLDER (RT)</td> <td>-S13</td> </tr> <tr> <td>.425 [10.70] DIP SOLDER (RY)</td> <td>-S13</td> </tr> </tbody> </table>	CARD EXTENDER	ACCEPTS .062 [1.57] PCB	TAIL LENGTH	MODIFICATION CODE	.210 [5.33] EYELET (RE)	-S13	.185 [4.70] DIP SOLDER (RT)	-S13	.425 [10.70] DIP SOLDER (RY)	-S13
	CARD EXTENDER	ACCEPTS .062 [1.57] PCB													
TAIL LENGTH	MODIFICATION CODE														
.210 [5.33] EYELET (RE)	-S13														
.185 [4.70] DIP SOLDER (RT)	-S13														
.425 [10.70] DIP SOLDER (RY)	-S13														
.440 [11.15] (RY)	.140 [3.56]	Ø.043 [1.09]													
	.185 [4.70] (RX)	.200 [5.08]	Ø.043 [1.09]		<table border="1"> <thead> <tr> <th>EYELET</th> <th>ACCEPTS 3-#26 AWG</th> </tr> </thead> <tbody> <tr> <td>.007 [0.18] THICK (RE)</td> <td></td> </tr> <tr> <td>.275 [6.98]</td> <td></td> </tr> <tr> <td>.014 [0.36] THICK (TE)</td> <td></td> </tr> </tbody> </table>	EYELET	ACCEPTS 3-#26 AWG	.007 [0.18] THICK (RE)		.275 [6.98]		.014 [0.36] THICK (TE)			
EYELET	ACCEPTS 3-#26 AWG														
.007 [0.18] THICK (RE)															
.275 [6.98]															
.014 [0.36] THICK (TE)															
	CRIMP TO CENTER (SX)														
	.160 [4.06]		Ø.043 [1.09]												

MOUNTING STYLE





.100" [2.54 mm] Contact Centers, .431" [10.95 mm] Insulator Height
Dip Solder/Eyelet/Right Angle for .062" [1.57] or .031" [0.79] Mating PCB

PART NUMBER OPTIONS

MATERIALS (Insulator/Contact)

- E = PBT/Phosphor Bronze (Standard)
- R = PPS/Phosphor Bronze
- G = PA9T/Phosphor bronze
- H = PBT/Beryllium Copper
- A = PPS/Beryllium Copper
- J = PA9T/Beryllium Copper
- *F = PPS/Spinodal (Overall Gold Plating Only)
Consult Factory for Special Soldering Guidelines
- *C = PPS/Beryllium Nickel (Overall Gold Plating Only)
- *W = PEEK/Beryllium Nickel (Overall Gold Plating Only)
*Consult Factory for availability.

CONTACT FINISH - RoHS Compliant

All platings are Lead Free and have .000050" Nickel underplate

	Contact Surface	Termination
B =	.00010" Gold	.000100" Pure Tin, Matte
C =	.000030" Gold	.000100" Pure Tin, Matte
G =	.000010" Gold	.000005" Gold
Y =	.000030" Gold	.000005" Gold
	Contact Surface	Overall Plating
S =	.000010" Gold	.000010" Gold
M =	.000030" Gold	.000010" Gold
E =	.000100" Pure Tin, Matte	.000100" Pure Tin, Matte

CONTACT CENTERS

C = .100" [2.54mm]

E B C 43 D RE H - Sxxx

MODIFICATIONS (Consult Factory)

OMIT FOR STANDARD

- S13 = Card Extender Accepts .062" [1.57] PCB (RE, RT, RY Terminations Only)
- S734 = .031" ± .008" [.79 ± .20] Thick Mating PCB

MOUNTING STYLE (Opposite Page)

- H = .125" [3.18mm] Clearance Holes
- N = No Mounting
- B = Open Cardslot
- S = Side Mounting
- I = Threaded Insert
- F = Floating Bobbin

TERMINATION TYPE (Opposite Page)

- RA = Right Angle
- RE = Eyelet (Standard)
- TE = Eyelet (Overall Plated Only)
- ET**, RT = .140" [3.56mm] x .200" [5.08mm] Dip Solder
- EY**, RY = .140" [3.56mm] x .440" [11.18mm] Dip Solder
- RX = .200" [5.08mm] x .185" [4.70mm] Dip Solder
- SX = .110" [2.79mm] Centered Dip Solder

READOUT (Opposite Page)

- D = Dual
- H = Half Loaded

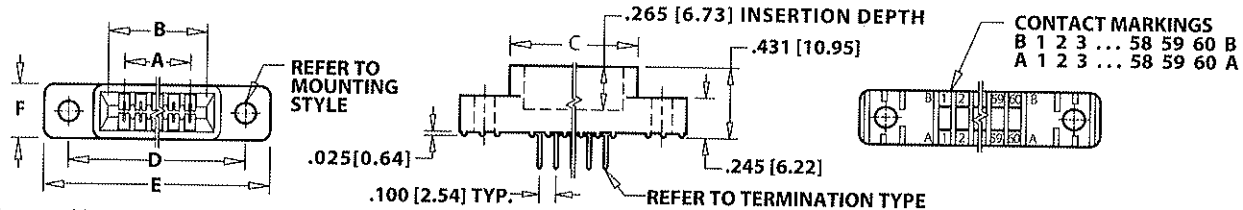
NUMBER OF CONTACT POSITIONS

See Chart Below

**ET & EY ONLY available in 'B' & 'C' Plating code

DIMENSIONS

Dimensions in [] are in millimeters, all others are in inches.



Tolerances with PPS Insulator Material may vary slightly due to shrinkage differential; Consult Factory.

POSITIONS/ CONTACTS	INCHES						[MILLIMETERS]					
	A±.008	B±.008	C±.015	D±.010	E±.020	F±.005	A±0.20	B±0.20	C±0.38	D±0.25	E±0.51	F±0.13
04/08*	0.300	0.500	0.675	0.975	1.275		7.62	12.70	17.15	24.77	32.39	
05/10	0.400	0.600	0.775	1.075	1.375		10.16	15.24	19.69	27.31	34.93	
06/12	0.500	0.700	0.875	1.175	1.475		12.70	17.78	22.23	29.85	37.47	
07/14	0.600	0.800	0.975	1.275	1.575		15.24	20.32	24.77	32.39	40.01	
08/16	0.700	0.900	1.075	1.375	1.675		17.78	22.86	27.31	34.93	42.55	
10/20	0.900	1.100	1.275	1.575	1.875		22.86	27.94	32.39	40.01	47.63	
12/24	1.100	1.300	1.475	1.775	2.075		27.94	33.02	37.47	45.09	52.71	
13/26	1.200	1.400	1.575	1.875	2.175		30.48	35.56	40.01	47.63	55.25	
15/30	1.400	1.600	1.775	2.075	2.375		35.56	40.64	45.09	52.71	60.33	
17/34	1.600	1.800	1.975	2.275	2.575		40.64	45.72	50.17	57.79	65.41	
18/36	1.700	1.900	2.075	2.375	2.675	0.330	43.18	48.26	52.71	60.33	67.95	8.38
19/38	1.800	2.000	2.175	2.475	2.775		45.72	50.80	55.25	62.87	70.49	
20/40	1.900	2.100	2.275	2.575	2.875		48.26	53.34	57.79	65.41	73.03	
22/44	2.100	2.300	2.475	2.775	3.075		53.34	58.42	62.87	70.49	78.11	
23/46*	2.200	2.400	2.575	2.875	3.175		55.88	60.96	65.41	73.03	80.65	
25/50	2.400	2.600	2.775	3.075	3.375		60.96	66.04	70.49	78.11	85.73	
26/52	2.500	2.700	2.875	3.175	3.475		63.50	68.58	73.03	80.65	88.27	
28/56	2.700	2.900	3.075	3.375	3.675		68.58	73.66	78.11	85.73	93.35	
30/60	2.900	3.100	3.275	3.575	3.875		73.66	78.74	83.19	90.81	98.43	
31/62	3.000	3.200	3.375	3.675	3.975		76.20	81.28	85.73	93.35	100.97	
35/70	3.400	3.600	3.775	4.075	4.375		86.36	91.44	95.89	103.51	111.13	
36/72	3.500	3.700	3.875	4.175	4.475		88.90	93.98	98.43	106.05	113.67	
40/80	3.900	4.100	4.275	4.575	4.875		99.06	104.14	108.59	116.21	123.83	
43/86	4.200	4.400	4.575	4.875	5.175		106.68	111.76	116.21	123.83	131.45	
44/88	4.300	4.500	4.675	4.975	5.275		109.22	114.30	118.75	126.37	133.99	
49/98	4.800	5.000	5.175	5.475	5.775	0.400	121.92	127.00	131.45	139.07	146.69	10.16
50/100	4.900	5.100	5.275	5.575	5.875		124.46	129.54	133.99	141.61	149.23	
52/104*	5.100	5.300	5.475	5.775	6.075		129.54	134.62	139.07	146.69	154.31	
60/120	5.900	6.100	6.275	6.575	6.875		149.86	154.94	159.39	167.01	174.63	
65/130	6.400	6.600	6.775	7.075	7.375		162.56	167.64	172.09	179.71	187.33	

* Consult Factory For Availability