

阅读申明

- 1.本站收集的数据手册和产品资料都来自互联网，版权归原作者所有。如读者和版权方有任何异议请及时告之，我们将妥善解决。
- 2.本站提供的中文数据手册是英文数据手册的中文翻译，其目的是协助用户阅读，该译文无法自动跟随原稿更新，同时也可能存在翻译上的不当。建议读者以英文原稿为参考以便获得更精准的信息。
- 3.本站提供的产品资料，来自厂商的技术支持或者使用者的心得体会等，其内容可能存在描述上的差异，建议读者做出适当判断。
- 4.如需与我们联系，请发邮件到marketing@iczoom.com，主题请标有“数据手册”字样。

Read Statement

1. The datasheets and other product information on the site are all from network reference or other public materials, and the copyright belongs to the original author and original published source. If readers and copyright owners have any objections, please contact us and we will deal with it in a timely manner.
2. The Chinese datasheets provided on the website is a Chinese translation of the English datasheets. Its purpose is for reader's learning exchange only and do not involve commercial purposes. The translation cannot be automatically updated with the original manuscript, and there may also be improper translations. Readers are advised to use the English manuscript as a reference for more accurate information.
3. All product information provided on the website refer to solutions from manufacturers' technical support or users the contents may have differences in description, and readers are advised to take the original article as the standard.
4. If you have any questions, please contact us at marketing@iczoom.com and mark the subject with "Datasheets" .

PLATING SPECIFICATIONS		
CONTACT	TERMINAL	
A .000015" GOLD	.0001" TINLEAD	
D .00003" GOLD	.00003" GOLD OVERALL	
G .00001" GOLD	.000005" GOLD	
M .00003" GOLD	.00001" GOLD OVERALL	
N .00005" GOLD	.0001" TINLEAD	
O .00003" GOLD	.0001" TINLEAD	
P GOLD FLASH	GOLD FLASH	
R .00002" GOLD	.0001" TINLEAD	
S .00001" GOLD	.00001" GOLD OVERALL	
T .0001" TINLEAD	.0001" TINLEAD OVERALL	
V .00003" GOLD	.000005" GOLD	
W GOLD FLASH	.0001" TINLEAD	
X .00003" GOLD	.0001" TINLEAD	
Y .00003" GOLD	.000005" GOLD	
Z .00001" GOLD	.0001" TINLEAD	

ITEM NO.	QTY.	DESCRIPTION	DRAWING # REF
1	1	B30HD-A350	10028
2	60	E_B-DHH	10011

SAMPLE PART NUMBER

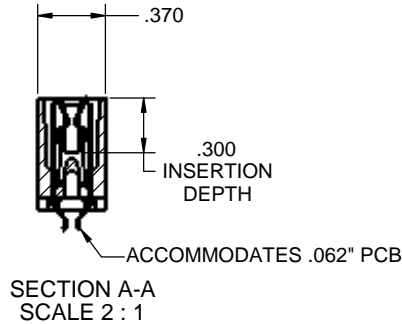
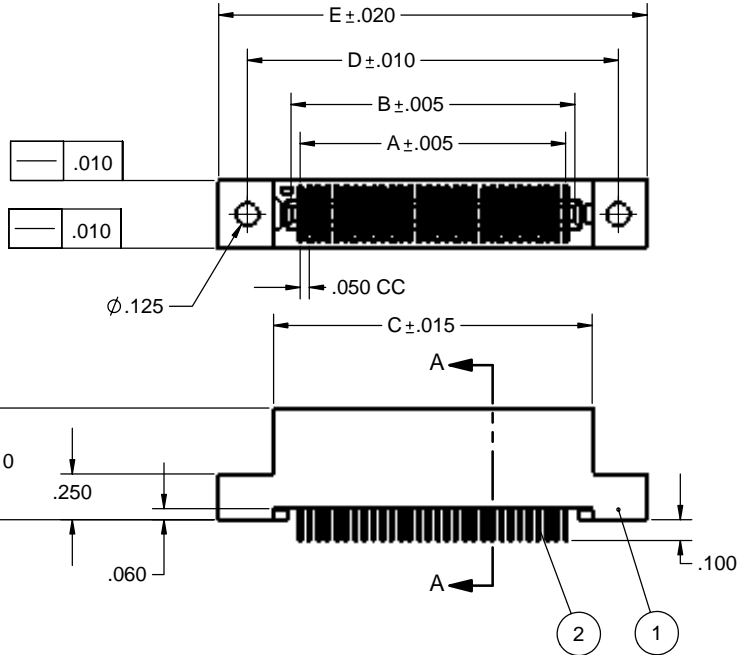
RZB30DHRD

PLATING
(SEE TABLE)

MOUNTING STYLE
(SEE PAGE #2)

TERMINATION TYPE
(SEE PAGE #2)

	A	B	C	D	E	POSITIONS
R_B05DHRD	0.200	0.300	0.490	0.776	1.090	5
R_B06DHRD	0.250	0.350	0.540	0.826	1.140	6
R_B09DHRD	0.400	0.500	0.690	0.976	1.290	9
R_B10DHRD	0.450	0.550	0.740	1.026	1.340	10
R_B13DHRD	0.600	0.700	0.890	1.176	1.490	13
R_14DHRD	0.650	0.750	0.940	1.226	1.540	14
R_B15DHRD	0.700	0.800	0.990	1.276	1.590	15
R_B20DHRD	0.950	1.050	1.240	1.526	1.840	20
R_B22DHRD	1.050	1.150	1.340	1.626	1.940	22
R_B25DHRD	1.200	1.300	1.490	1.776	2.090	25
R_B30DHRD	1.450	1.550	1.740	2.026	2.340	30
R_B34DHRD	1.650	1.750	1.940	2.226	2.540	34
R_B35DHRD	1.700	1.800	1.990	2.276	2.590	35
R_B40DHRD	1.950	2.050	2.240	2.526	2.840	40
R_B45DHRD	2.200	2.300	2.490	2.776	3.090	45
R_B50DHRD	2.450	2.550	2.740	3.026	3.340	50
R_B55DHRD	2.700	2.800	2.990	3.276	3.590	55
R_B60DHRD	2.950	3.050	3.240	3.526	3.840	60
R_B64DHRD	3.150	3.250	3.440	3.726	4.040	64
R_B65DHRD	3.200	3.300	3.490	3.776	4.090	65
R_B66DHRD	3.250	3.350	3.540	3.826	4.140	66
R_B70DHRD	3.450	3.550	3.740	4.026	4.340	70
R_B75DHRD	3.700	3.800	3.990	4.276	4.590	75
R_B80DHRD	3.950	4.050	4.240	4.526	4.840	80
R_B85DHRD	4.200	4.300	4.490	4.776	5.090	85
R_B90DHRD	4.450	4.550	4.740	5.026	5.340	90
R_B95DHRD	4.700	4.800	4.990	5.276	5.590	95
R_B100DHRD	4.950	5.050	5.240	5.526	5.840	100
R_B105DHRD	5.200	5.300	5.490	5.776	6.090	105
R_B108DHRD	5.350	5.450	5.640	5.926	6.240	108
R_B110DHRD	5.450	5.550	5.740	6.026	6.340	110
R_B120DHRD	5.950	6.050	6.240	6.526	6.840	120



30 POSITION BODY USED AS EXAMPLE ONLY.

NOTES:

- THIS SPECIFICATION COVERS THE REQUIREMENT FOR DUAL EDGE CARD CONNECTORS.
- INSULATOR MATERIAL: POLYPHENYLENE SULFIDE.
- CONTACT MATERIAL: PHOSPHOR BRONZE.
- PLATING: SEE PLATING SPEC. TABLE AND SAMPLE PART NUMBER
- TEMPERATURE: -65°C TO 125°C
- UL FLAMMABILITY RATING: 94V-0
- VOLTAGE RATING: 125 VDC MINIMUM AT SEA LEVEL.
- CURRENT RATING: 1 AMP
- VOLTAGE DROP: 30 MILLI VOLT AT RATED CURRENT
- INSULATION RESISTANCE: 1000 MEGA OHM
- CONNECTOR IDENTIFICATION: THE PART SHALL BE MARKED WITH A PART NUMBER AND DATE CODE.
- BOARD THICKNESS ACCOMMODATED: .054/.070
- BOARD INSERTION FORCE: 6 OUNCE AVERAGE PER CONTACT PAIR USING .062 PCB
- BOARD WITHDRAWL FORCE: 1 OUNCE MINIMUM PER CONTACT PAIR USING .062 PCB
- TOLERANCE: ±.010" UNLESS OTHERWISE NOTED.

COMPUTER GENERATED DOCUMENT DO NOT CHANGE MANUALLY

PROPRIETARY AND CONFIDENTIAL
THIS DRAWING AND DESIGN IS THE PROPERTY OF SULLINS ELECTRONICS. IT MAY NOT BE USED FOR ANY PURPOSE OTHER THAN BY THE OWNER. SULLINS ELECTRONICS DOES NOT AUTHORIZE THE REPRODUCTION OR CONVEYANCE OF ANY INFORMATION CONTAINED HEREIN.

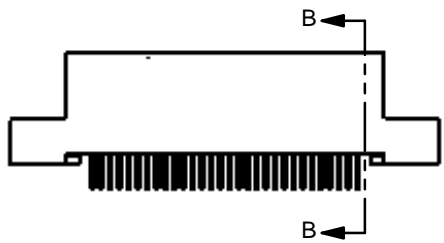
A	80	ORIGINAL RELEASE	10/21/03	JFW	AJT
REV.	ECO NO.	DESCRIPTION	DATE	BY	APP'VD
		UNLESS OTHERWISE SPECIFIED: DIMENSIONS ARE IN INCHES TOLERANCES: FRACTIONAL: 1/32 ANGULAR: ±1° TWO PLACE DECIMAL ±.02 THREE PLACE DECIMAL ±.005 FOUR PLACE DECIMAL ±.0005 INTERPRET GEOMETRIC TOLERANCING PER:	DRAWN 10/21/03 JWHITE	NAME AJT	
		MATERIAL NOTED			
		FINISH N/A			
		APPLICATION DO NOT SCALE DRAWING			

SULLINS ELECTRONICS

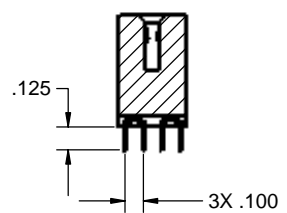
PART NO./DESCRIPTION:
HH, HF, HR TERMINATIONS
R_B__DH__

SIZE DWG. NO. REV
C 10081 A

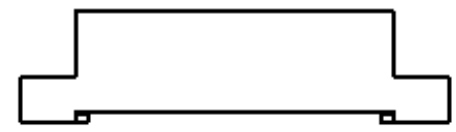
SCALE: 1:1 SHEET 1 OF 2



R_B30DHHD
STAGGERED DIP SOLDER



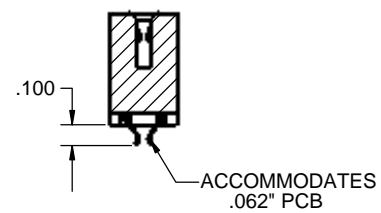
SECTION B-B
SCALE 2 : 1



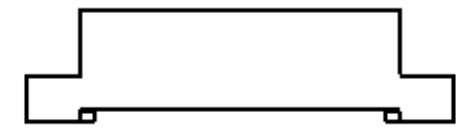
R_B30DH_D
FLUSH MOUNTING
Ø.125 MOUNTING HOLES



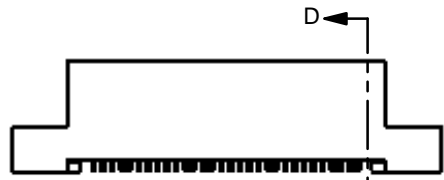
R_B30DHRD
CARD EXTENDER



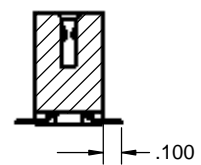
SECTION C-C
SCALE 2 : 1



R_B30D_T
FLUSH MOUNTING
#4-40 THREADED INSERT
MOUNTING HOLES

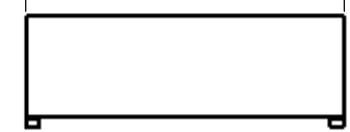


R_B30DHFD
SURFACE MOUNT

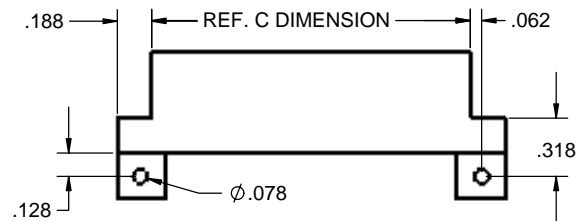


SECTION D-D
SCALE 2 : 1

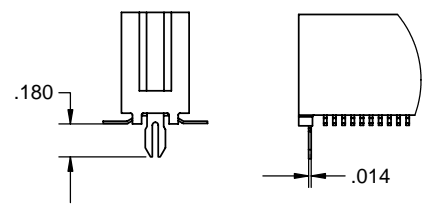
REF. C DIMENSION



R_B30D_N
NO MOUNTING EARS



R_B30D_Q
STRADDLE MOUNT



BOARD LOCK
(AVAILABLE FOR ALL
TERMINATION TYPES)

COMPUTER
GENERATED
DOCUMENT DO
NOT CHANGE
MANUALLY

PROPRIETARY AND CONFIDENTIAL
THIS DRAWING AND DESIGN IS THE
PROPERTY OF SULLINS ELECTRONICS.
IT MAY NOT BE USED FOR ANY
PURPOSE OTHER THAN BY THE OWNER.
SULLINS ELECTRONICS DOES NOT
AUTHORIZE THE REPRODUCTION OR
CONVEYANCE OF ANY INFORMATION
CONTAINED HEREIN.

UNLESS OTHERWISE SPECIFIED:		DATE	NAME
DIMENSIONS ARE IN INCHES		10/21/03	JWHITE
TOLERANCES:			
FRACTIONAL: 1/32			
ANGULAR: ±1°			
TWO PLACE DECIMAL			
THREE PLACE DECIMAL ±.005			
INTERPRET GEOMETRIC TOLERANCING PER:			
MATERIAL	N/A		
FINISH	N/A		
DO NOT SCALE DRAWING			

SIZE	DWG. NO.	REV
C	10081	A
SCALE: 1:1	WEIGHT:	SHEET 2 OF 2

SULLINS ELECTRONICS	
PART NO./DESCRIPTION	
R_B__DH__	