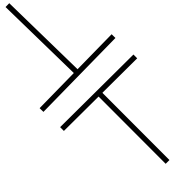


阅读申明

- 1.本站收集的数据手册和产品资料都来自互联网，版权归原作者所有。如读者和版权方有任何异议请及时告之，我们将妥善解决。
- 2.本站提供的中文数据手册是英文数据手册的中文翻译，其目的是协助用户阅读，该译文无法自动跟随原稿更新，同时也可能存在翻译上的不当。建议读者以英文原稿为参考以便获得更精准的信息。
- 3.本站提供的产品资料，来自厂商的技术支持或者使用者的心得体会等，其内容可能存在描述上的差异，建议读者做出适当判断。
- 4.如需与我们联系，请发邮件到marketing@iczoom.com，主题请标有“数据手册”字样。

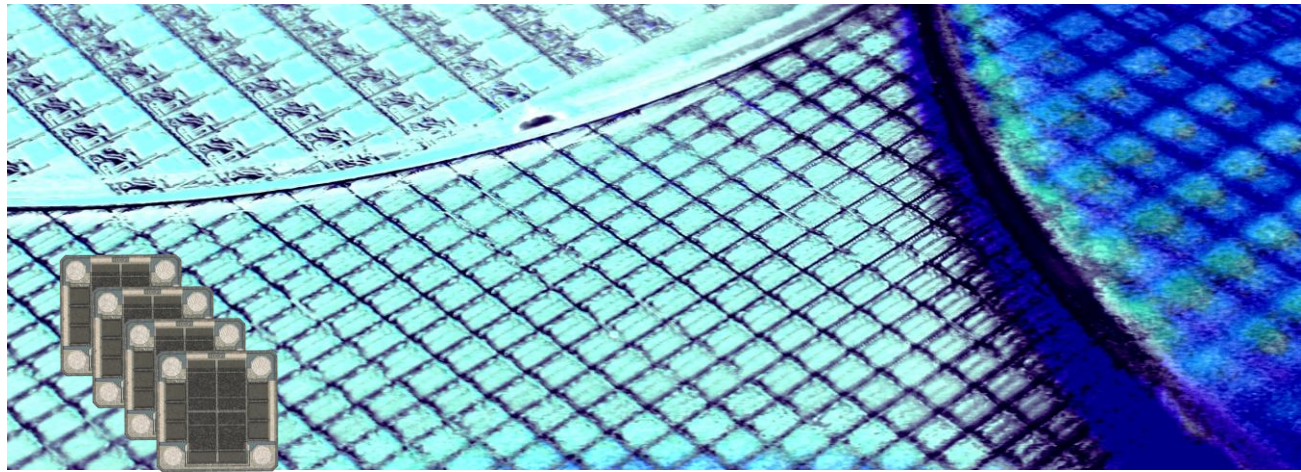
Read Statement

1. The datasheets and other product information on the site are all from network reference or other public materials, and the copyright belongs to the original author and original published source. If readers and copyright owners have any objections, please contact us and we will deal with it in a timely manner.
2. The Chinese datasheets provided on the website is a Chinese translation of the English datasheets. Its purpose is for reader's learning exchange only and do not involve commercial purposes. The translation cannot be automatically updated with the original manuscript, and there may also be improper translations. Readers are advised to use the English manuscript as a reference for more accurate information.
3. All product information provided on the website refer to solutions from manufacturers' technical support or users the contents may have differences in description, and readers are advised to take the original article as the standard.
4. If you have any questions, please contact us at marketing@iczoom.com and mark the subject with "Datasheets" .



ETSC – Embedded & Wirebond Temperature Silicon Capacitor

Rev 3.6



Key features

- High Operating temperature (200°C)
- Low profile (250µm)
- High stability of capacitance value:
 - ◆ Temperature $\pm 1\%$ (-55°C to +200°C)
 - ◆ Voltage $< 0.1\%$ /Volts
 - ◆ Negligible capacitance loss through ageing
- Low leakage current down to 100pA
- High reliability
- Pad finishing : Aluminum

Thanks to the unique IPDiA Silicon capacitor technology, most of the problems encountered in demanding applications can be solved.

Embedded Temperature Silicon Capacitors are dedicated to applications where **reliability** up to **200°C** is the main parameter.

ETSC are the most appropriate solution for Chip On Board, Chip On Foil, Chip On Glass, Chip On Ceramic, flip chip and embedded applications.

This technology features a capacitor integration capability (up to 250nF/mm²) which offers capacitance value similar to X7R dielectric, but with better electrical performances than C0G/NP0 dielectrics, up to **200°C**.

Key applications

- All applications up to 200°C, such as defense, downhole and automotive industries
- High reliability applications
- Replacement of X7R and C0G dielectrics
- Decoupling / Filtering / Charge pump (i.e.: motor management, temperature sensors)
- Downsizing

ETSC provides the highest capacitor **stability** over the full -55°C/+200°C temperature range in the market with a **TC<1%**.

The IPDiA technology offers industry leading performances relative to **Failure rate** with a FIT<0,017.

This technology also offers **high reliability**, up to 10 times better than alternative capacitor technologies, such as Tantalum or MLCC, and eliminates cracking phenomena.

This Silicon based technology is ROHS compliant and compatible with lead free reflow soldering process.

Electrical specification

		Capacitance value						
		10	15	22	33	39	47	68
Unit	10pF	Contact IPDIA Sales	Contact IPDIA Sales	Contact IPDIA Sales	Contact IPDIA Sales	390pF/0202/30V 935 124 72C 339	470pF/0202/30V 935 124 72C 347	680pF/0202/30V 935 124 72C 368
	0.1nF	1nF/0202/30V 935 124 72C 410	Contact IPDIA Sales	Contact IPDIA Sales	Contact IPDIA Sales	Contact IPDIA Sales	Contact IPDIA Sales	Contact IPDIA Sales
	1nF	10nF/0202/30V 935 124 72C 510	Contact IPDIA Sales	Contact IPDIA Sales	33nF/0404/30V 935 124 72F 533	Contact IPDIA Sales	Contact IPDIA Sales	Contact IPDIA Sales
	10nF	100nF/0404/11V 935 124 42F 610 100nF/0605/30V 935 124 72G 610	Contact IPDIA Sales	220nF/0505/11V 935 124 42H 622	Contact IPDIA Sales	Contact IPDIA Sales	Contact IPDIA Sales	Contact IPDIA Sales
	0.1µF	1µF/1208/11V 935 124 42S 710 1µF/1616/30V 935 124 72Y 710	Contact IPDIA Sales	2.2µF/1612/11V 935 124 42V 722	3.3µF/1616/11V 935 124 42Y 733	Contact IPDIA Sales	4.7µF/2016/11V 935 124 42X 747	

Parameters	Value
Capacitance range	390pF to 4.7µF ^(*)
Capacitance tolerances	±15% ^(*)
Operating temperature range	-55 to 200 °C ^(**)
Storage temperatures	-70 to 215 °C
Temperature coefficient	±1%, from -55 to +200°C
Breakdown Voltage (BV)	30, 11V
Capacitance variation versus RVDC	0.1 % /V (from 0 V to RVDC)
Equivalent Serial Inductor (ESL)	Max 100 pH
Equivalent Serial Resistor (ESR)	Max 0.1Ω
Insulation resistance	50GΩ min @ RVDC,25°C 20GΩ min @ RVDC,200°C
Aging	Negligible, < 0.001% / 10000h
Reliability	FIT<0.017 parts / billions hours
Capacitor height	Max 250µm ^(*)

(*) Other values on request

(**) For extended temperature range (up to +250°C), see Embedded Xtreme Temperature Silicon Capacitor product (EXSC).

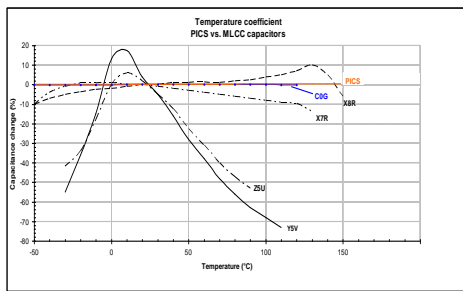


Fig.1 Capacitance change versus temperature variation compared to alternative technologies

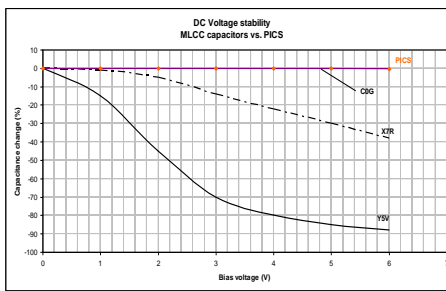


Fig.2 Capacitance change versus voltage variation compared to alternative

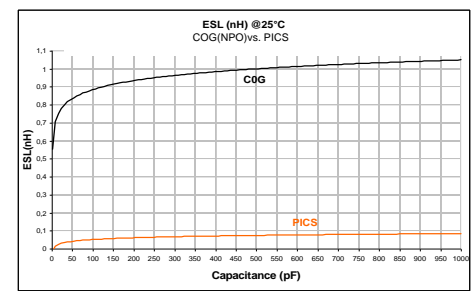


Fig.3 ESL versus capacitance value compared to alternative technologies

Part Number

935.124.	B.2.	S.	U	XX →	Value
i.e: 100nF/0404 → 935 124 42F 610	Breakdown Voltage 4 = 11V 1 = 20V 7 = 30V 6 = 50V	Size F = 0404 G = 0605 H = 0505 C = 0202 I = 0302 V = 1612 S = 1208 Y = 1616 V = 1216 X = 2016	Unit 0 = 10 f 1 = 0.1 p 2 = 1 p 3 = 10 p 4 = 0.1 n	5 = 1 n 6 = 10 n 7 = 0.1 µ 8 = 1 µ 9 = 10 µ	10 15 22 33 39 47 68

Termination

Pad finishing in Aluminum (3µm thickness +/-10%)

Applicable for almost all embedded applications.

Parts should be glued with non conductive paste. If conductive glue is used on the backside of the silicon cap, it is strongly recommended to connect the backside and pads 3&4 to the same level (GND preferred).

Pinning definition & Outline

pin #	Symbol	Description
1, 2	Signal	Signal
3, 4	GND	Ground

Typ.	0202	0302	0303	0404	0505	0605	1208	1612	1616	2016
Comp. size	A	0.58 ±0.05	0.80 ±0.05	0.80 ±0.05	1.00 ±0.05	1.25 ±0.05	1.50 ±0.05	3.00 ±0.05	4.00 ±0.05	5.00 ±0.05
	B	0.58 ±0.05	0.64 ±0.05	0.80 ±0.05	1.00 ±0.05	1.25 ±0.05	1.25 ±0.05	2.00 ±0.05	3.00 ±0.05	4.00 ±0.05
	c	0.15	0.15	0.15	0.15	0.15	0.15	0.15	0.15	0.15
	d	0.3	0.52	0.52	0.72	0.97	1.22	2.72	3.72	3.72
	e	0.3	0.36	0.52	0.72	0.97	1.22	1.72	2.72	3.72

Packaging

Tape and reel, tray, waffle pack or wafer delivery.

Reproduction in whole or in part is prohibited without the prior written consent of the copyright owner. The information presented in this document does not form part of any quotation or contract, is believed to be accurate and reliable and may be changed without notice. No liability will be accepted by the publisher for any consequence of its use. Publication thereof does not convey nor imply any license under patent- or other industrial or intellectual property rights.