

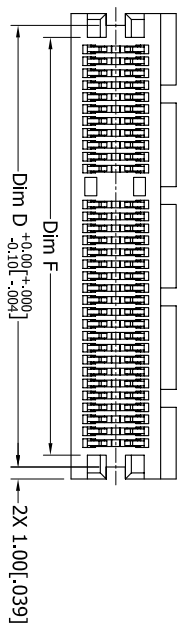
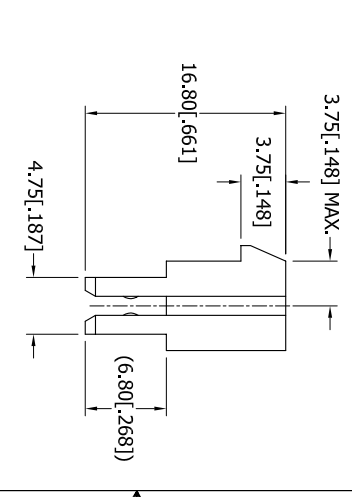
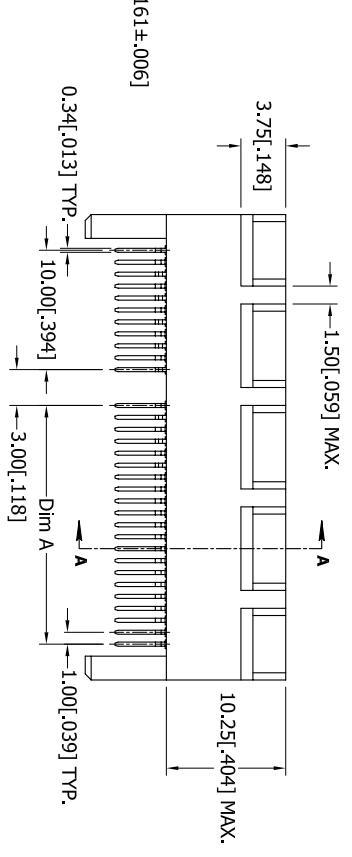
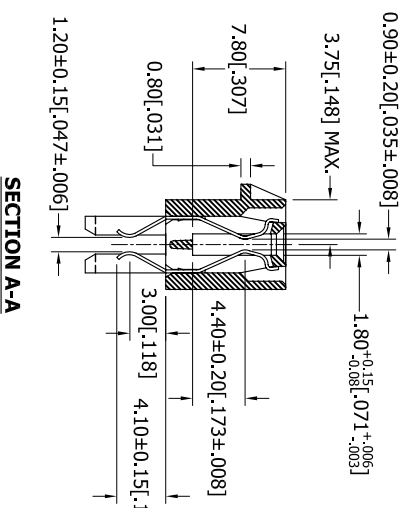
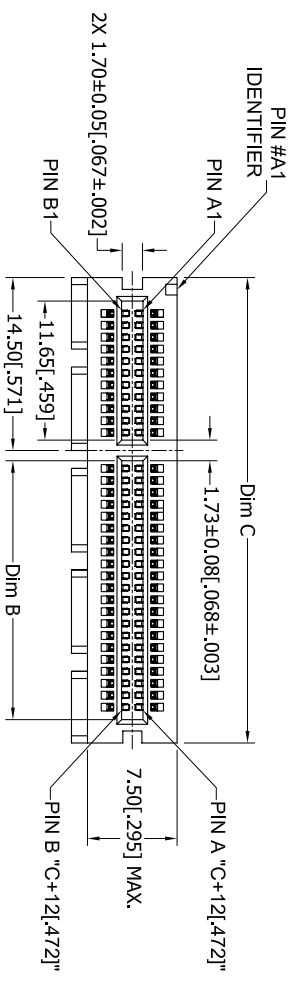
阅读申明

- 1.本站收集的数据手册和产品资料都来自互联网，版权归原作者所有。如读者和版权方有任何异议请及时告之，我们将妥善解决。
- 2.本站提供的中文数据手册是英文数据手册的中文翻译，其目的是协助用户阅读，该译文无法自动跟随原稿更新，同时也可能存在翻译上的不当。建议读者以英文原稿为参考以便获得更精准的信息。
- 3.本站提供的产品资料，来自厂商的技术支持或者使用者的心得体会等，其内容可能存在描述上的差异，建议读者做出适当判断。
- 4.如需与我们联系，请发邮件到marketing@iczoom.com，主题请标有“数据手册”字样。

Read Statement

1. The datasheets and other product information on the site are all from network reference or other public materials, and the copyright belongs to the original author and original published source. If readers and copyright owners have any objections, please contact us and we will deal with it in a timely manner.
2. The Chinese datasheets provided on the website is a Chinese translation of the English datasheets. Its purpose is for reader's learning exchange only and do not involve commercial purposes. The translation cannot be automatically updated with the original manuscript, and there may also be improper translations. Readers are advised to use the English manuscript as a reference for more accurate information.
3. All product information provided on the website refer to solutions from manufacturers' technical support or users the contents may have differences in description, and readers are advised to take the original article as the standard.
4. If you have any questions, please contact us at marketing@iczoom.com and mark the subject with "Datasheets" .

REVISIONS				
REV.	ECO. NO	DESCRIPTION	DATE	BY
A	1595	INITIAL RELEASE	11/31/07	VJ
B	1707	UPDATE P/N CODING CHART, PLATING	05/30/08	ASK

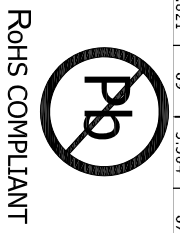


PART NUMBER	POSITIONS/ CONTACTS	A		B		C		D		E		F		G		SPACERS 'H'	
		MM	INCH	MM	INCH	MM	INCH	MM	INCH	MM	INCH	MM	INCH	MM	INCH		
N_EI8DHRN-194-0	18/36	6	0.236	7.65	0.301	25	0.984	23	0.906	9.5	0.374	21.20	0.835	8.15	0.321	6	0.236
N_EI32DHRN-194-0	32/64	20	0.787	21.65	0.852	39	1.535	37	1.457	23.5	0.925	35.20	1.386	22.15	0.872	20	0.787
N_E49DHRN-194-0	49/98	32	1.457	38.65	1.522	56	2.204	54	2.126	40.5	1.594	52.20	2.056	39.15	1.541	37	1.457
N_E82DHRN-194-0	82/164	70	2.756	71.65	2.821	89	3.504	87	3.429	73.5	2.893	85.20	3.356	72.15	2.841	70	2.756

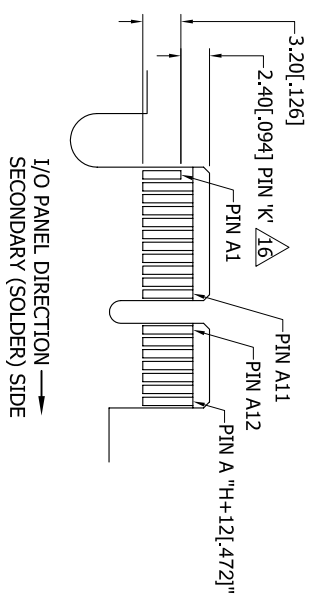
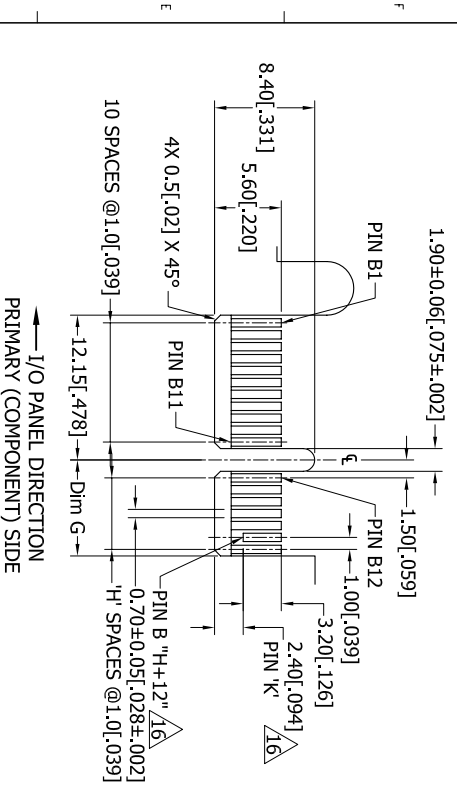
UNLESS OTHERWISE SPECIFIED:
DIMENSIONS ARE IN INCHES(MM)

THE INFORMATION HEREIN CONTAINS TRADE SECRETS AND PROPRIETARY INFORMATION OF SULLINS ELECTRONICS. IT IS TO BE KEPT CONFIDENTIAL AND NOT DISCLOSED TO OTHERS FOR ANY PURPOSES WITHOUT THE WRITTEN PERMISSION OF SULLINS ELECTRONICS. REMOVE ALL BURNS AND SHARP EDGES .010 MAX INTERPRET DIMENSIONS AND GEOMETRIC TOLERANCING PER: ANSI Y14.5M-1994

DESCRIPTION: STRADDLE MOUNT, W/ REGS, PCIe
PART NUMBER: N_EI-DHRN-194-0
SIZE DWG. NO.: 11043
SCALE: 2:1



- NOTES:
- INSULATOR MATERIAL: HIGH TEMPERATURE THERMOPLASTIC.
 - CONTACT MATERIAL: SEE PART NUMBER CODING.
 - PLATING: SEE PART NUMBER CODING.
 - OPERATING TEMPERATURE: -10°C ~ 85°C.
 - PROCESSING TEMP: 260°C FOR 10 SECONDS MAX.
 - UL FLAMMABILITY RATING: 94V-0
 - VOLTAGE RATING: 50 VDC MINIMUM AT SEA LEVEL.
 - CURRENT RATING: 1.1 AMP PER CONTACT.
 - VOLTAGE DROP: 44 MILLI VOLT AT RATED CURRENT.
 - INSULATION RESISTANCE: 1000 MEGA OHMS.
 - CONNECTOR IDENTIFICATION: THE PART SHALL BE MARKED WITH A PART NUMBER AND BARCODE.
 - BOARD THICKNESS ACCOMMODATED: 1.57±0.20[.062±.008].
 - BOARD INSERTION FORCE: 1.15N (117.3g) MAX PER CONTACT PAIR USING A 1.57[.062] TEST BLADE.
 - BOARD WITHDRAWAL FORCE: 0.15N (15.3g) MINIMUM PER CONTACT PAIR USING 1.57[.062] PCB
 - MODIFICATION: SEE PART NUMBER CODING.
 - NO THE BAR PERMITTED FROM CARD EDGE TO LEADING EDGE OF PAD FOR PINS 'A' AND 'K'.
 - CHAMFER EDGES MUST BE FREE OF CUTTING BURR.



PART NUMBER CODING
 N _ E _ _ DHRN - T94 _ 0

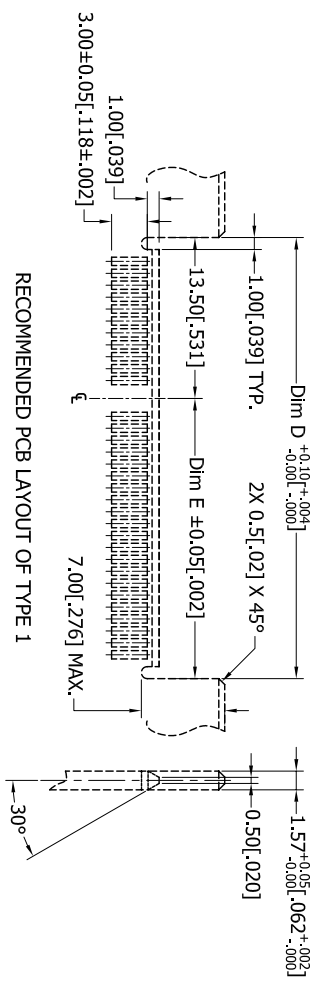
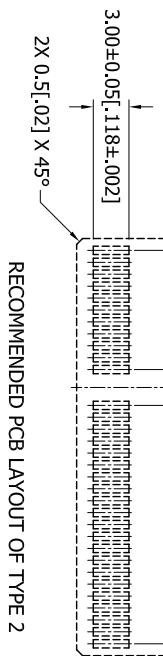
- POSITIONS**
- 18 (X1)
 - 32 (X4)
 - 49 (X8)
 - 82 (X16)

- COLOR**
- 1=BLACK
 - 2=BLUE
 - 3=GREEN
 - 4=PURPLE

PLATING
 ALL PLATINGS ARE LEAD FREE AND HAVE .000050" NICKEL UNDERPLATE ON CONTACT SURFACE AND TERMINATION

CONTACT SURFACE
 B=.000010" GOLD
 C=.000030" GOLD
 W=GOLD FLASH

TERMINATION
 .000100" PURE TIN, MATTE
 .000100" PURE TIN, MATTE
 .000100" PURE TIN, MATTE



RoHS COMPLIANT

UNLESS OTHERWISE SPECIFIED:
 DIMENSIONS ARE IN INCHES(MM)
 TOLERANCES:
 ANGULAR ±.30°
 .XX = .00XX (0.00XX)
 .XXX = .0005 (0.0127)
 SURFACE FINISH: 63 Ra
 REMOVE ALL BURRS AND SHARP EDGES .010 MAX
 INTERPRET DIMENSIONS AND GEOMETRIC TOLERANCING PER: ANSI Y14.5M-1994

REV	DATE	NAME	BY/APP
1	11/21/07	Y. JARA	

SULLINS
 CONNECTOR SOLUTIONS

STANDARD MOUNT, W/PEGS, PC-E

PART NUMBER
 N E DHRN-T94_0

SIZE DWG. NO.
 C 11043

SCALE: 2:1

SHEET 2 OF 2