

## 阅读申明

- 1.本站收集的数据手册和产品资料都来自互联网，版权归原作者所有。如读者和版权方有任何异议请及时告之，我们将妥善解决。
- 2.本站提供的中文数据手册是英文数据手册的中文翻译，其目的是协助用户阅读，该译文无法自动跟随原稿更新，同时也可能存在翻译上的不当。建议读者以英文原稿为参考以便获得更精准的信息。
- 3.本站提供的产品资料，来自厂商的技术支持或者使用者的心得体会等，其内容可能存在描述上的差异，建议读者做出适当判断。
- 4.如需与我们联系，请发邮件到marketing@iczoom.com，主题请标有“数据手册”字样。

## Read Statement

1. The datasheets and other product information on the site are all from network reference or other public materials, and the copyright belongs to the original author and original published source. If readers and copyright owners have any objections, please contact us and we will deal with it in a timely manner.
2. The Chinese datasheets provided on the website is a Chinese translation of the English datasheets. Its purpose is for reader's learning exchange only and do not involve commercial purposes. The translation cannot be automatically updated with the original manuscript, and there may also be improper translations. Readers are advised to use the English manuscript as a reference for more accurate information.
3. All product information provided on the website refer to solutions from manufacturers' technical support or users the contents may have differences in description, and readers are advised to take the original article as the standard.
4. If you have any questions, please contact us at marketing@iczoom.com and mark the subject with "Datasheets" .

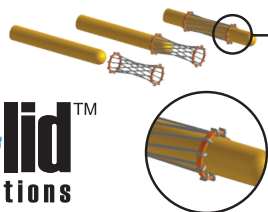
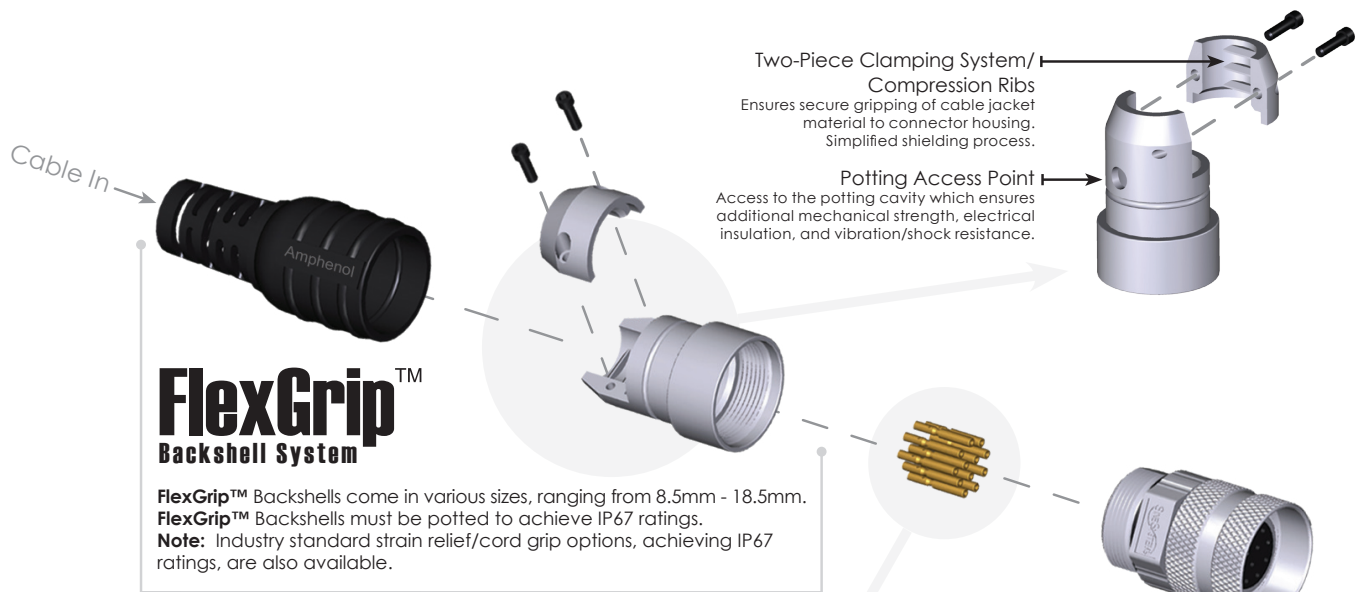


# MotionGrade™ M23 and M40

Circular DIN Connectors & Cables



MotionGrade™ M23 Connectors are designed to excel in performance and reliability in our customers' most demanding environments. Our innovations and experience as an industry leader in connector technology and total interconnect solutions allow us to offer such additional features as our FlexGrip™ Backshell System and RockSolid™ Contacts. These features combined with a simplistic design approach reduce initial procurement and assembly cost, while ensuring compatibility to all other existing standard layouts. Amphenol's MotionGrade™ M23 products are ideally suited for advanced servo drive encoder feedback applications, packaging, robotic, printing, machine tool, medical and automation environments where control signal transmission or power are required in a robust and compact delivery system.



- [+] Longer contact life
  - [+] Lower contact resistance
  - [+] Immunity to shock and vibration
  - [+] Low insertion and extraction forces
  - [+] Contact area extends 360° around pins
  - [+] Contact design runs cooler than competitors and is capable of providing more current capacity.
- Note:** Industry standard contacts are also available.

# Amphenol vs. Intercontec

<b>GENERAL SPECIFICATIONS</b>  Technical Data for Standard Signal Circular Connectors	<b>A Series</b> 12, 16 and 17 Position 1.0mm Contacts Only		<b>B Series</b> 6, 8 and 9 Position 1.0mm Contacts 2.0mm Contacts		<b>C Series</b> 6 and 8 Position 2.0mm Contacts 3.6mm Contacts	
	Amphenol	Intercontec	Amphenol	Intercontec	Amphenol	Intercontec
	Operating Temperature	-20 °C to +130°C	-20 °C to +130°C	-20 °C to +130°C	-20 °C to +130°C	-20 °C to +130°C
Degree of Protection	IP66/67 (plugged)	IP66/67 (plugged)	IP66/67 (plugged)	IP66/67 (plugged)	IP66/67 (plugged)	IP66/67 (plugged)

## Electrical Data - Contacts

Maximum Current (max. wire guage)	max. 9A	max. 9A	1.0mm: max. 9A	1.0mm: max. 9A	2.0mm: max. 28A (6 contacts) max. 30A (8-/9 contacts)	2.0mm: max. 28A (6 contacts) max. 30A (8-/9 contacts)
Maximum Voltage	125V (AC/DC)	125V (AC/DC)	1.0mm: 125V (AC/DC)	1.0mm: 125V (AC/DC)	2.0mm: max. 28A (6 contacts) max. 30A (8-/9 contacts)	2.0mm: max. 28A (6 contacts) max. 30A (8-/9 contacts)
Test Voltage (between contacts)	2500V	2500V	1.0mm: 2500V	1.0mm: 2500V	2.0mm: 6300V (AC/DC)	2.0mm: 6300V (AC/DC)
Contact Resistance	<5mΩ	<5mΩ	Both: <5mΩ	Both: <5mΩ	Both: 6000V	Both: 6000V
Mating Cycles	>50	>50	Both: >50	Both: >50	Both: >50	Both: >50

## Data According to VDE 0110/EN61984, Part 6.19.2.2

Pollution Degree	3	3	3	3	3	3
Overvoltage Category	III	III	III	III	III	III
Max. Operating Height	-	-	-	-	2000m	2000m

## Materials

Housing	Zinc Die Cast	Zinc Die Cast/Brass (Stainless Steel Option)	Zinc Die Cast	Zinc Die Cast/Brass (Stainless Steel Option)	Zinc Die Cast	Magnesium Die Cast/ Aluminum
Connecting Nut (some designs)	Brass, Nickel-plated	Brass, Nickel-plated	Brass, Nickel-plated	Brass, Nickel-plated	Brass, Nickel-plated	Brass, Nickel-plated

## FEATURES AND BENEFITS

<b>Lowest Installed Cost</b>	By providing enhanced performance and advancements to existing standard systems with improvements such as our FlexGrip™ design, these cost conscious innovations will increase the reliability & performance of one of the most dependable interconnect offerings available today.
<b>Superior Shielding</b>	First quality components coupled with a simplistic design provide maximum EMI/RFI shielding capabilities while reducing assembly preparation times.
<b>Assembly/Disassembly</b>	Overall design construction allows for one step process of contact extraction versus complete connector disassembly found within other brands. An integrated contact locking system ensures ease of use and definitive contact integrity upon insertion.
<b>Cable Strain Relief</b>	Your choice of either the innovative design features of FlexGrip™ or traditional cable strain relieving similar to existing standard systems.
<b>Fluid Resistance and Sealing</b>	In combination with our strain relief systems, Amphenol utilizes advanced sealing technologies & materials to ensure highest reliability when subjected to the harshest environments.
<b>Contacts</b>	By creating a 360° mating surface around the pin, Amphenol's RockSolid™ contact offering ensures longer contact life, lower contact resistance, immunizes against shock and vibration all while maintaining low insertion and extraction forces. Additionally, industry standard contacts are also available made with gold plated surfaces and high quality Copper alloys.

RoHS Compliant



All materials meet the requirements of the European Directive 2002/95/EC, Issue 13.2.2003.

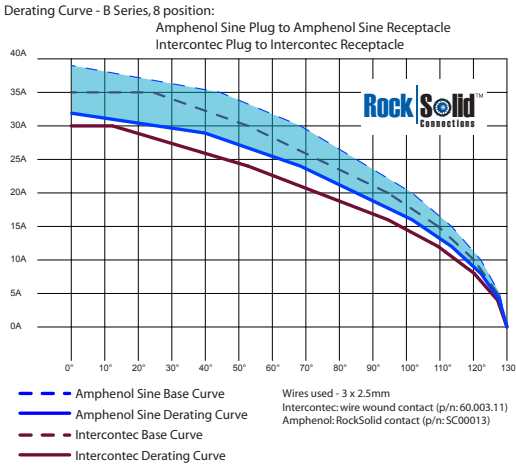
Add'l Approvals



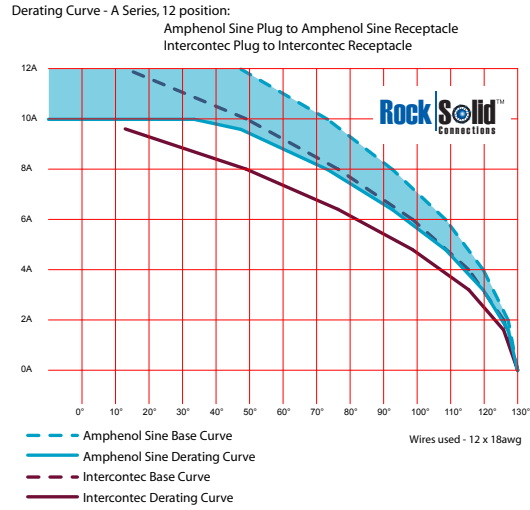
ISO 9001/2000

## PERFORMANCE ANALYSIS

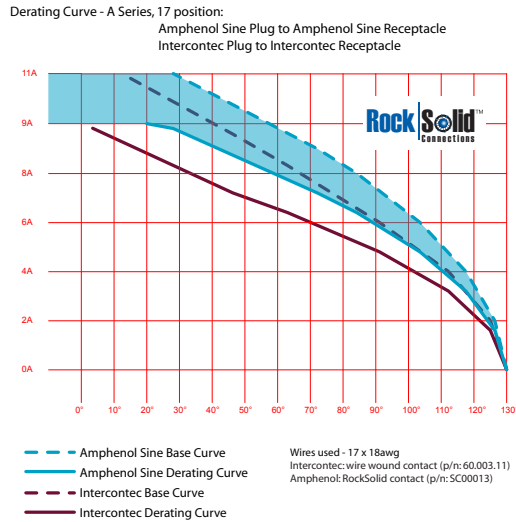
### Derating Curves - 8 pos.



### Derating Curves - 12 pos.

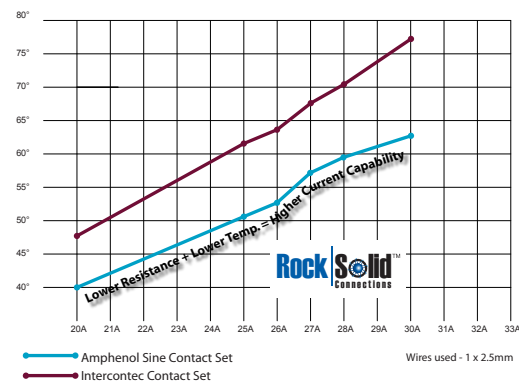


### Derating Curves - 17 pos.

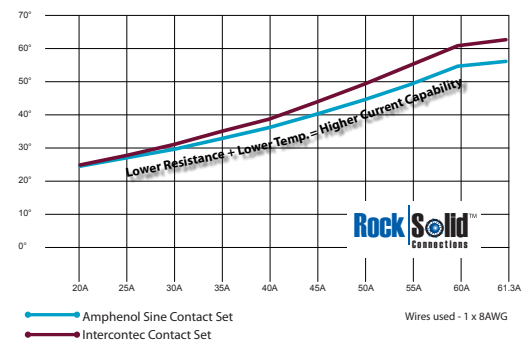


## Temperature Variance

Temperature Variance of M23 2mm Power Contacts



Temperature Variance of M40 3.6mm Power Contacts

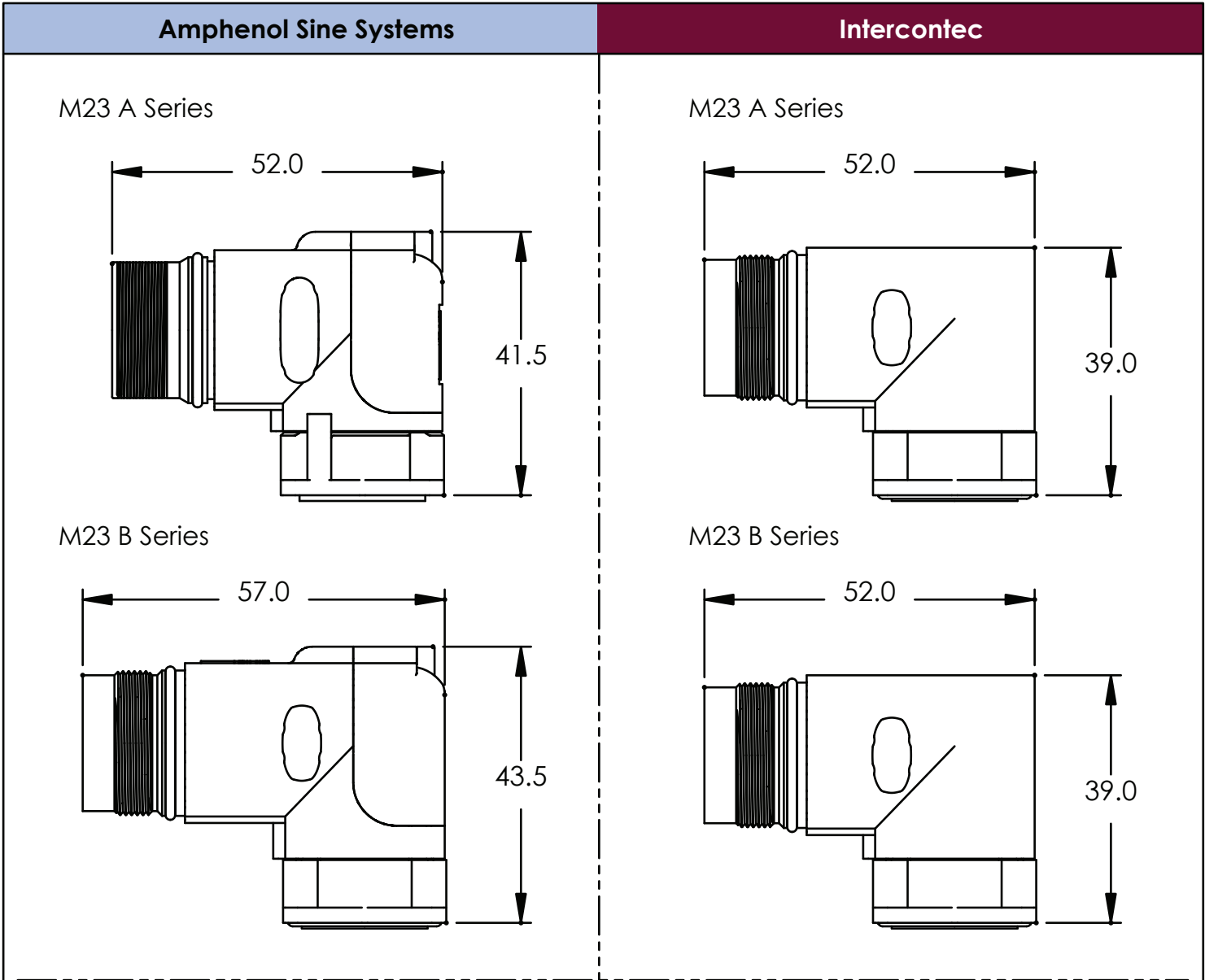


M23 TECHNICAL SPECIFICATIONS

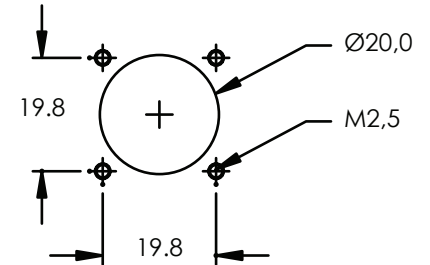
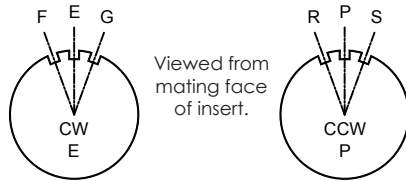
Amphenol Sine Systems		Intercontec	
Ø1.0mm Contact			
Gold - 10u"	Plating	Gold	
Contacts are Intermateable but not Interchangeable			

Amphenol Sine Systems		Intercontec	
Ø2.0mm Contact			
Gold - 10u"	Plating	Gold	
Contacts are Intermateable but not Interchangeable			

M23 TECHNICAL SPECIFICATIONS



Coding Keys



**ALL M23 A SERIES INSERTS COME WITH 3 CODING KEYS.**

To order the connector with the correct insert coding, change the 6th digit in the catalog part number per the coding letter desired (see figure above).

Examples: MA1CAE1200 for "E" coding, MA1CAF1200 for "F" coding, MA1CAG1200 for "G" coding, MA1CAP1200 for "P" coding, MA1CAR1200 for "R" coding, MA1CAS1200 for "S" coding

If you are ordering an "E" type connector, coding options are only: E, F & G. Normal coding is identified as "E".  
 If you are ordering a "P" type connector, coding options are only: P, R & S. Normal coding is identified as "P".

**MOUNTING HOLE PATTERN:**

SAME FOR M23 A & B SERIES, AMPHENOL SINE SYSTEMS & INTERCONTEC

**M23 TECHNICAL SPECIFICATIONS**

**Connector Temperature Rise test Results**

**TEST 1 12 pin - Sine Plug to Sine Recp**

Current (A)	Temperature		
	Connector (tb)	Ambient (tu)	tb-tu
0	0	0	0
2	25.9	23.1	2.8
4	35	24.8	10.2
6	48.7	27.3	21.4
8	68.2	30.9	37.3
10	92.5	35.8	56.7
12	124.9	42.3	82.6

**TEST 14 12 pin - InterContec Plug to InterContec Recp**

Current (A)	Temperature		
	Connector (tb)	Ambient (tu)	tb-tu
0	0	0	0
2	26.9	22.7	4.2
4	38.3	23.7	14.6
6	58.3	26.9	31.4
8	84.9	31.3	53.6
10	117.3	36.3	81
12	161.8	44.7	117.1

**TEST 3 17 pin - Sine Plug to Sine Recp**

Current (A)	Temperature		
	Connector (tb)	Ambient (tu)	tb-tu
0	0	0	0
2	27.1	23.5	3.6
4	37.7	25.3	12.4
6	55	28.6	26.4
8	78.8	33.1	45.7
9	93.8	36.1	57.7

**TEST 15 17 pin - InterContec Plug to InterContec Recp**

Current (A)	Temperature		
	Connector (tb)	Ambient (tu)	tb-tu
0	0	0	0
2	28.2	23.2	5
4	42.8	25	17.8
6	68.5	29.6	38.9
8	103	36	67
9	123.6	39.9	83.7

**TEST 10 9 pin - Sine Plug to Sine Recp**

Current (A)	Temperature		
	Connector (tb)	Ambient (tu)	tb-tu
0	25	23.1	1.9
5	24.9	22.8	2.1
10	31	23.7	7.3
15	41	25.4	15.6
20	55.5	28.3	27.2
30	96.5	35.7	60.8
35	125.2	41.4	83.8

**TEST 13 9 pin - InterContec Plug to InterContec Recp**

Current (A)	Temperature		
	Connector (tb)	Ambient (tu)	tb-tu
0	21.6	21.6	0
5	24	22.3	1.7
10	31	23.4	7.6
15	44.1	25.1	19
20	59.1	26.8	32.3
30	103.5	33.7	69.8
35	131.6	38.5	93.1

Operating Temperature	<p><b>Amphenol and Intercontec</b> are Equivalent.</p>
Degree Of Protection	
Maximum Voltage	
Maximum Current	
Contact Resistance	
Mating Cycles	
Pollution Degree	

**M40 TECHNICAL SPECIFICATIONS**

Amphenol Sine Systems		Intercontec	
Ø2.0mm Contact (M40)			
Gold - 10u"	Plating	Gold	
Contacts are Intermateable but not Interchangeable			

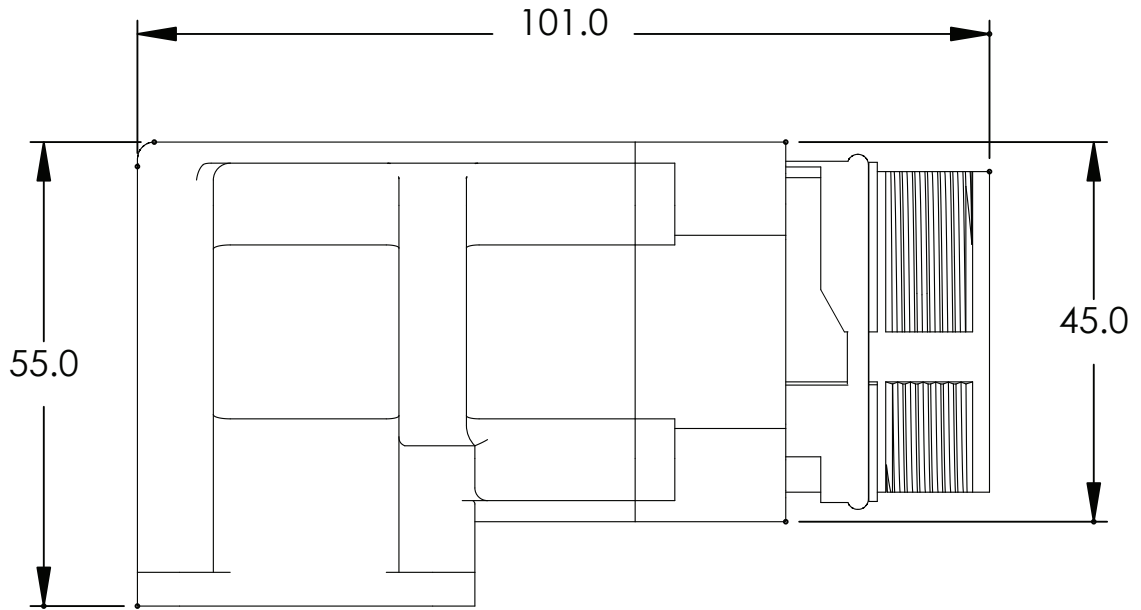
Amphenol Sine Systems		Intercontec	
Ø3.6mm Contact (M40)			
Gold - 10u"	Plating	Gold	
Contacts are Intermateable but not Interchangeable			



M40 TECHNICAL SPECIFICATIONS

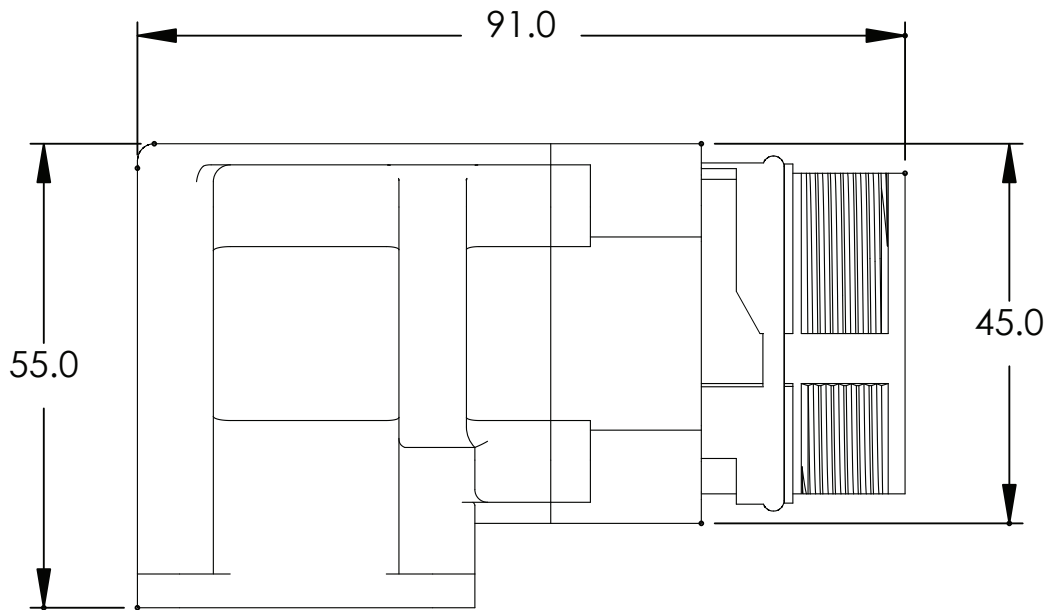
Amphenol Sine Systems

M40 C Series



Intercontec

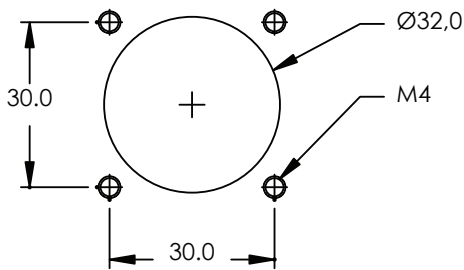
M40 C Series



**M40 TECHNICAL SPECIFICATIONS**

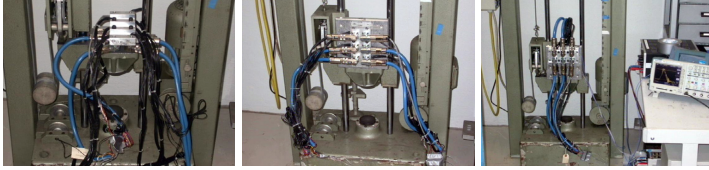
**Contact (Ø3.6mm) Temperature Rise Test Results**

Ø3.6mm M40 Contact with 8AWG Wire	Ambient °C	3.6mm Contact Current	Amphenol Sine Systems			Intercontec			Difference
			Sine °C	C-UL Max Temp Target	Pass/Fail ?	Intercontec °C	C-UL Max Temp Target	Pass/Fail ?	
Sample 1 Test 1	22.9	20A	25.9	52.9	Pass	26.3	52.9	Pass	0.4
	22.9	25A	28.1	52.9	Pass	29	52.9	Pass	0.9
	22.9	30A	30.5	52.9	Pass	32.1	52.9	Pass	1.6
	22.9	35A	33.6	52.9	Pass	35.7	52.9	Pass	2.1
	22.9	40A	37	52.9	Pass	39.4	52.9	Pass	2.4
	22.9	45A	40.5	52.9	Pass	44.2	52.9	Pass	3.7
	22.9	50A	44.8	52.9	Pass	49.4	52.9	Pass	4.6
	22.9	55A	49.1	52.9	Pass	54.6	52.9	Fail	5.5
	22.9	60A	54.3	52.9	Fail	60.2	52.9	Fail	5.9
	22.9	61.3A	55.6	52.9	Fail	62	52.9	Fail	6.4



**MOUNTING HOLE PATTERN:**  
 SAME FOR M40 C SERIES,  
 AMPHENOL SINE SYSTEMS  
 & INTERCONTEC

## 3RD PARTY PRODUCT TESTING



### Shock Test #1

This test is conducted for the purpose of determining the suitability of connectors and connector assemblies when subjected to shocks such as those that may be expected as a result of rough handling, transportation and operational conditions. This test differs from other shock tests in that the design of the shock machine is not specified, but the half-sine and sawtooth shock pulse waveforms are specified with tolerances. The frequency response of the measuring systems is also specified with tolerances.

#### Products Tested:

8 pos. Plug (MB1CKN0800), RockSolid™ Contacts (SC000013, 14) and FlexGrip™ Strain Relief (MB4FSR-B10.3)

#### Test Requirement:

Standard: GJB1217-2004 (China) / EIA-364-27B Condition A (USA)

#### Test Method A: Shock

Sample condition: Connectors in normal conditions before testing.  
Pulse Shape: Half Sine  
Peak Acceleration: 49g  
Pulse Duration: 11ms  
Shock Direction: ± X, ± Y and ± Z axis  
Number of Shocks: 3X in each direction, (18 times total)

**Test Result:** No intermittent disconnection occurred during the test.

**Test Conclusion:** Pass

### Shock Test #2

This test is conducted for the purpose of determining the suitability of connectors and connector assemblies when subjected to shocks such as those that may be expected as a result of rough handling, transportation and operational conditions. This test differs from other shock tests in that the design of the shock machine is not specified, but the half-sine and sawtooth shock pulse waveforms are specified with tolerances. The frequency response of the measuring systems is also specified with tolerances.

#### Products Tested:

12 pos. Mated Set (Plug: MA1CAE1200 w/ RockSolid™ Contacts and Recept: MA1RAE1200);

17 pos. Mated Set (Plug: MA1CAE1700 w/ RockSolid™ Contacts and Recept: MA1RAE1700);

8 pos. Mated Set (Plug: MB1CKN0800 w/ RockSolid™ Contacts and Recept: MB1RJN0800)

12 pos. Mated Set (Plug: ASTA021FR01610035000 and Recept: EGA052MR04000012000);

17 pos. Mated Set (Plug: ASTA035FR01610035000 and Recept: EGA113MR04000012000);

8 pos. Mated Set (Plug: BSTA078FR05580047000 and Recept: BEDC089MR1300005000)

#### Test Requirement:

According to the standard: MIL-STD202G, Test Condition A/IEC 60068-2-28 Eb

#### Test Condition: Shock

Pulse Shape: Half sine  
Acceleration: 50g  
Pulse Duration: 11ms  
Shock Direction: ± X, ± Y and ± Z axis  
Number of Shocks: 3X in each direction, (18 times total)

**Test Result:** No discontinuity > 1µ sec.  
No locking or unmating  
No loose parts.

**Test Conclusion:** Pass

### Sinusoidal Vibration Test #1

This standard test procedure details a method to assess the ability of electrical connector components to withstand specified severities of vibration. The object of this test is to determine the effects of vibration within the predominant or random vibration frequency ranges and magnitudes that may be encountered during the life of the connector.

#### Products Tested:

12 pos. Plug (MA1CAE1200), RockSolid™ Contacts (SC000013) and FlexGrip™ Strain Relief (MAFSR-A12.8)

#### Test Requirement and Acceptance Criteria:

Standard: GJB1217-2005 (China) / EIA-364-28D Method IV (USA)

#### Test Method IV: Vibration

**Sample condition:** Connectors in normal conditions before testing.  
(Ambient Temp: 23°C to 24°C; Relative Humidity: 53% to 62%)

Sweep Frequency: (10~55~2000) Hz  
Amplitude: 1.5mm at (10~55) Hz  
Acceleration: 19.6g at (55~2000) Hz  
Vibration Axis: X, Y AND Z axis  
Test Time: 4 hour / axis  
Sweep Rate: 1 oct/min

**Test Result:** No intermittent disconnection occurred during the test.

**Test Conclusion:** Pass

### Sinusoidal Vibration Test #2

This standard test procedure details a method to assess the ability of electrical connector components to withstand specified severities of vibration. The object of this test is to determine the effects of vibration within the predominant or random vibration frequency ranges and magnitudes that may be encountered during the life of the connector.

#### Products Tested:

12 pos. Mated Set (Plug: MA1CAE1200 w/ RockSolid™ Contacts and Recept: MA1RAE1200)

17 pos. Mated Set (Plug: MA1CAE1700 w/ RockSolid™ Contacts and Recept: MA1RAE1700)

8 pos. Mated Set (Plug: MB1CKN0800 w/ RockSolid™ Contacts and Recept: MB1RJN0800)

12 pos. Mated Set (Plug: ASTA021FR01610035000 and Recept: AEGA052MR04000012000)

17 pos. Mated Set (Plug: ASTA035FR01610035000 and Recept: AEGA113MR04000012000)

8 pos. Mated Set (Plug: BSTA078FR05580047000 and Recept: BEDC089MR1300005000)

#### Test Requirement and Acceptance Criteria: Standard: IEC 60068-2-6 Fc

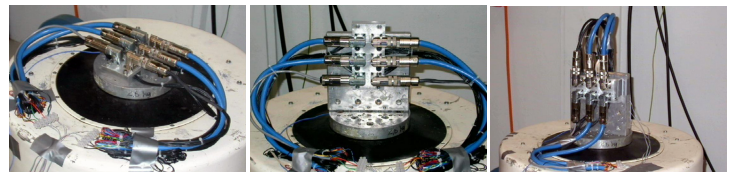
Test Condition: Vibration, Endurance (sine)

Frequency: (10~2000~10) Hz  
Double Amplitude: 0.060 in.  
Acceleration: 20g  
Linearly Sweep: 12 sweeps @ 20 min.  
(4 hours per axis)

Vibration Axis: X, Y AND Z axis

**Test Result:** No discontinuity > 1µ sec.

**Test Conclusion:** Pass



Kate Wilton, Program Development Manager

Direct: 1.863.676.9416, Ext. 420 / Toll Free: 1.800.394.7732 Ext. 8668

kate@sineco.com