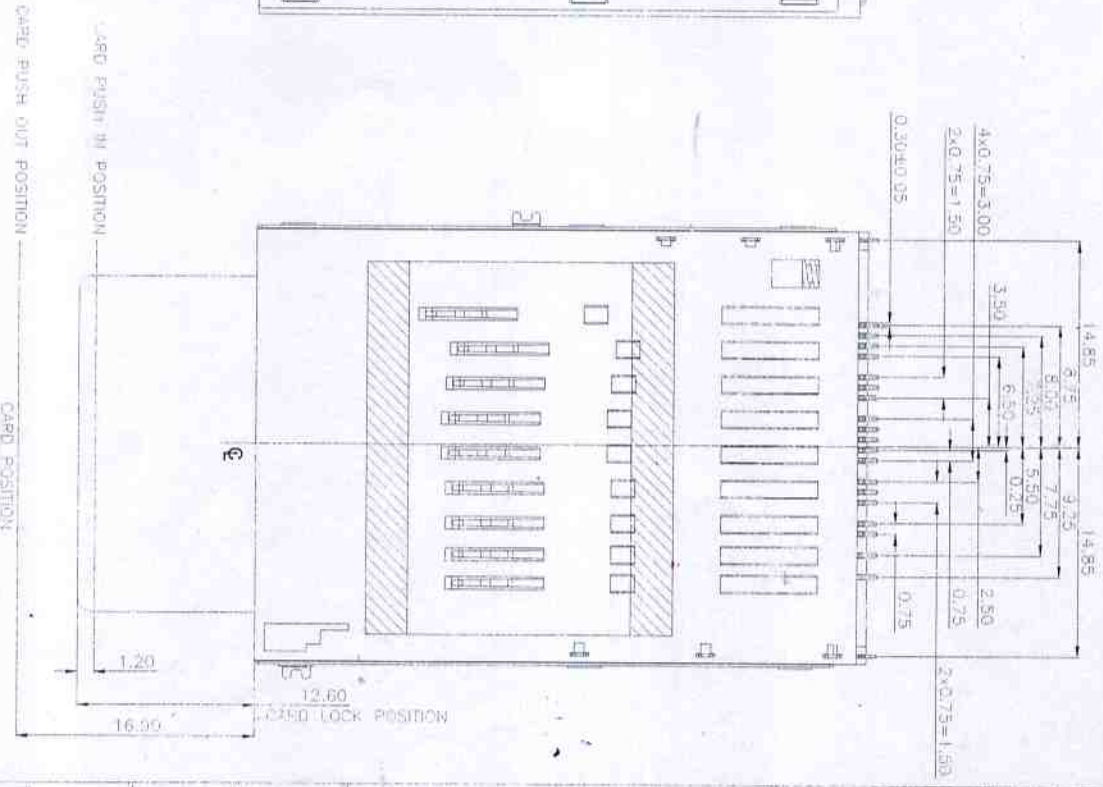
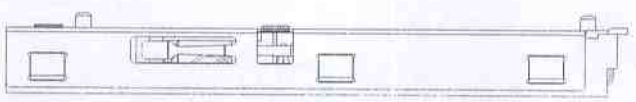
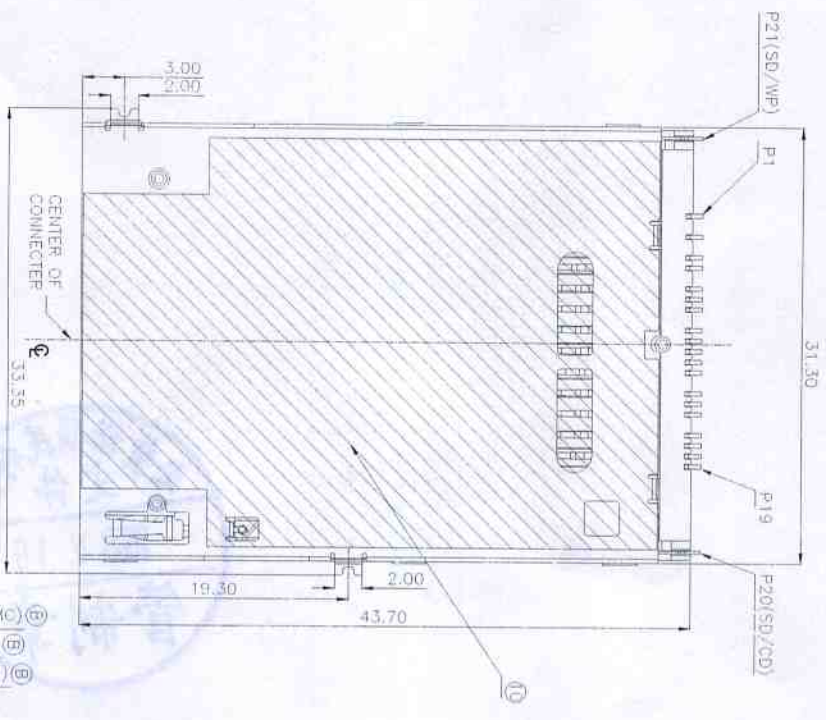
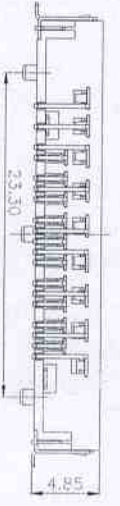
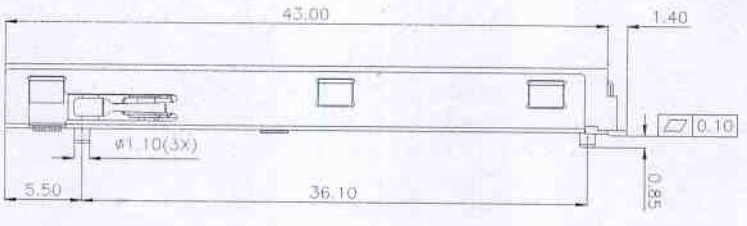


阅读申明

- 1.本站收集的数据手册和产品资料都来自互联网，版权归原作者所有。如读者和版权方有任何异议请及时告之，我们将妥善解决。
- 2.本站提供的中文数据手册是英文数据手册的中文翻译，其目的是协助用户阅读，该译文无法自动跟随原稿更新，同时也可能存在翻译上的不当。建议读者以英文原稿为参考以便获得更精准的信息。
- 3.本站提供的产品资料，来自厂商的技术支持或者使用者的心得体会等，其内容可能存在描述上的差异，建议读者做出适当判断。
- 4.如需与我们联系，请发邮件到marketing@iczoom.com，主题请标有“数据手册”字样。

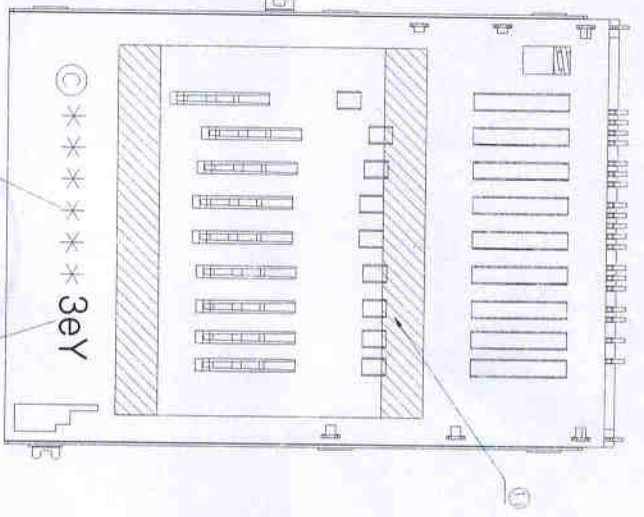
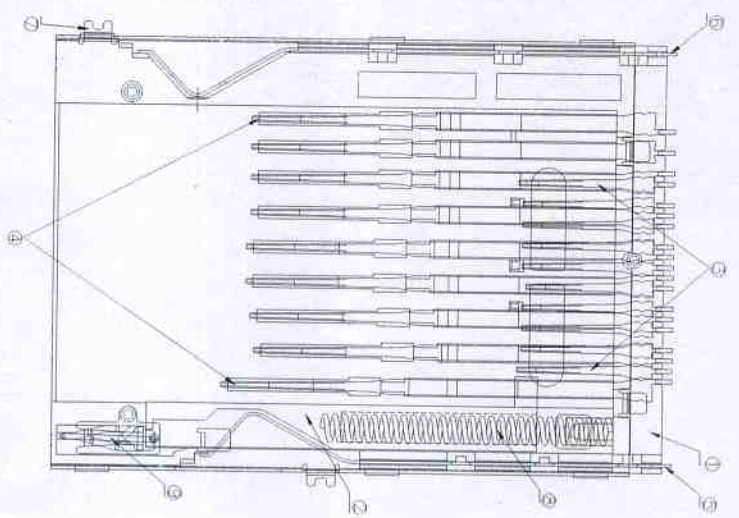
Read Statement

1. The datasheets and other product information on the site are all from network reference or other public materials, and the copyright belongs to the original author and original published source. If readers and copyright owners have any objections, please contact us and we will deal with it in a timely manner.
2. The Chinese datasheets provided on the website is a Chinese translation of the English datasheets. Its purpose is for reader's learning exchange only and do not involve commercial purposes. The translation cannot be automatically updated with the original manuscript, and there may also be improper translations. Readers are advised to use the English manuscript as a reference for more accurate information.
3. All product information provided on the website refer to solutions from manufacturers' technical support or users the contents may have differences in description, and readers are advised to take the original article as the standard.
4. If you have any questions, please contact us at marketing@iczoom.com and mark the subject with "Datasheets" .



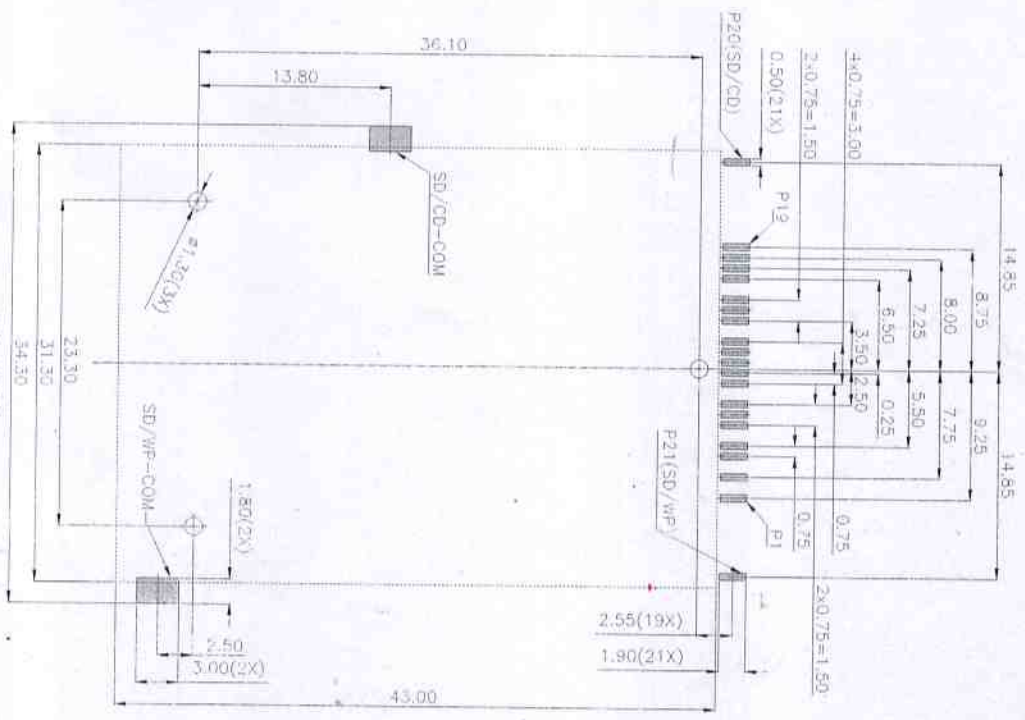
REV	DATE	DESCRIPTION	DATE
B	2008/12/10	MODIFY (B)	2008/12/10
C	2008/12/10	MODIFY (C)	2008/12/10

GENERAL	TOLERANCE	FILE NO.	19100572	PART NO.	1910057889	DRAWN	Shirley Gao	MATERIAL	DATE	SCALE	1:1
1. MATERIAL: SEE TABLE	X ± 0.30	19100572	19100572	1910057889	1910057889	Shirley Gao	Shirley Gao	Amphenol Shoufmin Industries	2008/12/10	SCALE	1:1
2. PLATING: SEE TABLE	X ± 1.5*	19100572	19100572	1910057889	1910057889	Shirley Gao	Shirley Gao	Amphenol Shoufmin Industries	2008/12/10	SCALE	1:1
3. DATE CODE: *****	X ± 1.2*	19100572	19100572	1910057889	1910057889	Shirley Gao	Shirley Gao	Amphenol Shoufmin Industries	2008/12/10	SCALE	1:1
4. ROHS COMPLIANT PRODUCT	X ± 0.25	19100572	19100572	1910057889	1910057889	Shirley Gao	Shirley Gao	Amphenol Shoufmin Industries	2008/12/10	SCALE	1:1
5. ELECTRICAL CHARACTERISTICS:	XX ± 1*	19100572	19100572	1910057889	1910057889	Shirley Gao	Shirley Gao	Amphenol Shoufmin Industries	2008/12/10	SCALE	1:1
6. MECHANICAL CHARACTERISTICS:	XX ± 0.25	19100572	19100572	1910057889	1910057889	Shirley Gao	Shirley Gao	Amphenol Shoufmin Industries	2008/12/10	SCALE	1:1
7. ENVIRONMENTAL:	XX ± 0.25	19100572	19100572	1910057889	1910057889	Shirley Gao	Shirley Gao	Amphenol Shoufmin Industries	2008/12/10	SCALE	1:1
8. OPERATING TEMPERATURE: -20°C~60°C	XX ± 0.25	19100572	19100572	1910057889	1910057889	Shirley Gao	Shirley Gao	Amphenol Shoufmin Industries	2008/12/10	SCALE	1:1



Pin assignments:

Pin No.	FUNCTION	SD/MAC	MS
P1	SD-DAT1	8P	
P2	SD-DAT0	7P	
P3	SD-GND	6P	
P4	MS-GND		1P
P5	MS-BS		2P
P6	SD-CLK	5P	
P7	MS-DAT1		3P
P8	MS-DAT0		4P
P9	SD-VCC	4P	
P10	MS-DAT2		5P
P11	SD-GND	3P	
P12	MS-INS		6P
P13	MS-DAT3		7P
P14	SD-CMD	3P	
P15	MS-SCLK		8P
P16	MS-VCC		9P
P17	SD-DAT3	1P	
P18	MS-GND		10P
P19	SD-DAT2	9P	



ECB LAYOUT
Note: All tolerance is ±0.05

ITEM	TITLE	MATERIAL	PLATING
1	Housing	LOW CRYSTAL POINT COLOR: BRN/BLACK	
2	Slide	NON-GLASS PIER PLATE COLOR: BLACK/BLACK-0	
3	MS terminal	PROPOSE BRONZE	SOLD 15 MICRON厚 PLATED ON CONTACT PART IN PLATED 120 MICRON厚 ON SOLDER AREA
4	SD terminal	PROPOSE BRONZE	SOLD 15 MICRON厚 PLATED ON CONTACT PART IN PLATED 120 MICRON厚 ON SOLDER AREA
5	CD terminal	PROPOSE BRONZE	SOLD 1 MICRON厚 PLATED ON CONTACT AREA PART IN PLATED 120 MICRON厚 ON SOLDER AREA
6	WE terminal	PROPOSE BRONZE	SOLD 1 MICRON厚 PLATED ON CONTACT AREA PART IN PLATED 120 MICRON厚 ON SOLDER AREA
7	Metral Shell	STAINLESS STEEL	MODEL UNDERPLATING OVER ALL
8	Coil Spring	SW66	NICKEL PLATED OVERALL
9	Link	STAINLESS STEEL	
10	Mylar-1	POLYESTER	
11	Mylar-2	POLYESTER	

GENERAL TOLERANCE FILE NO. 10100578

PART NO. 1010057889 DRAWN Shirley Gao

MATERIAL DATE 2008/12/10 SCALE 1:1

REV. 1	DATE 2008/12/10	SCALE 1:1
REV. 2	DATE	SCALE

TITLE 5 in.1 P/P CARO CONN. BOTTOM MOUNT EVEN TYPE SHEET 2 OF 2 APPROVED

Amphenol Shouhain Industry

REV.	EQUIV.	MODIF. COMMENT	DATE
B	EC	05093.051	2008/09/24
C	ES	00312.04E	2008/12/10

June 19, 08
Shirley Gao