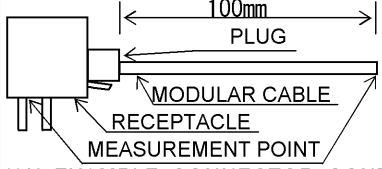


阅读申明

- 1.本站收集的数据手册和产品资料都来自互联网，版权归原作者所有。如读者和版权方有任何异议请及时告之，我们将妥善解决。
- 2.本站提供的中文数据手册是英文数据手册的中文翻译，其目的是协助用户阅读，该译文无法自动跟随原稿更新，同时也可能存在翻译上的不当。建议读者以英文原稿为参考以便获得更精准的信息。
- 3.本站提供的产品资料，来自厂商的技术支持或者使用者的心得体会等，其内容可能存在描述上的差异，建议读者做出适当判断。
- 4.如需与我们联系，请发邮件到marketing@iczoom.com，主题请标有“数据手册”字样。

Read Statement

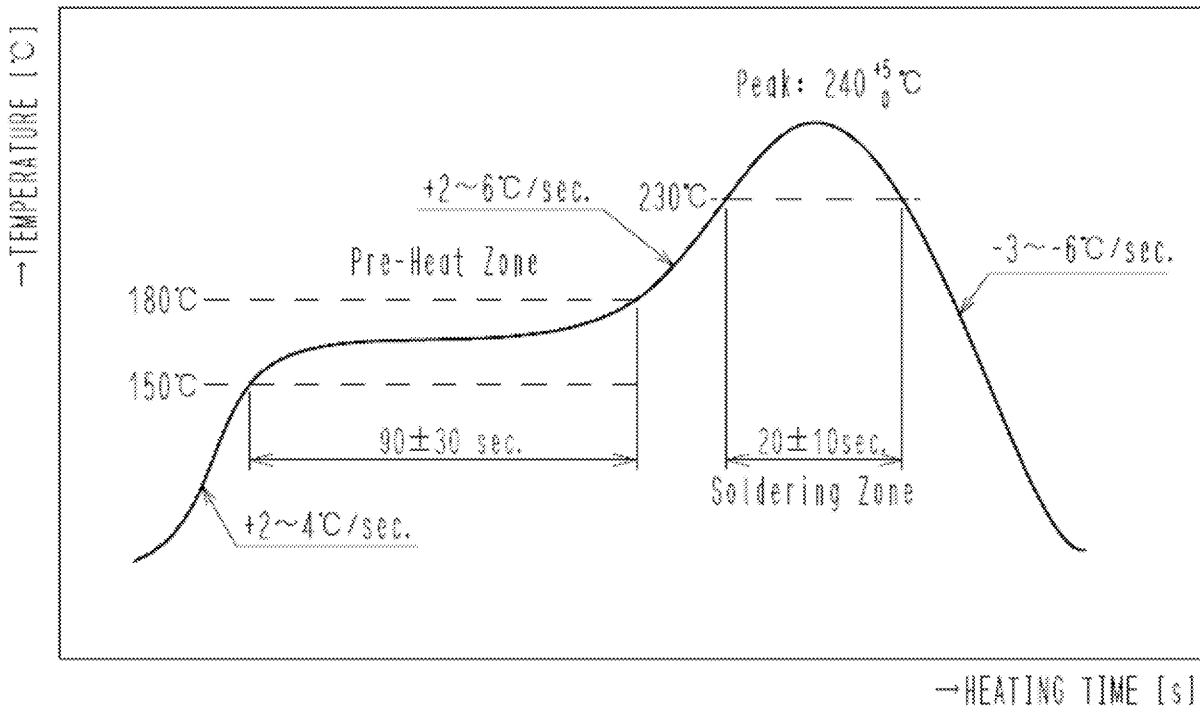
1. The datasheets and other product information on the site are all from network reference or other public materials, and the copyright belongs to the original author and original published source. If readers and copyright owners have any objections, please contact us and we will deal with it in a timely manner.
2. The Chinese datasheets provided on the website is a Chinese translation of the English datasheets. Its purpose is for reader's learning exchange only and do not involve commercial purposes. The translation cannot be automatically updated with the original manuscript, and there may also be improper translations. Readers are advised to use the English manuscript as a reference for more accurate information.
3. All product information provided on the website refer to solutions from manufacturers' technical support or users the contents may have differences in description, and readers are advised to take the original article as the standard.
4. If you have any questions, please contact us at marketing@iczoom.com and mark the subject with "Datasheets" .

APPLICABLE STANDARD					
RATING	OPERATING TEMPERATURE RANGE	-25 °C TO +80 °C	STORAGE TEMPERATURE RANGE	-25 °C TO +60 °C	
	VOLTAGE	125 V AC	OPERATING HUMIDITY RANGE	95 % MAX.	
	CURRENT	500mA	APPLICABLE CABLE	—	
SPECIFICATIONS					
ITEM	TEST METHOD		REQUIREMENTS	QT	AT
CONSTRUCTION					
GENERAL EXAMINATION	VISUALLY AND BY MEASURING INSTRUMENT.		ACCORDING TO DRAWING.	X	X
MARKING	CONFIRMED VISUALLY.			X	X
ELECTRIC CHARACTERISTICS					
CONTACT RESISTANCE	100 mA MAX (DC OR 1000 Hz AC). 		60 mΩ MAX.	X	X
INSULATION RESISTANCE	100 V DC.		100 MΩ MIN.	X	X
VOLTAGE PROOF (CONTACT TO CONTACT)	500 V AC FOR 1 min.		NO FLASHOVER OR BREAKDOWN.	X	X
MECHANICAL CHARACTERISTICS					
MECHANICAL OPERATION	5000 TIMES INSERTIONS AND EXTRACTIONS.		1) CONTACT RESISTANCE: 90 mΩ MAX. 2) NO DAMAGE, CRACK AND LOOSENESS OF PARTS.	X	—
VIBRATION	FREQUENCY 10 TO 55 Hz SINGLE AMPLITUDE 0.75 mm, AT 2 HOURS FOR 3 DIRECTIONS.		1) NO ELECTRICAL DISCONTINUITY OF 5 μs. 2) CONTACT RESISTANCE: 90 mΩ MAX. 3) NO DAMAGE, CRACK AND LOOSENESS OF PARTS.	X	—
SHOCK	490 m/s ² DIRECTIONS OF PULSE 11 ms AT 3 TIMES FOR 3 DIRECTIONS.			X	—
ENVIRONMENTAL CHARACTERISTICS					
DAMP HEAT, CYCLIC	EXPOSED AT +40 °C, 90 TO 95 % , 500 h		1) CONTACT RESISTANCE: 90 mΩ MAX. 2) INSULATION RESISTANCE: 1 MΩ MIN. (AT HIGH HUMIDITY) 10 MΩ MIN. (AT DRY) 3) NO DAMAGE, CRACK AND LOOSENESS OF PARTS.	X	—
RAPID CHANGE OF TEMPERATURE	TEMPERATURE -55±3 → 5 TO 35 → 85±2 → 5 TO 35 °C TIME 30 +5/0 → 5 MAX. → 30 +5/0 → 5 MAX. min UNDER 5 CYCLES.		1) CONTACT RESISTANCE: 90 mΩ MAX. 2) INSULATION RESISTANCE: 100 MΩ MIN. 3) NO DAMAGE, CRACK AND LOOSENESS OF PART	X	—
CORROSION SALT MIST	EXPOSED IN 5 % SALT WATER SPRAY FOR 48 h.		1) CONTACT RESISTANCE: 90 mΩ MAX. 2) NO HEAVY CORROSION.	X	—
	COUNT	DESCRIPTION OF REVISIONS	DESIGNED	CHECKED	DATE
△					
REMARK			APPROVED	KN. ICHIKAWA	11. 01. 13
			CHECKED	KN. ICHIKAWA	11. 01. 13
			DESIGNED	HN. ANDO	11. 01. 11
Unless otherwise specified, refer to JIS C 5402.			DRAWN	HN. ANDO	11. 01. 11
Note QT:Qualification Test AT:Assurance Test X:Applicable Test			DRAWING NO.		ELC4-127281-00
HRS	SPECIFICATION SHEET		PART NO.	TM25RS-5CNA-88	
	HIROSE ELECTRIC CO., LTD.		CODE NO.	CL222-2967-7-00	△ 1/2

SPECIFICATIONS


ITEM	TEST METHOD	REQUIREMENTS	QT	AT
------	-------------	--------------	----	----

RECOMMENDED TEMPERATURE PROFILE (REFLOW SOLDERING, MOUNTING AREA)

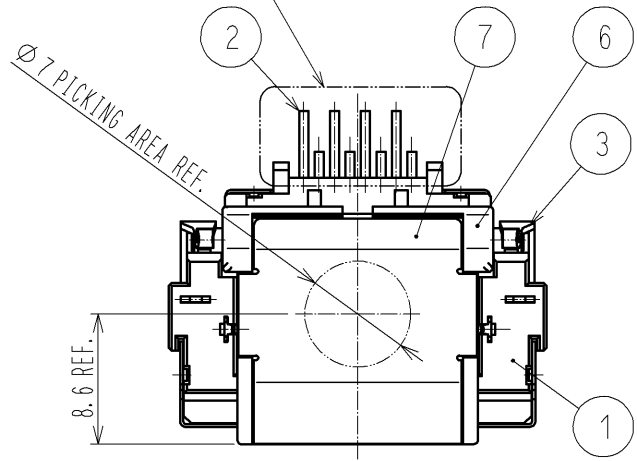
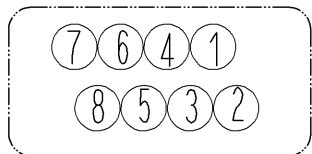


RECOMMENDED MANUAL SOLDERING TEMPERATURE

- TEMPERATURE : 350±10°C
- HEATING TIME : 4sec. MAX.

Note QT:Qualification Test AT:Assurance Test X:Applicable Test		DRAWING NO.	ELC4-127281-00		
HRS	SPECIFICATION SHEET		PART NO.	TM25RS-5CNA-88	
	HIROSE ELECTRIC CO., LTD.		CODE NO	CL222-2967-7-00	 2/2

2 MOUNTING AREA PIN ASSIGNMENT

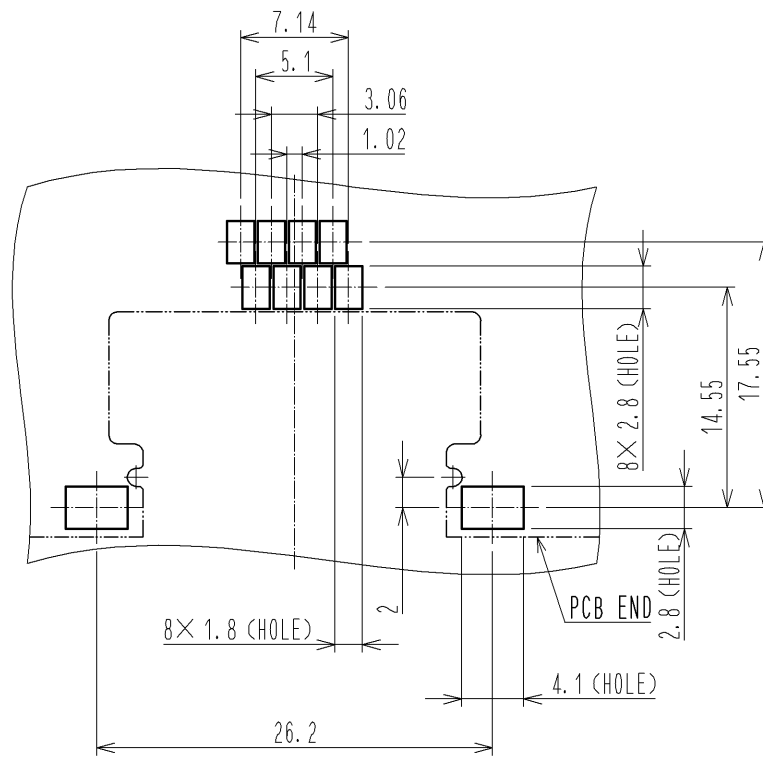
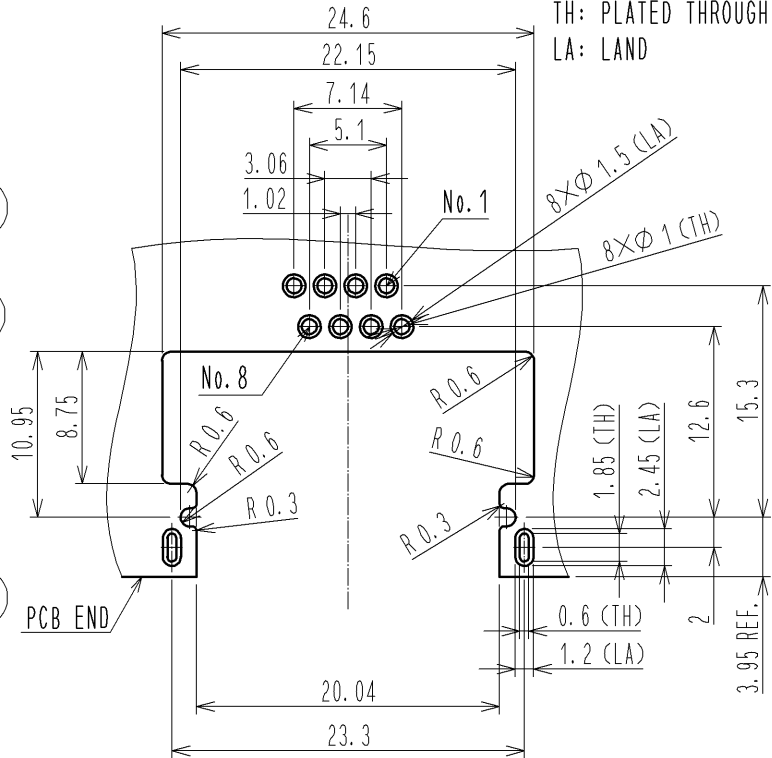


RECOMMENDED PC BORAD PATTERN

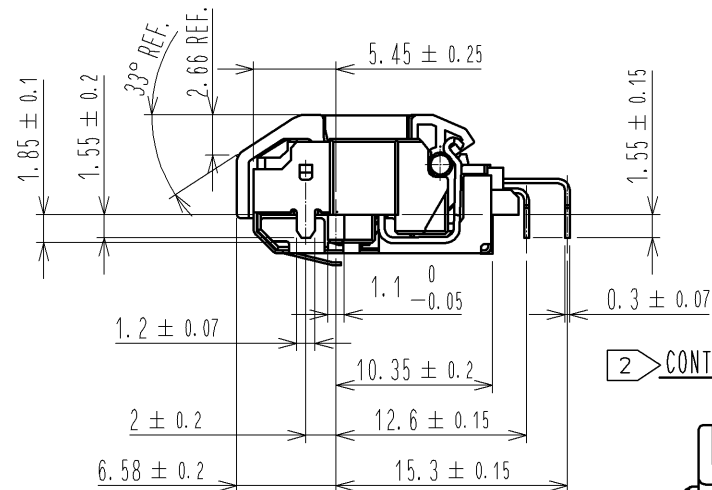
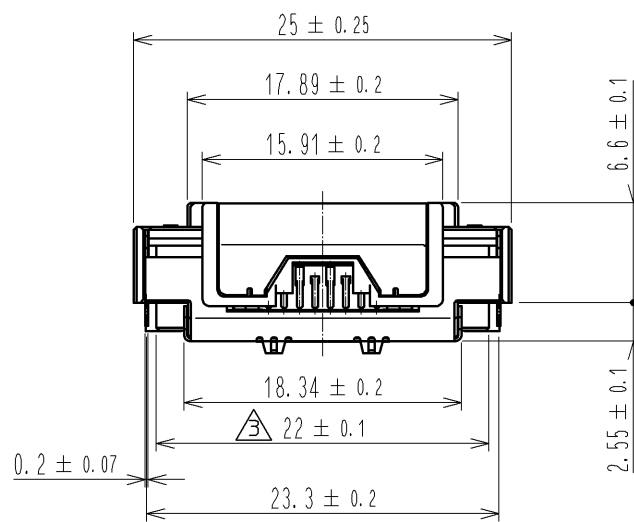
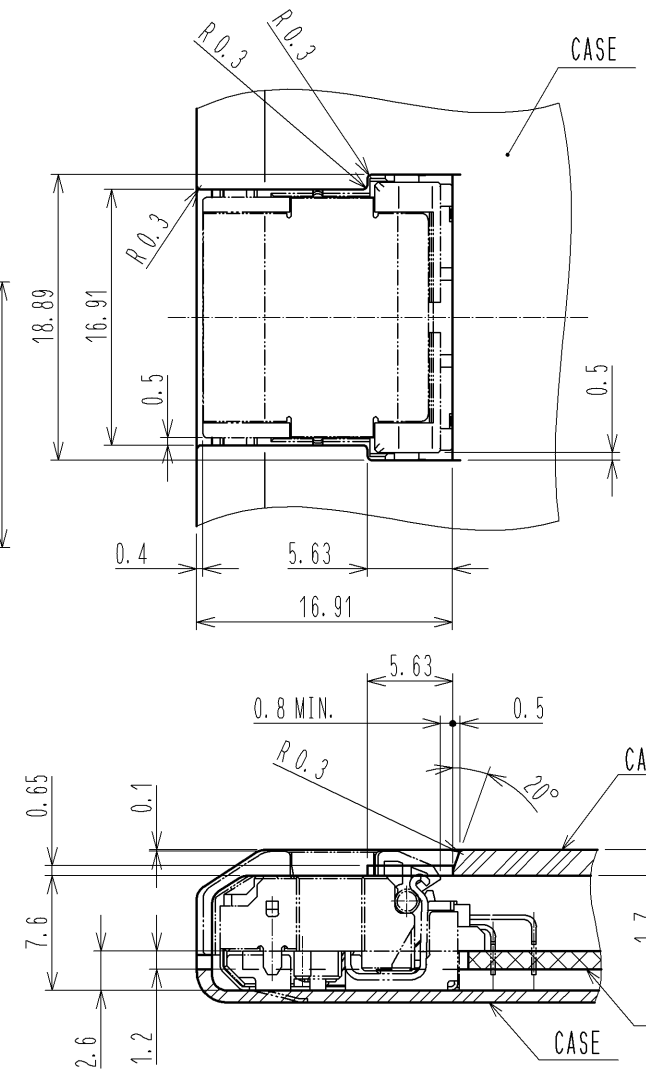
PCB THICKNESS: t1.2
TH: PLATED THROUGH HOLE
LA: LAND

METAL MASK DIMENSIONS FOR REFERENCE

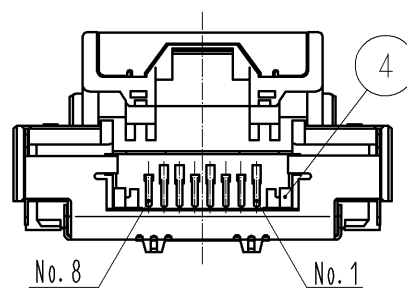
THICKNESS : t0.12



INSTALLATION DIMENSIONS FOR REFERENCE



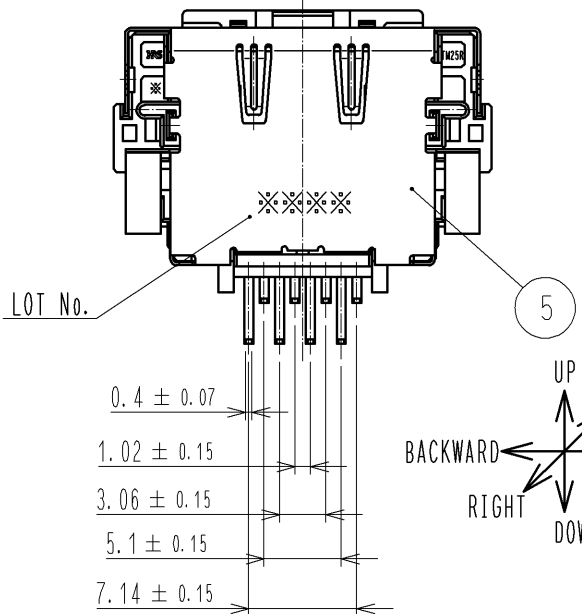
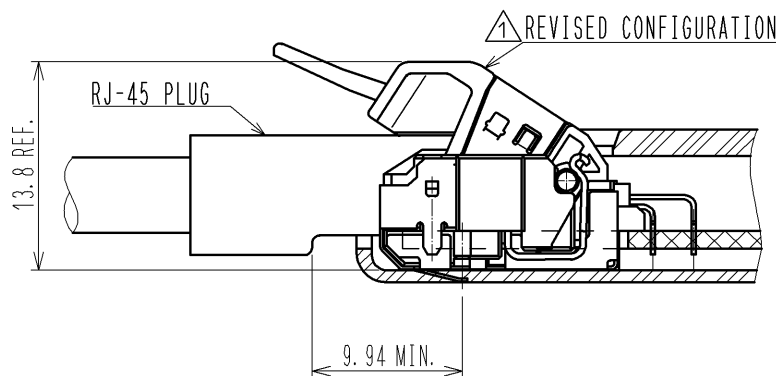
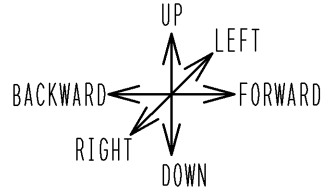
2 CONTACT AREA PIN ASSIGNMENT



NOTES

- 1 WRENCHING STRENGTH IN EACH DIRECTION IS STATED AS FOLLOWS.
BACKWARD AND FORWARD : 60N MIN.
RIGHT AND LEFT : 30MIN.
UP AND DOWN : 15N MIN. MOVING PART SHALL NOT BE COME OFF.
AFTER IT IS EXAMINATED 20 TIMES : 10N MIN.
- 2 PIN ASSIGNMENT IS AS SHOWN IN FIGURE.
PLEASE NOTE THE PIN ASSIGNMENT IS FOR MOUNTING AREA AND DIFFERENT FROM THAT FOR CONTACT AREA.

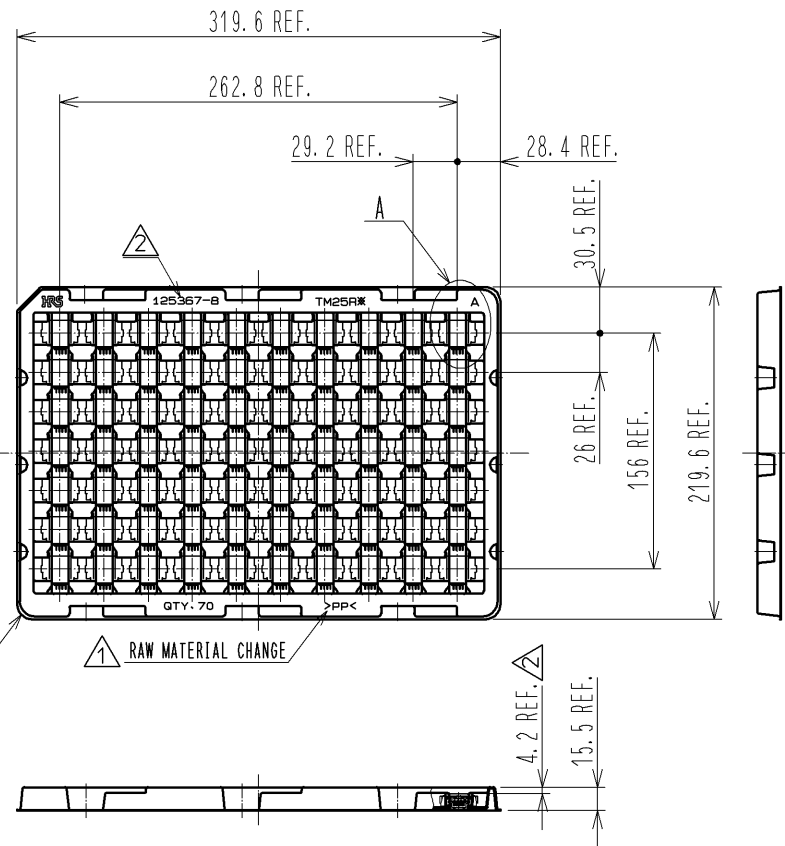
1 WRENCHING DIRECTION



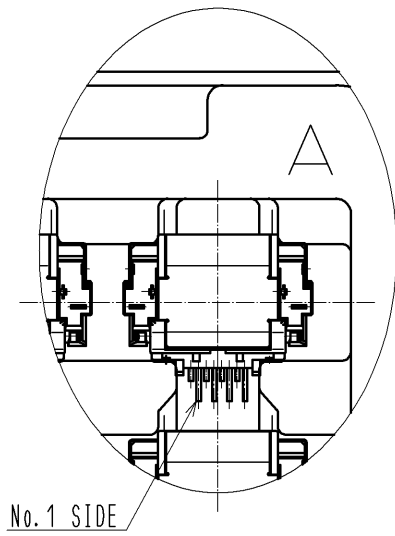
4	STAINLESS STEEL		8	PP	CLEAR, TRAY
3	STAINLESS STEEL		7	STAINLESS STEEL	NICKEL PLATING : 0.1μm MIN.
2	PHOSPHOR BRONZE	CONTACT AREA : GOLD PLATING 0.2μm MIN. MOUNTING AREA : GOLD PLATING 0.03μm MIN. UNDER PLATING : NICKEL PLATING 1μm MIN.	6	POLYAMIDE	BLACK, UL94V-0
1	POLYAMIDE	BLACK, UL94V-0	5	STAINLESS STEEL	BOTH SIDE TIN PLATING 38μm MIN. UNDER PLATING NICKEL PLATING 125μm MIN.
NO.	MATERIAL	FINISH . REMARKS	NO.	MATERIAL	FINISH . REMARKS
UNITS	mm	SCALE	2 : 1	COUNT	1
		DESCRIPTION OF REVISIONS	DESIGNED	CHECKED	DATE
		DIS-E-004428	HN. ANDO	AH. KODAMA	12. 11. 14
APPROVED : KN. ICHIKAWA		11. 01. 13	DRAWING NO. EDC3-127281-00		
CHECKED : KN. ICHIKAWA		11. 01. 13	PART NO. TM25RS-5CNA-88		
DESIGNED : HN. ANDO		11. 01. 13	CODE NO. CL222-2967-7-00		
DRAWN : HN. ANDO		11. 01. 13			

3 PACKING OF TRAY (FREE)

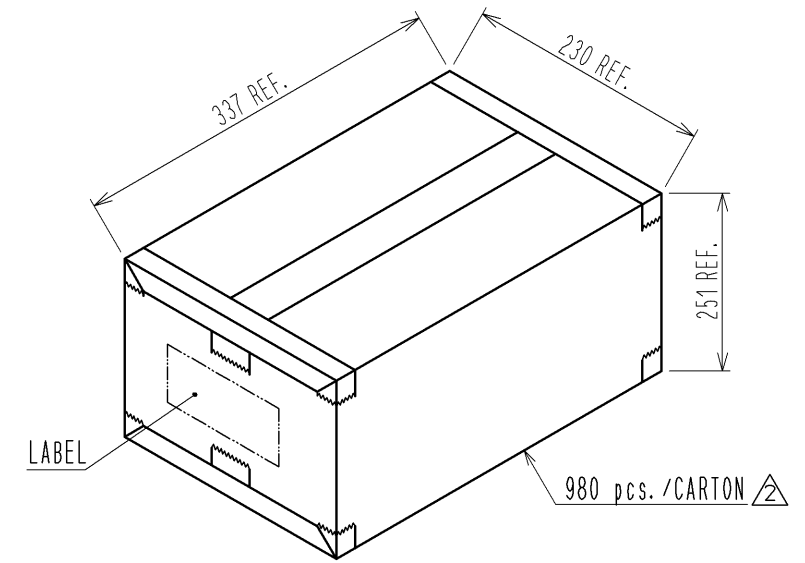
A TYPE 70 pcs./TRAY



A (1:1)

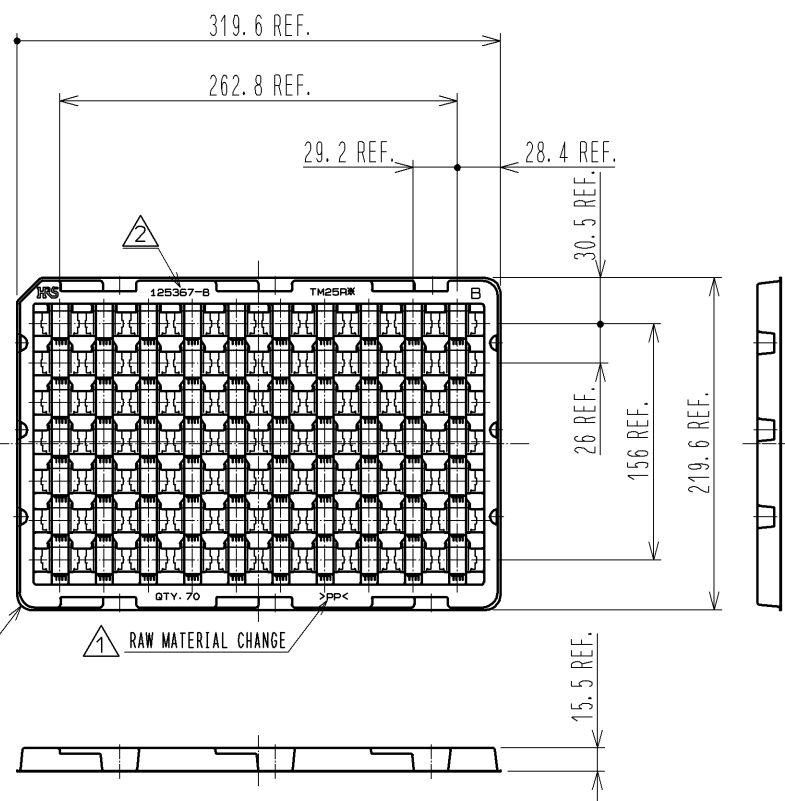


4 PACKING OF CARTON (FREE)



5 4 ACCUMULATION OF TRAY (FREE)

B TYPE 70 pcs./TRAY



CORRUGATED CARDBOARD

PP BAND

CORRUGATED CARDBOARD

EMPTY TRAY : 1 pcs.

TRAY : 7 pcs.

CONTENTS OF A LABEL

荷 札			
得意先名 (Customer Name)		納入場所 (Shipment to)	
注文番号 (P/O No.)	得意先品名 (Customer Part Name)	自販	
受注製番	1箱の入り数 (This box contains)	個 (Qty)	個 (Pcs)
搬出登録 (Delivery Register No.)	得意先数量 (Pcs)		
品目コード	仕様	HRS品名 (Hirose Part Number)	
仕様名			工事番号
特記事項			
二枚分岐	営業コード	MADE IN JAPAN	
ヒロセ電機株式会社 Hirose Electric Co., Ltd.			

- NOTES
- 3 PACKING : 70 pcs./TRAY
 - 4 THE PACKING SPECIFICATION CAN VARY WITH PACKING QUANTITIES.
 - 5 2 SETS OF BANNED TRAYS ARE USED IN CARTON BOX WHEN PRODUCTS ARE STORED MAXIMUM.

HRS	DRAWING NO.	EDC3-127281-00
	PART NO.	TM25RS-5CNA-88
	CODE NO.	CL222-2967-7-00