

## 阅读申明

- 1.本站收集的数据手册和产品资料都来自互联网，版权归原作者所有。如读者和版权方有任何异议请及时告之，我们将妥善解决。
- 2.本站提供的中文数据手册是英文数据手册的中文翻译，其目的是协助用户阅读，该译文无法自动跟随原稿更新，同时也可能存在翻译上的不当。建议读者以英文原稿为参考以便获得更精准的信息。
- 3.本站提供的产品资料，来自厂商的技术支持或者使用者的心得体会等，其内容可能存在描述上的差异，建议读者做出适当判断。
- 4.如需与我们联系，请发邮件到marketing@iczoom.com，主题请标有“数据手册”字样。

## Read Statement

1. The datasheets and other product information on the site are all from network reference or other public materials, and the copyright belongs to the original author and original published source. If readers and copyright owners have any objections, please contact us and we will deal with it in a timely manner.
2. The Chinese datasheets provided on the website is a Chinese translation of the English datasheets. Its purpose is for reader's learning exchange only and do not involve commercial purposes. The translation cannot be automatically updated with the original manuscript, and there may also be improper translations. Readers are advised to use the English manuscript as a reference for more accurate information.
3. All product information provided on the website refer to solutions from manufacturers' technical support or users the contents may have differences in description, and readers are advised to take the original article as the standard.
4. If you have any questions, please contact us at marketing@iczoom.com and mark the subject with "Datasheets" .

# SFP

## Single Port Multi-Port Ganged



Amphenol's SFP connector series is a 20 position connector and cage combo for mounting to a host PCB with a metal cage enclosing the connector. These connectors are similar to the Gigabit Interface Converter Interface (GBIC), but they are smaller in size and operate at much faster data transfer rates.

Amphenol single port and stacked versions are rated up to 10 Gbps. They are available in standard RoHS compliant or non-RoHS compliant versions. The cages are a one-piece construction with enhanced transceiver mating tabs presently available in press-fit version, with solder version and longer or shorter pins available as custom options.

### Applications

- Fibre Channel
- Gigabit Ethernet
- InfiniBand™
- Servers
- Routers
- Storage Devices
- Switches
- Optical Devices
- Networking Devices

## Product Specification for SFP cages and connector system

The interconnect system comprises of an SFP cage assembly which is used with 20 position SFP connectors complying with MSA Agreement INF-8074i.

Availability: 1X1, 1x2, 1x4 and 1x6 cages as well as versions with heat sinks and light pipes, including stacked 2x1 and 2x4 are available. SFP+ and enhanced EMI performance cages also available.

### General Requirements

- RoHS compliant
- Cages are tray packaged or tape and reel (single port)
- Dust cover for front face is available (bulk packed)
- Industry standard EIA-364

### Mechanical Characteristics

Accepts multiple transceivers per INF-8074i  
Durability of 250 mating cycles

### Electrical Characteristics

Hot swappable  
Operating voltage 3.3V at 0.5A maximum  
Cages include spring contacts for superior EMI grounding  
Selected versions provide enhanced EMI shielding through the use of supplementary ground tabs.

### Materials

- Cage: Copper alloy, nickel plated.  
Selected versions available with matte tin over nickel.
- Enhanced EMI versions incorporate stainless steel ground tabs

#### Connectors:

- Contacts: Copper alloy plating - refer to p/n table
- Housing: Glass reinforced lead-free process solder reflow compatible UL94V-0

### Temperature Rating

- Operating Temperature = -55°C to +85°C
- Storage Temperature = -55°C to +105°C

### Packaging

- Tape and reel available for single port, Tray packaging for all sizes.
- Bulk packaged dust covers

[www.sfpconnectors.com](http://www.sfpconnectors.com)

Telephone: (416) 291-4401 Fax: (416) 754-8668 E-Mail: [sales@amphenolcanada.com](mailto:sales@amphenolcanada.com)

All specifications are subject to change without notice.

# SFP

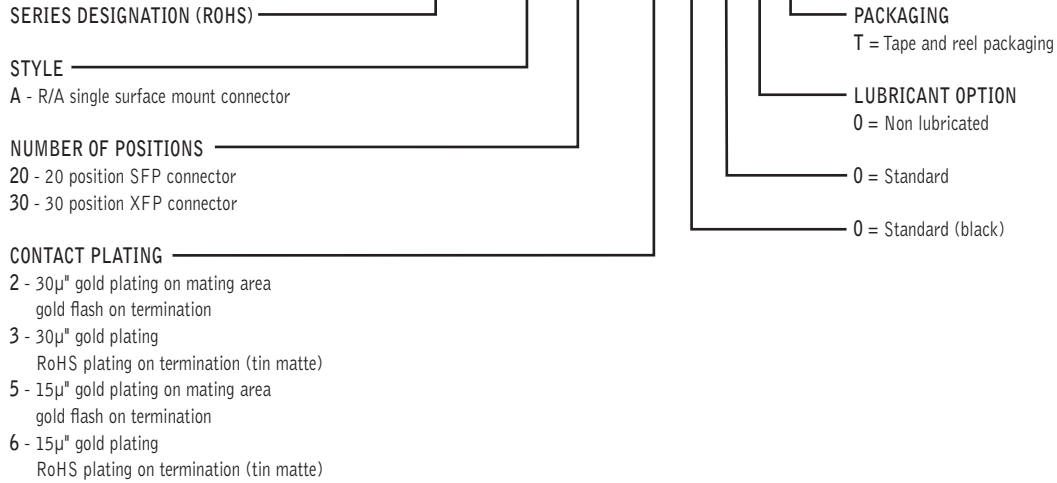
## Single Port Multi-Port Ganged



### Ordering Information

Contact Amphenol for additional options

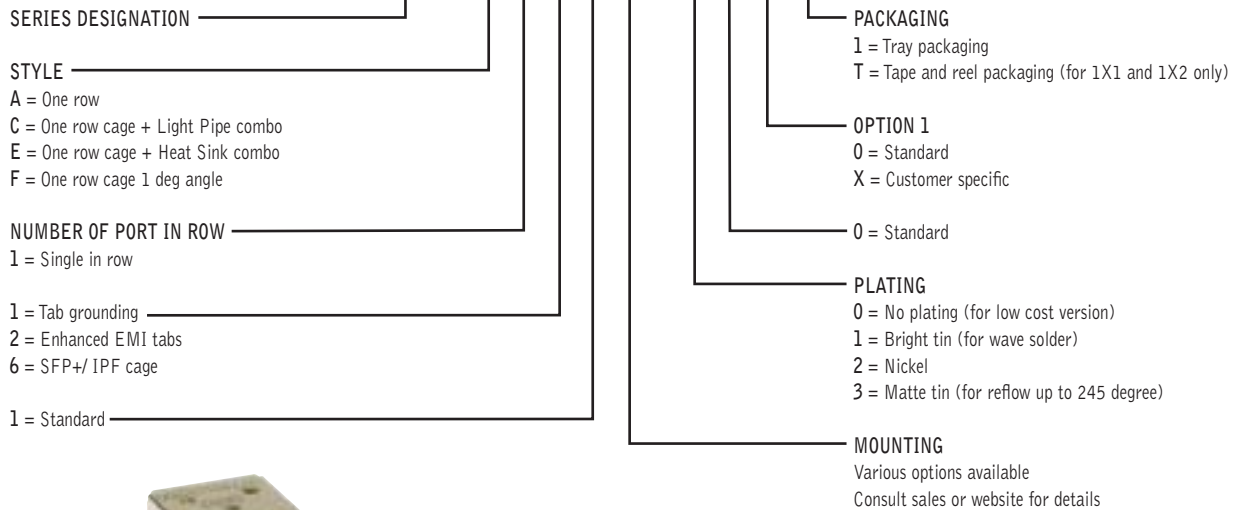
## SFP & XFP Connector UE75 - A X0 - X 0 0 0 T



### Ordering Information

Contact Amphenol for additional options

## SFP Cage U77 - X 1 1 1 X - X 0 X X



[www.sfpconnectors.com](http://www.sfpconnectors.com)

Telephone: (416) 291-4401 Fax: (416) 754-8668 E-Mail: [sales@amphenolcanada.com](mailto:sales@amphenolcanada.com)

All specifications are subject to change without notice.

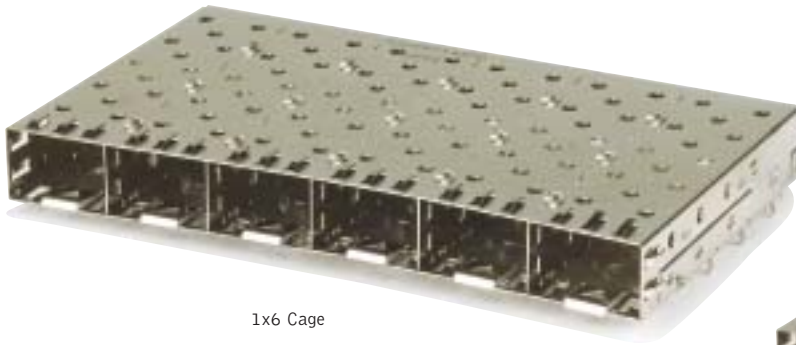
## Ganged & Stacked Options



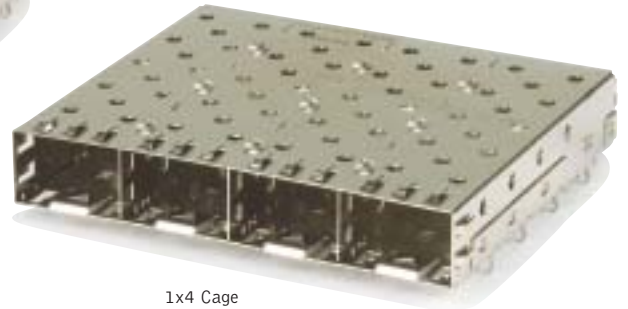
2x1 SFP Cage & Connector Combo



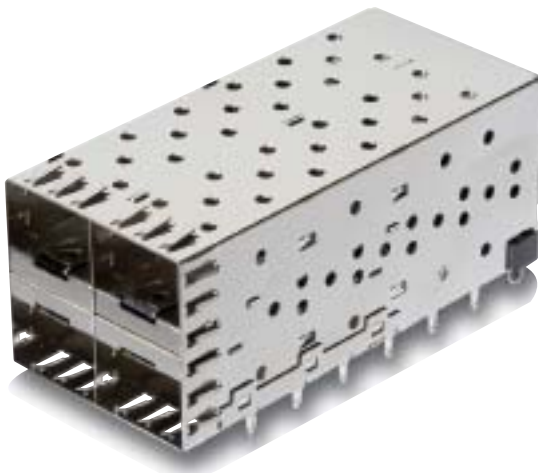
Custom 2x1 SFP Cage & Connector Combo



1x6 Cage



1x4 Cage



2x2 Combo (planned)

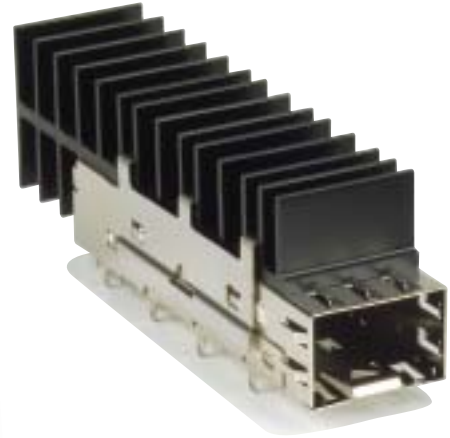


2x4 Combo

## Heat Sinks & Light Pipe Options



1x4 SFP cage with heat sinks



Single port SFP cage with heat sinks



1x4 SFP cage with light pipes



1x6 SFP cage with light pipes

## SFP Combos

### ORDERING INFORMATION

Contact Amphenol for additional options

### SFP Cage & Connector

U X 78 - X X 1 1 X - X X X X X

#### SERIES DESIGNATION

RoHS 5 for Press Fit Pins on connector  
RoHS 6 for Through Hole Pins on connector

#### STYLE

- A - Single connector + cage combo
- B - Stacked connector and cage
- C - Single/stacked con, cage, Light Pipe (on Top) combo
- D - Stacked connector+cage, Light Pipe (in the cage)
- L - Stacked low profile combo

#### NUMBER OF PORT IN ROW

- 1 - 1X1 or 2X1
- 2 - 1X2 or 2X2
- 4 - 1X4 or 2X4

1 - Standard

1 - Standard

X - Various options available, customer specific  
Consult sales or website for details

#### PACKAGING

- 1 - Tray packaging (stacked)
- T - Tape and reel packaging  
(Both connector and cage)
- H - T&R for connector/tray for cage  
(for 1Xn only)

#### PLATING OPTIONS FOR CAGE

- 1 - Bright tin (for wave soldering)
- 2 - Nickel
- 3 - Matte tin (for SMT soldering)

#### PLATING OPTIONS FOR CONNECTOR

- 1 - 30µ" gold plating on mating area  
150-300µ" tin/lead on termination
- 2 - 30µ" gold plating on mating area  
gold flash on termination
- 3 - 30µ" gold plating on mating area  
150-300µ" matte tin on termination
- 4 - 15µ" gold plating on mating area  
150-300µ" tin/lead on termination
- 5 - 15µ" gold plating on mating area  
gold flash on termination
- 6 - 15µ" gold plating on mating area  
150-300µ" matte tin on termination

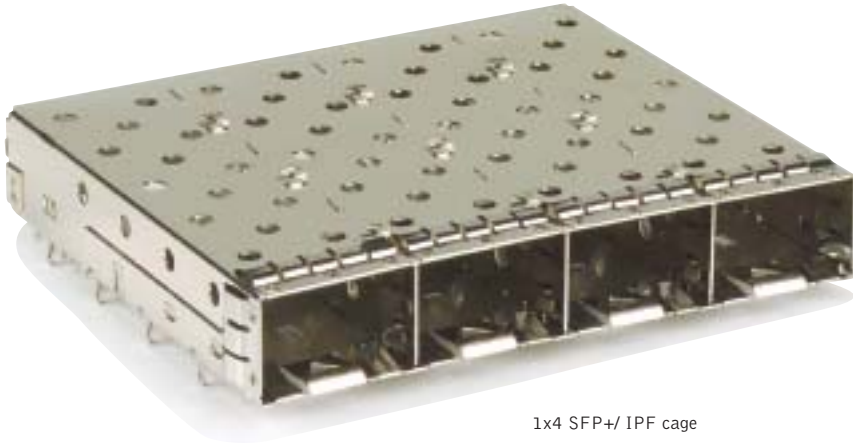
#### OPTIONAL DUST COVER

- 0 - Without dust cover
- D - With dust cover (shipped loose)

#### HEAT SINK / LIGHT PIPE OPTION

- 0 - None
- X - Other options available, customer specific

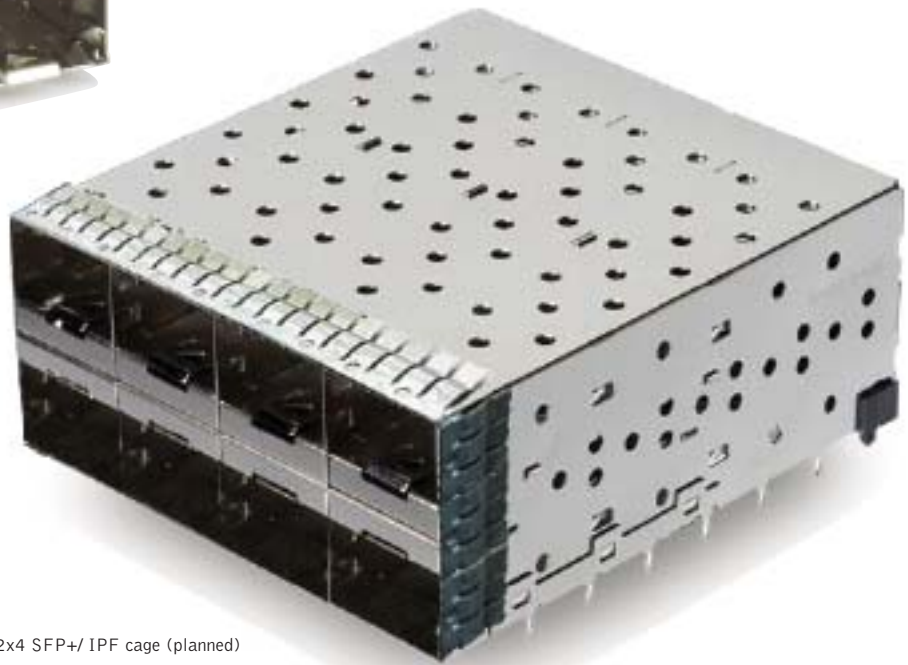
## SFP Plus & SFP Enhanced



1x4 SFP+/ IPF cage



1x2 SFP+/ IPF cage



2x4 SFP+/ IPF cage (planned)