

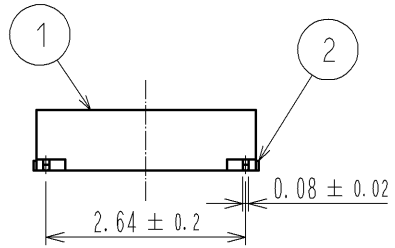
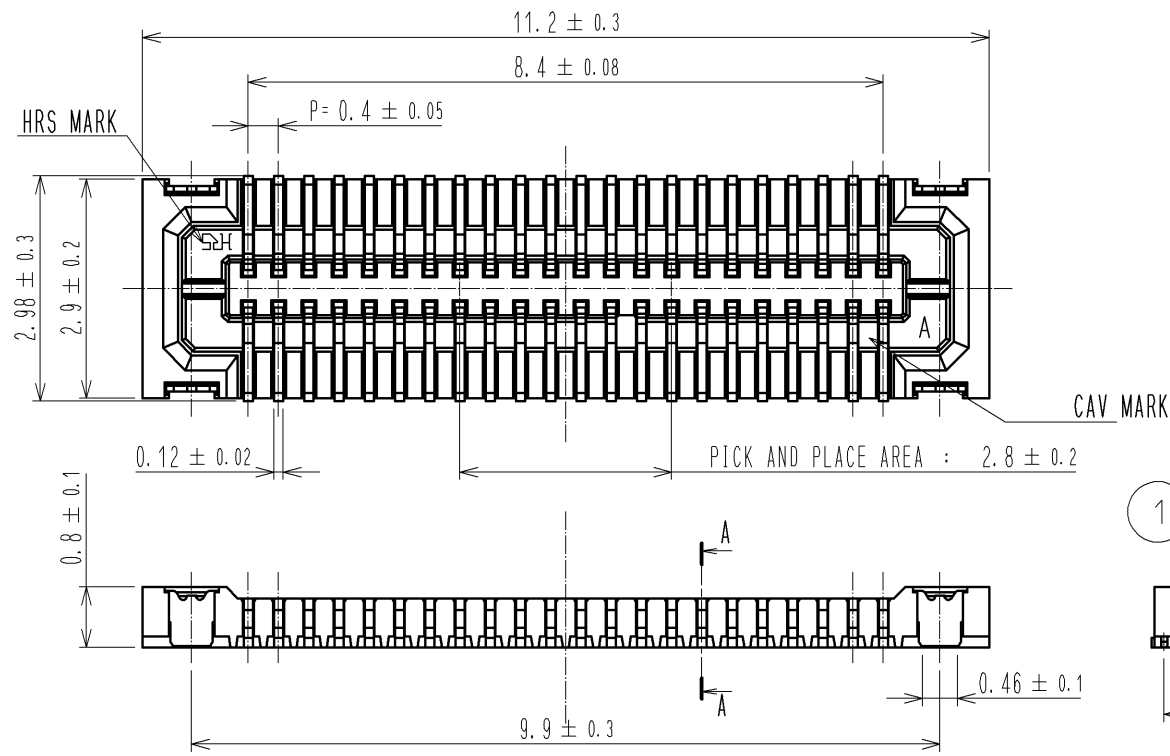
## 阅读申明

- 1.本站收集的数据手册和产品资料都来自互联网，版权归原作者所有。如读者和版权方有任何异议请及时告之，我们将妥善解决。
- 2.本站提供的中文数据手册是英文数据手册的中文翻译，其目的是协助用户阅读，该译文无法自动跟随原稿更新，同时也可能存在翻译上的不当。建议读者以英文原稿为参考以便获得更精准的信息。
- 3.本站提供的产品资料，来自厂商的技术支持或者使用者的心得体会等，其内容可能存在描述上的差异，建议读者做出适当判断。
- 4.如需与我们联系，请发邮件到marketing@iczoom.com，主题请标有“数据手册”字样。

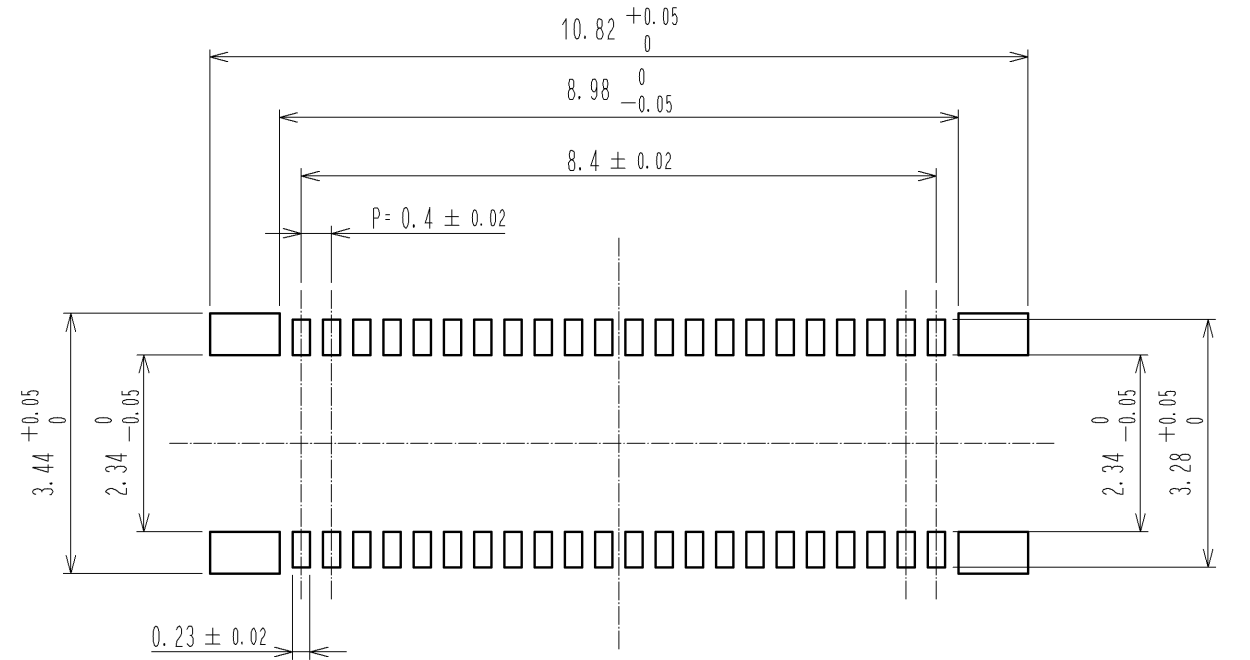
## Read Statement

1. The datasheets and other product information on the site are all from network reference or other public materials, and the copyright belongs to the original author and original published source. If readers and copyright owners have any objections, please contact us and we will deal with it in a timely manner.
2. The Chinese datasheets provided on the website is a Chinese translation of the English datasheets. Its purpose is for reader's learning exchange only and do not involve commercial purposes. The translation cannot be automatically updated with the original manuscript, and there may also be improper translations. Readers are advised to use the English manuscript as a reference for more accurate information.
3. All product information provided on the website refer to solutions from manufacturers' technical support or users the contents may have differences in description, and readers are advised to take the original article as the standard.
4. If you have any questions, please contact us at marketing@iczoom.com and mark the subject with "Datasheets" .

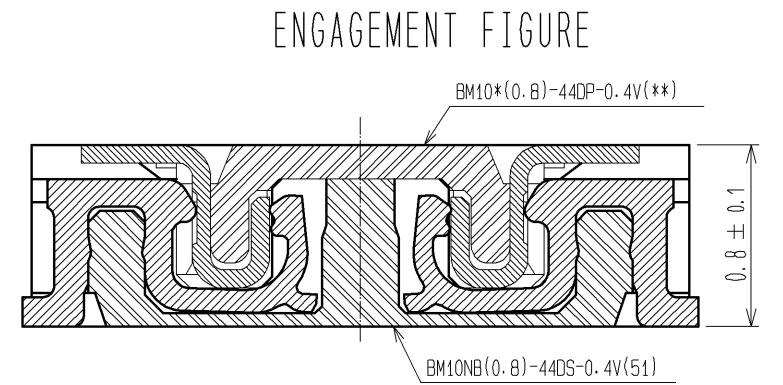
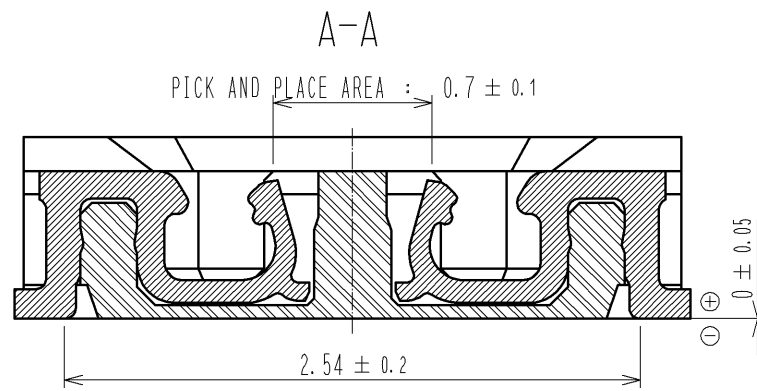
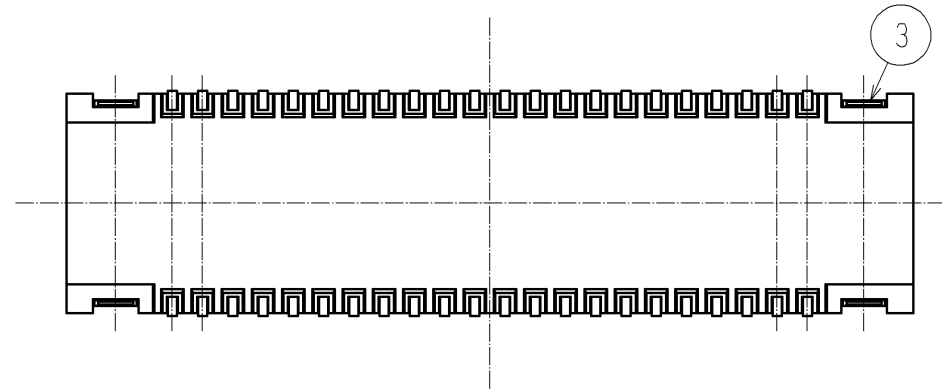
| APPLICABLE STANDARD  |  |                          |   |                           |                |
|--|--|--------------------------|---|---------------------------|----------------|
| RATING   | OPERATING TEMPERATURE RANGE  | -35°C TO +85°C (NOTES 1) | STORAGE TEMPERATURE RANGE   | -10°C TO +60°C            |                |
|  | VOLTAGE  | 30V AC                   | APPLICABLE CONNECTOR  | BM10*(0.8)-44DP-0.4V(*)   |                |
|  | CURRENT  | 0.3A                     |   |                           |                |
| SPECIFICATIONS   |  |                          |   |                           |                |
| ITEM   | TEST METHOD  |                          | REQUIREMENTS  | QT                        | AT             |
| CONSTRUCTION   |  |                          |   |                           |                |
| GENERAL EXAMINATION  | CONFIRMED VISUALLY AND BY MEASURING INSTRUMENT.  |                          | ACCORDING TO DRAWING.   | X                         | X              |
| MARKING  | CONFIRMED VISUALLY.  |                          |   | X                         | X              |
| ELECTRIC CHARACTERISTICS                                       |  |                          |   |                           |                |
| CONTACT RESISTANCE   | 20mV AC OR LESS 1kHz, 1mA.   |                          | 100mΩ MAX.  | X                         | -              |
| INSULATION RESISTANCE  | 100V DC.   |                          | 50MΩ MIN.   | X                         | -              |
| VOLTAGE PROOF  | 100V AC FOR 1 min.   |                          | NO FLASHOVER OR BREAKDOWN.  | X                         | -              |
| MECHANICAL CHARACTERISTICS                                     |  |                          |   |                           |                |
| INSERTION AND WITHDRAWAL FORCES                                | MEASURED BY APPLICABLE CONNECTOR.  |                          | INSERTION FORCE 45.4N MAX<br>WITHDRAWAL FORCE 8.7N MIN  | X                         | -              |
| MECHANICAL OPERATION   | 10 TIMES INSERTIONS AND WITHDRAWAL.  |                          | ① CONTACT RESISTANCE: 100mΩ MAX.<br>② NO DAMAGE, CRACK OR LOOSENESS OF PARTS.                                       | X                         | -              |
| VIBRATION  | FREQUENCY 10 TO 55 TO 10 Hz, APPROX 5min, SINGLE AMPLITUDE 0.75 mm, 10CYCLES, FOR 3 DIRECTIONS.                  |                          | ① NO ELECTRICAL DISCONTINUITY OF 1 μs.<br>② NO DAMAGE, CRACK OR LOOSENESS OF PARTS.                                 | X                         | -              |
| SHOCK  | 490 m/s <sup>2</sup> DURATION OF PULSE 11 ms AT 3 TIMES FOR 3 DIRECTIONS.  |                          | ① NO ELECTRICAL DISCONTINUITY OF 1 μs.<br>② NO DAMAGE, CRACK OR LOOSENESS OF PARTS.                                 | X                         | -              |
| ENVIRONMENTAL CHARACTERISTICS                                  |  |                          |   |                           |                |
| RAPID CHANGE OF TEMPERATURE                                    | TEMPERATURE -55 → +85 °C<br>TIME 30 → 30 min<br>UNDER 5 CYCLES.<br>(RELOCATION TIME TO CHAMBER: WITHIN 2 ~3 MIN) |                          | ① CONTACT RESISTANCE: 100mΩ MAX.<br>② INSULATION RESISTANCE: 50MΩ MIN.<br>③ NO DAMAGE, CRACK OR LOOSENESS OF PARTS. | X                         | -              |
| DAMP HEAT (STEADY STATE)                                       | EXPOSED AT 40 ± 2 °C, 90 TO 95 %, 96 h.  |                          | ① CONTACT RESISTANCE: 100mΩ MAX.<br>② INSULATION RESISTANCE: 25MΩ MIN.<br>③ NO DAMAGE, CRACK OR LOOSENESS OF PARTS. | X                         | -              |
| SULPHUR DIOXIDE  | EXPOSED IN 25 PPM FOR 96h, 25°C, 75%.<br>(REFER TO JIS C 60068)  |                          | ① CONTACT RESISTANCE: 100mΩ MAX.<br>② NO DAMAGE, CRACK OR LOOSENESS OF PARTS.                                       | X                         | -              |
|  |  |                          |   |                           |                |
| COUNT  | DESCRIPTION OF REVISIONS   | DESIGNED                 | CHECKED   | DATE                      |                |
| △  |  |                          |   |                           |                |
| REMARKS  |  |                          | APPROVED  | KH. IKEDA                 | 10.01.05       |
| NOTE1: INCLUDE THE TEMPERATURE RISING BY CURRENT               |  |                          | CHECKED   | TS. MIYAZAKI              | 10.01.05       |
| Unless otherwise specified, refer to JIS C 5402 and IEC 60512  |  |                          | DESIGNED  | SH. HOSODA                | 10.01.04       |
|  |  |                          | DRAWN   | SH. HOSODA                | 10.01.04       |
| Note QT:Qualification Test AT:Assurance Test X:Applicable Test |  |                          | DRAWING NO.   |                           | ELC4-318886-01 |
| <b>HRS</b>   | SPECIFICATION SHEET  |                          | PART NO.  | BM10NB(0.8)-44DS-0.4V(51) |                |
|  | HIROSE ELECTRIC CO., LTD.  |                          | CODE NO.  | CL684-6109-5-51           | △ 1/1          |



RECOMMENDED PATTERN

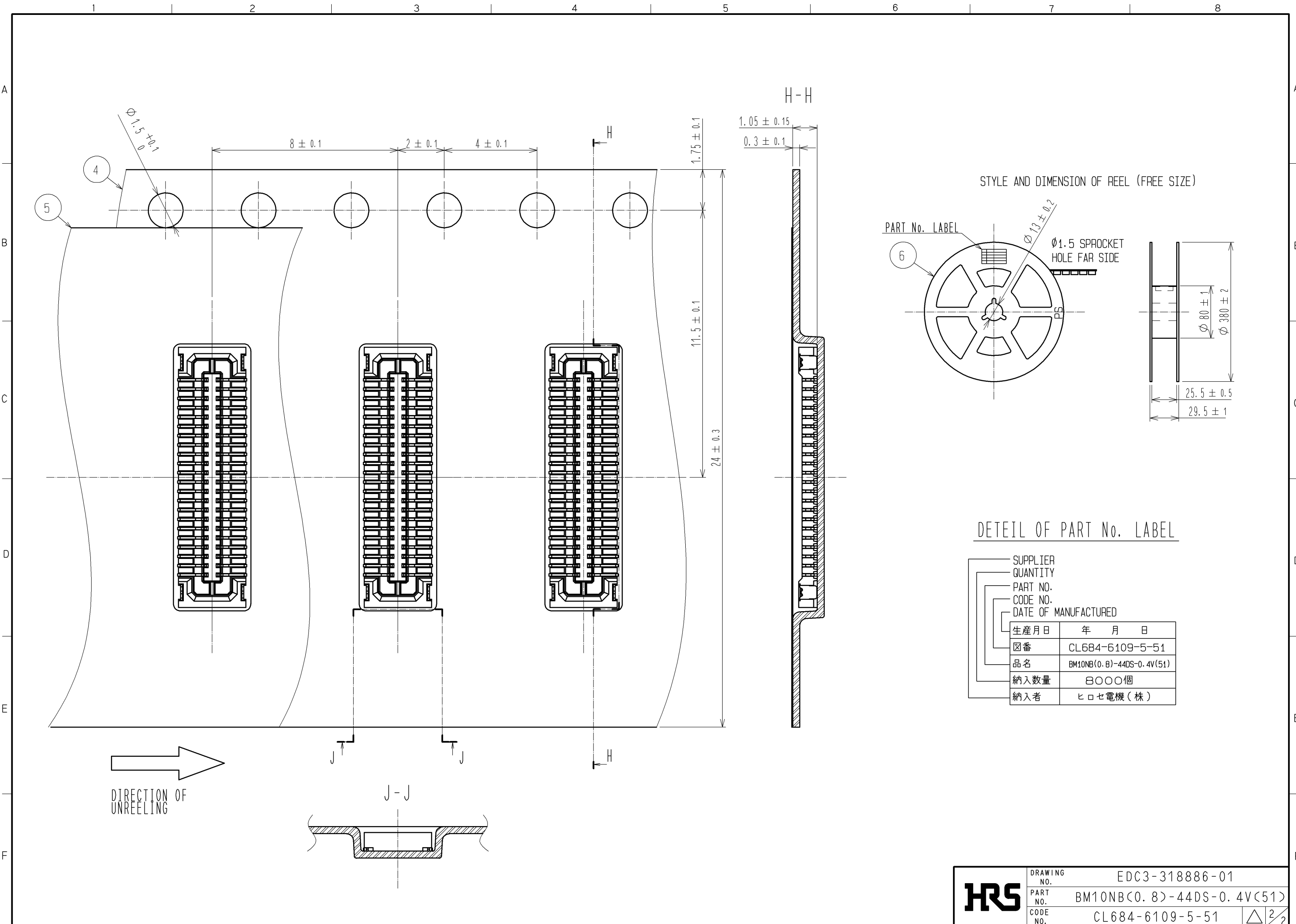


RECOMMENDED SOLDER PASTE : THICKNESS 120#m



- NOTE 1. ALL LEADS CO-PLANARITY SHALL BE 0.1 MAX.  
 2. PER REEL : 8000 CONNECTORS.  
 3. AT THE BEGINNING OF THE REEL, 100 mm AT MIN SHALL BE EMPTY POCKETS.  
 AT THE END OF THE REEL, 160 mm AT MIN SHALL BE EMPTY.  
 4 CONTACT PLATING SPECIFICATIONS.  
 CONTACT AREA : GOLD 0.05#m MIN.  
 SMT LEAD : GOLD 0.05#m MIN.  
 UNDERPLATING : NICKEL 1#m MIN.  
 (SURFACE : SEALING)  
 5 METAL HOLD DOWN PLATING SPECIFICATIONS.  
 MOUNTING AREA: GOLD 0.05#m MIN.  
 UNDERPLATING : NICKEL 1#m MIN.  
 6. PEEL FORCE OF COVER TAPE REFERS TO JIS C 0806.

| 3                     | PHOSPHOR BRONZE | 5                | 6                                  | PS                       | PLASTIC REEL (BLACK)          |
|-----------------------|-----------------|------------------|------------------------------------|--------------------------|-------------------------------|
| 2                     | PHOSPHOR BRONZE | 4                | 5                                  | POLYESTER                | CLEAR (COVER TAPE)            |
| 1                     | LCP             | UL94V-0. BLACK   | 4                                  | PS                       | CLEAR (EMBOSSED CARRIER TAPE) |
| NO.                   | MATERIAL        | FINISH . REMARKS | NO.                                | MATERIAL                 | FINISH . REMARKS              |
| UNITS                 |                 | SCALE            | COUNT                              | DESCRIPTION OF REVISIONS |                               |
| mm                    |                 | FREE             |                                    | DESIGNED                 | CHECKED                       |
| APPROVED : KH. IKEDA  |                 | 10.01.06         | DRAWING NO. EDC3-318886-01         |                          |                               |
| CHECED : TS. MIYAZAKI |                 | 10.01.06         | PART NO. BM10NB(0.8)-44DS-0.4V(51) |                          |                               |
| DESIGNED : SH. HOSODA |                 | 10.01.04         | CODE NO. CL684-6109-5-51           |                          |                               |
| DRAWN : SH. HOSODA    |                 | 10.01.04         | 1/2                                |                          |                               |



STYLE AND DIMENSION OF REEL (FREE SIZE)

DETEIL OF PART No. LABEL

|                      |                           |
|----------------------|---------------------------|
| SUPPLIER             |                           |
| QUANTITY             |                           |
| PART NO.             |                           |
| CODE NO.             |                           |
| DATE OF MANUFACTURED |                           |
| 生産月日                 | 年 月 日                     |
| 図番                   | CL684-6109-5-51           |
| 品名                   | BM10NB(0.8)-44DS-0.4V(51) |
| 納入数量                 | 8000個                     |
| 納入者                  | ヒロセ電機(株)                  |

|            |             |                           |                 |
|------------|-------------|---------------------------|-----------------|
| <b>HRS</b> | DRAWING NO. | EDC3-318886-01            |                 |
|            | PART NO.    | BM10NB(0.8)-44DS-0.4V(51) |                 |
|            | CODE NO.    | CL684-6109-5-51           | $\triangle 2/2$ |
|            | NO.         |                           |                 |