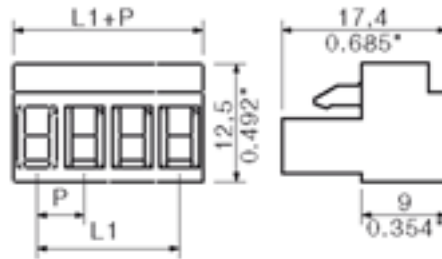
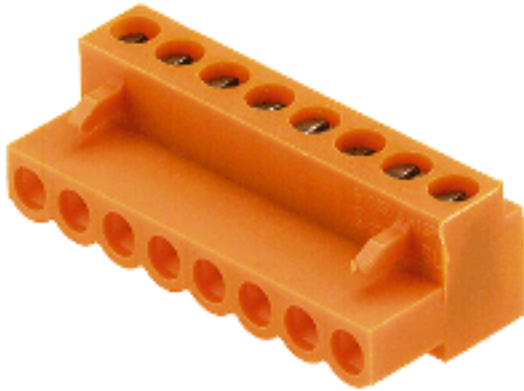


## 阅读申明

- 1.本站收集的数据手册和产品资料都来自互联网，版权归原作者所有。如读者和版权方有任何异议请及时告之，我们将妥善解决。
- 2.本站提供的中文数据手册是英文数据手册的中文翻译，其目的是协助用户阅读，该译文无法自动跟随原稿更新，同时也可能存在翻译上的不当。建议读者以英文原稿为参考以便获得更精准的信息。
- 3.本站提供的产品资料，来自厂商的技术支持或者使用者的心得体会等，其内容可能存在描述上的差异，建议读者做出适当判断。
- 4.如需与我们联系，请发邮件到marketing@iczoom.com，主题请标有“数据手册”字样。

## Read Statement

1. The datasheets and other product information on the site are all from network reference or other public materials, and the copyright belongs to the original author and original published source. If readers and copyright owners have any objections, please contact us and we will deal with it in a timely manner.
2. The Chinese datasheets provided on the website is a Chinese translation of the English datasheets. Its purpose is for reader's learning exchange only and do not involve commercial purposes. The translation cannot be automatically updated with the original manuscript, and there may also be improper translations. Readers are advised to use the English manuscript as a reference for more accurate information.
3. All product information provided on the website refer to solutions from manufacturers' technical support or users the contents may have differences in description, and readers are advised to take the original article as the standard.
4. If you have any questions, please contact us at marketing@iczoom.com and mark the subject with "Datasheets" .



#### General ordering data

Order No.	1716390000
Part designation	BL 5.08/9 SN OR
Version	PCB plug-in connector, Female connectors, Leaf spring connection, Clamping range, max.: 2.08 mm <sup>2</sup> , Pitch: 5.08 mm, No. of poles: 9, 180°, Box
EAN	4008190376437
Qty.	50 pc(s).

#### System parameters

Conductor connection system	Leaf spring connection
Outgoing direction of conductor	180°
Pitch	5.08 mm
Pitch in inch	0.2 inch
No. of poles	9
No. of rows	1
Screwdriver blade	0.6 x 3.5
Screwdriver blade standard	DIN 5264
Tightening torque, min.	0.4 Nm
Tightening torque, max.	0.5 Nm
Clamping screw	M 2.5
Stripping length	6 mm
L1 in mm	40.64 mm
L1 in inch	1.6 inch
Electric shock protection to DIN VDE 0470	IP 00

#### Material data

Insulating material	PA
Colour	orange
colour chart	Similar to RAL 2000
Insulating material group	I
Flammability class UL 94	V-2
CTI	>= 200
Contact base material	CuSn
Contact surface	tinned

## Material data

### Connectable conductors

Clamping range, min.	0.13 mm <sup>2</sup>
Clamping range, max.	2.08 mm <sup>2</sup>
AWG, min.	26
AWG, max.	14
Solid, min. H05(07) V-U	0.2 mm <sup>2</sup>
Solid, max. H05(07) V-U	1.5 mm <sup>2</sup>
Flexible, min. H05(07) V-K	0.2 mm <sup>2</sup>
Flexible, max. H05(07) V-K	1.5 mm <sup>2</sup>
With wire end ferrule, acc. to DIN 46 228/1, min.	0.2 mm <sup>2</sup>
With wire end ferrule, acc. to DIN 46 228/1, max.	1.5 mm <sup>2</sup>
w. plastic collar ferrule, DIN 46228 pt 4, min.	0.2 mm <sup>2</sup>
w. plastic collar ferrule, DIN 46228 pt 4, max.	1 mm <sup>2</sup>
Gauge to EN 60999 a x b; ø	2.4 mm x 1.5 mm;

### DIN IEC rating data

Rated current, min. No. pins (Tu=20°C)	14 A
Rated current, max. No. pins (Tu=20°C)	12 A
Rated current, min. No. pins (Tu=40°C)	12 A
Rated current, max. No. pins (Tu=40°C)	10 A
Rated voltage for overvoltage class/pollution severity II/2	400 V
Rated voltage for overvoltage class/pollution severity III/2	320 V
Rated voltage for overvoltage class/pollution severity III/3	250 V
Rated impulse withstand voltage for overvoltage class/pollution severity II/2	4 kV
Rated impulse withstand voltage for overvoltage class/pollution severity III/2	4 kV
Rated impulse withstand voltage for overvoltage class/pollution severity III/3	4 kV

### CSA rating data

Rated voltage (Use group D)	300 V
Rated current (Use group D)	10 A
AWG conductor (field wiring), min.	26
AWG conductor (field wiring), max.	14

### UL 1059 rating data

Rated voltage (Use group D)	300 V
Rated current (Use group D)	10 A
AWG conductor, min.	26
AWG conductor, max.	14

## Approvals

Approvals institutes



## Classifications

ETIM 2.0	NK
ETIM 3.0	EC001284
eClass 4.1	27-26-07-01
eClass 5.0	27-26-07-01
eClass 5.1	27-26-07-04

## Similar products

Order No.	Part designation	Version
1716320000	BL 5.08/2 SN OR	PCB plug-in connector, Female connectors, Leaf spring connection, Clamping range, max.: 2.08 mm <sup>2</sup> , Pitch: 5.08 mm, No. of poles: 2, 180°, Box
1716470000	BL 5.08/2 SN SW	PCB plug-in connector, Female connectors, Leaf spring connection, Clamping range, max.: 2.08 mm <sup>2</sup> , Pitch: 5.08 mm, No. of poles: 2, 180°, Box
1723830000	BL 5.08/2 SN GN	PCB plug-in connector, Female connectors, Leaf spring connection, Clamping range, max.: 2.08 mm <sup>2</sup> , Pitch: 5.08 mm, No. of poles: 2, 180°, Box
1716330000	BL 5.08/3 SN OR	PCB plug-in connector, Female connectors, Leaf spring connection, Clamping range, max.: 2.08 mm <sup>2</sup> , Pitch: 5.08 mm, No. of poles: 3, 180°, Box
1716480000	BL 5.08/3 SN SW	PCB plug-in connector, Female connectors, Leaf spring connection, Clamping range, max.: 2.08 mm <sup>2</sup> , Pitch: 5.08 mm, No. of poles: 3, 180°, Box
1723840000	BL 5.08/3 SN GN	PCB plug-in connector, Female connectors, Leaf spring connection, Clamping range, max.: 2.08 mm <sup>2</sup> , Pitch: 5.08 mm, No. of poles: 3, 180°, Box
1716340000	BL 5.08/4 SN OR	PCB plug-in connector, Female connectors, Leaf spring connection, Clamping range, max.: 2.08 mm <sup>2</sup> , Pitch: 5.08 mm, No. of poles: 4, 180°, Box
1716490000	BL 5.08/4 SN SW	PCB plug-in connector, Female connectors, Leaf spring connection, Clamping range, max.: 2.08 mm <sup>2</sup> , Pitch: 5.08 mm, No. of poles: 4, 180°, Box
1723850000	BL 5.08/4 SN GN	PCB plug-in connector, Female connectors, Leaf spring connection, Clamping range, max.: 2.08 mm <sup>2</sup> , Pitch: 5.08 mm, No. of poles: 4, 180°, Box

1716350000	BL 5.08/5 SN OR	PCB plug-in connector, Female connectors, Leaf spring connection, Clamping range, max.: 2.08 mm <sup>2</sup> , Pitch: 5.08 mm, No. of poles: 5, 180°, Box
1716500000	BL 5.08/5 SN SW	PCB plug-in connector, Female connectors, Leaf spring connection, Clamping range, max.: 2.08 mm <sup>2</sup> , Pitch: 5.08 mm, No. of poles: 5, 180°, Box
1723860000	BL 5.08/5 SN GN	PCB plug-in connector, Female connectors, Leaf spring connection, Clamping range, max.: 2.08 mm <sup>2</sup> , Pitch: 5.08 mm, No. of poles: 5, 180°, Box
1716360000	BL 5.08/6 SN OR	PCB plug-in connector, Female connectors, Leaf spring connection, Clamping range, max.: 2.08 mm <sup>2</sup> , Pitch: 5.08 mm, No. of poles: 6, 180°, Box
1716510000	BL 5.08/6 SN SW	PCB plug-in connector, Female connectors, Leaf spring connection, Clamping range, max.: 2.08 mm <sup>2</sup> , Pitch: 5.08 mm, No. of poles: 6, 180°, Box
1723870000	BL 5.08/6 SN GN	PCB plug-in connector, Female connectors, Leaf spring connection, Clamping range, max.: 2.08 mm <sup>2</sup> , Pitch: 5.08 mm, No. of poles: 6, 180°, Box
1716370000	BL 5.08/7 SN OR	PCB plug-in connector, Female connectors, Leaf spring connection, Clamping range, max.: 2.08 mm <sup>2</sup> , Pitch: 5.08 mm, No. of poles: 7, 180°, Box
1716520000	BL 5.08/7 SN SW	PCB plug-in connector, Female connectors, Leaf spring connection, Clamping range, max.: 2.08 mm <sup>2</sup> , Pitch: 5.08 mm, No. of poles: 7, 180°, Box
1723880000	BL 5.08/7 SN GN	PCB plug-in connector, Female connectors, Leaf spring connection, Clamping range, max.: 2.08 mm <sup>2</sup> , Pitch: 5.08 mm, No. of poles: 7, 180°, Box
1716380000	BL 5.08/8 SN OR	PCB plug-in connector, Female connectors, Leaf spring connection, Clamping range, max.: 2.08 mm <sup>2</sup> , Pitch: 5.08 mm, No. of poles: 8, 180°, Box
1716530000	BL 5.08/8 SN SW	PCB plug-in connector, Female connectors, Leaf spring connection, Clamping range, max.: 2.08 mm <sup>2</sup> , Pitch: 5.08 mm, No. of poles: 8, 180°, Box
1723890000	BL 5.08/8 SN GN	PCB plug-in connector, Female connectors, Leaf spring connection, Clamping range, max.: 2.08 mm <sup>2</sup> , Pitch: 5.08 mm, No. of poles: 8, 180°, Box
1716540000	BL 5.08/9 SN SW	PCB plug-in connector, Female connectors, Leaf spring connection, Clamping range, max.: 2.08 mm <sup>2</sup> , Pitch: 5.08 mm, No. of poles: 9, 180°, Box
1723900000	BL 5.08/9 SN GN	PCB plug-in connector, Female connectors, Leaf spring connection, Clamping range, max.: 2.08 mm <sup>2</sup> , Pitch: 5.08 mm, No. of poles: 9, 180°, Box
1716400000	BL 5.08/10 SN OR	PCB plug-in connector, Female connectors, Leaf spring connection, Clamping range, max.: 2.08 mm <sup>2</sup> , Pitch: 5.08 mm, No. of poles: 10, 180°, Box
1716550000	BL 5.08/10 SN SW	PCB plug-in connector, Female connectors, Leaf spring connection, Clamping range, max.: 2.08 mm <sup>2</sup> , Pitch: 5.08 mm, No. of poles: 10, 180°, Box
1723910000	BL 5.08/10 SN GN	PCB plug-in connector, Female connectors, Leaf spring connection, Clamping range, max.: 2.08 mm <sup>2</sup> , Pitch: 5.08 mm, No. of poles: 10, 180°, Box

1716410000	BL 5.08/11 SN OR	PCB plug-in connector, Female connectors, Leaf spring connection, Clamping range, max.: 2.08 mm <sup>2</sup> , Pitch: 5.08 mm, No. of poles: 11, 180°, Box
1716560000	BL 5.08/11 SN SW	PCB plug-in connector, Female connectors, Leaf spring connection, Clamping range, max.: 2.08 mm <sup>2</sup> , Pitch: 5.08 mm, No. of poles: 11, 180°, Box
1716420000	BL 5.08/12 SN OR	PCB plug-in connector, Female connectors, Leaf spring connection, Clamping range, max.: 2.08 mm <sup>2</sup> , Pitch: 5.08 mm, No. of poles: 12, 180°, Box
1716570000	BL 5.08/12 SN SW	PCB plug-in connector, Female connectors, Leaf spring connection, Clamping range, max.: 2.08 mm <sup>2</sup> , Pitch: 5.08 mm, No. of poles: 12, 180°, Box
1723930000	BL 5.08/12 SN GN	PCB plug-in connector, Female connectors, Leaf spring connection, Clamping range, max.: 2.08 mm <sup>2</sup> , Pitch: 5.08 mm, No. of poles: 12, 180°, Box
1716430000	BL 5.08/13 SN OR	PCB plug-in connector, Female connectors, Leaf spring connection, Clamping range, max.: 2.08 mm <sup>2</sup> , Pitch: 5.08 mm, No. of poles: 13, 180°, Box
1716580000	BL 5.08/13 SN SW	PCB plug-in connector, Female connectors, Leaf spring connection, Clamping range, max.: 2.08 mm <sup>2</sup> , Pitch: 5.08 mm, No. of poles: 13, 180°, Box
1716440000	BL 5.08/14 SN OR	PCB plug-in connector, Female connectors, Leaf spring connection, Clamping range, max.: 2.08 mm <sup>2</sup> , Pitch: 5.08 mm, No. of poles: 14, 180°, Box
1716590000	BL 5.08/14 SN SW	PCB plug-in connector, Female connectors, Leaf spring connection, Clamping range, max.: 2.08 mm <sup>2</sup> , Pitch: 5.08 mm, No. of poles: 14, 180°, Box
1723950000	BL 5.08/14 SN GN	PCB plug-in connector, Female connectors, Leaf spring connection, Clamping range, max.: 2.08 mm <sup>2</sup> , Pitch: 5.08 mm, No. of poles: 14, 180°, Box
1716450000	BL 5.08/15 SN OR	PCB plug-in connector, Female connectors, Leaf spring connection, Clamping range, max.: 2.08 mm <sup>2</sup> , Pitch: 5.08 mm, No. of poles: 15, 180°, Box
1716600000	BL 5.08/15 SN SW	PCB plug-in connector, Female connectors, Leaf spring connection, Clamping range, max.: 2.08 mm <sup>2</sup> , Pitch: 5.08 mm, No. of poles: 15, 180°, Box
1716460000	BL 5.08/16 SN OR	PCB plug-in connector, Female connectors, Leaf spring connection, Clamping range, max.: 2.08 mm <sup>2</sup> , Pitch: 5.08 mm, No. of poles: 16, 180°, Box
1716610000	BL 5.08/16 SN SW	PCB plug-in connector, Female connectors, Leaf spring connection, Clamping range, max.: 2.08 mm <sup>2</sup> , Pitch: 5.08 mm, No. of poles: 16, 180°, Box
1723970000	BL 5.08/16 SN GN	PCB plug-in connector, Female connectors, Leaf spring connection, Clamping range, max.: 2.08 mm <sup>2</sup> , Pitch: 5.08 mm, No. of poles: 16, 180°, Box