

阅读申明

- 1.本站收集的数据手册和产品资料都来自互联网，版权归原作者所有。如读者和版权方有任何异议请及时告之，我们将妥善解决。
- 2.本站提供的中文数据手册是英文数据手册的中文翻译，其目的是协助用户阅读，该译文无法自动跟随原稿更新，同时也可能存在翻译上的不当。建议读者以英文原稿为参考以便获得更精准的信息。
- 3.本站提供的产品资料，来自厂商的技术支持或者使用者的心得体会等，其内容可能存在描述上的差异，建议读者做出适当判断。
- 4.如需与我们联系，请发邮件到marketing@iczoom.com，主题请标有“数据手册”字样。

Read Statement

1. The datasheets and other product information on the site are all from network reference or other public materials, and the copyright belongs to the original author and original published source. If readers and copyright owners have any objections, please contact us and we will deal with it in a timely manner.
2. The Chinese datasheets provided on the website is a Chinese translation of the English datasheets. Its purpose is for reader's learning exchange only and do not involve commercial purposes. The translation cannot be automatically updated with the original manuscript, and there may also be improper translations. Readers are advised to use the English manuscript as a reference for more accurate information.
3. All product information provided on the website refer to solutions from manufacturers' technical support or users the contents may have differences in description, and readers are advised to take the original article as the standard.
4. If you have any questions, please contact us at marketing@iczoom.com and mark the subject with "Datasheets" .

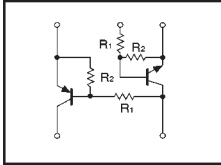
Power management (dual digital transistors)

FMC6A

●Features

- 1) Both the DTA115E and DTC115E chips in a SMT package.

●Circuit diagram



●Absolute maximum ratings (Ta=25°C)

Parameter	Symbol	Limits	Unit
Supply voltage	V _{CC}	50	V
Input voltage	V _{IN}	40	V
		-10	
Output current	I _C	100	mA
	I _O	20	
Power dissipation	P _d	300 (TOTAL)	mW
Storage temperature	T _{stg}	-55~+150	°C

PNP type negative symbols have been omitted.

●Package, marking, and packaging specifications

Part No.	FMC6A
Package	SMT5
Marking	C6
Code	T148
Basic ordering unit (pieces)	3000

●Electrical characteristics (Ta=25°C)

Parameter	Symbol	Min.	Typ.	Max.	Unit	Conditions
Input voltage	V _{I(off)}	—	—	0.5	V	V _{CC} =5/-5V, I _O =100/-100 μA
	V _{I(on)}	3	—	—		
Output voltage	V _{O(on)}	—	0.1	0.3	V	I _C =5/-5mA, I _I =0.25/-0.25mA
Input current	I _I	—	—	0.15	mA	V _I =5/-5V
Output current	I _{O(off)}	—	—	0.5	μA	V _{CC} =50/-50V
DC current gain	G _I	82	—	—	—	I _O =5/-5mA, V _O =5/-5V
Transition frequency	f _T	—	250	—	MHz	V _{CE} =10V/-10V, I _E =-5mA/5mA, f=100MHz *
Input resistance	R _I	70	100	130	kΩ	—
Resistance ratio	R ₂ /R ₁	0.8	1	1.2	—	—

* Transition frequency of mounted transistor. PNP type negative symbols have been omitted.

(94S-830-AC115E)

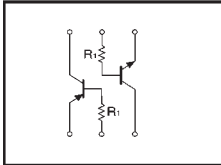
Power management (dual digital transistors)

IMD1A

●Features

- 1) Both the DTA124T and DTC124T chips in a SMT package.

●Circuit diagram



●Absolute maximum ratings (Ta=25°C)

Parameter	Symbol	Limits	Unit
Collector-base voltage	V _{CE0}	50	V
Collector-emitter voltage	V _{CEO}	50	V
Emitter-base voltage	V _{EB0}	5	V
Collector current	I _C	100	mA
Collector power dissipation	P _C	300 (TOTAL)	mW *
Junction temperature	T _J	150	°C
Storage temperature	T _{stg}	-55~+150	°C

* 200mW per element must not be exceeded. PNP type negative symbols have been omitted.

●Package, marking, and packaging specifications

Type	IMD1A
Package	SMT6
Marking	D1
Code	T108
Basic ordering unit (pieces)	3000

●Electrical characteristics (Ta=25°C)

Parameter	Symbol	Min.	Typ.	Max.	Unit	Conditions
Collector-base breakdown voltage	BV _{CE0}	50	—	—	V	I _C =50 μA
Collector-emitter breakdown voltage	BV _{CEO}	50	—	—	V	I _C =1mA
Emitter-base breakdown voltage	BV _{EB0}	5	—	—	V	I _E =50 μA
Collector cutoff current	I _{CBO}	—	—	0.5	μA	V _{CE} =50V
Emitter cutoff current	I _{EB0}	—	—	0.5	μA	V _{EB} =4V
Collector-emitter saturation voltage	V _{CE(sat)}	—	—	0.3	V	I _C /I _E =5mA/0.5mA
DC current transfer ratio	h _{FE}	100	250	600	—	V _{CE} =5V, I _C =1mA
Transition frequency	f _T	—	250	—	MHz	V _{CE} =10V, I _E =-5mA, f=100MHz *
Input resistance	R _I	15.4	22	28.6	kΩ	—

* Transition frequency of mounted transistor. PNP type negative symbols have been omitted.

(96-458-AC124T)