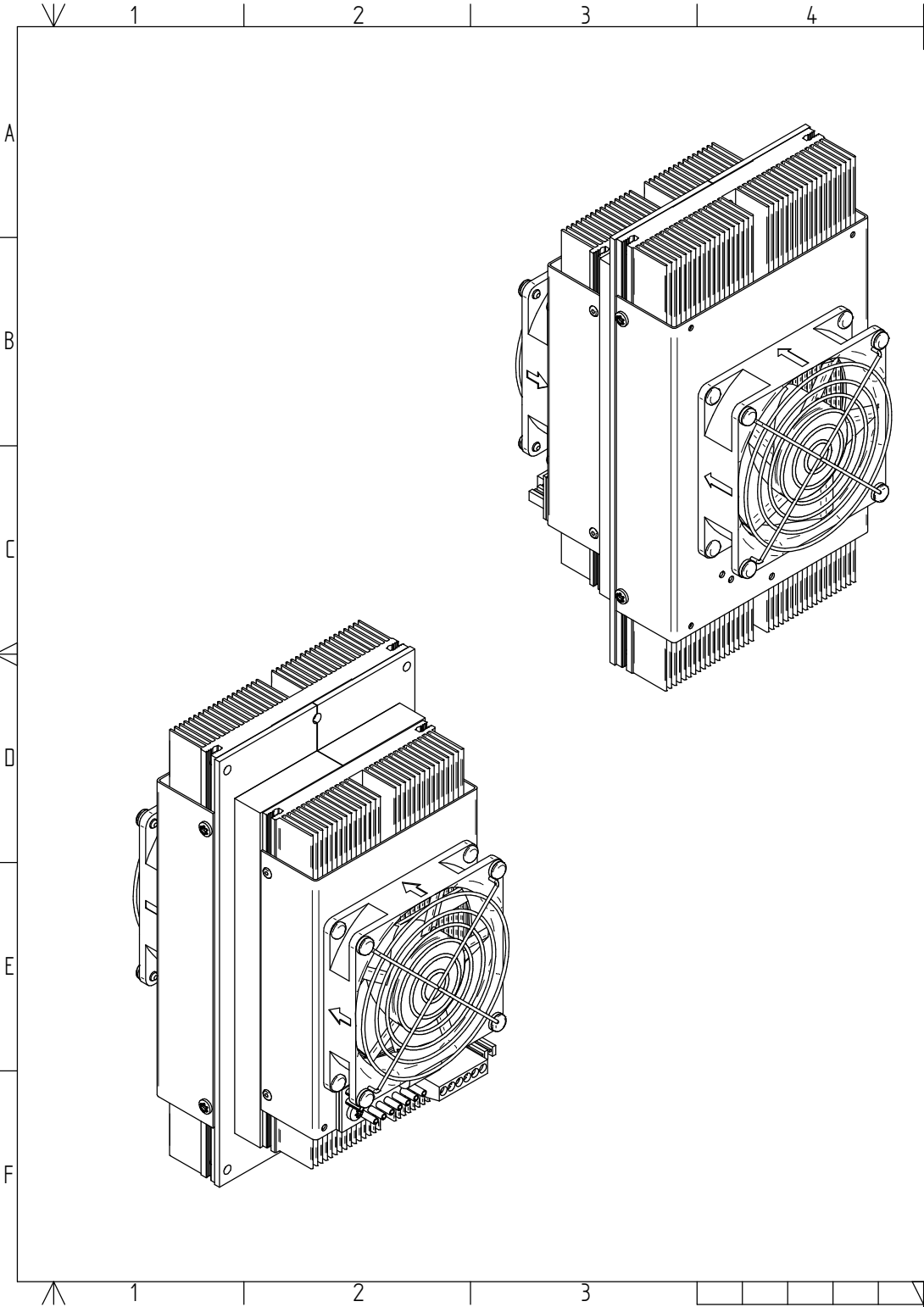


阅读申明

- 1.本站收集的数据手册和产品资料都来自互联网，版权归原作者所有。如读者和版权方有任何异议请及时告之，我们将妥善解决。
- 2.本站提供的中文数据手册是英文数据手册的中文翻译，其目的是协助用户阅读，该译文无法自动跟随原稿更新，同时也可能存在翻译上的不当。建议读者以英文原稿为参考以便获得更精准的信息。
- 3.本站提供的产品资料，来自厂商的技术支持或者使用者的心得体会等，其内容可能存在描述上的差异，建议读者做出适当判断。
- 4.如需与我们联系，请发邮件到marketing@iczoom.com，主题请标有“数据手册”字样。

Read Statement

1. The datasheets and other product information on the site are all from network reference or other public materials, and the copyright belongs to the original author and original published source. If readers and copyright owners have any objections, please contact us and we will deal with it in a timely manner.
2. The Chinese datasheets provided on the website is a Chinese translation of the English datasheets. Its purpose is for reader's learning exchange only and do not involve commercial purposes. The translation cannot be automatically updated with the original manuscript, and there may also be improper translations. Readers are advised to use the English manuscript as a reference for more accurate information.
3. All product information provided on the website refer to solutions from manufacturers' technical support or users the contents may have differences in description, and readers are advised to take the original article as the standard.
4. If you have any questions, please contact us at marketing@iczoom.com and mark the subject with "Datasheets" .



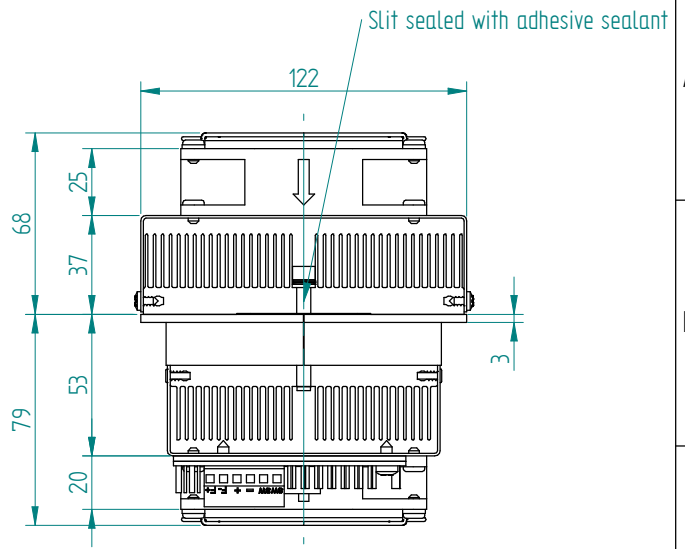
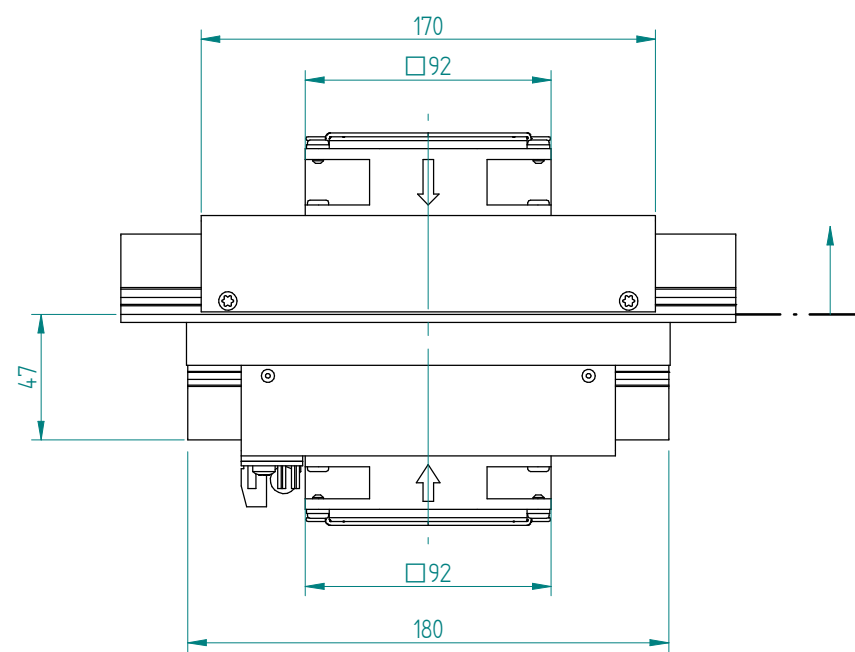
| Description: | | Code: | Specification: (Ta=35°C, dT=0°C) |
|---|--|--|---|
| Heat transfer, cold side: | | A | Air |
| Heat transfer, warm side: | | A | Air |
| Cascade: | | - | No |
| Cooling power: [W] | | 060 | 58 W (Calculated, Tolerance: ±10%) |
| TEA Voltage, nominal: [VDC] | | 24 | 24 VDC |
| TEM Voltage: [VDC] | | Nominal: 24 VDC (Max: 30 VDC) | |
| TEM Current: [A] | | Nominal: 2.7 A, Initial: 3.3 A (Calculated, Tolerance: ±10%) | |
| Fans, cold side: | | 2 | Nominal current: 0.14 A, Voltage: 24 VDC ±10%, L10: 50,000 hrs. at 25°C. |
| Fans, warm side: | | 3 | Nominal current: 0.15 A, Voltage: 24 VDC ±10%, L10: 50,000 hrs. at 25°C, IP55 |
| Temperature controller, sensor: | | 0 | None |
| Temperature control settings, trim options: | | 0 | - |
| Temperature control position: | | 1 | Connection board on coldside fan bracket. |
| Additional controller information: | | 0 | - |
| Overheating thermostat: | | 75°C ±5°C Internally on hot side heat sink surface. | |
| Operating temperature: | | -10°C to +51°C at nominal voltage. | |
| TE-Module(s) temperature specification: | | Max. surface temperature: 80°C. | |
| Enclosed: | | - | |
| Packing: | | Individual cardboard box. | |

| | | |
|--|-------------------------|----------------------------------|
| General tolerances: SS-ISO 2768-1 v | First angle projection: | Dimension units: Metric: [mm] |
|--|-------------------------|----------------------------------|

| | | | | |
|--|-------------------------|---|-----------------------------|---------------------------------|
| Comment/Treating: Warm side of unit designed to comply with IP54. Hipot tested at 750VDC. | | | | |
| Designed by: A. Kim | Checked by: M. Nyman | Approved by: H. Höjer | Release date: 2014-10-15 | Project: Standard |
| E-mail: info.gothenburg@lairdtech.com, Web: www.lairdtech.com | | Title: TE ASSEMBLY 24 VDC, AIR - AIR | | |
| | | Part nr: AA-060-24-23-00-10 | Rev. 04 | Scale: Size, sheet - A3, 1/5 |

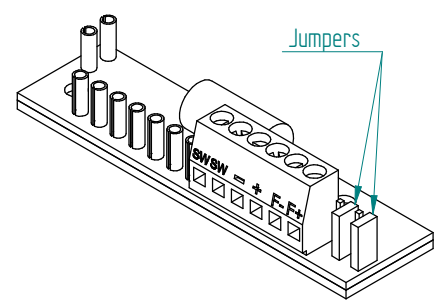
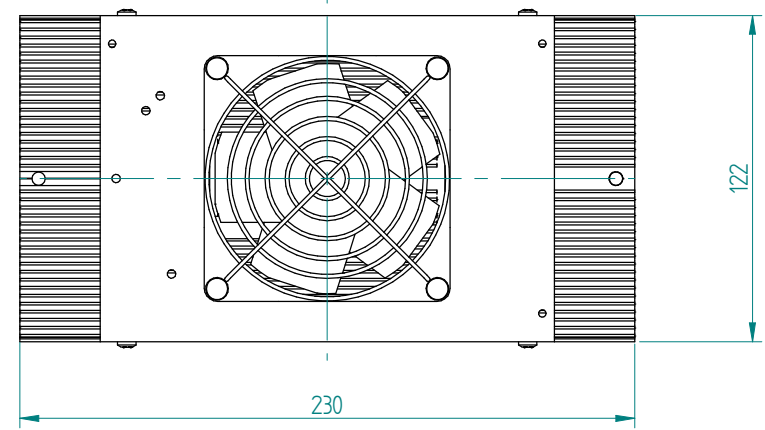
This drawing is the property of Laird Technologies, Inc. Protected in accordance with prevailing law.

Adapted to meet IP54 from this sealing plane.



HOT SIDE

COLD SIDE



Electrical connections:

- "+" : + TEM
- "-" : - TEM
- "F+" : + Fan(s)
- "F-" : - Fan(s)

To use single supply:
Lift the jumpers and rotate 90° to short-cut the pin pairs.
Connect the unit to "+" & "-".

Warning: Single supply not applicable in heating mode or with PWM-regulation.

General tolerances: SS-ISO 2768-1 v First angle projection: Dimension units: Metric: [mm]

| | | | | |
|--|-------------------------|---|-----------------------------|---------------------------------|
| Comment/Treating: Warm side of unit designed to comply with IP54. Hipot tested at 750VDC. | | | | |
| Designed by: A. Kim | Checked by: M. Nyman | Approved by: H. Höjer | Release date: 2014-10-15 | Project: Standard |
| <p>E-mail: info.göteborg@lairdtech.com, Web: www.lairdtech.com</p> | | Title: TE ASSEMBLY 24 VDC, AIR - AIR | | |
| | | Part nr: AA-060-24-23-00-10 | Rev: 04 | Scale: Size, sheet - A3, 2/5 |

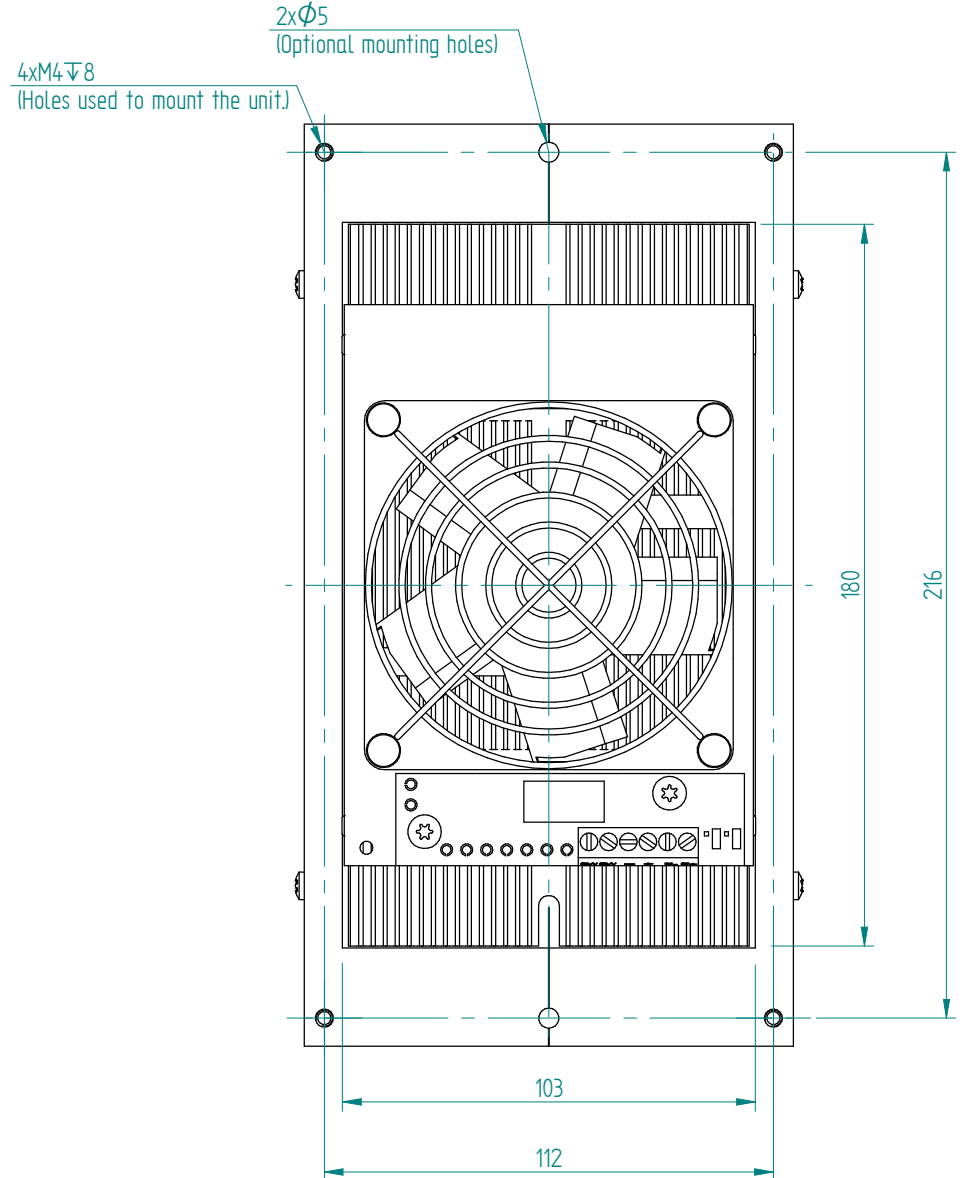
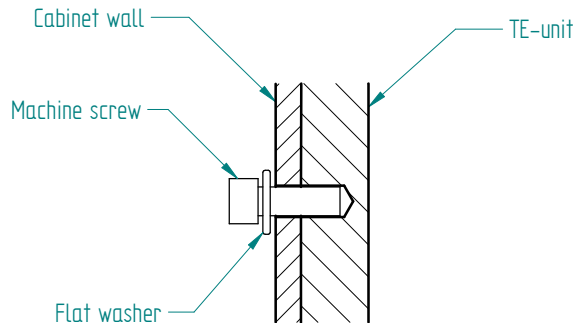
Installation and Service manual

Installation:

1. The TE assembly must be mounted in a cabinet with "Hot side" mounted externally.
2. Suitable cabinet cutout is **105x182 mm**.
3. Recommended for general purposes: the TE assembly should be fastened according to picture below so that the gasket material will seal off around the flange of the assembly.
4. **The TE assembly must be positioned in vertical direction with wires facing downwards (heat sink fins in vertical direction).**
5. Note that condensation may occur. Standing water on the heat sink should be avoided and drip tray may be required.
6. The TE assembly must be protected from external force or violence.
7. The power line to the assembly needs to be protected by a fuse. The fuse rating should be of at least the nominal current of the assembly. It must withstand 150% of rated current for at least 60 seconds.
This is valid at $T_a=35^{\circ}\text{C}$. Fuse ratings for other ambient temperatures ($x^{\circ}\text{C}$) can be calculated with the formula $I[x^{\circ}\text{C}]=\lceil\frac{35^{\circ}\text{C}}{1+0.005^{\circ}\text{C}^{-1}(x-35)}\rceil$.
This is valid when regulating with an ON/OFF regulation. At rapid temperature cycling where this is applicable, there can be need for even higher fuse ratings.
8. Max ripple on supplied power =5%.
9. Switching power to TEM:s at frequencies between 0.01 Hz to 5 kHz will render premature failure of modules and must be avoided.

Service:

Fan impellers and heat sinks must be cleaned on regular intervals to reduce risk for overheating and reduction of cooling function. The interval may vary depending on environment.



General tolerances: SS-ISO 2768-1 v
First angle projection: Dimension units: Metric: [mm]

| | | | | |
|--|-------------------------|---|-----------------------------|----------------------------------|
| Comment/Treating: Warm side of unit designed to comply with IP54. Hipot tested at 750VDC. | | | | |
| Designed by: A. Kim | Checked by: M. Nyman | Approved by: H. Höjer | Release date: 2014-10-15 | Project: Standard |
| | | Title: TE ASSEMBLY 24 VDC, AIR - AIR | | |
| | | Part nr: AA-060-24-23-00-10 | Rev: 04 | Scale: Size, sheet - A3, 3/51 |

E-mail: info.gothenburg@lairdtech.com, Web: www.lairdtech.com