

阅读申明

- 1.本站收集的数据手册和产品资料都来自互联网，版权归原作者所有。如读者和版权方有任何异议请及时告之，我们将妥善解决。
- 2.本站提供的中文数据手册是英文数据手册的中文翻译，其目的是协助用户阅读，该译文无法自动跟随原稿更新，同时也可能存在翻译上的不当。建议读者以英文原稿为参考以便获得更精准的信息。
- 3.本站提供的产品资料，来自厂商的技术支持或者使用者的心得体会等，其内容可能存在描述上的差异，建议读者做出适当判断。
- 4.如需与我们联系，请发邮件到marketing@iczoom.com，主题请标有“数据手册”字样。

Read Statement

1. The datasheets and other product information on the site are all from network reference or other public materials, and the copyright belongs to the original author and original published source. If readers and copyright owners have any objections, please contact us and we will deal with it in a timely manner.
2. The Chinese datasheets provided on the website is a Chinese translation of the English datasheets. Its purpose is for reader's learning exchange only and do not involve commercial purposes. The translation cannot be automatically updated with the original manuscript, and there may also be improper translations. Readers are advised to use the English manuscript as a reference for more accurate information.
3. All product information provided on the website refer to solutions from manufacturers' technical support or users the contents may have differences in description, and readers are advised to take the original article as the standard.
4. If you have any questions, please contact us at marketing@iczoom.com and mark the subject with "Datasheets" .

3-terminal Filters

For power line

ACH series

| | | |
|-------|----------------|---------------------|
| Type: | ACH32C | [1206 inch]* |
| | ACH3218 | [1207 inch] |
| | ACH4518 | [1807 inch] |

* Dimensions Code [EIA]

Issue date: September 2011

- All specifications are subject to change without notice.
 - Conformity to RoHS Directive: This means that, in conformity with EU Directive 2002/95/EC, lead, cadmium, mercury, hexavalent chromium, and specific bromine-based flame retardants, PBB and PBDE, have not been used, except for exempted applications.
-

3-terminal Filters For Power Line

Conformity to RoHS Directive

ACH Series ACH32C

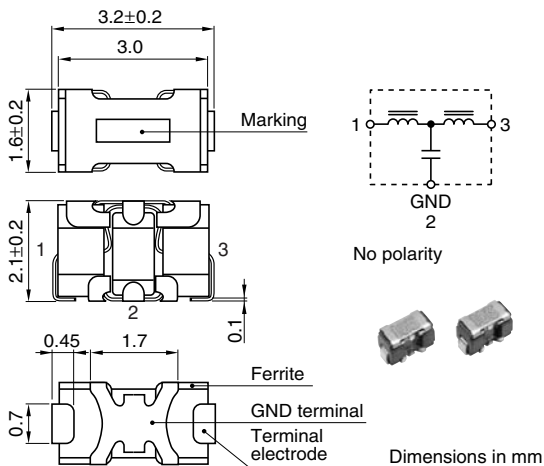
FEATURES

- These T-type EMC filters comprise ferrite beads and chip capacitors and are engineered to handle high current levels.
- The series offers even greater attenuation characteristics when used in a stable circuit on the ground.
- The ACH series is ideal for high-density circuit design, since the series is vertically mounted and does not require much mounting space.
- Because guarantee temperature range is -40 to $+125^{\circ}\text{C}$, it is possible to use in strict environmental condition.
- Available for reflow soldering.

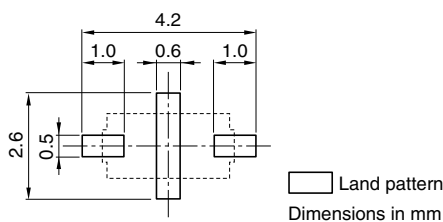
APPLICATIONS

Home electronic equipment, (TVs, VCRs, CD players, DAT players, electric musical instruments, PCs, etc.), office automation equipment (computers, terminals, stand-alone word processors, fax machines, etc.), factory automation equipment (robots, numerical control devices, process controllers, etc.), automotive electronics (car navigation, ECU, etc.)

SHAPES AND DIMENSIONS/CIRCUIT DIAGRAM



RECOMMENDED PC BOARD PATTERN REFLOW SOLDERING



PRODUCT IDENTIFICATION

ACH 32C - 103 - T □□□
(1) (2) (3) (4) (5)

- (1) Series name
- (2) Dimensions
32C: 3216 type(3.2×1.6mm)
- (3) Capacitance
103: 10000pF
- (4) Packaging style
T: ϕ 180mm reel taping
- (5) TDK internal code

TEMPERATURE RANGES

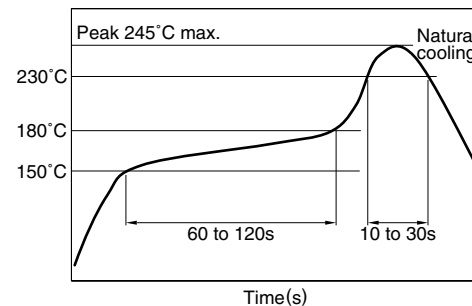
| | |
|----------------------|---------------------------------|
| Operating | -40 to $+125^{\circ}\text{C}$ |
| Storage(After mount) | -40 to $+125^{\circ}\text{C}$ |

PACKAGING STYLE AND QUANTITIES

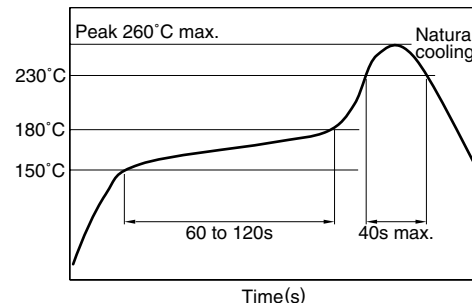
| | | |
|-----------------|--------------|------------------|
| Packaging style | Reel | Quantity |
| Taping | ϕ 180mm | 2000 pieces/reel |

RECOMMENDED SOLDERING CONDITIONS

RECOMMENDED TEMPERATURE PROFILE FOR LEAD-FREE SOLDER



REFLOW PROFILE FOR SOLDER HEAT RESISTANCE



- Conformity to RoHS Directive: This means that, in conformity with EU Directive 2002/95/EC, lead, cadmium, mercury, hexavalent chromium, and specific bromine-based flame retardants, PBB and PBDE, have not been used, except for exempted applications.
- Please contact our Sales office when your application is considered the following:
The device's failure or malfunction may directly endanger human life (e.g. application for automobile/aircraft/medical/nuclear power devices, etc.)

• All specifications are subject to change without notice.

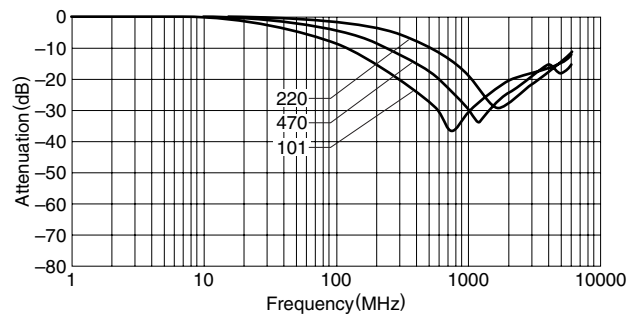
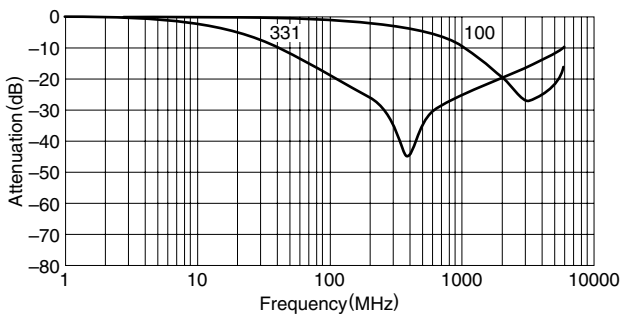
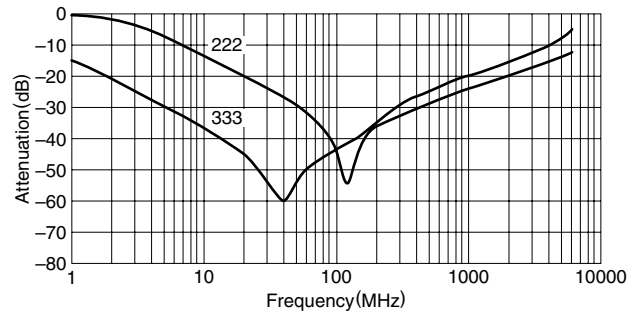
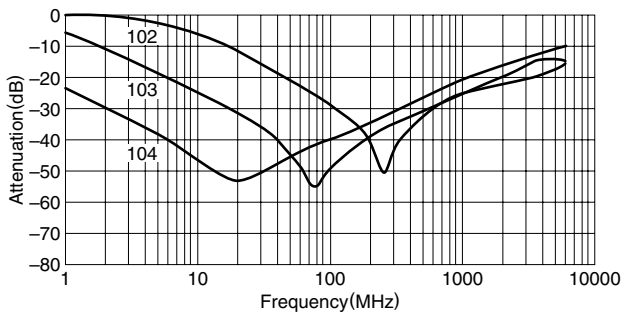
ELECTRICAL CHARACTERISTICS

| Part No. | Rated voltage Edc(V)max. | Rated current (A)max. | Insulation resistance (M Ω)min. | DC resistance (m Ω)max. | Guaranteed attenuation (dB) | Guaranteed frequency bandwidth (MHz) |
|-----------------|-----------------------------|--------------------------|--|------------------------------------|-----------------------------------|--|
| ACH32C-100-T001 | 50 | 6 | 100 | 2 | -15 | 2000 to 6000 |
| ACH32C-220-T001 | 50 | 6 | 100 | 2 | -15 | 1300 to 2500 |
| ACH32C-470-T001 | 50 | 6 | 100 | 2 | -15 | 650 to 2500 |
| ACH32C-101-T001 | 50 | 6 | 100 | 2 | -20 | 450 to 1300 |
| ACH32C-331-T001 | 50 | 6 | 100 | 2 | -20 | 200 to 800 |
| ACH32C-102-T001 | 50 | 6 | 100 | 2 | -25 | 100 to 350 |
| ACH32C-222-T001 | 50 | 6 | 100 | 2 | -25 | 55 to 300 |
| ACH32C-103-T001 | 50 | 6 | 100 | 2 | -25 | 30 to 200 |
| ACH32C-333-T001 | 50 | 6 | 100 | 2 | -25 | 10 to 300 |
| ACH32C-104-T001 | 50 | 6 | 100 | 2 | -25 | 3.5 to 200 |

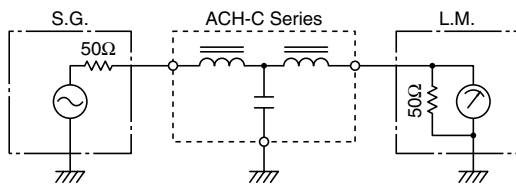
TYPICAL ELECTRICAL CHARACTERISTICS

ATTENUATION vs. FREQUENCY CHARACTERISTICS

(Glass epoxy coated double side mounting PCB)



CIRCUIT DIAGRAM



3-terminal Filters For Power Line

Conformity to RoHS Directive

ACH Series ACH3218, ACH4518

FEATURES

- The ACH series consists of products with superior attenuation characteristics, in which the T-type filter circuit is magnetically shielded with ferrite.
- The series offers even greater attenuation characteristics when used in a stable circuit on the ground.
- The ACH series is ideal for high-density circuit design, since the series is vertically mounted and does not require much mounting space.
- Available for reflow soldering.
- It is a product conforming to RoHS directive.

PRODUCT IDENTIFICATION

| | | | | | | | | |
|-----|------|-----|-----|-----|---|---|---|---|
| ACH | 3218 | - | 223 | - | T | D | □ | □ |
| (1) | (2) | (3) | (4) | (5) | | | | |

- (1) Series name
 (2) Dimensions
 (3) Type
 (4) Packaging style
 (5) TDK internal code

TEMPERATURE RANGES

| | |
|----------------------|---------------|
| Operating | -40 to +125°C |
| Storage(After mount) | -40 to +125°C |

PACKAGING STYLE AND QUANTITIES

| | |
|-----------------|------------------|
| Packaging style | Quantity |
| Taping | 1000 pieces/reel |

HANDLING AND PRECAUTIONS

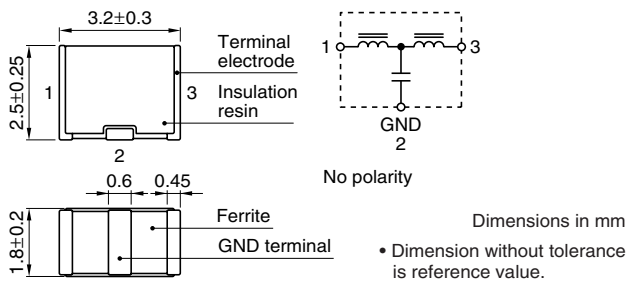
- Before soldering, be sure to preheat components. The preheating temperature should be set so that the temperature difference between the solder temperature and product temperature does not exceed 150°C.
- After mounting components onto the printed circuit board, do not apply stress through board bending or mishandling.
- The inductance value may change due to magnetic saturation if the current exceeds the rated maximum.
- Do not expose the inductors to stray magnetic fields.
- Avoid static electricity discharge during handling.
- When hand soldering, apply the soldering iron to the printed circuit board only. Temperature of the iron tip should not exceed 350°C. Soldering time should not exceed 3 seconds.

• Conformity to RoHS Directive: This means that, in conformity with EU Directive 2002/95/EC, lead, cadmium, mercury, hexavalent chromium, and specific bromine-based flame retardants, PBB and PBDE, have not been used, except for exempted applications.

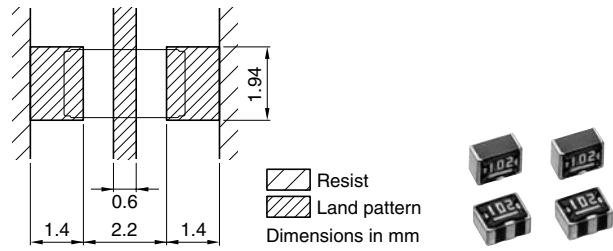
• Please contact our Sales office when your application is considered the following:
 The device's failure or malfunction may directly endanger human life (e.g. application for automobile/aircraft/medical/nuclear power devices, etc.)

• All specifications are subject to change without notice.

ACH3218 TYPE SHAPES AND DIMENSIONS/CIRCUIT DIAGRAM



RECOMMENDED PC BOARD PATTERN REFLOW SOLDERING

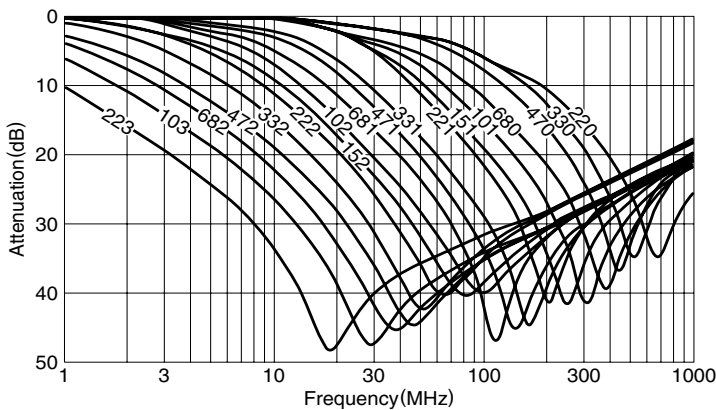


ELECTRICAL CHARACTERISTICS

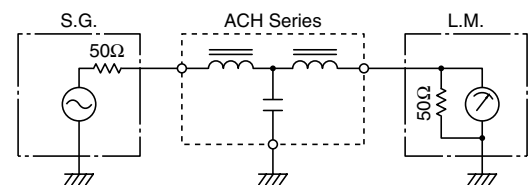
| Part No. | 25dB attenuation frequency range (MHz) | Rated voltage Edc (V)max. | Rated current (A)max. | DC resistance (Ω)max. [Terminal No.1 to 3] | Insulation resistance (M Ω)min. [Terminal No.1 to 2/No.2 to 3] |
|-------------|--|---------------------------|-----------------------|---|--|
| ACH3218-223 | 11 to 55 | 20 | 1.5 | 0.06 | 1000 |
| ACH3218-103 | 17 to 60 | 20 | 1.5 | 0.06 | 1000 |
| ACH3218-682 | 22 to 75 | 20 | 1.5 | 0.06 | 1000 |
| ACH3218-472 | 30 to 85 | 20 | 1.5 | 0.06 | 1000 |
| ACH3218-332 | 37 to 90 | 20 | 1.5 | 0.06 | 1000 |
| ACH3218-222 | 45 to 105 | 20 | 1.5 | 0.06 | 1000 |
| ACH3218-152 | 60 to 115 | 20 | 1.5 | 0.06 | 1000 |
| ACH3218-102 | 80 to 140 | 20 | 1.5 | 0.06 | 1000 |
| ACH3218-681 | 95 to 150 | 20 | 1.5 | 0.06 | 1000 |
| ACH3218-471 | 120 to 180 | 20 | 1.5 | 0.06 | 1000 |
| ACH3218-331 | 130 to 210 | 20 | 1.5 | 0.06 | 1000 |
| ACH3218-221 | 170 to 250 | 20 | 1.5 | 0.06 | 1000 |
| ACH3218-151 | 205 to 280 | 20 | 1.5 | 0.06 | 1000 |
| ACH3218-101 | 265 to 340 | 20 | 1.5 | 0.06 | 1000 |
| ACH3218-680 | 340 to 420 | 20 | 1.5 | 0.06 | 1000 |
| ACH3218-470 | 420 to 500 | 20 | 1.5 | 0.06 | 1000 |
| ACH3218-330 | 500 to 600 | 20 | 1.5 | 0.06 | 1000 |
| ACH3218-220 | 600 to 700 | 20 | 1.5 | 0.06 | 1000 |

TYPICAL ELECTRICAL CHARACTERISTICS

ATTENUATION vs. FREQUENCY CHARACTERISTICS

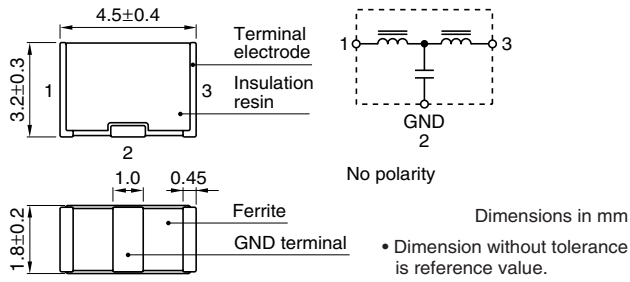


MEASURING CIRCUIT

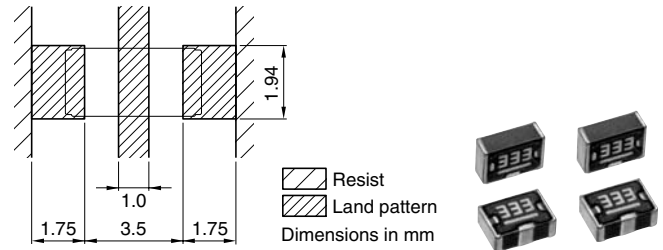


ACH4518 TYPE

SHAPES AND DIMENSIONS/CIRCUIT DIAGRAM



RECOMMENDED PC BOARD PATTERN REFLOW SOLDERING

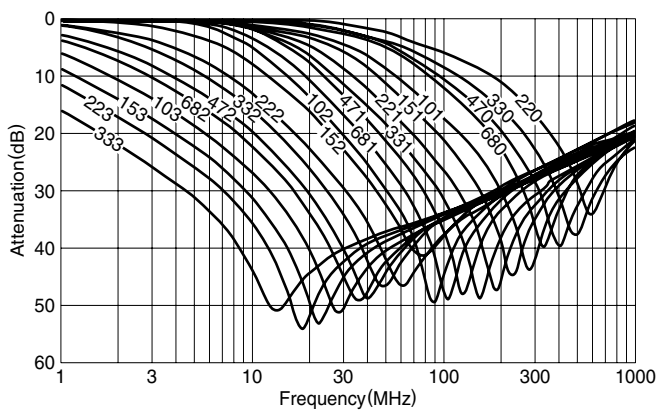


ELECTRICAL CHARACTERISTICS

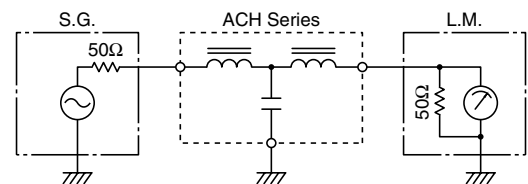
| Part No. | 25dB attenuation frequency range (MHz) | Rated voltage E _{dc} (V)max. | Rated current (A)max. | DC resistance (Ω)max. [Terminal No.1 to 3] | Insulation resistance (MΩ)min. [Terminal No.1 to 2/No.2 to 3] |
|-------------|--|---------------------------------------|-----------------------|--|---|
| ACH4518-333 | 6 to 60 | 50 | 2.0 | 0.06 | 1000 |
| ACH4518-223 | 9 to 65 | 50 | 2.0 | 0.06 | 1000 |
| ACH4518-153 | 11 to 70 | 50 | 2.0 | 0.06 | 1000 |
| ACH4518-103 | 15 to 75 | 50 | 2.0 | 0.06 | 1000 |
| ACH4518-682 | 20 to 85 | 50 | 2.0 | 0.06 | 1000 |
| ACH4518-472 | 25 to 90 | 50 | 2.0 | 0.06 | 1000 |
| ACH4518-332 | 35 to 100 | 50 | 2.0 | 0.06 | 1000 |
| ACH4518-222 | 40 to 110 | 50 | 2.0 | 0.06 | 1000 |
| ACH4518-152 | 50 to 130 | 50 | 2.0 | 0.06 | 1000 |
| ACH4518-102 | 65 to 150 | 50 | 2.0 | 0.06 | 1000 |
| ACH4518-681 | 75 to 160 | 50 | 2.0 | 0.06 | 1000 |
| ACH4518-471 | 95 to 180 | 50 | 2.0 | 0.06 | 1000 |
| ACH4518-331 | 115 to 205 | 50 | 2.0 | 0.06 | 1000 |
| ACH4518-221 | 150 to 250 | 50 | 2.0 | 0.06 | 1000 |
| ACH4518-151 | 190 to 290 | 50 | 2.0 | 0.06 | 1000 |
| ACH4518-101 | 235 to 335 | 50 | 2.0 | 0.06 | 1000 |
| ACH4518-680 | 290 to 395 | 50 | 2.0 | 0.06 | 1000 |
| ACH4518-470 | 360 to 460 | 50 | 2.0 | 0.06 | 1000 |
| ACH4518-330 | 450 to 550 | 50 | 2.0 | 0.06 | 1000 |
| ACH4518-220 | 530 to 650 | 50 | 2.0 | 0.06 | 1000 |

TYPICAL ELECTRICAL CHARACTERISTICS

ATTENUATION vs. FREQUENCY CHARACTERISTICS

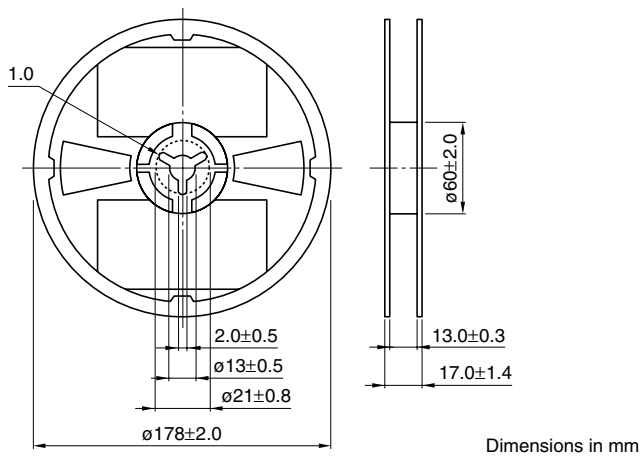


MEASURING CIRCUIT

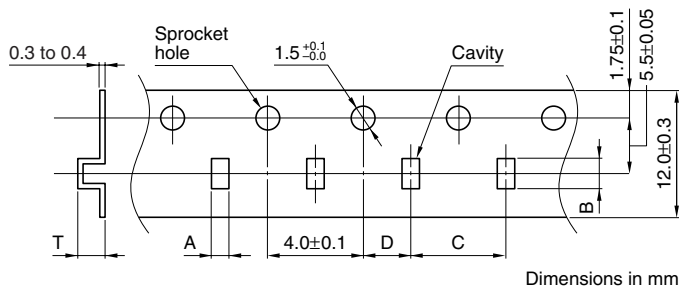


PACKAGING STYLES

REEL DIMENSIONS



TAPE DIMENSIONS



| Type | A | B | C | D | T |
|--------|---------------|---------------|---------------|----------------|---------|
| 321825 | 2.2 ± 0.2 | 3.7 ± 0.2 | 4.0 ± 0.1 | 2.0 ± 0.05 | 3.3max. |
| 451832 | 2.2 ± 0.2 | 5.2 ± 0.2 | 4.0 ± 0.1 | 2.0 ± 0.05 | 3.8max. |

