

阅读申明

- 1.本站收集的数据手册和产品资料都来自互联网，版权归原作者所有。如读者和版权方有任何异议请及时告之，我们将妥善解决。
- 2.本站提供的中文数据手册是英文数据手册的中文翻译，其目的是协助用户阅读，该译文无法自动跟随原稿更新，同时也可能存在翻译上的不当。建议读者以英文原稿为参考以便获得更精准的信息。
- 3.本站提供的产品资料，来自厂商的技术支持或者使用者的心得体会等，其内容可能存在描述上的差异，建议读者做出适当判断。
- 4.如需与我们联系，请发邮件到marketing@iczoom.com，主题请标有“数据手册”字样。

Read Statement

1. The datasheets and other product information on the site are all from network reference or other public materials, and the copyright belongs to the original author and original published source. If readers and copyright owners have any objections, please contact us and we will deal with it in a timely manner.
2. The Chinese datasheets provided on the website is a Chinese translation of the English datasheets. Its purpose is for reader's learning exchange only and do not involve commercial purposes. The translation cannot be automatically updated with the original manuscript, and there may also be improper translations. Readers are advised to use the English manuscript as a reference for more accurate information.
3. All product information provided on the website refer to solutions from manufacturers' technical support or users the contents may have differences in description, and readers are advised to take the original article as the standard.
4. If you have any questions, please contact us at marketing@iczoom.com and mark the subject with "Datasheets" .

EMC Components

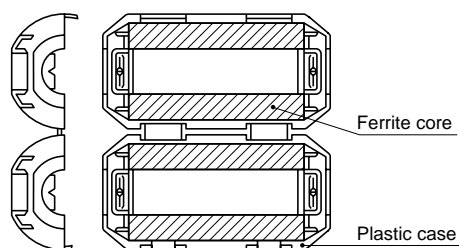
Clamp Filters For Cable

ZCAT Series

FEATURES

- Unique plastic case ensures simple, convenient installation and includes a self-holding mechanism to prevent slippage on cables.
- Ferrite core provides excellent absorption of high-frequency EMC.
- Highly effective as countermeasure against common mode EMC without adverse effect on signal quality.
- Large core size prevents saturation during large signal surges.

INTERNAL CONSTRUCTION



APPLICATIONS

Personal computers, word processors, monitors, hard disk drives, digital telephones, audio devices, electronic musical instruments, video games, copiers and facsimiles.

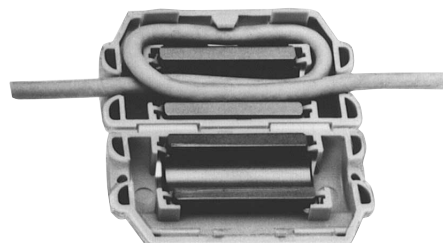
PRODUCT IDENTIFICATION

ZCAT 24 36 - 13 30 A - M - BK
(1) (2) (3) (4) (5) (6) (7) (8)

- (1) Series name
 (2) Outer dimensions(mm)
 (3) Length(mm)
 (4) Inner dimensions(mm)
 (5) Material code
 (6) Fixed type code
 A: Cable fixed
 Hold the cable to secure it with the main body
 AP:Cable fixed
 (with lock mechanism)
 B: Clamp fixed
 C: Cable coil securing type
 (Coil the cable one time within the case to fix it/with lock mechanism.)
 D: Flat cable type
 DT: Flat cable type (Hold with adhesive pad.)
 Non code: Band fixed
 (Secure the cable and main body with the nylon belt.)
 (7) TDK internal code
 M:Standard type
 Non code: High impedance type
 (8) Outer color code
 BK: Black
 Non code: Gray



ZCAT-C TYPE



PACKAGING STYLE AND QUANTITIES

Part No.	Quantity
ZCAT3035	140 pieces/box
ZCAT2017-B	350 pieces/box
ZCAT2235	350 pieces/box
ZCAT2436	350 pieces/box
ZCAT2032	400 pieces/box
ZCAT2035	400 pieces/box
ZCAT2132	400 pieces/box
ZCAT2749	400 pieces/box
ZCAT1730	500 pieces/box
ZCAT2017	800 pieces/box
ZCAT1325	900 pieces/box
ZCAT1518	900 pieces/box
ZCAT1525	900 pieces/box
ZCAT4625-D	240 pieces/box
ZCAT6819-D	160 pieces/box

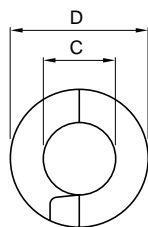
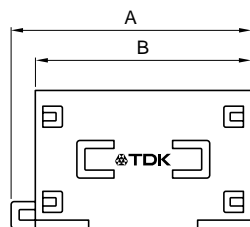
EMC Components

ZCAT Series

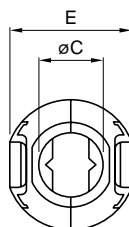
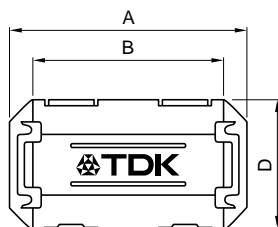
Clamp Filters For Cable

SHAPES AND DIMENSIONS

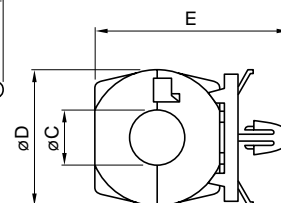
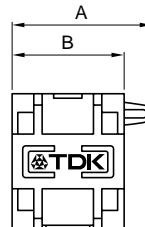
ZCAT TYPE



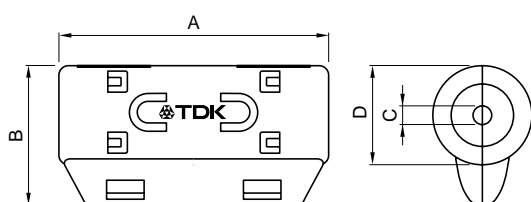
ZCAT-A, ZCAT-AP TYPE



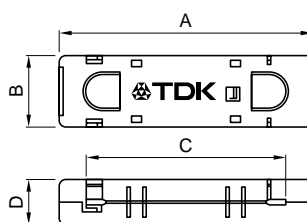
ZCAT-B TYPE



ZCAT-C TYPE



ZCAT-D TYPE



Applicable cable thickness:
1.3mm max.

Dimensions in mm

Part No.	A	B	øC	øD	E	Applicable cable outer dia.	Weight(g)	Impedance freq. characteristics Fig.
ZCAT1518-0730-M(-BK)*1	22±1	18±1	7±1	15±1	–	7max.	6	1
ZCAT1518-0730(BK)*2	22±1	18±1	7±1	15±1	–	7max.	6	2
ZCAT2017-0930-M(-BK)	21±1	17±1	9±1	20±1	–	9max.	11	3
ZCAT2032-0930-M(-BK)*1	36±1	32±1	9±1	19.5±1	–	9max.	22	4
ZCAT2032-0930(-BK)*2	36±1	32±1	9±1	19.5±1	–	9max.	22	5
ZCAT2132-1130-M(-BK)*1	36±1	32±1	11±1	20.5±1	–	11max.	22	6
ZCAT2132-1130(-BK)*2	36±1	32±1	11±1	20.5±1	–	11max.	22	7
ZCAT3035-1330-M(-BK)*1	39±1	34±1	13±1	30±1	–	13max.	63	8
ZCAT3035-1330(-BK)*2	39±1	34±1	13±1	30±1	–	13max.	63	9
ZCAT1525-0430AP-M(-BK)	25±1	20±1	4±1	15±1	11.5±1	2.5 to 4(USB)	7	6
ZCAT1325-0530A-M(-BK)*1	25±1	20±1	5±1	12.8±1	11.2±1	3 to 5(USB)	7	6
ZCAT1325-0530A(-BK)	25±1	20±1	5±1	12.8±1	11.2±1	3 to 5(USB)	7	7
ZCAT1730-0730A-M(-BK)	30±1	23±1	7±1	16.5±1	15±1	4 to 7(USB/IEEE1394)	12	6
ZCAT2035-0930A-M(-BK)*1	35±1	28±1	9±1	19.5±1	17.4±1	6 to 9	22	4
ZCAT2035-0930A(-BK)	35±1	28±1	9±1	19.5±1	17.4±1	6 to 9	22	5
ZCAT2235-1030A-M(-BK)	35±1	28±1	10±1	21.5±1	20±1	8 to 10	27	4
ZCAT2436-1330A-M(-BK)	36±1	29±1	13±1	23.5±1	22±1	10 to 13	29	10
ZCAT2017-0930B-M(-BK)	21±1	17±1	9±1	20±1	28.5±1	9max.	12	3
ZCAT2749-0430C-M(-BK)	49±1	27±1	4.5±1	19.5±1	–	4.5max.	26	11
ZCAT4625-3430D(-BK)	45.5±1	24.5±1	34±1	12±1	–	For 26 wires flat cable	32	12
ZCAT4625-3430DT(-BK)*3	45.5±1	24.5±1	34±1	13±1	–	For 26 wires flat cable	32	12
ZCAT6819-5230D(-BK)	67.5±1	18.5±1	52±1	16±1	–	For 40 wires flat cable	58	12
ZCAT6819-5230DT(-BK)*3	67.5±1	18.5±1	52±1	17±1	–	For 40 wires flat cable	58	12

*1 Set M marking on product.

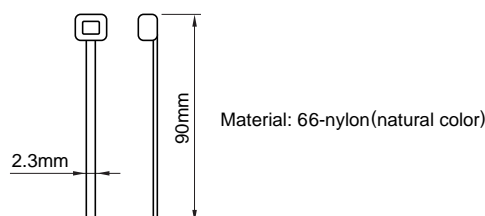
*2 These products are delivered with fixed band.

*3 ZCAT-DT type: Adapted for flat cables and hold with adhesive pad.

• ZCAT-B type: Clamp fixed type installation hole diameter ø4.8 to 4.9mm, thickness of board 0.5 to 2mm.

• ZCAT-AP, ZCAT-C type: Once closed, the case will not be easily opened manually.

STRUCTURE OF THE MOUNTING BAND



△ Specifications which provide more details for the proper and safe use of the described product are available upon request.
All specifications are subject to change without notice.

EMC Components

Clamp Filters For Cable

ZCAT Series

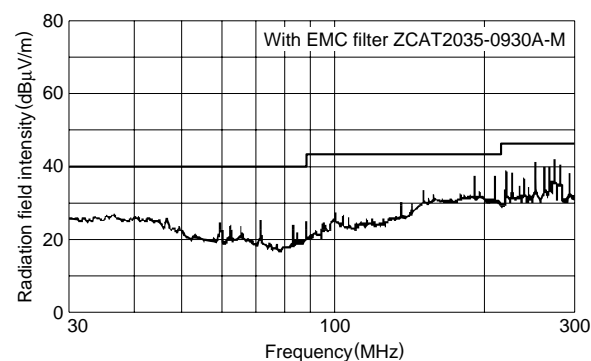
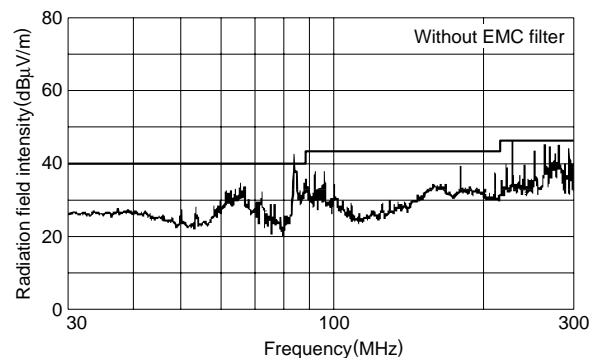
ELECTRICAL CHARACTERISTICS

Part No.	Impedance (Ω)min.[50 to 500MHz]
ZCAT1518-0730-M	35
ZCAT2017-0930-M	35
ZCAT2032-0930-M	80
ZCAT2132-1130-M	50
ZCAT3035-1330-M	100
ZCAT1525-0430AP-M	50
ZCAT1325-0530A-M	50
ZCAT1730-0730A-M	50
ZCAT2035-0930A-M	80
ZCAT2235-1030A-M	80
ZCAT2436-1330A-M	50
ZCAT2017-0930B-M	35
ZCAT2749-0430C-M	80
ZCAT4625-3430D(T)	35
ZCAT6819-5230D(T)	35

- Test conditions: R-X meter at unloaded condition, ϕ 1mm solder plated copper wire passes through.

TYPICAL EMC SUPPRESSION EFFECTS

RADIATION LEVEL vs. FREQUENCY CHARACTERISTICS



TYPICAL ELECTRICAL CHARACTERISTICS

IMPEDANCE vs. FREQUENCY CHARACTERISTICS

ZCAT1518-0730-M

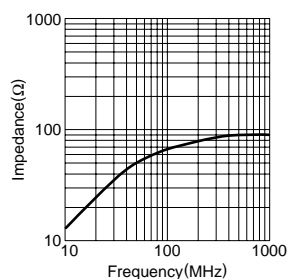


Fig.1

ZCAT1518-0730

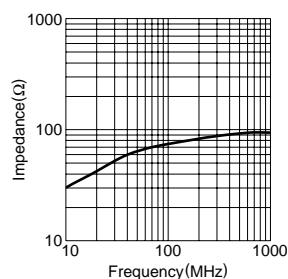


Fig.2

ZCAT2017-0930-M ZCAT2017-0930B-M

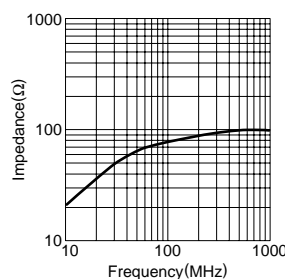


Fig.3

ZCAT2032-0930-M ZCAT2035-0930A-M ZCAT2235-1030A-M

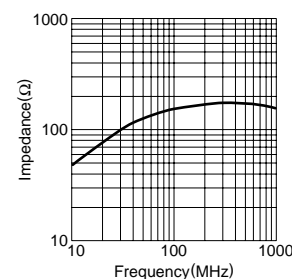


Fig.4

ZCAT2032-0930 ZCAT2035-0930A

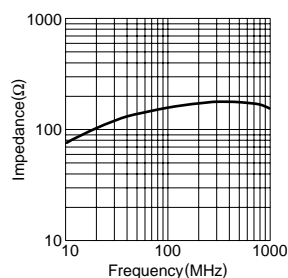


Fig.5

ZCAT2132-1130-M ZCAT1325-0530A-M ZCAT1525-0430AP-M ZCAT1730-0730A-M

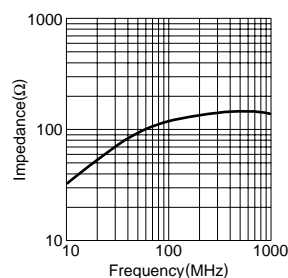


Fig.6

ZCAT2132-1130 ZCAT1325-0530A

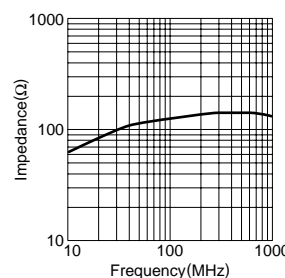


Fig.7

ZCAT3035-1330-M

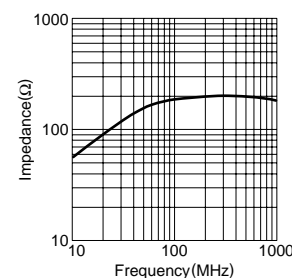


Fig.8

EMC Components

ZCAT Series

Clamp Filters
For Cable

TYPICAL ELECTRICAL CHARACTERISTICS IMPEDANCE vs. FREQUENCY CHARACTERISTICS

ZCAT3035-1330

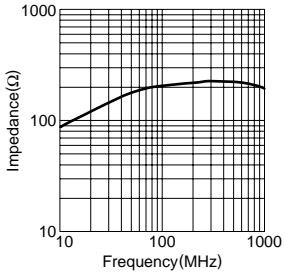


Fig.9

ZCAT2436-1330A-M

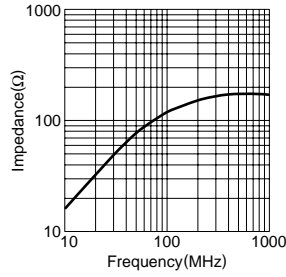


Fig.10

ZCAT2749-0430C-M(2TS)

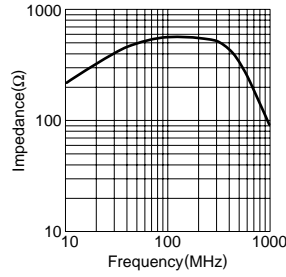


Fig.11

**ZCAT4625-3430D
ZCAT6819-5230D**

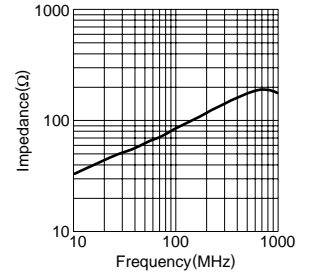


Fig.12