

阅读申明

- 1.本站收集的数据手册和产品资料都来自互联网，版权归原作者所有。如读者和版权方有任何异议请及时告之，我们将妥善解决。
- 2.本站提供的中文数据手册是英文数据手册的中文翻译，其目的是协助用户阅读，该译文无法自动跟随原稿更新，同时也可能存在翻译上的不当。建议读者以英文原稿为参考以便获得更精准的信息。
- 3.本站提供的产品资料，来自厂商的技术支持或者使用者的心得体会等，其内容可能存在描述上的差异，建议读者做出适当判断。
- 4.如需与我们联系，请发邮件到marketing@iczoom.com，主题请标有“数据手册”字样。

Read Statement

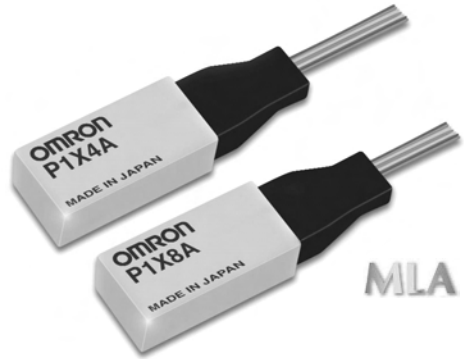
1. The datasheets and other product information on the site are all from network reference or other public materials, and the copyright belongs to the original author and original published source. If readers and copyright owners have any objections, please contact us and we will deal with it in a timely manner.
2. The Chinese datasheets provided on the website is a Chinese translation of the English datasheets. Its purpose is for reader's learning exchange only and do not involve commercial purposes. The translation cannot be automatically updated with the original manuscript, and there may also be improper translations. Readers are advised to use the English manuscript as a reference for more accurate information.
3. All product information provided on the website refer to solutions from manufacturers' technical support or users the contents may have differences in description, and readers are advised to take the original article as the standard.
4. If you have any questions, please contact us at marketing@iczoom.com and mark the subject with "Datasheets" .

4ch / P1X4A

8ch / P1X8A

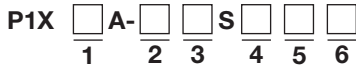
World's smallest CWDM Mux/ Demux achieved by combining Omron's MLA with Thin Film Filters in a proprietary structure (Patent Pending).

- Ultra small form factor
- 4+1 and 8+1 (1310 express channel) models available
- Space saving single-sided entry ribbon fibre
- Versatile free mounting direction
- CWDM and LX4 wavelengths available
- Tap case package available
- Various fibre and connector options available



Ordering Information

Model Number Legend



- | | | |
|--|---|---|
| <p>1. Number of channels
4 or 8</p> <p>2. Classification
MX: Mux,
DX: Demux,
MD: Mux & Demux</p> | <p>3. Starting centre wavelength
e.g. 1471, 1511, 1531</p> <p>4. Channel spacing
e.g. ITU-T G.694.2
20nm: 20</p> <p>5. Case type
Blank: Standard
T: Tap case</p> | <p>6. Cable length
Blank: Standard 1000mm
(or insert length required in mm)</p> <p>7. Connector type
Blank: Ribbon fibre only (or insert one of the following: SC, FC, MU, LC, SCAPC, FCAPC, LCAPC) - Other types of connectors available, (eg. E2000-APC and configurations) contact Omron for information</p> |
|--|---|---|

Application Examples

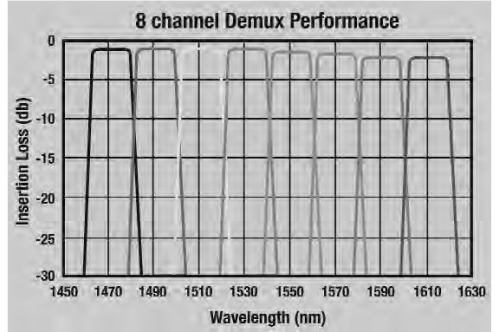
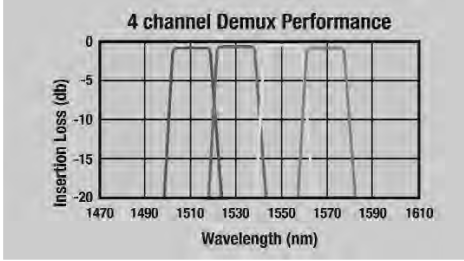
- CWDM
- OADM (Optical Add/Drop Multiplexer)
- WDM-PON
- 3G Basestations
- Transponder, Transceiver
- CATV

Specifications

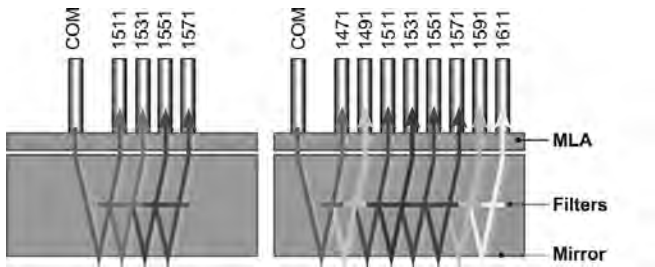
	P1X4A	P1X8A
Number of Channels	4	8
Centre Wavelength	1471,1491,1511,1531,1551, 1571, 1591,1611nm (standard CWDM) 1275.7, 1300.2, 1324.7, 1349.2 (LX4) (Other wavelengths available)	1471,1491,1511,1531,1551, 1571,1591,1611nm (standard CWDM) (Other wavelengths available)
Pass Band Width	≥13nm (13.4nm for LX4)	≥13nm
Insertion Loss	≤ 2.0dB (Typ. 1.2dB)	≤ 2.7dB (Typ. 2.3dB)
Isolation	≥30dB (Typ. 35dB)	≥30dB(Typ. 35dB)
Return Loss	≥35dB (Typ. 40dB)	≥35dB (Typ. 40dB)
Optical Power	100mW	100mW
Operating Temperature	0 to 70°C	0 to 70°C
Storage Temperature	-40 to 85°C	-40 to 85°C
Dimensions	W7.2 x L14.5 x H4.7mm	W7.2 x L14.5 x H4.7mm

Note: Typical specifications are at room temperature and include connectors

■ Performance

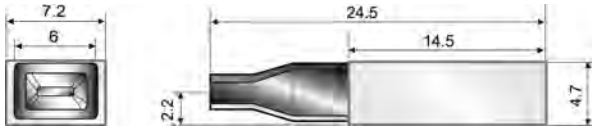


■ Structures

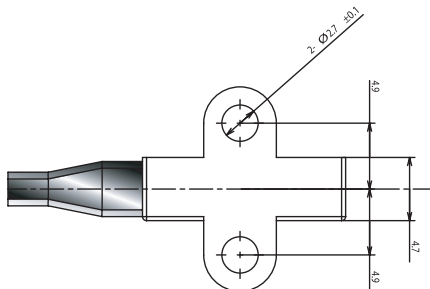


■ Dimensions (mm)

Standard package



Tap case package



Omron Electronic Components Europe BV reserves the right to make any changes to the specifications of the products described at its sole discretion and without prior notice.

For full terms and conditions, visit our website www.omroncomponents.com and click on legal notices.

ALL DIMENSIONS SHOWN ARE IN MILLIMETRES.

To convert millimetres into inches, multiply by 0.03937. To convert grams into ounces, multiply by 0.03527.