

## 阅读申明

- 1.本站收集的数据手册和产品资料都来自互联网，版权归原作者所有。如读者和版权方有任何异议请及时告之，我们将妥善解决。
- 2.本站提供的中文数据手册是英文数据手册的中文翻译，其目的是协助用户阅读，该译文无法自动跟随原稿更新，同时也可能存在翻译上的不当。建议读者以英文原稿为参考以便获得更精准的信息。
- 3.本站提供的产品资料，来自厂商的技术支持或者使用者的心得体会等，其内容可能存在描述上的差异，建议读者做出适当判断。
- 4.如需与我们联系，请发邮件到marketing@iczoom.com，主题请标有“数据手册”字样。

## Read Statement

1. The datasheets and other product information on the site are all from network reference or other public materials, and the copyright belongs to the original author and original published source. If readers and copyright owners have any objections, please contact us and we will deal with it in a timely manner.
2. The Chinese datasheets provided on the website is a Chinese translation of the English datasheets. Its purpose is for reader's learning exchange only and do not involve commercial purposes. The translation cannot be automatically updated with the original manuscript, and there may also be improper translations. Readers are advised to use the English manuscript as a reference for more accurate information.
3. All product information provided on the website refer to solutions from manufacturers' technical support or users the contents may have differences in description, and readers are advised to take the original article as the standard.
4. If you have any questions, please contact us at marketing@iczoom.com and mark the subject with "Datasheets" .

# Power Supplies

## DC to AC Inverters

### On-board type, Non-dimming, 6W, For 1 and 2 Bulbs

## CXA Series CXA-M10A-L/-M10L-L/-M10M-L

#### FEATURES

- The CXA-M10 series inverters for 2-cold cathode fluorescent lamps support a wide range of CCFL devices and are characterized by highly stable output current.
- Employing a resonance-type push-pull circuit, these inverters deliver sine wave output with very low noise levels.
- Through the use of four different connection methods and combinations of 1 and 2 lamps, different output currents can be selected.
- Compact, lightweight printed circuit board design.
- High efficiency (typically 80%).

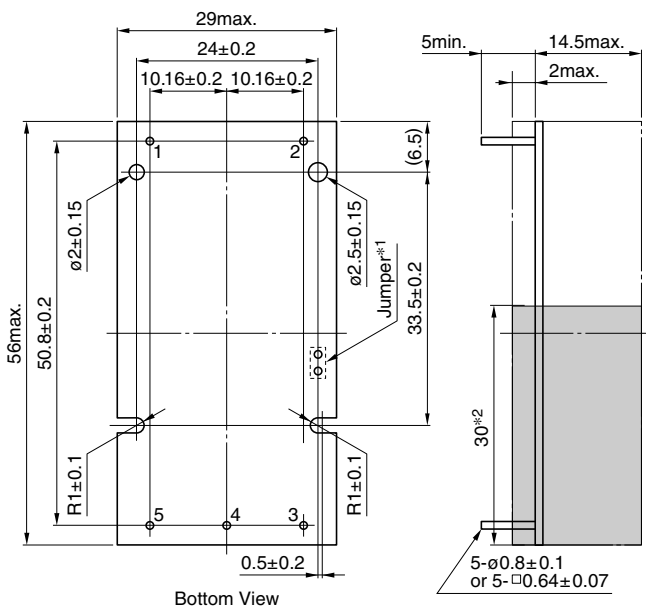
#### APPLICATIONS

Industrial and other equipment employing LCD panels, products employing small lamps, information terminal devices.

#### TEMPERATURE AND HUMIDITY RANGES

Temperature range (°C)	Operating	-10 to +60
	Storage	-20 to +85
Humidity range(%RH)		95max.
		[Maximum wet-bulb temperature 38°C]

#### SHAPES AND DIMENSIONS CXA-M10A-L/-M10L-L/-M10M-L



\*1 Terminal numbers 2 and 5 are connected by the jumper.  
Cut this jumper to let the secondary side float with respect to the primary side.

Weight: 21g typ.

\*2 : High-voltage generator (The entire surface within a range of 30mm away from the end of the base in the output)

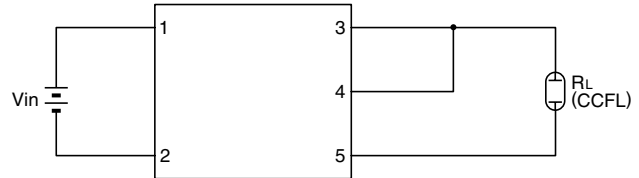
Dimensions in mm

#### TERMINAL NUMBERS AND FUNCTIONS

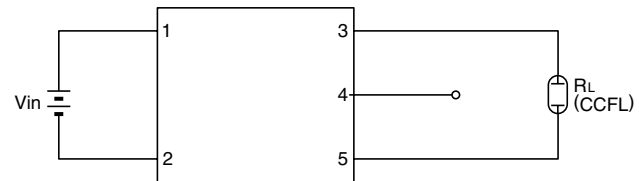
Terminal No.	Functions	CXA-M10A-L	CXA-M10L-L	CXA-M10M-L	Symbol
1	Input voltage Edc	0 to 6V 5V[nom.]	0 to 14.4V 12V[nom.]	0 to 28.8V 24V[nom.]	V <sub>in</sub>
2		0V	0V	0V	GND
3	Output 1[High voltage] Irms	5mA	5mA	5mA	V <sub>HIGH1</sub>
4	Output 2[High voltage] Irms	5mA	5mA	5mA	V <sub>HIGH2</sub>
5	Output[Low voltage]	0V	0V	0V	V <sub>LOW</sub>

#### CIRCUIT DIAGRAMS

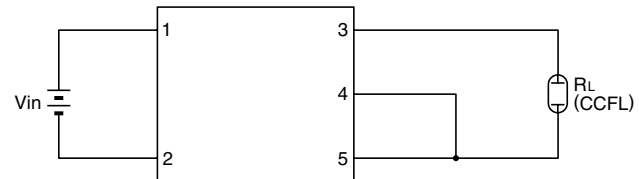
##### CONNECTION A



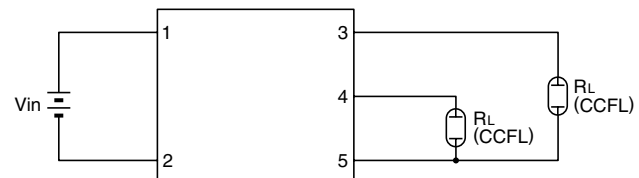
##### CONNECTION B



##### CONNECTION C



##### CONNECTION D



# Power Supplies

## CXA Series CXA-M10A-L/-M10L-L/-M10M-L

### DC to AC Inverters

### On-board type, Non-dimming, 6W, For 1 and 2 Bulbs

#### ELECTRICAL CHARACTERISTICS

##### 5V INPUT TYPE/CXA-M10A-L

Connections	Items	Unit	Symbol	Specifications			Conditions		
				min.	typ.	max.	V <sub>in</sub> (V)	T <sub>a</sub> (°C)	R <sub>L</sub> (kΩ)
A	Output current I <sub>rms</sub>	mA	I <sub>out</sub>	9	10	11	5±1%	23±5	40
				8	10	12	5±5%	-10 to +60	30 to 50
	Input current I <sub>dc</sub>	A	I <sub>in</sub>	—	1	1.5	5±5%	-10 to +60	30 to 50
	Oscillation frequency	kHz	F <sub>L</sub>	23	28	33	5±5%	-10 to +60	30 to 50
	Open circuit output voltage E <sub>rms</sub>	V	V <sub>open</sub>	1000	1200	—	5±5%	-10 to +60	∞
Output power	W	P <sub>out</sub>	—	—	6	5±5%	-10 to +60	—	
B	Output current I <sub>rms</sub>	mA	I <sub>out</sub>	5.1	6	6.5	5±1%	23±5	67
				4.5	6	7.1	5±5%	-10 to +60	50 to 84
	Input current I <sub>dc</sub>	A	I <sub>in</sub>	—	0.6	1	5±5%	-10 to +60	50 to 84
	Oscillation frequency	kHz	F <sub>L</sub>	27	32	37	5±5%	-10 to +60	50 to 84
	Open circuit output voltage E <sub>rms</sub>	V	V <sub>open</sub>	1000	1200	—	5±5%	-10 to +60	∞
Output power	W	P <sub>out</sub>	—	—	3.6	5±5%	-10 to +60	—	
C	Output current I <sub>rms</sub>	mA	I <sub>out</sub>	4.2	5	5.4	5±1%	23±5	80
				3.7	5	5.9	5±5%	-10 to +60	60 to 100
	Input current I <sub>dc</sub>	A	I <sub>in</sub>	—	0.6	0.9	5±5%	-10 to +60	60 to 100
	Oscillation frequency	kHz	F <sub>L</sub>	23	28	33	5±5%	-10 to +60	60 to 100
	Open circuit output voltage E <sub>rms</sub>	V	V <sub>open</sub>	1000	1200	—	5±5%	-10 to +60	∞
Output power	W	P <sub>out</sub>	—	—	3	5±5%	-10 to +60	—	
D	Output current I <sub>rms</sub>	mA	I <sub>out1</sub>	4.5	5	5.5	5±1%	23±5	80
			I <sub>out2</sub>	4.5	5	5.5	5±1%	23±5	80
			I <sub>out1</sub>	4	5	6	5±5%	-10 to +60	60 to 100
			I <sub>out2</sub>	4	5	6	5±5%	-10 to +60	60 to 100
	Input current I <sub>dc</sub>	A	I <sub>in</sub>	—	1	1.5	5±5%	-10 to +60	60 to 100
	Oscillation frequency	kHz	F <sub>L</sub>	23	28	33	5±5%	-10 to +60	60 to 100
	Open circuit output voltage E <sub>rms</sub>	V	V <sub>open</sub>	1000	1200	—	5±5%	-10 to +60	∞
	Output power	W	P <sub>out</sub>	—	—	3×2	5±5%	-10 to +60	—

# Power Supplies

## CXA Series CXA-M10A-L/-M10L-L/-M10M-L

### DC to AC Inverters

### On-board type, Non-dimming, 6W, For 1 and 2 Bulbs

#### ELECTRICAL CHARACTERISTICS

##### 12V INPUT TYPE/CXA-M10L-L

Connections	Items	Unit	Symbol	Specifications			Conditions		
				min.	typ.	max.	V <sub>in</sub> (V)	T <sub>a</sub> (°C)	R <sub>L</sub> (kΩ)
A	Output current I <sub>rms</sub>	mA	I <sub>out</sub>	9	10	11	12±1%	23±5	40
				8	10	12	12±5%	-10 to +60	30 to 50
	Input current I <sub>dc</sub>	A	I <sub>in</sub>	—	0.42	0.63	12±5%	-10 to +60	30 to 50
	Oscillation frequency	kHz	F <sub>L</sub>	23	28	33	12±5%	-10 to +60	30 to 50
	Open circuit output voltage E <sub>rms</sub>	V	V <sub>open</sub>	1000	1200	—	12±5%	-10 to +60	∞
Output power	W	P <sub>out</sub>	—	—	6	12±5%	-10 to +60	—	
B	Output current I <sub>rms</sub>	mA	I <sub>out</sub>	5.1	6	6.5	12±1%	23±5	67
				4.5	6	7.1	12±5%	-10 to +60	50 to 84
	Input current I <sub>dc</sub>	A	I <sub>in</sub>	—	0.27	0.41	12±5%	-10 to +60	50 to 84
	Oscillation frequency	kHz	F <sub>L</sub>	26	31	36	12±5%	-10 to +60	50 to 84
	Open circuit output voltage E <sub>rms</sub>	V	V <sub>open</sub>	1000	1200	—	12±5%	-10 to +60	∞
Output power	W	P <sub>out</sub>	—	—	3.6	12±5%	-10 to +60	—	
C	Output current I <sub>rms</sub>	mA	I <sub>out</sub>	4.3	5	5.5	12±1%	23±5	80
				3.8	5	6	12±5%	-10 to +60	60 to 100
	Input current I <sub>dc</sub>	A	I <sub>in</sub>	—	0.23	0.35	12±5%	-10 to +60	60 to 100
	Oscillation frequency	kHz	F <sub>L</sub>	23	28	33	12±5%	-10 to +60	60 to 100
	Open circuit output voltage E <sub>rms</sub>	V	V <sub>open</sub>	1000	1200	—	12±5%	-10 to +60	∞
Output power	W	P <sub>out</sub>	—	—	3	12±5%	-10 to +60	—	
D	Output current I <sub>rms</sub>	mA	I <sub>out1</sub>	4.5	5	5.5	12±1%	23±5	80
			I <sub>out2</sub>	4.5	5	5.5	12±1%	23±5	80
			I <sub>out1</sub>	4	5	6	12±5%	-10 to +60	60 to 100
			I <sub>out2</sub>	4	5	6	12±5%	-10 to +60	60 to 100
	Input current I <sub>dc</sub>	A	I <sub>in</sub>	—	0.42	0.63	12±5%	-10 to +60	60 to 100
	Oscillation frequency	kHz	F <sub>L</sub>	23	28	33	12±5%	-10 to +60	60 to 100
	Open circuit output voltage E <sub>rms</sub>	V	V <sub>open</sub>	1000	1200	—	12±5%	-10 to +60	∞
	Output power	W	P <sub>out</sub>	—	—	3×2	12±5%	-10 to +60	—

# Power Supplies

## CXA Series CXA-M10A-L/-M10L-L/-M10M-L

### DC to AC Inverters

### On-board type, Non-dimming, 6W, For 1 and 2 Bulbs

#### ELECTRICAL CHARACTERISTICS

##### 24V INPUT TYPE/CXA-M10M-L

Connections	Items	Unit	Symbol	Specifications			Conditions		
				min.	typ.	max.	Vin(V)	Ta(°C)	RL(kΩ)
A	Output current Irms	mA	Iout	9	10	11	24±1%	23±5	40
				8	10	12	24±5%	-10 to +60	30 to 50
	Input current Idc	A	Iin	—	0.21	0.33	24±5%	-10 to +60	30 to 50
	Oscillation frequency	kHz	FL	23	28	33	24±5%	-10 to +60	30 to 50
	Open circuit output voltage Erms	V	Vopen	1000	1200	—	24±5%	-10 to +60	∞
Output power	W	Pout	—	—	6	24±5%	-10 to +60	—	
B	Output current Irms	mA	Iout	5	6	6.4	24±1%	23±5	67
				4.4	6	7	24±5%	-10 to +60	50 to 84
	Input current Idc	A	Iin	—	0.14	0.21	24±5%	-10 to +60	50 to 84
	Oscillation frequency	kHz	FL	26	31	36	24±5%	-10 to +60	50 to 84
	Open circuit output voltage Erms	V	Vopen	1000	1200	—	24±5%	-10 to +60	∞
Output power	W	Pout	—	—	3.6	24±5%	-10 to +60	—	
C	Output current Irms	mA	Iout	4.3	5	5.5	24±1%	23±5	80
				3.8	5	6	24±5%	-10 to +60	60 to 100
	Input current Idc	A	Iin	—	0.12	0.19	24±5%	-10 to +60	60 to 100
	Oscillation frequency	kHz	FL	23	28	33	24±5%	-10 to +60	60 to 100
	Open circuit output voltage Erms	V	Vopen	1000	1200	—	24±5%	-10 to +60	∞
Output power	W	Pout	—	—	3	24±5%	-10 to +60	—	
D	Output current Irms	mA	Iout1	4.5	5	5.5	24±1%	23±5	80
			Iout2	4.5	5	5.5	24±1%	23±5	80
			Iout1	4	5	6	24±5%	-10 to +60	60 to 100
			Iout2	4	5	6	24±5%	-10 to +60	60 to 100
	Input current Idc	A	Iin	-	0.21	0.33	24±5%	-10 to +60	60 to 100
	Oscillation frequency	kHz	FL	23	28	33	24±5%	-10 to +60	60 to 100
	Open circuit output voltage Erms	V	Vopen	1000	1200	—	24±5%	-10 to +60	∞
Output power	W	Pout	—	—	3×2	24±5%	-10 to +60	—	

