

阅读申明

- 1.本站收集的数据手册和产品资料都来自互联网，版权归原作者所有。如读者和版权方有任何异议请及时告之，我们将妥善解决。
- 2.本站提供的中文数据手册是英文数据手册的中文翻译，其目的是协助用户阅读，该译文无法自动跟随原稿更新，同时也可能存在翻译上的不当。建议读者以英文原稿为参考以便获得更精准的信息。
- 3.本站提供的产品资料，来自厂商的技术支持或者使用者的心得体会等，其内容可能存在描述上的差异，建议读者做出适当判断。
- 4.如需与我们联系，请发邮件到marketing@iczoom.com，主题请标有“数据手册”字样。

Read Statement

1. The datasheets and other product information on the site are all from network reference or other public materials, and the copyright belongs to the original author and original published source. If readers and copyright owners have any objections, please contact us and we will deal with it in a timely manner.
2. The Chinese datasheets provided on the website is a Chinese translation of the English datasheets. Its purpose is for reader's learning exchange only and do not involve commercial purposes. The translation cannot be automatically updated with the original manuscript, and there may also be improper translations. Readers are advised to use the English manuscript as a reference for more accurate information.
3. All product information provided on the website refer to solutions from manufacturers' technical support or users the contents may have differences in description, and readers are advised to take the original article as the standard.
4. If you have any questions, please contact us at marketing@iczoom.com and mark the subject with "Datasheets" .

Connector type, Dimming, 7W, For 2 bulbs

TDK DC-AC Inverter

CXA-P1212-VJL

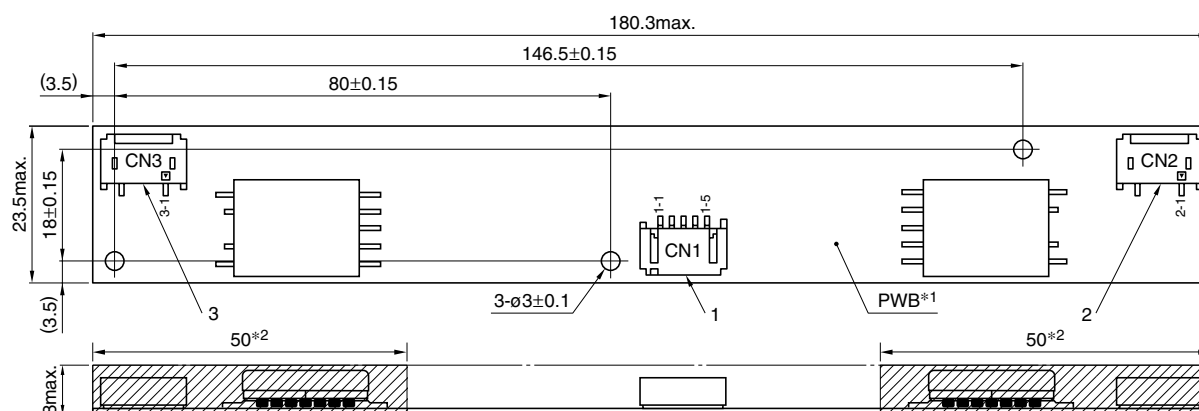
FEATURES

- The CXA-P1212-VJL is an inverter for cold cathode fluorescent lamps and features a built-in dimmer.
- Because they employ advanced output current control, fluctuations in input voltage, load, and distributed capacitance have virtually no effect on brightness.
- Output open and short circuit conditions result in no damage, heat generation, or other difficulties.
- Safe design that includes a built-in overcurrent protection element.
- Insulation is simplified due to flat backside surface of board.
- The high-voltage terminal is coated with silicone so as to reduce a possibility of an occurrence of a defect caused by dust.

TEMPERATURE AND HUMIDITY RANGES

Temperature range (°C)	Operating	0 to +70
	Storage	-30 to +85
Humidity range(%)RH	95max. [Maximum wet-bulb temperature 38°C]	

SHAPES AND DIMENSIONS



*1 Substrate (PWB: Printed wiring board): Noncombustible material UL94V-0 (FR-4 or CEM-3) t=1mm

*2 High-voltage generator (The entire surface within a range of 50mm away from the end of the base in the output)

Weight: 21g typ.

Dimensions in mm

	Connector manufacturer's company and type	Symbol
1 Input connector	Japan Solderless Terminal Co., Ltd. S5B-PH-SM3	CN1
2 Output connector	Japan Solderless Terminal Co., Ltd. SM02(8.0)B-BHS-1	CN2
3 Output connector	Japan Solderless Terminal Co., Ltd. SM02(8.0)B-BHS-1	CN3

TERMINAL NUMBERS AND FUNCTIONS

CN1

Terminal No.	Functions	Symbol
CN1-1	Input voltage Edc: 9.6 to 14.4V 12V[nom.]	V _{in}
CN1-2	0V	GND
CN1-3	Brightness dimmer voltage Edc: 0 to 3.4V (Maximum brightness on 0V)	V _{br}
CN1-4	Used in the internal circuits, do not connect.	N.C.
CN1-5	Remote voltage Edc 0V: off/5 to 7V:on	V _{rmt}

CN2

Terminal No.	Functions	Symbol
CN2-1	Output 1[High voltage] I _{rms} 2 to 6mA	V _{HIGH1}
CN2-2	—	N.C.
CN2-3	Output 1[Low voltage] (2V)	V _{LOW1}

CN3

Terminal No.	Functions	Symbol
CN3-1	Output 2[High voltage] I _{rms} 2 to 6mA	V _{HIGH2}
CN3-2	—	N.C.
CN3-3	Output 2[Low voltage] (2V)	V _{LOW2}

All specifications are subject to change without notice.

Connector type, Dimming, 7W, For 2 bulbs

TDK DC-AC Inverter

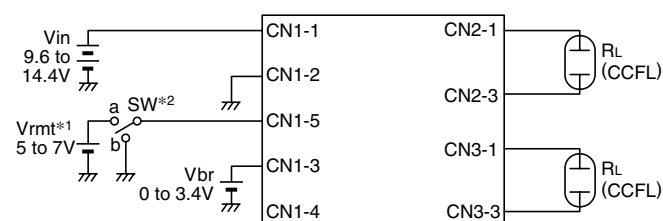
CXA-P1212-VJL

ELECTRICAL CHARACTERISTICS

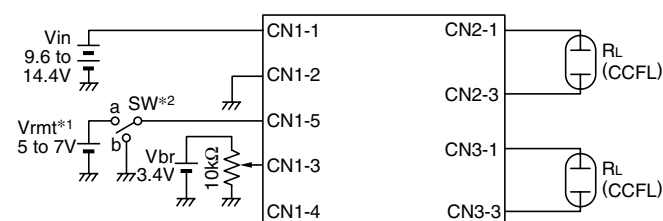
Items	Unit	Symbol	Specifications			Conditions				Brightness
			min.	typ.	max.	Vin(V)	Vbright(V)	Ta(°C)	RL(kΩ)	
Output current Irms	mA	lout1	5.3	6	6.7	12±2.4	0	0 to +70	76 to 114	Maximum
		lout2	5.3	6	6.7	12±2.4	0	0 to +70	76 to 114	Maximum
		lout1	5.5	6	6.5	12±1.2	0	0 to +70	95	Maximum
		lout2	5.5	6	6.5	12±1.2	0	0 to +70	95	Maximum
		lout1	1.7	2	2.4	12±1.2	3.4	0 to +70	250	Minimum
		lout2	1.7	2	2.4	12±1.2	3.4	0 to +70	250	Minimum
Input current Idc	A	Iin	—	0.76	1.3	12±2.4	0 to 3.4	0 to +70	76 to 114	
Oscillation frequency	kHz	FL	52	58	64	12±2.4	0	0 to +70	95	
Open circuit output voltage Erms	V	Vopen	1400	1500	2000	12±2.4	0 to 3.4	0 to +70	∞	

TYPICAL CONNECTIONS

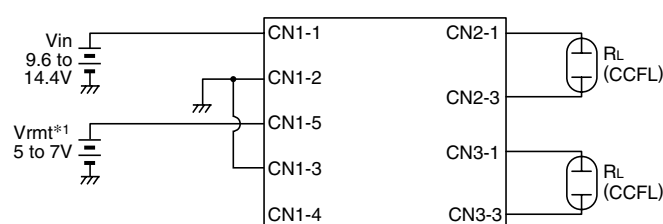
EXAMPLE OF VOLTAGE DIMMER CONTROL



EXAMPLE OF POTENTIOMETER DIMMER CONTROL



NO DIMMER CONTROL



*1 Vrm1 (remote voltage) shall be ON after Vin was ON.

*2 SW a: on, b:off

BRIGHTNESS DIMMER VOLTAGE - OUTPUT CURRENT CHARACTERISTICS

