

阅读申明

- 1.本站收集的数据手册和产品资料都来自互联网，版权归原作者所有。如读者和版权方有任何异议请及时告之，我们将妥善解决。
- 2.本站提供的中文数据手册是英文数据手册的中文翻译，其目的是协助用户阅读，该译文无法自动跟随原稿更新，同时也可能存在翻译上的不当。建议读者以英文原稿为参考以便获得更精准的信息。
- 3.本站提供的产品资料，来自厂商的技术支持或者使用者的心得体会等，其内容可能存在描述上的差异，建议读者做出适当判断。
- 4.如需与我们联系，请发邮件到marketing@iczoom.com，主题请标有“数据手册”字样。

Read Statement

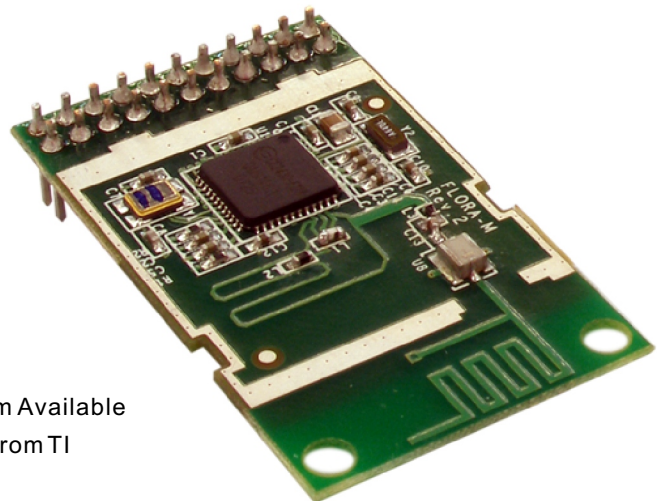
1. The datasheets and other product information on the site are all from network reference or other public materials, and the copyright belongs to the original author and original published source. If readers and copyright owners have any objections, please contact us and we will deal with it in a timely manner.
2. The Chinese datasheets provided on the website is a Chinese translation of the English datasheets. Its purpose is for reader's learning exchange only and do not involve commercial purposes. The translation cannot be automatically updated with the original manuscript, and there may also be improper translations. Readers are advised to use the English manuscript as a reference for more accurate information.
3. All product information provided on the website refer to solutions from manufacturers' technical support or users the contents may have differences in description, and readers are advised to take the original article as the standard.
4. If you have any questions, please contact us at marketing@iczoom.com and mark the subject with "Datasheets" .

Flora IEEE 802.15.4 Wireless Modules

The Flora Wireless modules feature Texas Instruments CC2430 System-on-Chip. This processor is capable of supporting both the IEEE 802.15.4 MAC and Zigbee stack from Texas Instruments. The System-on-Chip includes a fully qualified IEEE 802.15.4 radio and embedded 8051 microcontroller. The Unigen module comes in two styles; the UGWY154HP33A has a PCB trace antenna, the UGWY154HP33 has a mini-coax GSC U.FL connector for external antennas. Beyond IEEE 802.15.4 network applications, the CC2430 is an outstanding low-power Direct Sequence Spread Spectrum (DSSS) radio with proven immunity from common 2.4 GHz band interference sources. The combination of DSSS and CSMA/CA techniques are optimized for low-power applications with long sleep cycles, infrequent bursts of information and efficient binding.

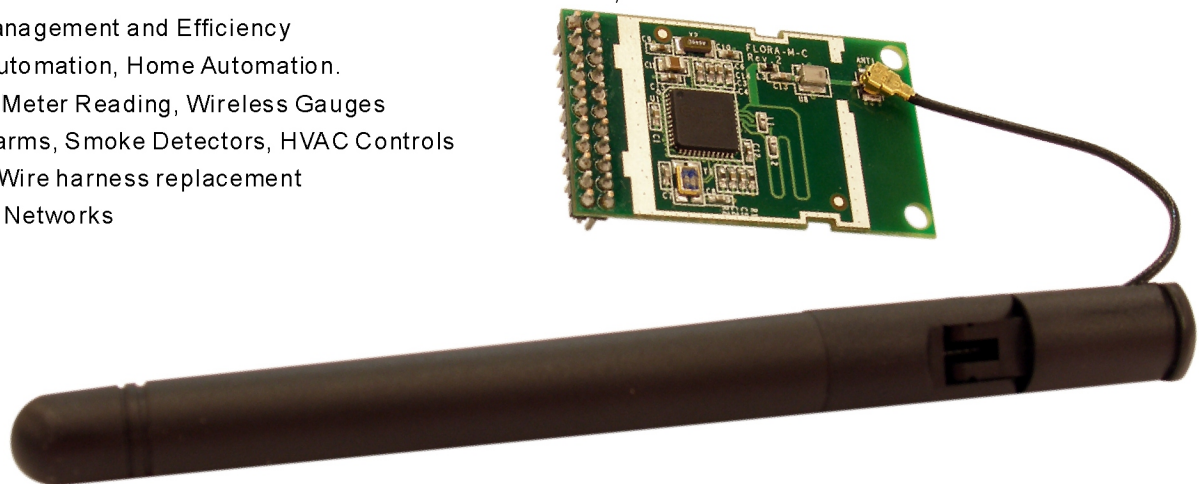
Features and Benefits

- ★ 2.4 GHz IEEE 802.15.4 compliant RF transceiver
- ★ DSSS Direct Sequence Spread Spectrum
- ★ CSMA/CA Hardware Support
- ★ Excellent Receiver sensitivity and robustness
- ★ Low Power; 500 nA Sleep mode
- ★ Low Power 27 mARx Active Mode
- ★ High Performance 8051 Core
- ★ 128 kB onboard Flash 8kB RAM
- ★ AES 128 Encryption
- ★ 19 Digital I/O pins
- ★ Small Size 24 x 39 x 3 mm
- ★ High quality Local Oscillator for optimal radio sensitivity
- ★ Adaptor Board for TI SmartRF04EB Development System Available
- ★ Zigbee Stack and IEEE MAC software readily available from TI



Applications

- ★ Zigbee Mesh Networks; Coordinators, Routers and End points
- ★ Interoperability with Zigbee Compliant Devices
- ★ IEEE 802.15.4 Point-to-Point and Point-to-Multi-Point networks, FFD & RFD
- ★ Energy Management and Efficiency
- ★ Building Automation, Home Automation.
- ★ Automatic Meter Reading, Wireless Gauges
- ★ Burglar Alarms, Smoke Detectors, HVAC Controls
- ★ Robotics, Wire harness replacement
- ★ 6LoWPAN Networks



Parameter	Module Spec
Antenna Flora-M	PCB Trace
Antenna Flora-M-C	GSC U.FL
Crystal Drift	±20 ppm/°C
Crystal Frequency	38 MHz ±20 ppm
GPIO Pins (including SPI)	19
Header Orientation	Mirrored (down)
Header Pins	2 x 11
Header Type	2 mm pitch through hole
Interface	SPI
Lead Free	RoHS 6
Mating Connector	Digi-Key A36220-ND
Moisture Sensitivity Level	MSL 2
MTBF	50,000 Hrs
Order Code TI Adaptor	UGWTI154ADAPTER
Order Code with PCB Antenna	UGWY154HP33A
Order Code with U.FL Antenna	UGWY154HP33
Size height with header	9 mm
Size height without header	3 mm
Size PCB	24 x 39 mm
Supply Voltage	2.0 to 3.6 VDC

Parameter	Chip Spec
Data Rate MAX	250 kBPS
Line Power MCU Active	10 mA
Line Power Rx Max	27 mA
Line Power Sleep	500 nA
Line Power Tx Max	25 mA
Number of Channels	16
Range LOS	50 meter
RF Frequency Band	2400 to 2483 Mhz
RF Power MAX	0 dBm
RF Sensitivity	-92 dBm
Temp Range	-40 to + 85 °C

UNIGEN

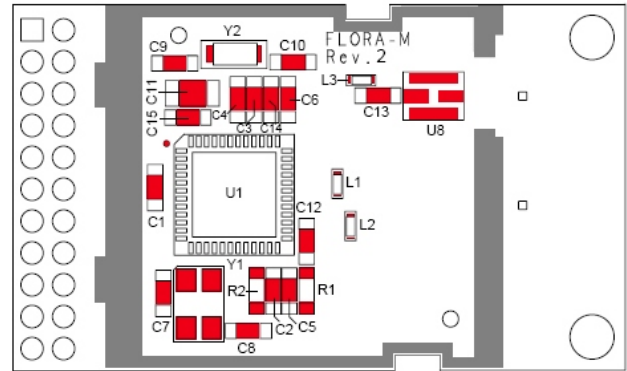
45388 Warm Springs Blvd. Fremont, CA 94539-6102 U.S.A.

Tel: 1-510-668-2088

Fax: 1-510-661-2777

Email: sales@unigen.com

www.unigen.com



TOP VIEW

PIN SIGNAL	PIN SIGNAL
1 VDD	2 P2_2
3 P2_1	4 P2_0
5 P1_7/MISO	6 P1_6/MOSI
7 P1_5/SCLK	8 P1_4/CS*
9 P1_3	10 P1_2
11 P1_1	12 P1_0
13 RESET*	14 P0_0
15 P0_1	16 P0_2
17 P0_3	18 P0_4
19 P0_5	20 P0_6
21 GND	22 P0_7

NOTE:

