

阅读申明

- 1.本站收集的数据手册和产品资料都来自互联网，版权归原作者所有。如读者和版权方有任何异议请及时告之，我们将妥善解决。
- 2.本站提供的中文数据手册是英文数据手册的中文翻译，其目的是协助用户阅读，该译文无法自动跟随原稿更新，同时也可能存在翻译上的不当。建议读者以英文原稿为参考以便获得更精准的信息。
- 3.本站提供的产品资料，来自厂商的技术支持或者使用者的心得体会等，其内容可能存在描述上的差异，建议读者做出适当判断。
- 4.如需与我们联系，请发邮件到marketing@iczoom.com，主题请标有“数据手册”字样。

Read Statement

1. The datasheets and other product information on the site are all from network reference or other public materials, and the copyright belongs to the original author and original published source. If readers and copyright owners have any objections, please contact us and we will deal with it in a timely manner.
2. The Chinese datasheets provided on the website is a Chinese translation of the English datasheets. Its purpose is for reader's learning exchange only and do not involve commercial purposes. The translation cannot be automatically updated with the original manuscript, and there may also be improper translations. Readers are advised to use the English manuscript as a reference for more accurate information.
3. All product information provided on the website refer to solutions from manufacturers' technical support or users the contents may have differences in description, and readers are advised to take the original article as the standard.
4. If you have any questions, please contact us at marketing@iczoom.com and mark the subject with "Datasheets" .



Bluetooth® Module – LM-071 Class 2 BC04

Features

- The module is a Max 4dBm (Class2) module.
- Bluetooth standard v2.0 + EDR specification
- Low current consumption :
Hold, Sniff, Park, Deep Sleep Mode
- 3.0V to 3.6V operation
- Support for up to 7 ACL links and 3 SCO links (HCI mode firmware)
- Interface: USB, UART & PCM (for VOICE CODEC)
- SPP firmware available by default. Also offered HID firmware
- Support for 802.11 Co -Existence
- RoHS compliant
- External Antenna
- Small outline. 25 x 14.5 x 2.2 mm



Applications

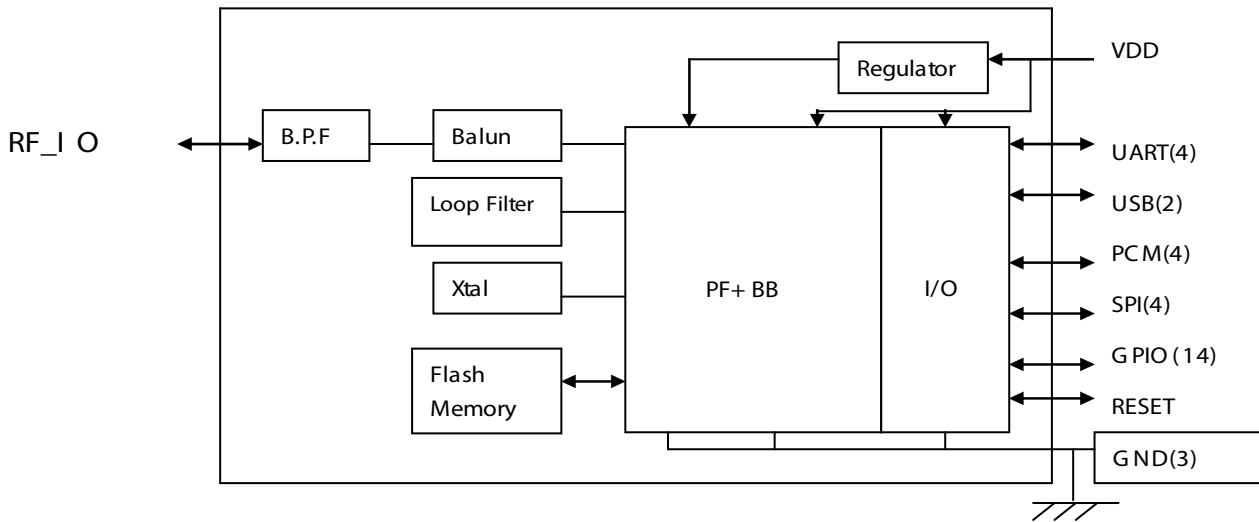
- Serial Communications
- Cordless handset
- Digital camera & printer
- Embedded Devices
- Access Points
- GPS, POS, Barcode Reader
- Domestic and industrial applications

General Electrical Specification

Parameter	Description	Min.	Typ.	Max.	Units
Operating Voltage (VDD)	-	3.00	3.30	3.60	V
RF Output Power	Measured in 50 ohm	-6	0	4	dBm
RX Sensitivity	-	-	-83	-80	dBm
Input Low Voltage	RESET,UART,GPIO,PCM	-0.30	-	0.80	V
Input High Voltage	RESET,UART,GPIO ,PCM	0.70VDD	-	VDD+ 0.30	V
Output Low Voltage	UART,GPIO ,PCM	-	-	0.40	V
Output High Voltage	UART,GPIO ,PCM	VDD -0.40	-	-	V
Average Current Consumption	Deep sleep	-	40	-	uA
Average Current Consumption	ACL 40ms sniff	-	2.4	-	mA
Average Current Consumption	SCO connection HV1	-	39	-	mA
Peak Current	Tx burst + 4dBm	-	-	58	mA



Block Diagram



LM-071 Pin Functions

PIN	NAME	TYPE	FUNCTION
1	PIO(8)	Bi-directional	Programmable Input /Output line
2	PIO(9)	Bi-directional	Programmable Input /Output line
3	PIO(10)	Bi-directional	Programmable Input /Output line
4	AIO(0)	Bi-directional	Programmable Input /Output Line , 32KHz sleep clock input
5	AIO(1)	Bi-directional	Programmable Input /Output Line , 32KHz sleep clock input
6	RESET	CMOS input	Reset if high. Input debounced so must be high for >5ms to cause a reset
7	SPI_MISO	CMOS Output	Serial Peripheral Interface Data Output
8	SPI_CSB	CMOS Input	Chip Select For Synchronous Serial Interface active low
9	SPI_CLK	CMOS Input	Serial Peripheral Interface Clock
10	SPI_MOSI	CMOS Input	Serial Peripheral Interface Data Input
11	UART_CTS	CMOS Input	UART Clear To Send (Active Low)
12	UART_TX	CMOS Output	UART Data Output
13	UART_RTS	CMOS Output	UART Request To Send (Active Low)
14	UART_RX	CMOS Input	UART Data Input
15	PIO(11)	Bi-directional	Programmable Input/Output line
16	3V3	Power	3.3V Power Supply Input
17	GND	GND	Ground
18	PCM_OUT	CMOS Output	Synchronous Data Output
19	PCM_SYNC	Bi-directional	Synchronous Data Sync
20	PCM_IN	CMOS Input	Synchronous Data Input
21	PCM_CLK	Bi-directional	Synchronous Data Clock
22	USB_DP	Bi-directional	USB Data Plus
23	USB_DN	Bi-directional	USB Data Minus
24	PIO(7)	Bi-directional	Programmable Input /Output line
25	PIO(6)	Bi-directional	Programmable Input /Output line , CLK_REQ , WLAN_Active /Ch_Data input
26	PIO(5)	Bi-directional	Programmable Input /Output line , USB_DETACH, BT_Active output
27	PIO(4)	Bi-directional	Programmable Input / Output Line , USB_ON, BT_Priority /Ch_Clk Output
28	PIO(3)	Bi-directional	Programmable Input/Output Line , USB_WAKE_UP, CLK_REQ_IN



29	PIO(2)	Bi-directional	Programmable Input / Output Line , USB_PULL_UP, CLK_REQ_OUT
30	PIO(1)	Bi-directional	Programmable Input/Output Line , TX Enable
31	PIO(0)	Bi-directional	Programmable Input / Output Line , RX Enable
32	GND	GND	Ground
33	RF_IO	Analogue	50 ohm Antenna connection
34	GND	GND	Ground

LM-071 Pin out Information

PIN DETAILS VIEWED FROM TOP SIDE

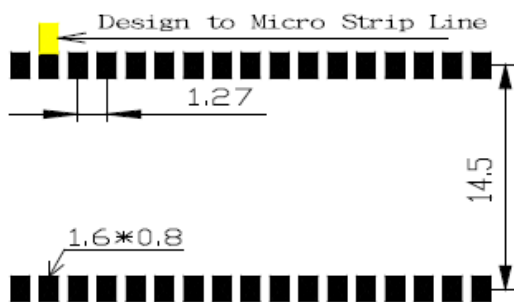
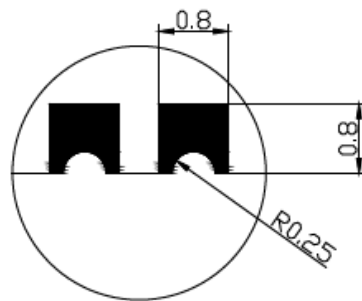
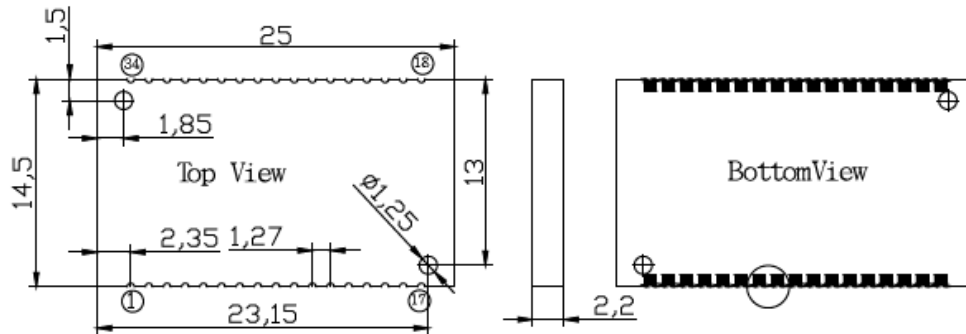
1	34
PIO (8)	GND
PIO (9)	RF_IO
PIO (10)	GND
AIO (0)	PIO (0)
AIO (1)	PIO (1)
RESET	PIO (2)
SPI_MISO	PIO (3)
SPI_CSB	PIO (4)
SPI_CLK	PIO (5)
SPI_MOSI	PIO (6)
UART_CTS	PIO (7)
UART_TX	USB_DN
UART_RTS	USB_DP
UART_RX	PCM_CLK
PIO (11)	PCM_IN
3V3	PCM_SYNC
GND	PCM_OUT
17	18

MODULE PAD AND SOLDER MASK DETAILS

SOLDER MASK WINDOW 1.0mm MAX
 SOLDER PAD 0.8mm



MECHANICAL DETAILS VIEWED FROM TOP/BOTTOM SIDE





LM071 Antenna Circuit Values

C1	NC/0603	0.1UF,16V,+80-20%,Y5V,0603	CHIP/C
C2	NC/0603	0.1UF,16V,+80-20%,Y5V,0603	CHIP/C
L4	OR/0603	0R,1/10W,+/-5%,0603	CHIP/R

Application Schematic

