

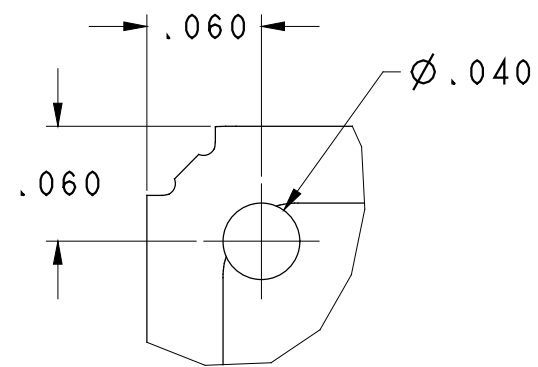
阅读申明

- 1.本站收集的数据手册和产品资料都来自互联网，版权归原作者所有。如读者和版权方有任何异议请及时告之，我们将妥善解决。
- 2.本站提供的中文数据手册是英文数据手册的中文翻译，其目的是协助用户阅读，该译文无法自动跟随原稿更新，同时也可能存在翻译上的不当。建议读者以英文原稿为参考以便获得更精准的信息。
- 3.本站提供的产品资料，来自厂商的技术支持或者使用者的心得体会等，其内容可能存在描述上的差异，建议读者做出适当判断。
- 4.如需与我们联系，请发邮件到marketing@iczoom.com，主题请标有“数据手册”字样。

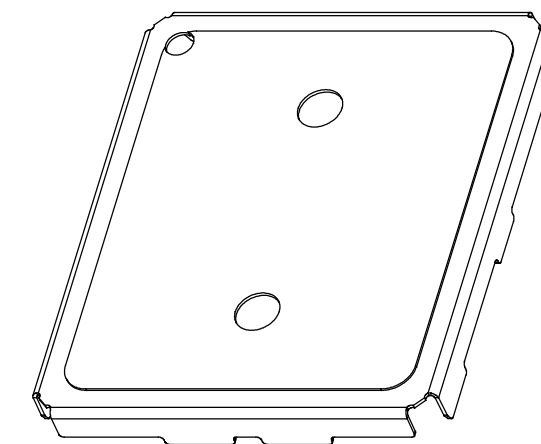
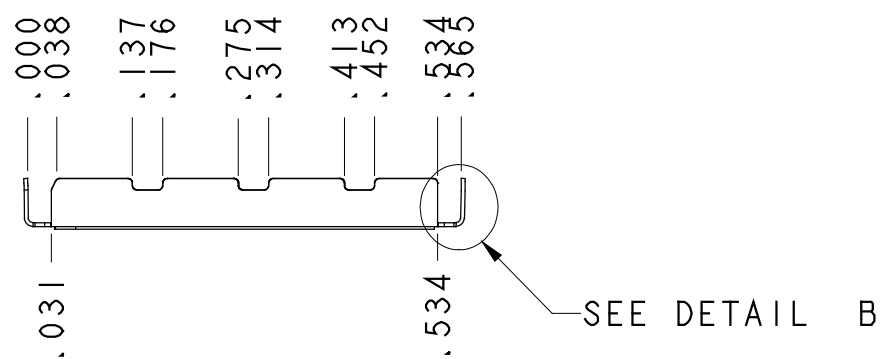
Read Statement

1. The datasheets and other product information on the site are all from network reference or other public materials, and the copyright belongs to the original author and original published source. If readers and copyright owners have any objections, please contact us and we will deal with it in a timely manner.
2. The Chinese datasheets provided on the website is a Chinese translation of the English datasheets. Its purpose is for reader's learning exchange only and do not involve commercial purposes. The translation cannot be automatically updated with the original manuscript, and there may also be improper translations. Readers are advised to use the English manuscript as a reference for more accurate information.
3. All product information provided on the website refer to solutions from manufacturers' technical support or users the contents may have differences in description, and readers are advised to take the original article as the standard.
4. If you have any questions, please contact us at marketing@iczoom.com and mark the subject with "Datasheets" .

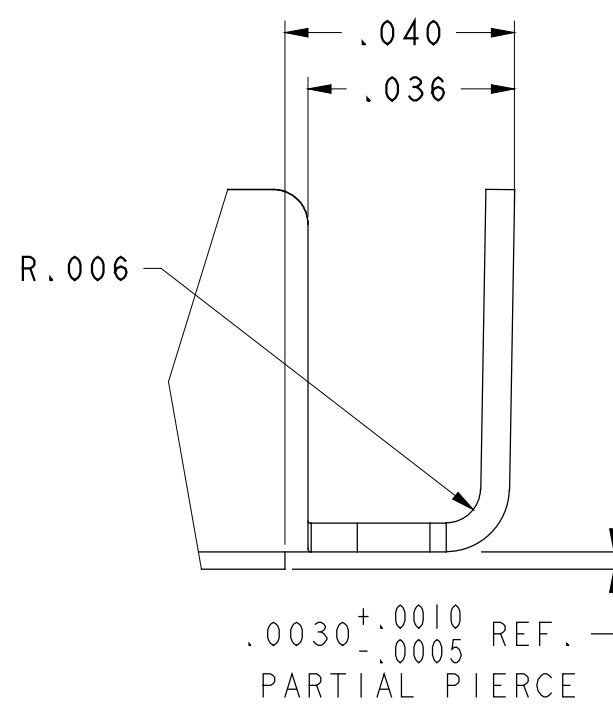
DWG NO:	0097-2004
REVISIONS	
ECO-E1871 ADDED REF. DIM. TO PARTIAL PIERCE DPG 9/20/00	02
ECO-E2313 MODIFIED DWG FOR MODULAR TOOLING DPG 6/18/01	03
ECO-E2441 CHANGED DIST. TO LANCE .028 TO .040 WHS 7/24/01	04
ECO-E2803 ADDED PACKING TAPE ILLUSTRATION. FAK 04/02/02 EWS 04/05/02	05
ECO-E3157 UPDATED FOR CLARITY, DELETED SECT A-A AND SHEET 2 SDH 08/08/02 DPG 08/08/02	06



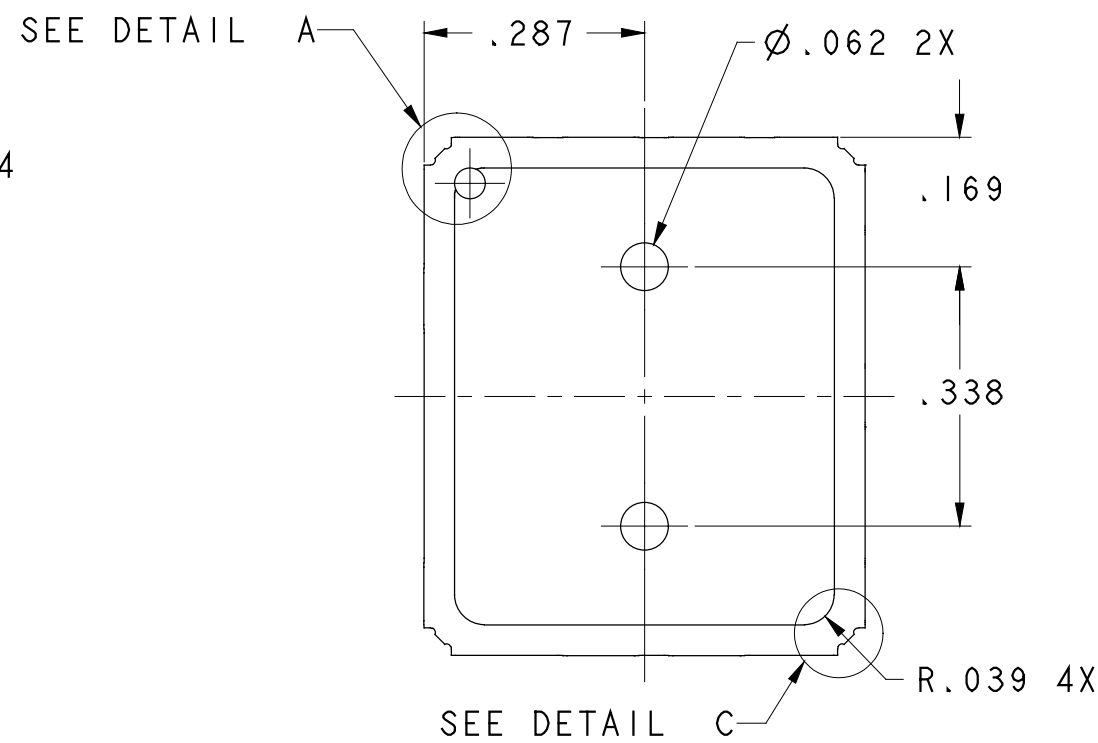
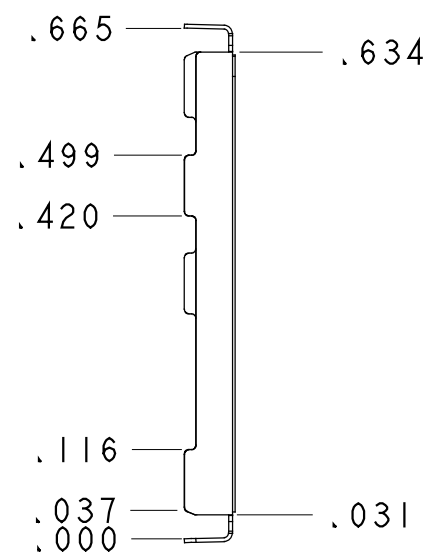
DETAIL A
SCALE 10:1



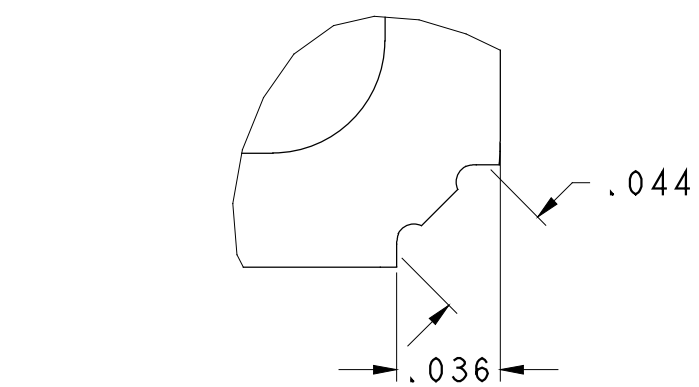
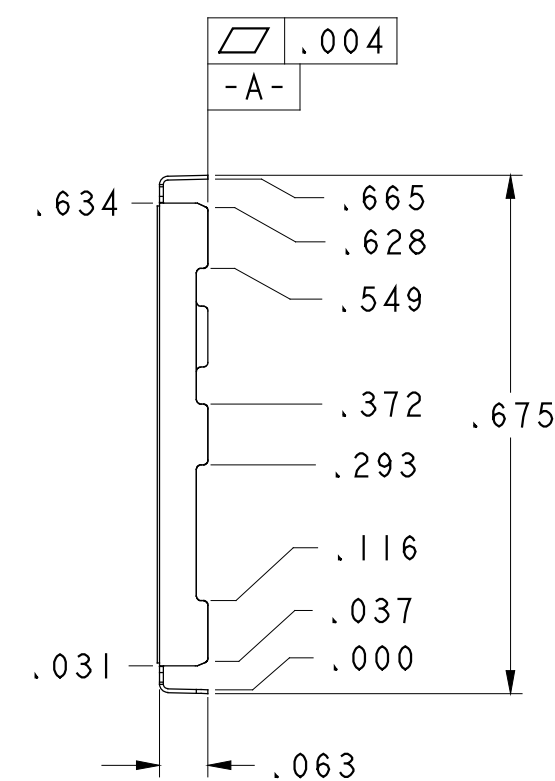
SCALE 4:1



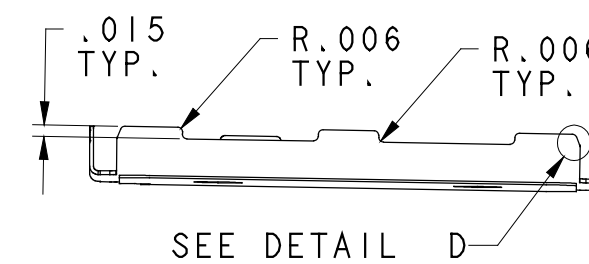
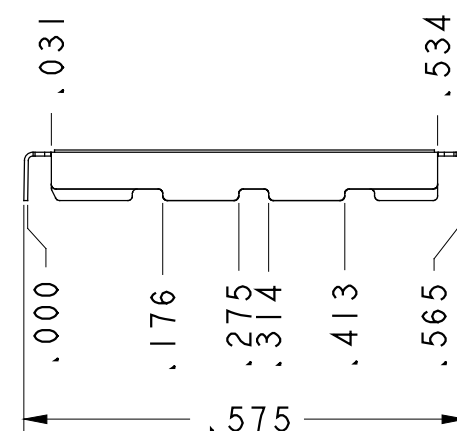
DETAIL B
SCALE 30:1



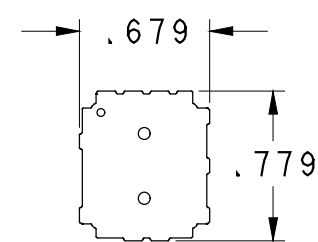
TAPE FEED DIRECTION →



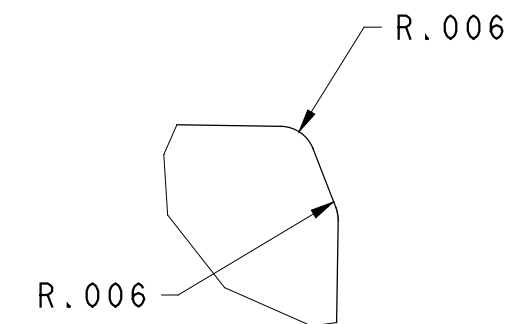
DETAIL C
SCALE 15:1



SEE DETAIL D



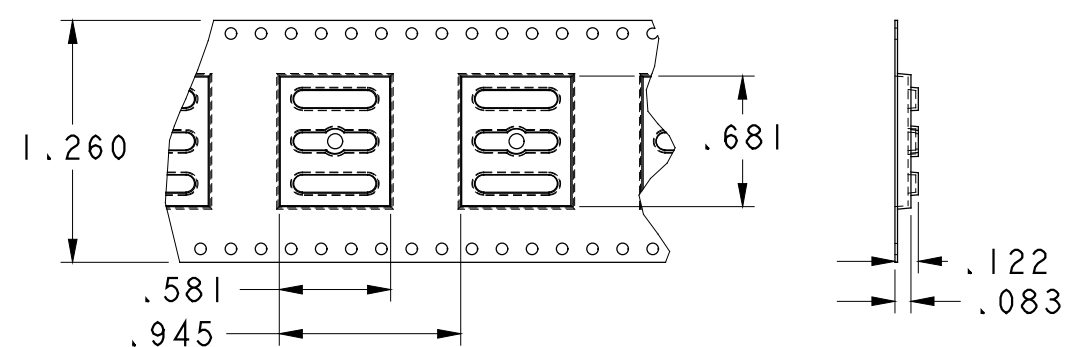
FLAT PATTERN
SCALE 1:1



DETAIL D
SCALE 30:1

- NOTES:
1. THE PARTIAL PIERCE SHOULD APPEAR CONSISTENT IN DEPTH UNDER NORMAL LIGHTING. THE TOP SHOULD NOT BREAK AWAY WITHOUT FORCE APPLIED DIRECTLY TO IT. WHEN RESTRAINED ON THE SIDES ADJACENT TO THE STARTING CORNER, THE TOP SHOULD PEEL BACK WITHOUT EFFECTIVELY DISTORTING THE FORM, FIT, AND FUNCTION OF THE SIDES.
 2. TO ORDER PARTS SUPPLIED WITH TAPE AND REEL, PLEASE SPECIFY PART NUMBER 0T97-2004. (PSA COVER TAPE)

PACKING TAPE ILLUSTRATION



THIS INFORMATION IS CONFIDENTIAL AND PROPRIETARY TO LAIRD TECHNOLOGIES. IT MAY NOT BE DISCLOSED TO ANYONE, OTHER THAN LAIRD TECHNOLOGIES PERSONNEL, WITHOUT WRITTEN AUTHORIZATION FROM LAIRD TECHNOLOGIES.

DWG NO: 0097-2004

MATERIAL: .006 ± .0006 THICK C1010 CRS PREPLATED TIN PLATE	TOLERANCES NOT SHOWN DECIMAL 2 PL'S ± .010 DECIMAL 3 PL'S ± .005 ANGULAR ± 3°	DRAWN BY: WHS DATE: 5/3/01
HEAT TREAT: NONE	THIRD ANGLE PROJECTION	CHECKED: JEK DATE: 5/4/01
THICKNESS AFTER: N/A	UNITS: INCH SCALE: 4:1	APPROVED: DPG DATE: 6/18/01
FINISH: BRIGHT TIN PLATE .0001" - .0003"	CAD MAINTAINED DRAWING. MANUAL CHANGES UNAUTHORIZED.	REF. DWG. NO. 0097-2004 SHEET 1 OF 1
		REV 06

