

阅读申明

- 1.本站收集的数据手册和产品资料都来自互联网，版权归原作者所有。如读者和版权方有任何异议请及时告之，我们将妥善解决。
- 2.本站提供的中文数据手册是英文数据手册的中文翻译，其目的是协助用户阅读，该译文无法自动跟随原稿更新，同时也可能存在翻译上的不当。建议读者以英文原稿为参考以便获得更精准的信息。
- 3.本站提供的产品资料，来自厂商的技术支持或者使用者的心得体会等，其内容可能存在描述上的差异，建议读者做出适当判断。
- 4.如需与我们联系，请发邮件到marketing@iczoom.com，主题请标有“数据手册”字样。

Read Statement

1. The datasheets and other product information on the site are all from network reference or other public materials, and the copyright belongs to the original author and original published source. If readers and copyright owners have any objections, please contact us and we will deal with it in a timely manner.
2. The Chinese datasheets provided on the website is a Chinese translation of the English datasheets. Its purpose is for reader's learning exchange only and do not involve commercial purposes. The translation cannot be automatically updated with the original manuscript, and there may also be improper translations. Readers are advised to use the English manuscript as a reference for more accurate information.
3. All product information provided on the website refer to solutions from manufacturers' technical support or users the contents may have differences in description, and readers are advised to take the original article as the standard.
4. If you have any questions, please contact us at marketing@iczoom.com and mark the subject with "Datasheets" .

CLOGGED DETECTOR

D6A-N

The Clogged Conditions of Air Filters for detection Server Computers, including Workstation Servers.

- Detects the clogged conditions of air filters more efficiently than
 - a conventional time totaling meter.
 - Adopts a velocity of the wind monitor employing an NTC thermistor to output 0 to 5V analog voltage signals.



Ordering

Model
D6A-N

Specifications and Rating

Mounting method	Front fixation secured with nylon rivets (see External Dimensions for the fixation dimensions of the Sensor)
Temperature device	NTC thermistor (epoxy resin coat)
Detection method	Velocity of the wind monitor method (80 °C own heating type)
Connector	Japan Aviation Electronics Industry's IL-Z Series
Operating temperature	0 °C to 45 °C (with no icing)
Storage temperature	-25 °C to + 65 °C
Operating humidity	25 to 85%RH
Storage humidity	25 to 85%RH
Applicable gas	Air
Range of velocity of the wind detection	0.5 to 1.5m/sec.
Mounting direction	Mount the Sensor so that the ventilation opening will be located vertical to the wind direction.
Drive power supply	12V DC asd ± 10%
Operating environmental conditions	The Sensor must be free of oil, moisture, and/or dust. Otherwise, the thermal diffusion characteristics of the Sensor will change.

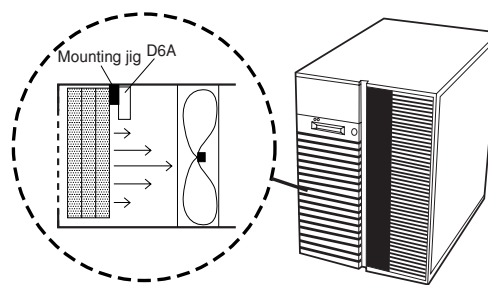
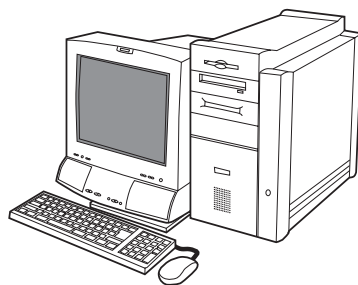
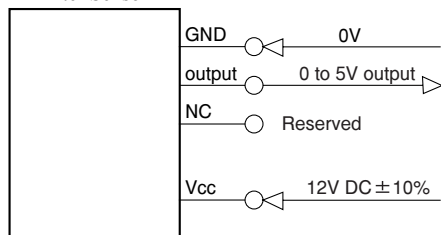
Corrections : Judge the degree of clogging condition from a voltage differential based on the initial voltage obtained when the filter is clean.
One minute will be required for the stabilization of the Sensor after the Sensor is turned on.

Performance

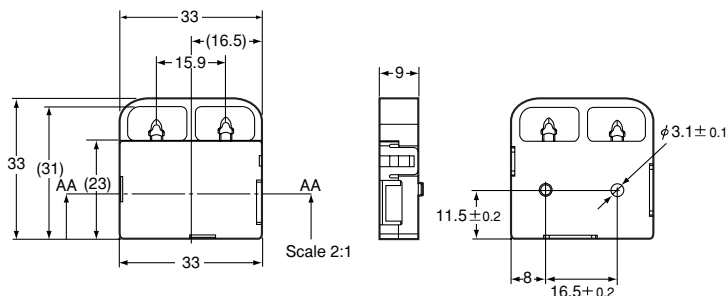
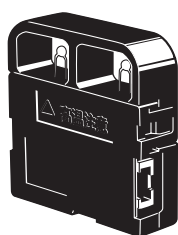
Head	Test method	Criteria
(1) Output voltage characteristics	<ul style="list-style-type: none"> • Power supply voltage: 12.0V DC • Load resistance: 1M • Ambient temperature: 25 ± 5 degrees, Relative humidity: 25% to 85% RH 	Output range: 0.2 to 5.0V (0 to 1.5m/sec.) [Relative value] Based on output at a velocity of the wind of 1.5m/sec. Output at velocity of the wind of 1.0m/sec.: -1.80V ± 0.45V Output at velocity of the wind of 0.5m/sec.: -4.25V ± 0.75V [Absolute value] (Reference value) <ul style="list-style-type: none"> • EVelocity of the wind of 0.5m/sec.: Output of 0.25V ± 1.2V • EVelocity of the wind of 1.0m/sec.: Output of 2.70V ± 1.35V • EVelocity of the wind of 1.5m/sec.: Output of 4.50V ± 1.35V
(2) Temperature characteristics	<ul style="list-style-type: none"> • Power supply voltage: 12.0V DC • Ambient temperature: 0 °C to 45 °C Relative humidity : 25% to 85% RH 	[Relative value] Based on output (at 25 °C) at a velocity of the wind of 1.5m/sec. Output at velocity of the wind of 1.0m/sec. : -1.80V ± 0.55V Output at velocity of the wind of 0.5m/sec. : -4.25V ± 0.90V
(3) Max. output voltage	<ul style="list-style-type: none"> • Power supply voltage: 13.2V DC • Velocity of the wind: 1.5m/sec. • Ambient temperature: 25 ± 5 °C • Load resistance: 1M 	5.2V max.
(4) Current consumption	<ul style="list-style-type: none"> • Power supply voltage: 13.2V DC • Measured velocity of the wind: 1.5m/sec. • Ambient temperature: 25 ± 5 °C • Load resistance: 1M 	60mA max.
(5) Insulation resistance	Measure the insulation resistance between the whole terminals and the sensor frame with a 100V DC insulation resistance tester.	20M min.
(6) Dielectric strength	Apply 500V AC for one minute between the whole terminals and the sensor frame.	Max. leak current of 1mA

Electrical Connections — Application Example

Air Filter Sensor



External Dimensions



Cautions

■ Handling Precautions

Storage

Pay the utmost attention as follows when storing the Sensor for long periods of time.

- (1) Select a storage venue in consideration of protecting the Sensor from dust and humidity.
- (2) Store the Sensor in the original packing materials.

Mounting to Store computer

- (1) Perform a safety check if the Sensor is dropped.
- (2) Connect the Sensor to the connector securely.
- (3) Use Kitagawa Industries' NRP-345 nylon rivets to secure the Sensor.

Precautions for Operation

- (1) Do not apply a voltage of 13.2V DC or higher to the Sensor.
- (2) Keep clean the thermistor during maintenance. The output voltage of the thermistor will drop if there is any oil, moisture, and/or dust on the surface of the thermistor.
- (3) Do not bend the terminals of the thermistor while cleaning, else the output voltage of the thermistor will drop.
- (4) Check that the PCB is free of water or moistened dust, else the internal circuit will short-circuit.
- (5) A maximum of 12V DC is applied to the terminals of the thermistor.
Do not touch them, else an electric shock may be received.
When incorporating the Sensor into your product, describe this precaution in the maintenance manual of the product.
- (6) When the Sensor is turned on, the thermistor will heat to approximately 80 °C. Touching the thermistor may result in burns.
When incorporating the Sensor into your product, describe this precaution in the maintenance manual of the product.
- (7) When disposing of the Sensor, be mindful of necessary risk prevention and environmental maintenance.

ALL DIMENSIONS SHOWN ARE IN MILLIMETERS.

To convert millimeters into inches, multiply by 0.03937. To convert grams into ounces, multiply by 0.03527.

Cat. No.A000-E1-1

In the interest of product improvement, specifications are subject to change without notice.

OMRON Corporation

Electronics Components Company

Electronic & Mechanical Components Division H.Q.

C&C Sensor Department

Shiokoji Horikawa, Shimogyo-ku,

Kyoto, 600-8530 Japan

Phone:(81)75-344-7096 Fax: (81) 75-344-7049

Printed in Japan

1002-1M (1002) (W)