


## 阅读申明

- 1.本站收集的数据手册和产品资料都来自互联网，版权归原作者所有。如读者和版权方有任何异议请及时告之，我们将妥善解决。
- 2.本站提供的中文数据手册是英文数据手册的中文翻译，其目的是协助用户阅读，该译文无法自动跟随原稿更新，同时也可能存在翻译上的不当。建议读者以英文原稿为参考以便获得更精准的信息。
- 3.本站提供的产品资料，来自厂商的技术支持或者使用者的心得体会等，其内容可能存在描述上的差异，建议读者做出适当判断。
- 4.如需与我们联系，请发邮件到marketing@iczoom.com，主题请标有“数据手册”字样。

## Read Statement

1. The datasheets and other product information on the site are all from network reference or other public materials, and the copyright belongs to the original author and original published source. If readers and copyright owners have any objections, please contact us and we will deal with it in a timely manner.
2. The Chinese datasheets provided on the website is a Chinese translation of the English datasheets. Its purpose is for reader's learning exchange only and do not involve commercial purposes. The translation cannot be automatically updated with the original manuscript, and there may also be improper translations. Readers are advised to use the English manuscript as a reference for more accurate information.
3. All product information provided on the website refer to solutions from manufacturers' technical support or users the contents may have differences in description, and readers are advised to take the original article as the standard.
4. If you have any questions, please contact us at marketing@iczoom.com and mark the subject with "Datasheets" .

NOTICE:	THIS IS A RoHS COMPLIANT COMPONENT/PRODUCT. ALL ENGINEERING CHANGES MUST HAVE PRIOR APPROVAL BY THE DESIGN CENTER.
RoHS 	

TEST NOTES:

UNLESS OTHERWISE SPECIFIED, TESTING IS PERFORMED AT 25°C ±5°C.

1. TURNS RATIO AND POLARITY: 100 KHz, 0.02 VRMS (100%)

$$\frac{(6-8)}{(11-9)} = 1.0 \pm 2\%$$

$$\frac{(16-14)}{(1-3)} = 2.4 \pm 2\%$$

\* SET PTT PARAMETER AS SPTRP: PRI LEVEL 20 mV, SEC LEVEL 70 mV.

2. 2.1 INDUCTANCE (OCL): 100 KHz, 0.100 VRMS (100%)  
(1-3) = (11-9) = 1.0 mH MINIMUM

- 2.2 INDUCTANCE (OCL): 100 KHz, 0.100 VRMS AT -40 CENTIGRADE DEGREES (SAMPLE)  
(1-3) = (11-9) = 600 uH MINIMUM

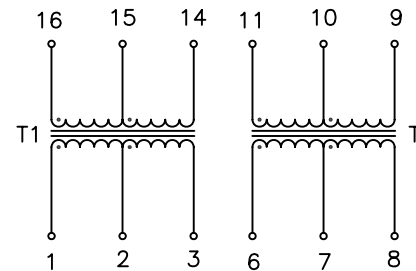
3. LEAKAGE INDUCTANCE (LL): 100 KHz, 0.2 VRMS (100%)  
(1-3) WITH (16-14) SHORT = 0.8 uH MAXIMUM  
(11-9) WITH (6-8) SHORT = 0.8 uH MAXIMUM

4. INTERWINDING CAPACITANCE (CCW): 100 KHz, 1 VRMS (100%)  
(16-14) TO (1-3) = 30 pF MAXIMUM  
(6-8) TO (11-9) = 30 pF MAXIMUM

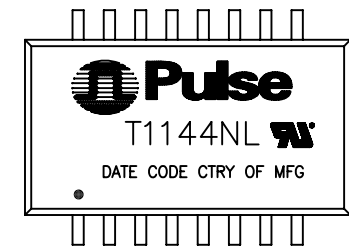
5. DC RESISTANCE (DCR): (100%)  
(1-3) = 0.85 OHM MAXIMUM  
(16-14) = 2.0 OHM MAXIMUM  
(6-8) = 0.85 OHM MAXIMUM  
(11-9) = 0.85 OHM MAXIMUM

6. HIPOT: (100%)  
(1-3) TO (16-14) } = 1500 VRMS FOR 1 MINUTE OR  
(6-8) TO (11-9) } 1650 VRMS FOR 6 SECONDS  
(3-14) TO (6-11) = 500 VRMS FOR 6 SECONDS

OTHERS:  
CHECK MECHANICAL DIMENSIONS PER PS-0010.001



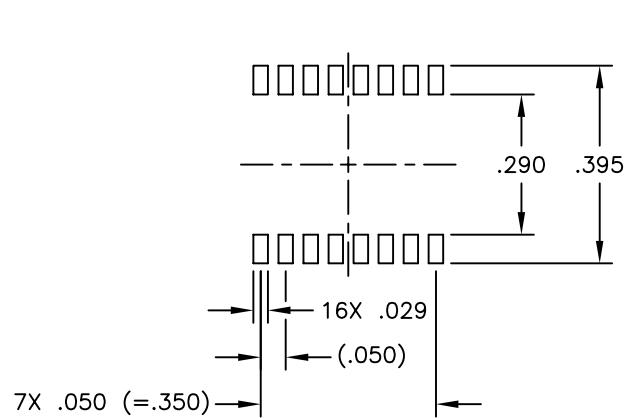
SCHEMATIC



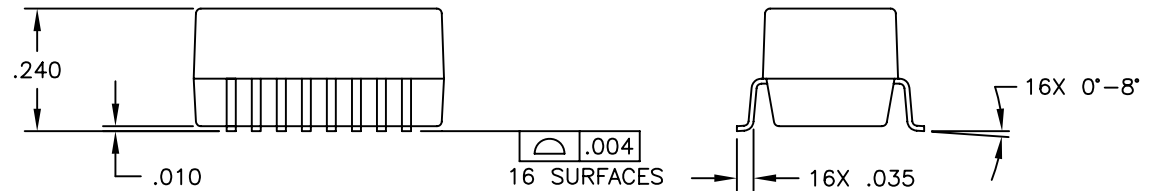
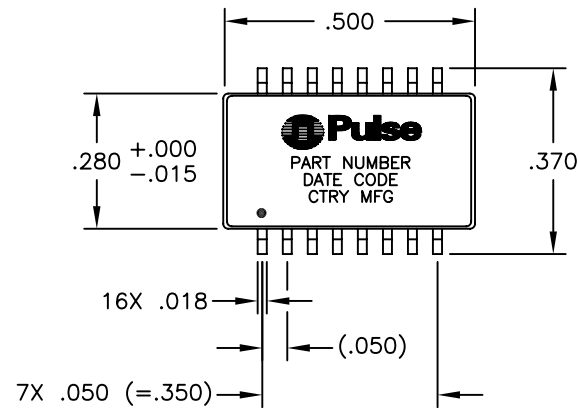
NOTE: TO ORDER TAPE & REEL PACKAGING ADD A "T" SUFFIX TO THE PART NUMBER(i.e T1144NL BECOMES T1144NLT).

© Copyright, 2010. Pulse Engineering, Inc. All rights reserved. Drawing specifications subject to change without notice. (01/21/11)

PULSE CONFIDENTIAL & PROPRIETARY	PRODUCT DESCRIPTION	PS DRAWING	SHEET:	DWG. NO./ PART NO.	REV.
	XFMR,DUAL,T1,BH,ET,1:2.4,1:1	PS-0010.001-D	1	T1144NL	M17



SUGGESTED LAND PATTERN



UNLESS OTHERWISE SPECIFIED, ALL  
DIMENSIONS ARE IN INCHES  
TOLERANCES ARE:

DECIMALS	ANGLES
.XX ±.01	± 1°
.XXX ±.005	

© Copyright, 2010. Pulse Engineering, Inc. All rights reserved. Drawing specifications subject to change without notice. (01/21/11)

PULSE CONFIDENTIAL & PROPRIETARY	PRODUCT DESCRIPTION	PS DRAWING	SHEET:	DWG. NO./ PART NO.	REV.
	XFMR,DUAL,T1,BH,ET,1:2.4,1:1	PS-0010.001-D	2	T1144NL	M17