

阅读申明

- 1.本站收集的数据手册和产品资料都来自互联网，版权归原作者所有。如读者和版权方有任何异议请及时告之，我们将妥善解决。
- 2.本站提供的中文数据手册是英文数据手册的中文翻译，其目的是协助用户阅读，该译文无法自动跟随原稿更新，同时也可能存在翻译上的不当。建议读者以英文原稿为参考以便获得更精准的信息。
- 3.本站提供的产品资料，来自厂商的技术支持或者使用者的心得体会等，其内容可能存在描述上的差异，建议读者做出适当判断。
- 4.如需与我们联系，请发邮件到marketing@iczoom.com，主题请标有“数据手册”字样。

Read Statement

1. The datasheets and other product information on the site are all from network reference or other public materials, and the copyright belongs to the original author and original published source. If readers and copyright owners have any objections, please contact us and we will deal with it in a timely manner.
2. The Chinese datasheets provided on the website is a Chinese translation of the English datasheets. Its purpose is for reader's learning exchange only and do not involve commercial purposes. The translation cannot be automatically updated with the original manuscript, and there may also be improper translations. Readers are advised to use the English manuscript as a reference for more accurate information.
3. All product information provided on the website refer to solutions from manufacturers' technical support or users the contents may have differences in description, and readers are advised to take the original article as the standard.
4. If you have any questions, please contact us at marketing@iczoom.com and mark the subject with "Datasheets" .



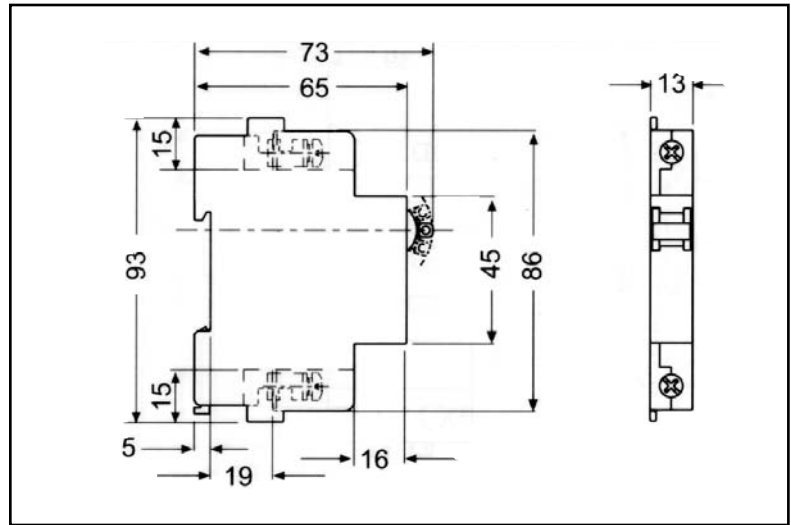
AMERICAN ELECTRICAL, INC.

INDUSTRIAL ELECTRICAL ACCESSORIES

425 SOUTHLAKE BLVD. • SUITE 9-B • RICHMOND, VA 23236 • (804) 379-2899 • FAX: (804) 379-8935

DIN RAIL MOUNTED CIRCUIT BREAKERS

UL 1077 RATED



FEATURES:

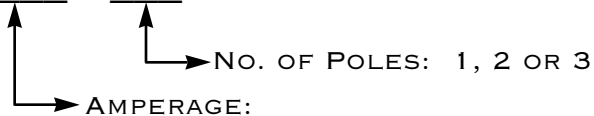
- UL 1077 APPROVED (UL 489 ALSO AVAILABLE)
- DIN RAIL MOUNTED
- COMPACT 13 MM WIDTH
- ONE, TWO & THREE POLE
- CURRENT RATING UP TO 50 A
- 100% RATING CAPABILITY
- HYDRAULIC-MAGNETIC TECHNOLOGY

TECHNICAL DATA:

NUMBERS OF POLES	1, 2 & 3
MAXIMUM VOLTAGE	277/480 50/60 Hz
MINIMUM AMP RATING	1 AMP
MAXIMUM AMP RATING	50 AMP
INTERRUPTING CAP.	5000A @ 120V 1000A @ 277V 1000A @ 480V
DIELECTRIC STRENGTH	1960V 50/60 Hz
INSULATION RESISTANCE	100 MEGAOHM
OPERATING TEMP. RANGE	-40°C TO +60°C

PART NUMBERING SYSTEM:

C A P



E.G., 1 FOR 1 AMP, 15 FOR 15 AMP, ETC.

EXAMPLE: C10A1P = 10A SINGLE POLE CIRCUIT BREAKER





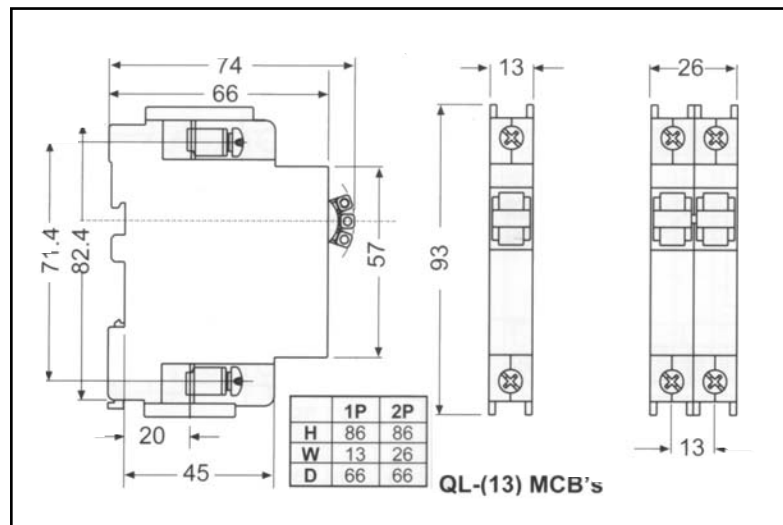
AMERICAN ELECTRICAL, INC.

INDUSTRIAL ELECTRICAL ACCESSORIES

425 SOUTHLAKE BLVD. • SUITE 9-B • RICHMOND, VA 23236 • (804) 379-2899 • FAX: (804) 379-8935

DIN RAIL MOUNTED CIRCUIT BREAKERS

UL 489 RATED



FEATURES:

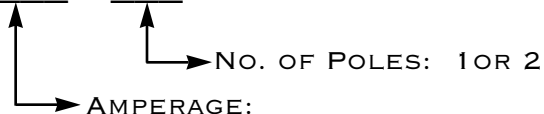
- UL 489 APPROVED (UL 1077 ALSO AVAILABLE)
- DIN RAIL MOUNTED
- COMPACT 13 MM WIDTH
- ONE & TWO POLE ONLY
- CURRENT RATING UP TO 25 A
- 100% RATING CAPABILITY
- HYDRAULIC-MAGNETIC TECHNOLOGY

TECHNICAL DATA:

NUMBERS OF POLES	1 AND 2 POLE ONLY
MAXIMUM VOLTAGE	120/240V 50/60 HZ
MINIMUM AMP RATING	1 AMP
MAXIMUM AMP RATING	25 AMP
INTERRUPTING CAP.	10,000 A
DIELECTRIC STRENGTH	1500V 50/60 HZ
INSULATION RESISTANCE	100 MEGAOHM
OPERATING TEMP. RANGE	-40°C TO +60°C

PART NUMBERING SYSTEM:

C **A** **P-489**



E.G., 1 FOR 1 AMP, 15 FOR 15 AMP, ETC.

EXAMPLE: C10A1P-489 = 10A SINGLE POLE CIRCUIT BREAKER UL 489 RATED

