

## 阅读申明

- 1.本站收集的数据手册和产品资料都来自互联网，版权归原作者所有。如读者和版权方有任何异议请及时告之，我们将妥善解决。
- 2.本站提供的中文数据手册是英文数据手册的中文翻译，其目的是协助用户阅读，该译文无法自动跟随原稿更新，同时也可能存在翻译上的不当。建议读者以英文原稿为参考以便获得更精准的信息。
- 3.本站提供的产品资料，来自厂商的技术支持或者使用者的心得体会等，其内容可能存在描述上的差异，建议读者做出适当判断。
- 4.如需与我们联系，请发邮件到marketing@iczoom.com，主题请标有“数据手册”字样。

## Read Statement

1. The datasheets and other product information on the site are all from network reference or other public materials, and the copyright belongs to the original author and original published source. If readers and copyright owners have any objections, please contact us and we will deal with it in a timely manner.
2. The Chinese datasheets provided on the website is a Chinese translation of the English datasheets. Its purpose is for reader's learning exchange only and do not involve commercial purposes. The translation cannot be automatically updated with the original manuscript, and there may also be improper translations. Readers are advised to use the English manuscript as a reference for more accurate information.
3. All product information provided on the website refer to solutions from manufacturers' technical support or users the contents may have differences in description, and readers are advised to take the original article as the standard.
4. If you have any questions, please contact us at marketing@iczoom.com and mark the subject with "Datasheets" .

## NH Fuse Links

500 Volts • 2 – 630 Amperes



Littelfuse European style NH fuse links are designed for the protection of conductors and motors. The gL-gG characteristic fuse links are generally used to protect cables and installation lines from overloads and short-circuits. The aM characteristic fuse links are used for the short-circuit protection of motors and switchgear. They are available in NH00C to NH3 sizes up to 630 amperes.

### Specifications

**Standards:** DIN 43.620, IEC 269-2-1  
**Approvals:** VDE  
**Example part number:** NH1CG25 (size, characteristic and amperage)

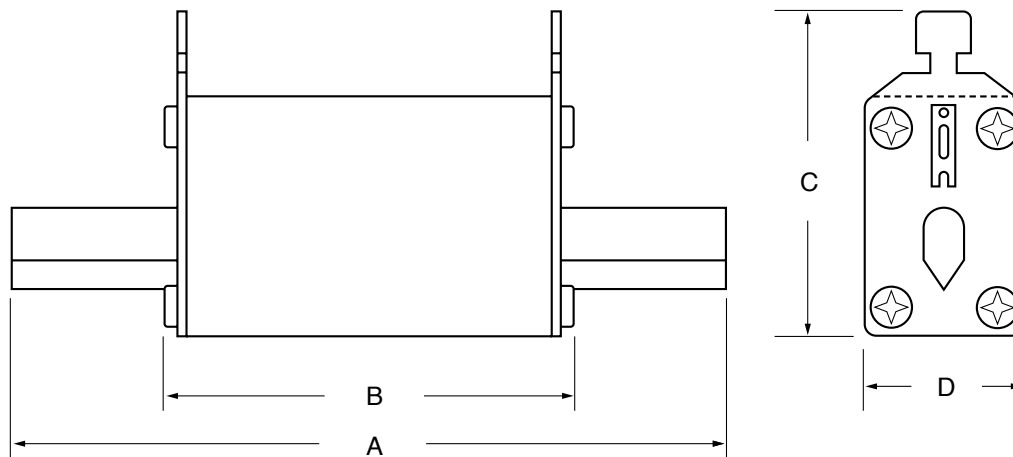
Size	Current Range	Voltage (AC/DC)	Interrupting Rating	Nominal Frequency	Selectivity
00C	2A up to 100A	500V/440V	120kA/25kA	45 - 62 Hz	1:1 25
00	2A up to 160A	500V/440V	120kA/25kA	45 - 62 Hz	1:1 25
0	6A up to 160A	500V/440V	120kA/25kA	45 - 62 Hz	1:1 25
1C	25A up to 160A	500V/440V	120kA/25kA	45 - 62 Hz	1:1 25
1	63A up to 250A	500V/440V	120kA/25kA	45 - 62 Hz	1:1 25
2C	40A up to 250A	500V/440V	120kA/25kA	45 - 62 Hz	1:1 25
2	125A up to 400A	500V/440V	120kA/25kA	45 - 62 Hz	1:1 25
3C	315A up to 400A	500V/440V	120kA/25kA	45 - 62 Hz	1:1 25
3	315A up to 630A	500V/440V	120kA/25kA	45 - 62 Hz	1:1 25

All NH fuse links incorporate a blown fuse indicator.

Amperage	gL-gG 500V					aM 500V			
	NH00C/NH00	NH0	NH1C/NH1	NH2C/NH2	NH3C/NH3	NH00M	NH1	NH2	NH3
2	NH00CG2	—	—	—	—	NH00M2	—	—	—
4	NH00CG4	—	—	—	—	NH00M4	—	—	—
6	NH00CG6	NH0G6	—	—	—	NH00M6	—	—	—
10	NH00CG10	NH0G10	—	—	—	NH00M10	—	—	—
16	NH00CG16	NH0G16	—	—	—	NH00M16	—	—	—
20	NH00CG20	NH0G20	—	—	—	NH00M20	—	—	—
25	NH00CG25	NH0G25	NH1CG25	—	—	NH00M25	—	—	—
32	NH00CG32	NH0G32	NH1CG32	—	—	NH00M32	—	—	—
35	NH00CG35	NH0G35	NH1CG35	—	—	NH00M35	—	—	—
40	NH00CG40	NH0G40	NH1CG40	NH2CG40	—	NH00M40	—	—	—
50	NH00CG50	NH0G50	NH1CG50	NH2CG50	—	NH00M50	—	—	—
63	NH00CG63	NH0G63	NH1CG63	NH2CG63	—	NH00M63	NH1M63	—	—
80	NH00CG80	NH0G80	NH1CG80	NH2CG80	—	NH00M80	NH1M80	—	—
100	NH00CG100	NH0G100	NH1CG100	NH2CG100	—	NH00M100	NH1M100	—	—
125	NH00G125	NH0G125	NH1CG125	NH2CG125	—	NH00M125	NH1M125	NH2M125	—
160	NH00G160	NH0G160	NH1CG160	NH2CG160	—	NH00M160	NH1M160	NH2M160	—
200	—	—	NH1G200	NH2CG200	—	—	NH1M200	NH2M200	—
224	—	—	NH1G224	NH2CG224	—	—	NH1M224	NH2M224	—
250	—	—	NH1G250	NH2CG250	—	—	NH1M250	NH2M250	—
300	—	—	—	NH2G300	—	—	—	NH2M300	—
315	—	—	—	NH2G315	NH3CG315	—	—	NH2M315	NH3M315
355	—	—	—	NH2G355	NH3CG355	—	—	NH2M355	NH3M355
400	—	—	—	NH2G400	NH3CG400	—	—	NH2M400	NH3M400
425	—	—	—	—	NH3G425	—	—	—	—
500	—	—	—	—	NH3G500	—	—	—	NH3M500
630	—	—	—	—	NH3G630	—	—	—	NH3M630

## NH Fuse Links

### NH Fuse Link Dimensions



Size	Current Range	Dimensions (mm)			
		A	B	C	D
00C	2-100A	78.00	54.00	51.30	20.00
00	2-160A	78.00	54.00	56.40	30.00
0	6-160A	123.95	70.11	53.34	30.00
1C	25-160A	135.00	75.00	56.40	30.00
1	63-250A	135.00	75.00	64.30	40.00
2C	40-250A	150.00	75.00	64.26	40.00
2	125-400A	150.00	75.00	74.20	50.00
3C	315-400A	150.00	75.00	74.20	50.00
3	315-630A	150.00	75.00	87.37	71.88

## NH Bases / Disconnects

### Fuse Bases

Part No.	Size	Rating	Connection
NHB00B	00	690V/160A	Bolt
NHB00C	00	690V/160A	V-Clamp
NHB1B	1	690V/250A	Bolt
NHB2B	2	690V/400A	Bolt
NHB3B	3	690V/630A	Bolt

All fuse bases are single pole and gangable.

### Fuse Disconnects

Part No.	Size	Rating	Connection
NHFS00B	C00	690V/100A	Bolt
NHFS0B	0	690V/160A	Bolt
NHFS1B	1	690V/250A	Bolt
NHFS2B	2	690V/400A	Bolt
NHFS3B	3	690V/630A	Bolt

All disconnects are 3 pole.

Contact factory for dimensional information.

