

阅读申明

- 1.本站收集的数据手册和产品资料都来自互联网，版权归原作者所有。如读者和版权方有任何异议请及时告之，我们将妥善解决。
- 2.本站提供的中文数据手册是英文数据手册的中文翻译，其目的是协助用户阅读，该译文无法自动跟随原稿更新，同时也可能存在翻译上的不当。建议读者以英文原稿为参考以便获得更精准的信息。
- 3.本站提供的产品资料，来自厂商的技术支持或者使用者的心得体会等，其内容可能存在描述上的差异，建议读者做出适当判断。
- 4.如需与我们联系，请发邮件到marketing@iczoom.com，主题请标有“数据手册”字样。

Read Statement

1. The datasheets and other product information on the site are all from network reference or other public materials, and the copyright belongs to the original author and original published source. If readers and copyright owners have any objections, please contact us and we will deal with it in a timely manner.
2. The Chinese datasheets provided on the website is a Chinese translation of the English datasheets. Its purpose is for reader's learning exchange only and do not involve commercial purposes. The translation cannot be automatically updated with the original manuscript, and there may also be improper translations. Readers are advised to use the English manuscript as a reference for more accurate information.
3. All product information provided on the website refer to solutions from manufacturers' technical support or users the contents may have differences in description, and readers are advised to take the original article as the standard.
4. If you have any questions, please contact us at marketing@iczoom.com and mark the subject with "Datasheets" .

Features

- Optimized for 1.8V systems
 - As fast as 7.1 ns pin-to-pin delays
 - As low as 14 μ A quiescent current
- Industry's best 0.18 micron CMOS CPLD
 - Optimized architecture for effective logic synthesis
 - Multi-voltage I/O operation — 1.5V to 3.3V
- Available in multiple package options
 - 208-pin PQFP with 173 user I/O
 - 256-ball FT (1.0mm) BGA with 212 user I/O
 - 324-ball FG (1.0mm) BGA with 270 user I/O
 - Pb-free available for all packages
- Advanced system features
 - Fastest in system programming
 - 1.8V ISP using IEEE 1532 (JTAG) interface
 - IEEE1149.1 JTAG Boundary Scan Test
 - Optional Schmitt-trigger input (per pin)
 - Unsurpassed low power management
 - DataGATE enable signal control
 - Four separate I/O banks
 - RealDigital 100% CMOS product term generation
 - Flexible clocking modes
 - Optional DualEDGE triggered registers
 - Clock divider (divide by 2,4,6,8,10,12,14,16)
 - CoolCLOCK
 - Global signal options with macrocell control
 - Multiple global clocks with phase selection per macrocell
 - Multiple global output enables
 - Global set/reset
 - Advanced design security
 - PLA architecture
 - Superior pinout retention
 - 100% product term routability across function block
 - Open-drain output option for Wired-OR and LED drive
 - Optional bus-hold, 3-state or weak pullup on selected I/O pins
 - Optional configurable grounds on unused I/Os
 - Mixed I/O voltages compatible with 1.5V, 1.8V, 2.5V, and 3.3V logic levels
 - SSTL2-1, SSTL3-1, and HSTL-1 I/O compatibility
 - Hot Pluggable

Refer to the CoolRunner™-II family data sheet for architecture description.

Description

The CoolRunner-II 512-macrocell device is designed for both high performance and low power applications. This lends power savings to high-end communication equipment and high speed to battery operated devices. Due to the low power stand-by and dynamic operation, overall system reliability is improved.

This device consists of thirty two Function Blocks inter-connected by a low power Advanced Interconnect Matrix (AIM). The AIM feeds 40 true and complement inputs to each Function Block. The Function Blocks consist of a 40 by 56 P-term PLA and 16 macrocells which contain numerous configuration bits that allow for combinational or registered modes of operation.

Additionally, these registers can be globally reset or preset and configured as a D or T flip-flop or as a D latch. There are also multiple clock signals, both global and local product term types, configured on a per macrocell basis. Output pin configurations include slew rate limit, bus hold, pull-up, open drain and programmable grounds. A Schmitt-trigger input is available on a per input pin basis. In addition to storing macrocell output states, the macrocell registers may be configured as "direct input" registers to store signals directly from input pins.

Clocking is available on a global or Function Block basis. Three global clocks are available for all Function Blocks as a synchronous clock source. Macrocell registers can be individually configured to power up to the zero or one state. A global set/reset control line is also available to asynchronously set or reset selected registers during operation. Additional local clock, synchronous clock-enable, asynchronous set/reset and output enable signals can be formed using product terms on a per-macrocell or per-Function Block basis.

A DualEDGE flip-flop feature is also available on a per macrocell basis. This feature allows high performance synchronous operation based on lower frequency clocking to help reduce the total power consumption of the device.

Circuitry has also been included to divide one externally supplied global clock (GCK2) by eight different selections. This yields divide by even and odd clock frequencies.

The use of the clock divide (division by 2) and DualEDGE flip-flop gives the resultant CoolCLOCK feature.

DataGATE is a method to selectively disable inputs of the CPLD that are not of interest during certain points in time.

By mapping a signal to the DataGATE function, lower power can be achieved due to reduction in signal switching.

Another feature that eases voltage translation is I/O banking. Four I/O banks are available on the CoolRunner-II 512 macrocell device that permits easy interfacing to 3.3V, 2.5V, 1.8V, and 1.5V devices.

The CoolRunner-II 512 macrocell CPLD is I/O compatible with various JEDEC I/O standards (see [Table 1](#)). This device is also 1.5V I/O compatible with the use of Schmitt-trigger inputs.

RealDigital Design Technology

Xilinx CoolRunner-II CPLDs are fabricated on a 0.18 micron process technology which is derived from leading edge FPGA product development. CoolRunner-II CPLDs employ RealDigital, a design technique that makes use of CMOS technology in both the fabrication and design methodology. RealDigital design technology employs a cascade of CMOS gates to implement sum of products instead of traditional sense amplifier methodology. Due to this technology, Xilinx CoolRunner-II CPLDs achieve both high-performance and low power operation.

Supported I/O Standards

The CoolRunner-II 512 macrocell features LVCMOS, LVTTTL, SSTL, and HSTL I/O implementations. See [Table 1](#)

for I/O standard voltages. The LVTTTL I/O standard is a general purpose EIA/JEDEC standard for 3.3V applications that use an LVTTTL input buffer and Push-Pull output buffer. The LVCMOS standard is used in 3.3V, 2.5V, 1.8V applications. Both HSTL and SSTL I/O standards make use of a V_{REF} pin for JEDEC compliance. CoolRunner-II CPLDs are also 1.5V I/O compatible with the use of Schmitt-trigger inputs.

Table 1: I/O Standards for XC2C512⁽¹⁾

IOSTANDARD Attribute	Output V_{CCIO}	Input V_{CCIO}	Input V_{REF}	Board Termination Voltage V_{TT}
LVTTTL	3.3	3.3	N/A	N/A
LVCMOS33	3.3	3.3	N/A	N/A
LVCMOS25	2.5	2.5	N/A	N/A
LVCMOS18	1.8	1.8	N/A	N/A
LVCMOS15 ⁽²⁾	1.5	1.5	N/A	N/A
HSTL_1	1.5	1.5	0.75	0.75
SSTL2_1	2.5	2.5	1.25	1.25
SSTL3_1	3.3	3.3	1.5	1.5

(1) For information on Vref pins, see [XAPP399](#).

(2) LVCMOS15 requires Schmitt-trigger inputs.

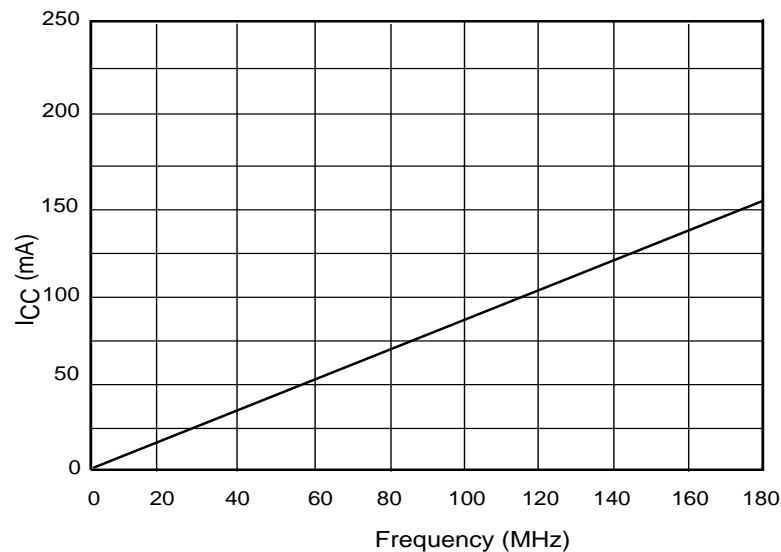


Figure 1: I_{CC} vs Frequency

DS096_01_030705

Table 2: I_{CC} vs Frequency (LVCMOS 1.8V $T_A = 25^\circ\text{C}$)⁽¹⁾

	Frequency (MHz)									
	0	20	40	60	80	100	120	140	160	180
Typical I_{CC} (mA)	0.025	17.22	34.37	52.04	69.44	86.85	105.13	122.68	140.23	157.78

Notes:

- 16-bit up/down, Resettable binary counter (one counter per function block).

Absolute Maximum Ratings

Symbol	Description	Value	Units
V_{CC}	Supply voltage relative to ground	-0.5 to 2.0	V
V_{CCIO}	Supply voltage for output drivers	-0.5 to 4.0	V
$V_{JTAG}^{(2)}$	JTAG input voltage limits	-0.5 to 4.0	V
V_{CCAUX}	JTAG input supply voltage	-0.5 to 4.0	V
$V_{IN}^{(1)}$	Input voltage relative to ground ⁽¹⁾	-0.5 to 4.0	V
$V_{TS}^{(1)}$	Voltage applied to 3-state output ⁽¹⁾	-0.5 to 4.0	V
$T_{STG}^{(3)}$	Storage Temperature (ambient)	-65 to +150	°C
T_J	Junction Temperature	+150	°C

Notes:

- Maximum DC undershoot below GND must be limited to either 0.5V or 10 mA, whichever is easiest to achieve. During transitions, the device pins may undershoot to -2.0V or overshoot to +4.5V, provided this over or undershoot lasts less than 10 ns and with the forcing current being limited to 200 mA.
- Valid over commercial temperature range.
- For soldering guidelines and thermal considerations, see the [Device Packaging](#) information on the Xilinx website. For Pb free packages, see [XAPP427](#).

Recommended Operating Conditions

Symbol	Parameter	Min	Max	Units	
V_{CC}	Supply voltage for internal logic and input buffers	Commercial $T_A = 0^\circ\text{C}$ to $+70^\circ\text{C}$	1.7	1.9	V
		Industrial $T_A = -40^\circ\text{C}$ to $+85^\circ\text{C}$	1.7	1.9	V
V_{CCIO}	Supply voltage for output drivers @ 3.3V operation	3.0	3.6	V	
	Supply voltage for output drivers @ 2.5V operation	2.3	2.7	V	
	Supply voltage for output drivers @ 1.8V operation	1.7	1.9	V	
	Supply voltage for output drivers @ 1.5V operation	1.4	1.6	V	
V_{CCAUX}	JTAG programming	1.7	3.6	V	

DC Electrical Characteristics (Over Recommended Operating Conditions)

Symbol	Parameter	Test Conditions	Typical	Max.	Units
I_{CCSB}	Standby current Commercial	$V_{CC} = 1.9\text{V}$, $V_{CCIO} = 3.6\text{V}$	50	240	μA
I_{CCSB}	Standby current Industrial	$V_{CC} = 1.9\text{V}$, $V_{CCIO} = 3.6\text{V}$	150	400	μA
$I_{CC}^{(1)}$	Dynamic current	$f = 1\text{ MHz}$	-	1	mA
		$f = 50\text{ MHz}$	-	55	mA
C_{JTAG}	JTAG input capacitance	$f = 1\text{ MHz}$	-	10	pF
C_{CLK}	Global clock input capacitance	$f = 1\text{ MHz}$	-	12	pF
C_{IO}	I/O capacitance	$f = 1\text{ MHz}$	-	10	pF
$I_{IL}^{(2)}$	Input leakage current	$V_{IN} = 0\text{V}$ or V_{CCIO} to 3.9V	-	+/-1	μA
$I_{IH}^{(2)}$	I/O High-Z leakage	$V_{IN} = 0\text{V}$ or V_{CCIO} to 3.9V	-	+/-1	μA

Notes:

- 16-bit up/down, Resettable binary counter (one counter per function block) tested at $V_{CC} = V_{CCIO} = 1.9\text{V}$.
- See Quality and Reliability section of the CoolRunner-II family data sheet.

LVC MOS 3.3V and LV TTL 3.3V DC Voltage Specifications

Symbol	Parameter	Test Conditions	Min.	Max.	Units
V_{CCIO}	Input source voltage	-	3.0	3.6	V
V_{IH}	High level input voltage	-	2	3.9	V
V_{IL}	Low level input voltage	-	-0.3	0.8	V
V_{OH}	High level output voltage	$I_{OH} = -8 \text{ mA}, V_{CCIO} = 3\text{V}$	$V_{CCIO} - 0.4\text{V}$	-	V
		$I_{OH} = -0.1 \text{ mA}, V_{CCIO} = 3\text{V}$	$V_{CCIO} - 0.2\text{V}$	-	V
V_{OL}	Low level output voltage	$I_{OL} = 8 \text{ mA}, V_{CCIO} = 3\text{V}$	-	0.4	V
		$I_{OL} = 0.1 \text{ mA}, V_{CCIO} = 3\text{V}$	-	0.2	V

LVC MOS 2.5V DC Voltage Specifications

Symbol	Parameter	Test Conditions	Min.	Max.	Units
V_{CCIO}	Input source voltage	-	2.3	2.7	V
V_{IH}	High level input voltage	-	1.7	$V_{CCIO} + 0.3^{(1)}$	V
V_{IL}	Low level input voltage	-	-0.3	0.7	V
V_{OH}	High level output voltage	$I_{OH} = -8 \text{ mA}, V_{CCIO} = 2.3\text{V}$	$V_{CCIO} - 0.4\text{V}$	-	V
		$I_{OH} = -0.1 \text{ mA}, V_{CCIO} = 2.3\text{V}$	$V_{CCIO} - 0.2\text{V}$	-	V
V_{OL}	Low level output voltage	$I_{OL} = 8 \text{ mA}, V_{CCIO} = 2.3\text{V}$	-	0.4	V
		$I_{OL} = 0.1 \text{ mA}, V_{CCIO} = 2.3\text{V}$	-	0.2	V

(1) The V_{IH} Max value represents the JEDEC specification for LVC MOS25. The CoolRunner-II input buffer can tolerate up to 3.9V without physical damage.

LVC MOS 1.8V DC Voltage Specifications

Symbol	Parameter	Test Conditions	Min.	Max.	Units
V_{CCIO}	Input source voltage	-	1.7	1.9	V
V_{IH}	High level input voltage	-	$0.65 \times V_{CCIO}$	$V_{CCIO} + 0.3^{(1)}$	V
V_{IL}	Low level input voltage	-	-0.3	$0.35 \times V_{CCIO}$	V
V_{OH}	High level output voltage	$I_{OH} = -8 \text{ mA}, V_{CCIO} = 1.7\text{V}$	$V_{CCIO} - 0.45$	-	V
		$I_{OH} = -0.1 \text{ mA}, V_{CCIO} = 1.7\text{V}$	$V_{CCIO} - 0.2$	-	V
V_{OL}	Low level output voltage	$I_{OL} = 8 \text{ mA}, V_{CCIO} = 1.7\text{V}$	-	0.45	V
		$I_{OL} = 0.1 \text{ mA}, V_{CCIO} = 1.7\text{V}$	-	0.2	V

(1) The V_{IH} Max value represents the JEDEC specification for LVC MOS18. The CoolRunner-II input buffer can tolerate up to 3.9V without physical damage.

LVC MOS 1.5V DC Voltage Specifications⁽¹⁾

Symbol	Parameter	Test Conditions	Min.	Max.	Units
V_{CCIO}	Input source voltage	-	1.4	1.6	V
V_{IH}	High level input voltage	-	$0.5 \times V_{CCIO}$	$0.8 \times V_{CCIO}$	V
V_{IL}	Low level input voltage	-	$0.2 \times V_{CCIO}$	$0.5 \times V_{CCIO}$	V

Symbol	Parameter	Test Conditions	Min.	Max.	Units
V _{OH}	High level output voltage	I _{OH} = -8 mA, V _{CCIO} = 1.4V	V _{CCIO} - 0.45	-	V
		I _{OH} = -0.1 mA, V _{CCIO} = 1.4V	V _{CCIO} - 0.2	-	V
V _{OL}	Low level output voltage	I _{OL} = 8 mA, V _{CCIO} = 1.4V	-	0.4	V
		I _{OL} = 0.1 mA, V _{CCIO} = 1.4V	-	0.2	V

Notes:

1. Hysteresis used on 1.5V inputs.

Schmitt Trigger Input DC Voltage Specifications

Symbol	Parameter	Test Conditions	Min.	Max.	Units
V _{CCIO}	Input source voltage		1.4	3.9	V
V _{T+}	Input hysteresis threshold voltage		0.5 x V _{CCIO}	0.8 x V _{CCIO}	V
V _{T-}			0.2 x V _{CCIO}	0.5 x V _{CCIO}	V

SSTL2-1 DC Voltage Specifications

Symbol	Parameter	Test Conditions	Min.	Typ	Max.	Units
V _{CCIO}	Input source voltage		2.3	2.5	2.7	V
V _{REF} ⁽¹⁾	Input reference voltage		1.15	1.25	1.35	V
V _{TT} ⁽²⁾	Termination voltage		V _{REF} - 0.04	1.25	V _{REF} + 0.04	V
V _{IH}	High level input voltage		V _{REF} + 0.18	-	3.9	V
V _{IL}	Low level input voltage		-0.3	-	V _{REF} - 0.18	V
V _{OH}	High level output voltage	I _{OH} = -8 mA, V _{CCIO} = 2.3V	V _{CCIO} - 0.62	-	-	V
V _{OL}	Low level output voltage	I _{OL} = 8 mA, V _{CCIO} = 2.3V	-	-	0.54	V

Notes:

1. V_{REF} should track the variations in V_{CCIO}, also peak to peak AC noise on V_{REF} may not exceed ±2% V_{REF}
2. V_{TT} of transmitting device must track V_{REF} of receiving devices

SSTL3-1 DC Voltage Specifications

Symbol	Parameter	Test Conditions	Min.	Typ	Max.	Units
V _{CCIO}	Input source voltage		3.0	3.3	3.6	V
V _{REF} ⁽¹⁾	Input reference voltage		1.3	1.5	1.7	V
V _{TT} ⁽²⁾	Termination voltage		V _{REF} - 0.05	1.5	V _{REF} + 0.05	V
V _{IH}	High level input voltage		V _{REF} + 0.2	-	V _{CCIO} + 0.3	V
V _{IL}	Low level input voltage		-0.3	-	V _{REF} - 0.2	V
V _{OH}	High level output voltage	I _{OH} = -8 mA, V _{CCIO} = 3V	V _{CCIO} - 1.1	-	-	V
V _{OL}	Low level output voltage	I _{OL} = 8 mA, V _{CCIO} = 3V	-	-	0.7	V

Notes:

1. V_{REF} should track the variations in V_{CCIO}, also peak to peak AC noise on V_{REF} may not exceed ±2% V_{REF}
2. V_{TT} of transmitting device must track V_{REF} of receiving devices

HSTL1 DC Voltage Specifications

Symbol	Parameter	Test Conditions	Min.	Typ	Max.	Units
V_{CCIO}	Input source voltage		1.4	1.5	1.6	V
$V_{REF}^{(1)}$	Input reference voltage		0.68	0.75	0.90	V
$V_{TT}^{(2)}$	Termination voltage		-	$V_{CCIO} \times 0.5$	-	V
V_{IH}	High level input voltage		$V_{REF} + 0.1$	-	1.9	V
V_{IL}	Low level input voltage		-0.3	-	$V_{REF} - 0.1$	V
V_{OH}	High level output voltage	$I_{OH} = -8 \text{ mA}, V_{CCIO} = 1.7\text{V}$	$V_{CCIO} - 0.4$	-	-	V
V_{OL}	Low level output voltage	$I_{OL} = 8 \text{ mA}, V_{CCIO} = 1.7\text{V}$	-	-	0.4	V

Notes:

- V_{REF} should track the variations in V_{CCIO} , also peak-to-peak AC noise on V_{REF} may not exceed $\pm 2\% V_{REF}$
- V_{TT} of transmitting device must track V_{REF} of receiving devices

AC Electrical Characteristics Over Recommended Operating Conditions

Symbol	Parameter	-7		-10		Units
		Min.	Max.	Min.	Max.	
T_{PD1}	Propagation delay (single p-term)	-	7.1	-	9.2	ns
T_{PD2}	Propagation delay (OR array)	-	7.5	-	10.0	ns
T_{SUD}	Direct input register set-up time	3.4	-	4.0	-	ns
T_{SU1}	Setup time fast (single p-term)	2.6	-	3.1	-	ns
T_{SU2}	Setup time (OR array)	3.0	-	3.9	-	ns
T_H	Direct input register hold time	0	-	0	-	ns
T_H	P-term hold time	0	-	0	-	ns
T_{CO}	Clock to output	-	5.8	-	7.9	ns
$F_{TOGGLE}^{(1)}$	Internal toggle rate	-	250	-	166	MHz
$F_{SYSTEM1}^{(2)}$	Maximum system frequency	-	179	-	128	MHz
$F_{SYSTEM2}^{(2)}$	Maximum system frequency	-	167	-	116	MHz
$F_{EXT1}^{(3)}$	Maximum external frequency	-	119	-	91	MHz
$F_{EXT2}^{(3)}$	Maximum external frequency	-	114	-	85	MHz
T_{PSUD}	Direct input register p-term clock setup time	2.1	-	2.8	-	ns
T_{PSU1}	P-term clock setup time (single p-term)	1.1	-	1.7	-	ns
T_{PSU2}	P-term clock setup time (OR array)	1.5	-	2.5	-	ns
T_{PHD}	Direct input register p-term clock hold time	0.1	-	0.4	-	ns
T_{PH}	P-term clock hold	1.3	-	1.7	-	ns
T_{PCO}	P-term clock to output	-	7.3	-	9.3	ns
T_{OE}/T_{OD}	Global OE to output enable/disable	-	6.5	-	9.2	ns
T_{POE}/T_{POD}	P-term OE to output enable/disable	-	7.5	-	10.2	ns
T_{MOE}/T_{MOD}	Macrocell driven OE to output enable/disable	-	8.6	-	12.5	ns
T_{PAO}	P-term set/reset to output valid	-	7.6	-	11.6	ns
T_{AO}	Global set/reset to output valid	-	7.5	-	11.5	ns
T_{SUEC}	Register clock enable setup time	2.8	-	3.2	-	ns
T_{HEC}	Register clock enable hold time	0	-	0	-	ns
T_{CW}	Global clock pulse width High or Low	2.0	-	3.0	-	ns
T_{PCW}	P-term pulse width High or Low	7.5	-	10.0	-	ns
T_{APRPW}	Asynchronous preset/reset pulse width (High or Low)	7.5	-	10.0	-	ns
T_{DGSU}	Set-up before DataGATE latch assertion	0.0	-	0.0	-	ns
T_{DGH}	Hold to DataGATE latch assertion	4.0	-	6.0	-	ns
T_{DGR}	DataGATE recovery to new data	-	9.3	-	11.0	ns
T_{DGW}	DataGATE low pulse width	3.0	-	5.0	-	ns
T_{CDRSU}	CDRST setup time before falling edge GCLK2	1.7	-	2.5	-	ns
T_{CDRH}	Hold time CDRST after falling edge GCLK2	0	-	0	-	ns
$T_{CONFIG}^{(4)}$	Configuration time	-	400	-	400	μ s

Notes:

- F_{TOGGLE} is the maximum clock frequency to which a T-Flip Flop can reliably toggle (see the CoolRunner-II family data sheet for more information).
- $F_{SYSTEM1}$ ($1/T_{CYCLE}$) is the internal operating frequency for a device fully populated with 16-bit Resettable binary counter through one p-term per macrocell while $F_{SYSTEM2}$ is through the OR array.
- F_{EXT1} ($1/T_{SU1}+T_{CO}$) is the maximum external frequency using one p-term while F_{EXT2} is through the OR array
- Typical configuration current during T_{CONFIG} is approximately 15mA

Internal Timing Parameters⁽¹⁾

Symbol	Parameter ⁽¹⁾	-7		-10		Units
		Min.	Max.	Min.	Max.	
Buffer Delays						
T _{IN}	Input buffer delay	-	3.1	-	3.8	ns
T _{DIN}	Direct data register input delay	-	4.4	-	5.5	ns
T _{GCK}	Global Clock buffer delay	-	2.4	-	3.3	ns
T _{GSR}	Global set/reset buffer delay	-	3.8	-	4.6	ns
T _{GTS}	Global 3-state buffer delay	-	2.9	-	3.7	ns
T _{OUT}	Output buffer delay	-	3.0	-	3.9	ns
T _{EN}	Output buffer enable/disable delay	-	3.6	-	5.5	ns
P-term Delays						
T _{CT}	Control term delay	-	0.8	-	0.9	ns
T _{LOG1}	Single P-term delay adder	-	0.5	-	0.8	ns
T _{LOG2}	Multiple P-term delay adder	-	0.4	-	0.8	ns
Macrocell Delay						
T _{PDI}	Input to output valid	-	0.5	-	0.7	ns
T _{SUI}	Setup before clock	1.4	-	1.8	-	ns
T _{HI}	Hold after clock	0	-	0	-	ns
T _{ECSU}	Enable clock setup time	1.3	-	1.8	-	ns
T _{ECHO}	Enable clock hold time	0	-	0	-	ns
T _{COI}	Clock to output valid	-	0.4	-	0.7	ns
T _{AOI}	Set/reset to output valid	-	0.7	-	3.0	ns
T _{CDBL}	Clock doubler delay	-	0	-	0	ns
Feedback Delays						
T _F	Feedback delay	-	3.3	-	4.5	ns
T _{OEM}	Macrocell to global OE delay	-	2.2	-	3.0	ns
I/O Standard Time Adder Delays 1.5V CMOS						
T _{HYS15}	Hysteresis input adder	-	3.0	-	4.0	ns
T _{OUT15}	Output adder	-	0.8	-	1.0	ns
T _{SLEW15}	Output slew rate adder	-	3.0	-	4.0	ns
I/O Standard Time Adder Delays 1.8V CMOS						
T _{HYS18}	Hysteresis input adder	-	2.0	-	3.0	ns
T _{OUT18}	Output adder	-	0	-	0	ns
T _{SLEW18}	Output slew rate adder	-	2.5	-	4.0	ns

Internal Timing Parameters⁽¹⁾ (Continued)

Symbol	Parameter ⁽¹⁾	-7		-10		Units
		Min.	Max.	Min.	Max.	
I/O Standard Time Adder Delays 2.5V CMOS						
T _{IN25}	Standard input adder	-	0.6	-	1.0	ns
T _{HYS25}	Hysteresis input adder	-	1.5	-	3.0	ns
T _{OUT25}	Output adder	-	0.8	-	2.0	ns
T _{SLEW25}	Output slew rate adder	-	3.0	-	4.0	ns
I/O Standard Time Adder Delays 3.3V CMOS/TTL						
T _{IN33}	Standard input adder	-	0.5	-	2.0	ns
T _{HYS33}	Hysteresis input adder	-	1.2	-	3.0	ns
T _{OUT33}	Output adder	-	1.2	-	3.0	ns
T _{SLEW33}	Output slew rate adder	-	3.0	-	4.0	ns
I/O Standard Time Adder Delays HSTL, SSTL						
SSTL2-1	Input adder to T _{IN} , T _{DIN} , T _{GCK} , T _{GSR} , T _{GTS}	-	0.4	-	1.0	ns
	Output adder to T _{OUT}	-	-0.5	-	0.0	ns
SSTL3-1	Input adder to T _{IN} , T _{DIN} , T _{GCK} , T _{GSR} , T _{GTS}	-	0.6	-	1.0	ns
	Output adder to T _{OUT}	-	0.0	-	0.0	ns
HSTL-1	Input adder to T _{IN} , T _{DIN} , T _{GCK} , T _{GSR} , T _{GTS}	-	0.8	-	1.0	ns
	Output adder to T _{OUT}	-	0.0	-	0.0	ns

Notes:

- 1.5 ns input pin signal rise/fall.

Switching Characteristics

AC Test Circuit

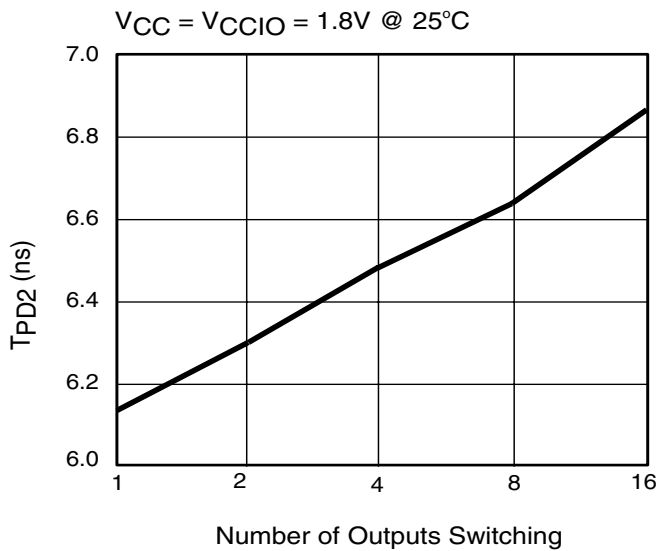
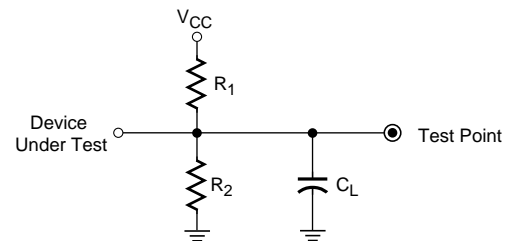


Figure 2: Derating Curve for T_{PD}

DS096_02_022003



Output Type	R ₁	R ₂	C _L
LVTTL33	268Ω	235Ω	35 pF
LVC MOS33	275Ω	275Ω	35 pF
LVC MOS25	188Ω	188Ω	35 pF
LVC MOS18	112.5Ω	112.5Ω	35 pF
LVC MOS15	150Ω	150Ω	35 pF

C_L includes test fixtures and probe capacitance.
1.5 nsec maximum rise/fall times on inputs.

DS_ACT_08_14_02

Figure 3: Load Circuit

Typical I/O Output Curves

The I/V curve illustrates the nominal amount of current that an I/O can source/sink at different voltage levels.

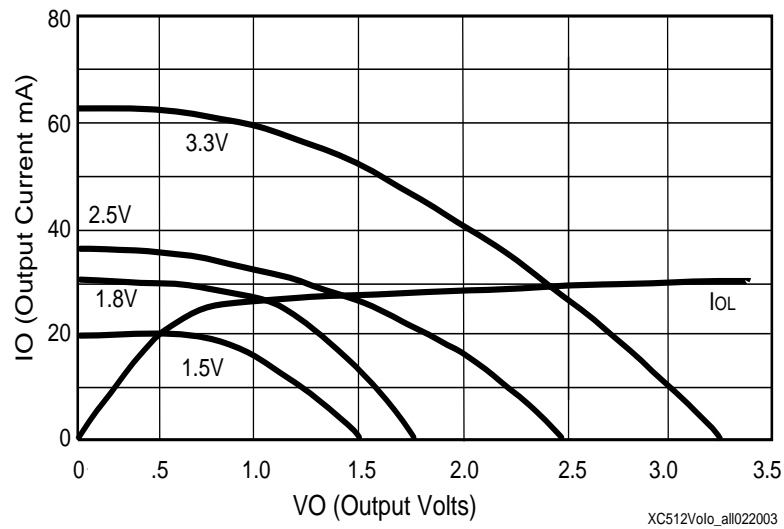


Figure 4: Typical I/V Curves for XC2C512

Pin Descriptions

Function Block	Macro-cell	PQ208	FT256	FG324	I/O Bank
1(GTS0)	1	7	D4	C1	2
1	2	6	B2	C2	2
1(GTS3)	3	5	E3	B1	2
1	4	4	C3	B2	2
1	5	-	-	-	-
1	6	-	-	-	-
1	7	-	-	-	-
1	8	-	-	-	-
1	9	-	-	-	-
1	10	-	-	-	-
1	11	-	-	-	-
1	12	-	-	-	-
1(GTS2)	13	3	D3	D3	2
1	14	2	B3	C3	2
1	15	208	B4	A1	2
1(GSR)	16	206	C4	A2	2
2	1	-	A1	D2	2
2	2	8	-	D1	2
2	3	-	D2	F4	2
2	4	-	-	F3	2
2	5	-	-	-	-
2	6	-	-	-	-
2	7	-	-	-	-
2	8	-	-	-	-
2	9	-	-	-	-
2	10	-	-	-	-
2	11	-	-	-	-
2	12	-	-	-	-
2	13	-	C2	E2	2
2(GTS1)	14	9	E5	E1	2
2	15	10	B1	F2	2
2	16	12	E4	G4	2

Pin Descriptions (Continued)

Function Block	Macro-cell	PQ208	FT256	FG324	I/O Bank
3	1	205	-	B3	2
3	2	-	A2	C4	2
3	3	203	-	B4	2
3	4	-	C5	C5	2
3	5	202	A3	B5	2
3	6	-	-	-	-
3	7	-	-	-	-
3	8	-	-	-	-
3	9	-	-	-	-
3	10	-	-	-	-
3	11	-	-	-	-
3	12	-	-	-	-
3	13	201	E7	A3	2
3	14	-	A4	A4	2
3	15	200	C6	D6	2
3	16	199	B5	A5	2
4	1	-	C1	G3	2
4	2	14	E2	G2	2
4	3	-	F2	G1	2
4	4	15	E6	H4	2
4	5	-	-	-	-
4	6	-	-	-	-
4	7	-	-	-	-
4	8	-	-	-	-
4	9	-	-	-	-
4	10	-	-	-	-
4	11	-	-	-	-
4	12	-	-	-	-
4	13	-	F3	H3	2
4	14	16	D1	H2	2
4	15	17	G4	H1	2
4	16	18	E1	J4	2

Pin Descriptions (Continued)

Function Block	Macro-cell	PQ208	FT256	FG324	I/O Bank
5	1	198	D6	C6	2
5	2	197	A5	B6	2
5	3	196	E8	A6	2
5	4	195	B6	D7	2
5	5	194	C7	C7	2
5	6	-	-	-	-
5	7	-	-	-	-
5	8	-	-	-	-
5	9	-	-	-	-
5	10	-	-	-	-
5	11	-	-	-	-
5	12	-	-	-	-
5	13	193	-	B7	2
5	14	-	A6	A7	2
5	15	192	D7	D8	2
5	16	-	B7	C8	2
6	1	19	G3	J3	2
6	2	20	G2	J2	2
6	3	21	-	J1	2
6	4	-	F5	K4	2
6	5	-	-	-	-
6	6	-	-	-	-
6	7	-	-	-	-
6	8	-	-	-	-
6	9	-	-	-	-
6	10	-	-	-	-
6	11	-	-	-	-
6	12	-	-	-	-
6	13	-	-	K3	2
6	14	-	F1	K2	2
6	15	-	-	K1	2
6	16	-	G5	L1	2

Pin Descriptions (Continued)

Function Block	Macro-cell	PQ208	FT256	FG324	I/O Bank
7	1	191	-	B8	2
7	2	-	E9	A8	2
7	3	189	A7	D9	2
7	4	188	D8	C9	2
7	5	187	B8	B9	2
7	6	-	-	-	-
7	7	-	-	-	-
7	8	-	-	-	-
7	9	-	-	-	-
7	10	-	-	-	-
7	11	-	-	-	-
7	12	-	-	-	-
7	13	186	C8	A9	2
7	14	185	A8	D10	2
7	15	184	E11	C10	2
7	16	183	E10	B10	2
8	1	-	H2	L4	2
8	2	22	-	L3	2
8	3	23	H4	L2	2
8	4	-	-	M1	2
8	5	-	-	-	-
8	6	-	-	-	-
8	7	-	-	-	-
8	8	-	-	-	-
8	9	-	-	-	-
8	10	-	-	-	-
8	11	-	-	-	-
8	12	-	-	-	-
8	13	-	G1	M2	2
8	14	25	H3	M3	2
8	15	-	H1	M4	2
8	16	-	H5	N1	2

Pin Descriptions (Continued)

Function Block	Macro-cell	PQ208	FT256	FG324	I/O Bank
9	1	-	-	AA2	1
9	2	50	N3	AB1	1
9	3	49	-	AA1	1
9	4	48	-	W4	1
9	5	-	-	-	-
9	6	-	-	-	-
9	7	-	-	-	-
9	8	-	-	-	-
9	9	-	-	-	-
9	10	-	-	-	-
9	11	-	-	-	-
9	12	-	-	-	-
9	13	-	R1	Y3	1
9	14	47	N4	Y2	1
9	15	-	N2	W3	1
9(GCK1)	16	46	M3	Y1	1
10(CDRST)	1	51	P2	AB2	1
10	2	54	P4	Y4	1
10(GCK2)	3	55	P5	AB3	1
10	4	56	R2	AA4	1
10	5	-	-	-	-
10	6	-	-	-	-
10	7	-	-	-	-
10	8	-	-	-	-
10	9	-	-	-	-
10	10	-	-	-	-
10	11	-	-	-	-
10	12	-	-	-	-
10	13	57	T1	Y5	1
10(DGE)	14	58	T2	AA5	1
10	15	-	-	AB4	1
10	16	-	N5	W6	1

Pin Descriptions (Continued)

Function Block	Macro-cell	PQ208	FT256	FG324	I/O Bank
11	1	45	P1	W2	1
11	2	-	M4	W1	1
11(GCK0)	3	44	M2	V3	1
11	4	43	L3	U4	1
11	5	-	-	-	-
11	6	-	-	-	-
11	7	-	-	-	-
11	8	-	-	-	-
11	9	-	-	-	-
11	10	-	-	-	-
11	11	-	-	-	-
11	12	-	-	-	-
11	13	41	N1	V2	1
11	14	40	L4	V1	1
11	15	39	M1	U3	1
11	16	38	L5	U2	1
12	1	60	R4	AB5	1
12	2	61	M5	Y6	1
12	3	62	R5	AA6	1
12	4	63	R6	AB6	1
12	5	64	-	W7	1
12	6	-	-	-	-
12	7	-	-	-	-
12	8	-	-	-	-
12	9	-	-	-	-
12	10	-	-	-	-
12	11	-	-	-	-
12	12	-	-	-	-
12	13	65	N6	Y7	1
12	14	66	-	AA7	1
12	15	67	R3	AB7	1
12	16	-	-	W8	1

Pin Descriptions (Continued)

Function Block	Macro-cell	PQ208	FT256	FG324	I/O Bank
13	1	37	-	U1	1
13	2	-	K4	T4	1
13	3	36	L2	T3	1
13	4	35	-	T2	1
13	5	-	-	-	-
13	6	-	-	-	-
13	7	-	-	-	-
13	8	-	-	-	-
13	9	-	-	-	-
13	10	-	-	-	-
13	11	-	-	-	-
13	12	-	-	-	-
13	13	-	K3	T1	1
13	14	34	L1	R4	1
13	15	32	K5	R3	1
13	16	-	K2	R2	1
14	1	-	M6	Y8	1
14	2	-	-	AA8	1
14	3	69	T3	AB8	1
14	4	70	P6	W9	1
14	5	71	T4	Y9	1
14	6	-	-	-	-
14	7	-	-	-	-
14	8	-	-	-	-
14	9	-	-	-	-
14	10	-	-	-	-
14	11	-	-	-	-
14	12	-	-	-	-
14	13	72	P7	AA9	1
14	14	-	-	AB9	1
14	15	73	T5	W10	1
14	16	-	-	Y10	1

Pin Descriptions (Continued)

Function Block	Macro-cell	PQ208	FT256	FG324	I/O Bank
15	1	31	J4	R1	1
15	2	-	K1	P4	1
15	3	30	J3	P3	1
15	4	29	J2	P2	1
15	5	-	-	-	-
15	6	-	-	-	-
15	7	-	-	-	-
15	8	-	-	-	-
15	9	-	-	-	-
15	10	-	-	-	-
15	11	-	-	-	-
15	12	-	-	-	-
15	13	28	J5	P1	1
15	14	27	J1	N4	1
15	15	-	-	N3	1
15	16	-	-	N2	1
16	1	74	N7	AA10	1
16	2	-	-	AB10	1
16	3	75	R7	AB11	1
16	4	76	M7	W11	1
16	5	77	T6	AA11	1
16	6	-	-	-	-
16	7	-	-	-	-
16	8	-	-	-	-
16	9	-	-	-	-
16	10	-	-	-	-
16	11	-	-	-	-
16	12	-	-	-	-
16	13	-	-	Y11	1
16	14	78	-	AB12	1
16	15	-	-	AA12	1
16	16	-	-	Y12	1

Pin Descriptions (Continued)

Function Block	Macro-cell	PQ208	FT256	FG324	I/O Bank
17	1	161	A16	A21	4
17	2	162	B13	B20	4
17	3	163	-	C19	4
17	4	164	-	B19	4
17	5	165	B14	C18	4
17	6	-	-	-	-
17	7	-	-	-	-
17	8	-	-	-	-
17	9	-	-	-	-
17	10	-	-	-	-
17	11	-	-	-	-
17	12	-	-	-	-
17	13	166	C13	B18	4
17	14	167	A15	A19	4
17	15	168	C12	D17	4
17	16	169	B12	A18	4
18	1	160	B15	A22	4
18	2	-	C14	B21	4
18	3	-	G11	B22	4
18	4	159	B16	C20	4
18	5	-	-	-	-
18	6	-	-	-	-
18	7	-	-	-	-
18	8	-	-	-	-
18	9	-	-	-	-
18	10	-	-	-	-
18	11	-	-	-	-
18	12	-	-	-	-
18	13	-	-	C21	4
18	14	-	D14	D19	4
18	15	158	-	D20	4
18	16	-	C15	C22	4

Pin Descriptions (Continued)

Function Block	Macro-cell	PQ208	FT256	FG324	I/O Bank
19	1	170	D13	C17	4
19	2	171	A14	B17	4
19	3	173	E13	A17	4
19	4	-	A13	D16	4
19	5	-	C11	C16	4
19	6	-	-	-	-
19	7	-	-	-	-
19	8	-	-	-	-
19	9	-	-	-	-
19	10	-	-	-	-
19	11	-	-	-	-
19	12	-	-	-	-
19	13	-	A12	B16	4
19	14	-	B11	A16	4
19	15	-	D11	D15	4
19	16	-	A11	C15	4
20	1	-	G12	D21	4
20	2	-	D15	D22	4
20	3	155	E14	E20	4
20	4	154	C16	F19	4
20	5	-	-	-	-
20	6	-	-	-	-
20	7	-	-	-	-
20	8	-	-	-	-
20	9	-	-	-	-
20	10	-	-	-	-
20	11	-	-	-	-
20	12	-	-	-	-
20	13	153	F14	E21	4
20	14	152	D16	E22	4
20	15	151	F13	F20	4
20	16	150	E15	F21	4

Pin Descriptions (Continued)

Function Block	Macro-cell	PQ208	FT256	FG324	I/O Bank
21	1	-	D10	B15	4
21	2	174	B10	A15	4
21	3	175	E12	D14	4
21	4	-	F12	B14	4
21	5	178	-	A14	4
21	6	-	-	-	-
21	7	-	-	-	-
21	8	-	-	-	-
21	9	-	-	-	-
21	10	-	-	-	-
21	11	-	-	-	-
21	12	-	-	-	-
21	13	-	-	D13	4
21	14	-	-	C13	4
21	15	-	-	B13	4
21	16	-	-	A13	4
22	1	149	G13	F22	4
22	2	148	F15	G19	4
22	3	147	G14	G20	4
22	4	146	E16	G21	4
22	5	-	-	-	-
22	6	-	-	-	-
22	7	-	-	-	-
22	8	-	-	-	-
22	9	-	-	-	-
22	10	-	-	-	-
22	11	-	-	-	-
22	12	-	-	-	-
22	13	145	H12	G22	4
22	14	144	F16	H19	4
22	15	143	H16	H20	4
22	16	142	-	H21	4

Pin Descriptions (Continued)

Function Block	Macro-cell	PQ208	FT256	FG324	I/O Bank
23	1	179	B9	A12	4
23	2	180	-	D12	4
23	3	-	C9	B12	4
23	4	182	-	C12	4
23	5	-	C10	A11	4
23	6	-	-	-	-
23	7	-	-	-	-
23	8	-	-	-	-
23	9	-	-	-	-
23	10	-	-	-	-
23	11	-	-	-	-
23	12	-	-	-	-
23	13	-	-	B11	4
23	14	-	A9	C11	4
23	15	-	-	D11	4
23	16	-	D9	A10	4
24	1	140	G15	H22	4
24	2	139	H13	J19	4
24	3	138	G16	J20	4
24	4	137	H14	J21	4
24	5	-	-	-	-
24	6	-	-	-	-
24	7	-	-	-	-
24	8	-	-	-	-
24	9	-	-	-	-
24	10	-	-	-	-
24	11	-	-	-	-
24	12	-	-	-	-
24	13	136	H15	J22	4
24	14	135	J12	K19	4
24	15	134	K12	K20	4
24	16	-	J16	K21	4

Pin Descriptions (Continued)

Function Block	Macro-cell	PQ208	FT256	FG324	I/O Bank
25	1	110	R16	W22	3
25	2	111	N15	V20	3
25	3	112	M15	V21	3
25	4	113	M13	U19	3
25	5	-	-	-	-
25	6	-	-	-	-
25	7	-	-	-	-
25	8	-	-	-	-
25	9	-	-	-	-
25	10	-	-	-	-
25	11	-	-	-	-
25	12	-	-	-	-
25	13	114	P16	V22	3
25	14	115	N16	U20	3
25	15	116	L14	U21	3
25	16	117	M14	U22	3
26	1	109	N14	Y22	3
26	2	108	T16	W21	3
26	3	107	R15	W20	3
26	4	106	P15	Y21	3
26	5	-	P14	Y20	3
26	6	-	-	-	-
26	7	-	-	-	-
26	8	-	-	-	-
26	9	-	-	-	-
26	10	-	-	-	-
26	11	-	-	-	-
26	12	-	-	-	-
26	13	103	P13	AA22	3
26	14	102	R13	AB22	3
26	15	101	N13	AA21	3
26	16	100	R14	AB21	3

Pin Descriptions (Continued)

Function Block	Macro-cell	PQ208	FT256	FG324	I/O Bank
27	1	118	L15	T19	3
27	2	-	L13	T20	3
27	3	119	M12	T21	3
27	4	120	M16	T22	3
27	5	-	-	-	-
27	6	-	-	-	-
27	7	-	-	-	-
27	8	-	-	-	-
27	9	-	-	-	-
27	10	-	-	-	-
27	11	-	-	-	-
27	12	-	-	-	-
27	13	-	K14	R19	3
27	14	-	-	R20	3
27	15	121	-	R21	3
27	16	-	-	R22	3
28	1	99	T15	W19	3
28	2	97	R12	AA20	3
28	3	95	T14	Y18	3
28	4	-	N11	AA19	3
28	5	-	P11	W17	3
28	6	-	-	-	-
28	7	-	-	-	-
28	8	-	-	-	-
28	9	-	-	-	-
28	10	-	-	-	-
28	11	-	-	-	-
28	12	-	-	-	-
28	13	-	M11	Y17	3
28	14	-	T13	AA18	3
28	15	-	N10	AB18	3
28	16	-	-	AA17	3

Pin Descriptions (Continued)

Function Block	Macro-cell	PQ208	FT256	FG324	I/O Bank
29	1	-	L16	P19	3
29	2	-	-	P20	3
29	3	122	-	P21	3
29	4	123	-	P22	3
29	5	-	-	-	-
29	6	-	-	-	-
29	7	-	-	-	-
29	8	-	-	-	-
29	9	-	-	-	-
29	10	-	-	-	-
29	11	-	-	-	-
29	12	-	-	-	-
29	13	-	-	N19	3
29	14	125	K15	N21	3
29	15	-	L12	N22	3
29	16	-	-	M22	3
30	1	-	-	AB17	3
30	2	91	T12	W16	3
30	3	90	P10	Y16	3
30	4	89	T11	AA16	3
30	5	-	R10	AB16	3
30	6	-	-	-	-
30	7	-	-	-	-
30	8	-	-	-	-
30	9	-	-	-	-
30	10	-	-	-	-
30	11	-	-	-	-
30	12	-	-	-	-
30	13	88	M10	W15	3
30	14	87	T10	Y15	3
30	15	-	M9	AA15	3
30	16	86	R9	AB15	3

Pin Descriptions (Continued)

Function Block	Macro-cell	PQ208	FT256	FG324	I/O Bank
31	1	126	K16	M19	3
31	2	-	-	M20	3
31	3	127	-	M21	3
31	4	128	J14	L22	3
31	5	-	-	-	-
31	6	-	-	-	-
31	7	-	-	-	-
31	8	-	-	-	-
31	9	-	-	-	-
31	10	-	-	-	-
31	11	-	-	-	-
31	12	-	-	-	-
31	13	-	-	L21	3
31	14	-	J15	L20	3
31	15	-	-	L19	3
31	16	131	J13	K22	3
32	1	85	P9	W14	3
32	2	84	N9	Y14	3
32	3	-	T9	AA14	3
32	4	83	M8	AB14	3
32	5	-	T8	W13	3
32	6	-	-	-	-
32	7	-	-	-	-
32	8	-	-	-	-
32	9	-	-	-	-
32	10	-	-	-	-
32	11	-	-	-	-
32	12	-	-	-	-
32	13	82	P8	Y13	3
32	14	80	R8	AA13	3
32	15	-	T7	AB13	3
32	16	-	N8	W12	3

Notes:

1. GTS = global output enable, GSR = global reset/set, GCK = global clock, CDRST = clock divide reset, DGE = DataGATE enable.
2. GCK, GSR, and GTS pins can also be used for general purpose I/O.

XC2C512 JTAG, Power/Ground, No Connect Pins and Total User I/O

Pin Type	PQ208	FT256	FG324
TCK	98	P12	Y19
TDI	94	R11	AB19
TDO	176	A10	C14
TMS	96	N12	AB20
V _{CCAUX} (JTAG supply voltage)	11	F4	F1
Power internal (V _{CC})	1, 53, 124	P3, K13, D12, D5	E3, AA3, N20, A20, D4
Power Bank 1 I/O (V _{CCIO1})	33,59,79	J6, K6, L7, L8	M9, N9, P10, P11
Power Bank 2 I/O (V _{CCIO2})	26, 204	F7, F8, G6, H6	J10,J11, K9, L9
Power Bank 3 I/O (V _{CCIO3})	92, 105, 132	J11, K11, L9, L10	M14, N14, P12, P13
Power Bank 4 I/O (V _{CCIO4})	133, 157, 172, 181	F9, F10, H11	J12, J13, K14, L14
Ground	13, 24, 42, 52, 68, 81, 93, 104, 129, 130, 141, 156, 177, 190, 207	F6, F11, G7, G8, G9, G10, H7, H8, H9, H10, J7, J8, J9, J10, K7, K8, K9, K10, L6, L11	D5, D18, E4, E19, J9, J14, K10, K11, K12, K13, L10, L11, L12, L13, M10, M11, M12, M13, N10, N11, N12, N13, P9, P14, V4, V19, W5, W18
No connects	-	-	-
Total user I/O (includes dual function pins)	173	212	270

Device Part Marking

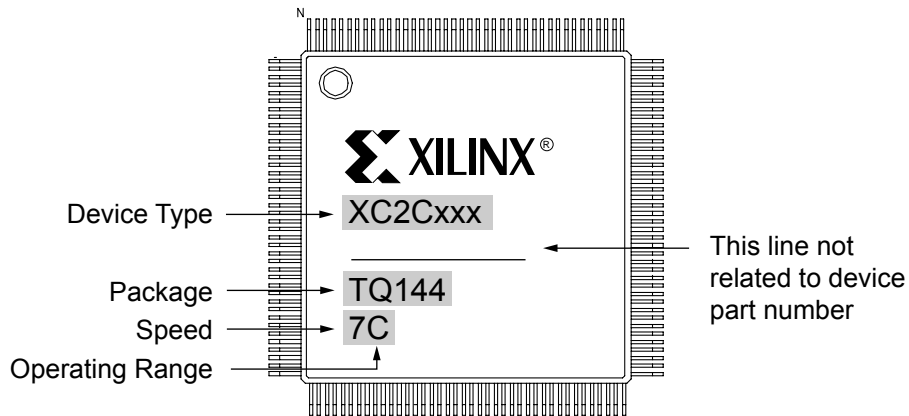


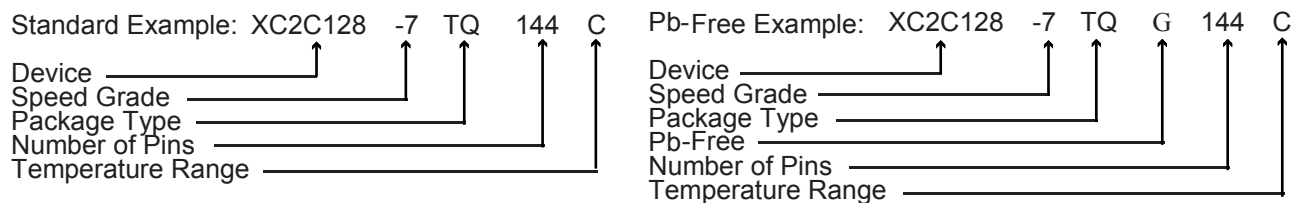
Figure 5: Sample Package with Part Marking

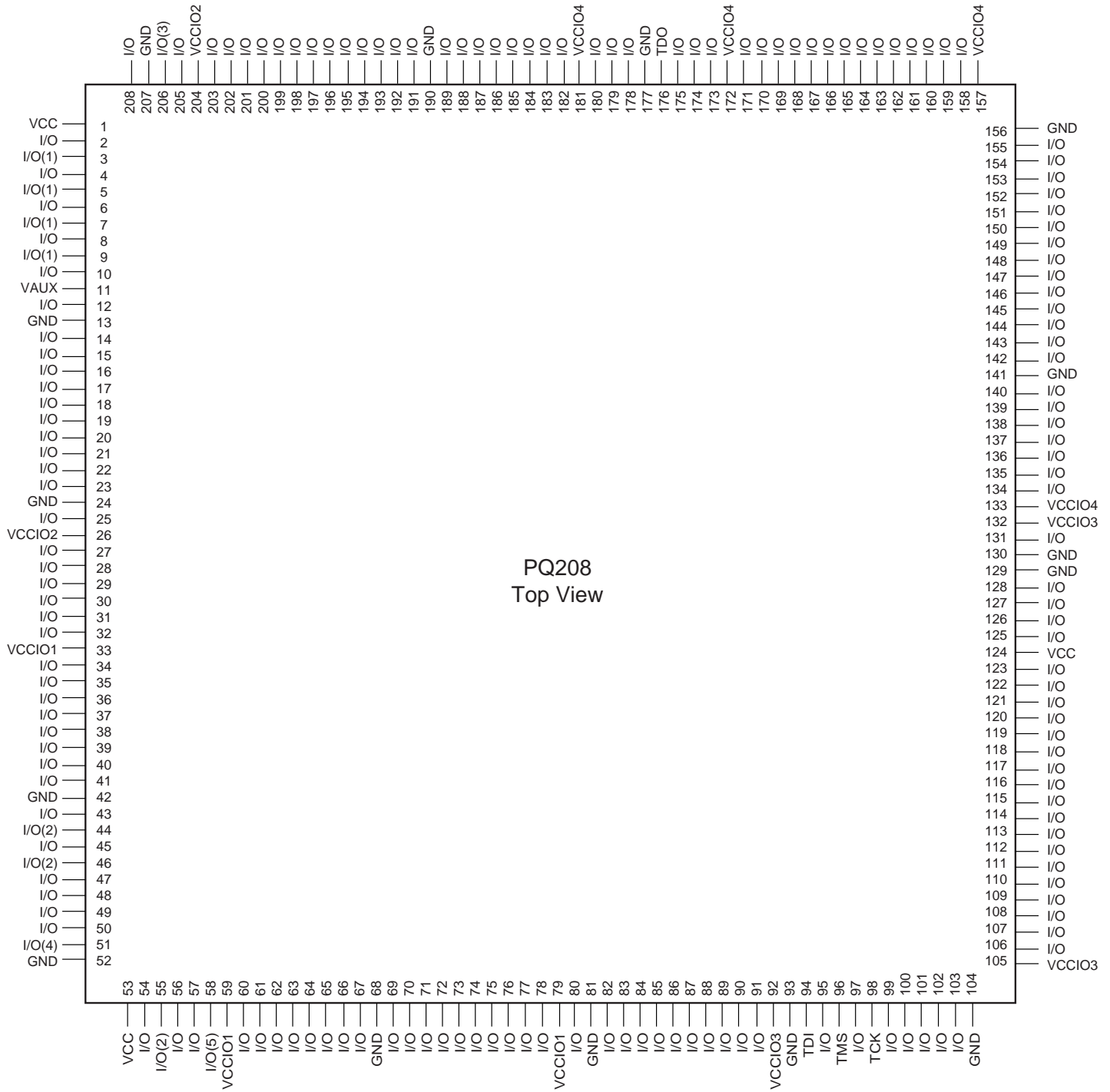
Ordering Information

Part Number	Pin/Ball Spacing	θ_{JA} (C/Watt)	θ_{JC} (C/Watt)	Package Type	Package Body Dimensions	I/O	Commercial (C) Industrial (I) ⁽¹⁾
XC2C512-7PQ208C	0.5mm	35.1	7.2	Plastic Quad Flat Pack	28mm x 28mm	173	C
XC2C512-10PQ208C	0.5mm	35.1	7.2	Plastic Quad Flat Pack	28mm x 28mm	173	C
XC2C512-7FT256C	1.0mm	32.2	4.9	Fine Pitch Thin BGA	17mm x 17mm	212	C
XC2C512-7FT256I	1.0mm	32.2	4.9	Fine Pitch Thin BGA	17mm x 17mm	212	I
XC2C512-10FT256C	1.0mm	32.2	4.9	Fine Pitch Thin BGA	17mm x 17mm	212	C
XC2C512-7FG324C	1.0mm	39.1	5.0	Fine Pitch BGA	23mm x 23mm	270	C
XC2C512-10FG324C	1.0mm	39.1	5.0	Fine Pitch BGA	23mm x 23mm	270	C
XC2C512-7PQG208C	0.5mm	35.1	7.2	Plastic Quad Flat Pack; Pb-free	28mm x 28mm	173	C
XC2C512-10PQG208C	0.5mm	35.1	7.2	Plastic Quad Flat Pack; Pb-free	28mm x 28mm	173	C
XC2C512-7FTG256C	1.0mm	32.2	4.9	Fine Pitch Thin BGA; Pb-free	17mm x 17mm	212	C
XC2C512-7FTG256I	1.0mm	32.2	4.9	Fine Pitch Thin BGA; Pb-free	17mm x 17mm	212	I
XC2C512-10FTG256C	1.0mm	32.2	4.9	Fine Pitch Thin BGA; Pb-free	17mm x 17mm	212	C
XC2C512-7FGG324C	1.0mm	39.1	5.0	Fine Pitch BGA; Pb-free	23mm x 23mm	270	C
XC2C512-10FGG324C	1.0mm	39.1	5.0	Fine Pitch BGA; Pb-free	23mm x 23mm	270	C
XC2C512-10PQ208I	0.5mm	35.1	7.2	Plastic Quad Flat Pack	28mm x 28mm	173	I
XC2C512-10FT256I	1.0mm	32.2	4.9	Fine Pitch Thin BGA	17mm x 17mm	212	I
XC2C512-10FG324I	1.0mm	39.1	5.0	Fine Pitch BGA	23mm x 23mm	270	I
XC2C512-10PQG208I	0.5mm	35.1	7.2	Plastic Quad Flat Pack; Pb-free	28mm x 28mm	173	I
XC2C512-10FTG256I	1.0mm	32.2	4.9	Fine Pitch Thin BGA; Pb-free	17mm x 17mm	212	I
XC2C512-10FGG324I	1.0mm	39.1	5.0	Fine Pitch BGA; Pb-free	23mm x 23mm	270	I

Notes:

1. C = Commercial ($T_A = 0^\circ\text{C}$ to $+70^\circ\text{C}$); I = Industrial ($T_A = -40^\circ\text{C}$ to $+85^\circ\text{C}$).





- (1) - Global Output Enable
- (2) - Global Clock
- (3) - Global Set/Reset
- (4) - Clock Divide Reset
- (5) - DataGATE Enable

Figure 6: PQ208 Plastic Quad Flat Pack

16	15	14	13	12	11	10	9	8	7	6	5	4	3	2	1	
I/O	I/O	I/O	I/O	I/O	I/O	TDO	I/O	I/O	I/O	I/O	I/O	I/O	I/O	I/O	I/O	A
I/O	I/O	I/O	I/O	I/O	I/O	I/O	I/O	I/O	I/O	I/O	I/O	I/O	I/O	I/O	I/O	B
I/O	I/O	I/O	I/O	I/O	I/O	I/O	I/O	I/O	I/O	I/O	I/O	I/O(3)	I/O	I/O	I/O	C
I/O	I/O	I/O	I/O	VCC	I/O	I/O	I/O	I/O	I/O	I/O	VCC	I/O(1)	I/O(1)	I/O	I/O	D
I/O	I/O	I/O	I/O	I/O	I/O	I/O	I/O	I/O	I/O	I/O	I/O(1)	I/O	I/O(1)	I/O	I/O	E
I/O	I/O	I/O	I/O	I/O	GND	VCCIO4	VCCIO4	VCCIO2	VCCIO2	GND	I/O	VAUX	I/O	I/O	I/O	F
I/O	I/O	I/O	I/O	I/O	I/O	GND	GND	GND	GND	VCCIO2	I/O	I/O	I/O	I/O	I/O	G
I/O	I/O	I/O	I/O	I/O	VCCIO4	GND	GND	GND	GND	VCCIO2	I/O	I/O	I/O	I/O	I/O	H
I/O	I/O	I/O	I/O	I/O	VCCIO3	GND	GND	GND	GND	VCCIO1	I/O	I/O	I/O	I/O	I/O	J
I/O	I/O	I/O	VCC	I/O	VCCIO3	GND	GND	GND	GND	VCCIO1	I/O	I/O	I/O	I/O	I/O	K
I/O	I/O	I/O	I/O	I/O	GND	VCCIO3	VCCIO3	VCCIO1	VCCIO1	GND	I/O	I/O	I/O	I/O	I/O	L
I/O	I/O	I/O	I/O	I/O	I/O	I/O	I/O	I/O	I/O	I/O	I/O	I/O	I/O(2)	I/O(2)	I/O	M
I/O	I/O	I/O	I/O	TMS	I/O	I/O	I/O	I/O	I/O	I/O	I/O	I/O	I/O	I/O	I/O	N
I/O	I/O	I/O	I/O	TCK	I/O	I/O	I/O	I/O	I/O	I/O	I/O(2)	I/O	VCC	I/O(4)	I/O	P
I/O	I/O	I/O	I/O	I/O	TDI	I/O	I/O	I/O	I/O	I/O	I/O	I/O	I/O	I/O	I/O	R
I/O	I/O	I/O	I/O	I/O	I/O	I/O	I/O	I/O	I/O	I/O	I/O	I/O	I/O	I/O(5)	I/O	T

FT256 Bottom View

- (1) - Global Output Enable
- (2) - Global Clock
- (3) - Global Set/Reset
- (4) - Clock Divide Reset
- (5) - DataGATE Enable

Figure 7: FT256 Fine Pitch Thin BGA

	22	21	20	19	18	17	16	15	14	13	12	11	10	9	8	7	6	5	4	3	2	1	
A	I/O	I/O	VCC	I/O	I/O	I/O	I/O	I/O	I/O	I/O	I/O	I/O	I/O	I/O	I/O	I/O	I/O	I/O	I/O	I/O	I/O(3)	I/O	
B	I/O	I/O	I/O	I/O	I/O	I/O	I/O	I/O	I/O	I/O	I/O	I/O	I/O	I/O	I/O	I/O	I/O	I/O	I/O	I/O	I/O	I/O(1)	
C	I/O	I/O	I/O	I/O	I/O	I/O	I/O	I/O	TDO	I/O	I/O	I/O	I/O	I/O	I/O	I/O	I/O	I/O	I/O	I/O	I/O	I/O(1)	
D	I/O	I/O	I/O	I/O	GND	I/O	I/O	I/O	I/O	I/O	I/O	I/O	I/O	I/O	I/O	I/O	I/O	GND	VCC	I/O(1)	I/O	I/O	
E	I/O	I/O	I/O	GND															GND	VCC	I/O	I/O(1)	
F	I/O	I/O	I/O	I/O															I/O	I/O	I/O	VAUX	
G	I/O	I/O	I/O	I/O															I/O	I/O	I/O	I/O	
H	I/O	I/O	I/O	I/O															I/O	I/O	I/O	I/O	
J	I/O	I/O	I/O	I/O					GND	VCCIO4	VCCIO4	VCCIO2	VCCIO2	GND					I/O	I/O	I/O	I/O	
K	I/O	I/O	I/O	I/O					VCCIO4	GND	GND	GND	GND	VCCIO2					I/O	I/O	I/O	I/O	
L	I/O	I/O	I/O	I/O					VCCIO4	GND	GND	GND	GND	VCCIO2					I/O	I/O	I/O	I/O	
M	I/O	I/O	I/O	I/O					VCCIO3	GND	GND	GND	GND	VCCIO1					I/O	I/O	I/O	I/O	
N	I/O	I/O	VCC	I/O					VCCIO3	GND	GND	GND	GND	VCCIO1					I/O	I/O	I/O	I/O	
P	I/O	I/O	I/O	I/O					GND	VCCIO3	VCCIO3	VCCIO1	VCCIO1	GND					I/O	I/O	I/O	I/O	
R	I/O	I/O	I/O	I/O															I/O	I/O	I/O	I/O	
T	I/O	I/O	I/O	I/O															I/O	I/O	I/O	I/O	
U	I/O	I/O	I/O	I/O															I/O	I/O	I/O	I/O	
V	I/O	I/O	I/O	GND															GND	I/O(2)	I/O	I/O	
W	I/O	I/O	I/O	I/O	GND	I/O	I/O	I/O	I/O	I/O	I/O	I/O	I/O	I/O	I/O	I/O	I/O	GND	I/O	I/O	I/O	I/O	
Y	I/O	I/O	I/O	TCK	I/O	I/O	I/O	I/O	I/O	I/O	I/O	I/O	I/O	I/O	I/O	I/O	I/O	I/O	I/O	I/O	I/O	I/O(2)	
AA	I/O	I/O	I/O	I/O	I/O	I/O	I/O	I/O	I/O	I/O	I/O	I/O	I/O	I/O	I/O	I/O	I/O	I/O(5)	I/O	VCC	I/O	I/O	
AB	I/O	I/O	TMS	TDI	I/O	I/O	I/O	I/O	I/O	I/O	I/O	I/O	I/O	I/O	I/O	I/O	I/O	I/O	I/O	I/O(2)	I/O(4)	I/O	

FG324 Bottom View

- (1) - Global Output Enable
- (2) - Global Clock
- (3) - Global Set/Reset
- (4) - Clock Divide Reset
- (5) - DataGATE Enable

Figure 8: FG324 Fine Pitch BGA

Warranty Disclaimer

THESE PRODUCTS ARE SUBJECT TO THE TERMS OF THE XILINX LIMITED WARRANTY WHICH CAN BE VIEWED AT <http://www.xilinx.com/warranty.htm>. THIS LIMITED WARRANTY DOES NOT EXTEND TO ANY USE OF THE PRODUCTS IN AN APPLICATION OR ENVIRONMENT THAT IS NOT WITHIN THE SPECIFICATIONS STATED ON THE THEN-CURRENT XILINX DATA SHEET FOR THE PRODUCTS. PRODUCTS ARE NOT DESIGNED TO BE FAIL-SAFE AND ARE NOT WARRANTED FOR USE IN APPLICATIONS THAT POSE A RISK OF PHYSICAL HARM OR LOSS OF LIFE. USE OF PRODUCTS IN SUCH APPLICATIONS IS FULLY AT THE RISK OF CUSTOMER SUBJECT TO APPLICABLE LAWS AND REGULATIONS.

Additional Information

Additional information is available for the following CoolRunner-II topics:

- XAPP784: Bulletproof CPLD Design Practices
- XAPP375: Timing Model
- XAPP376: Logic Engine
- XAPP378: Advanced Features
- XAPP382: I/O Characteristics
- XAPP389: Powering CoolRunner-II
- XAPP399: Assigning VREF Pins

To access these and all application notes with their associated reference designs, click the following link and scroll down the page until you find the document you want:

[CoolRunner-II Data Sheets and Application Notes Device Packages](#)

Revision History

The following table shows the revision history for this document.

Date	Version	Revision
7/19/02	1.0	Initial Xilinx release.
3/15/03	2.0	Added characterization data.
11/25/03	2.1	Fixed two typos.
1/26/04	2.2	Updated T _{sol} ; added links to Data Sheets and Application Notes.
8/03/04	2.3	Pb-free documentation
10/01/04	2.4	Add Asynchronous Preset/Reset Pulse Width specification to AC Electrical Characteristics.
01/30/05	2.5	Change to I _{CCSB} MAX for Commercial and Industrial.
03/07/05	2.6	Removed -6 speed grade. Modified Table 1, IOSTANDARDS.
03/20/06	3.0	Change to Product Specification. Add warranty Disclaimer. Add note to Pin Descriptions that GCK, GSR, and GTS pins can also be used for general purpose I/O.
02/15/07	3.1	Corrections to timing parameters t _{DIN} , t _{SUD} , t _{PSUD} , t _{PHD} , t _{PH} , t _{SLEW18} , t _{IN} (HSTL), t _{OUT} (SSTL3), and t _{Tin} (SSTL3) for -6 speed grade. Corrections to t _{DIN} , t _{SUD} , t _{CO} , t _{PSUD} , t _{PHD} , and t _{PH} for the -7 speed grade. Values now match the software. There were no changes to silicon or characterization. Added XC2C512-7FT256I and XC2C512-7FTG236I packages. Change to V _{IH} specification for 2.5V and 1.8V LVCMOS.
03/08/07	3.2	Fixed typo in note for V _{IL} for LVCMOS18; removed note for V _{IL} for LVCMOS33.